

THE PERFECT
PUBLICATION
TO KEEP YOU
UPDATED
SINCE 2007

Like and
follow us on



ISSUE 900 // 28 May 2026

timber & FORESTRY *e*news



Happy 900th
issue *E*news!

Building the next generation of sales professionals!



Start your 12-month program today.
SCAN THE CODE TO LEARN MORE



LATEST JOBS:

- Strategic Forest and Renewable Materials Partnership – Expressions of Interest
- Forester
- Senior Forester - QLD
- Woodworking Machinery Sales Representative - QLD / NSW / VIC

[Click to apply](#)

Enabling sustainability

Explore how forest certification supports UN SDG and ESG goals.

[Learn more.](#)



Your Association
Owned by You
Here for You

- Legal & HR - sorted
- Recruit the right people - fast
- Safer sites, smarter teams
- Industry updates



You can't build Tasmania without Tasmanian timber

TASMANIA'S forest and timber industry is calling for a stronger commitment to locally sourced timber and downstream manufacturing as the State prepares to deliver a major pipeline of housing and infrastructure projects.

The Tasmanian Forest Products Association (TFPA) said Tasmania had a major opportunity to build in a way that balances environmental responsibility with economic growth, regional jobs and long-term community benefit.

TFPA Chief Executive Officer Nick Steel said Tasmania's future should be built on balance, using renewable local materials, supporting sustainable industries and ensuring more value stays within Tasmania.

"If Tasmania is serious about building more homes and major projects, we should be using more Tasmanian timber," Mr Steel said.

"It's renewable, it stores carbon, it supports regional jobs and manufacturing, and it keeps more economic value here in our State rather than importing materials."

Mr Steel said local timber and downstream processing would play a critical role in helping Tasmania deliver future housing and major projects while reducing transport emissions and supporting sovereign manufacturing capability.

"Every extra step of processing undertaken in Tasmania means more jobs,

more investment and more opportunity staying here," he said.

"The story of forestry is not just what happens in the forest, it's what happens afterwards in manufacturing plants, workshops, transport businesses and construction sites across Tasmania."

Mr Steel said the industry wanted to work collaboratively with Government on what it is calling a Tasmanian Timber Guarantee, a long-term commitment to greater certainty around project pipelines, procurement pathways and the role local timber can play in public construction and housing delivery.

"Tasmania is talking about major housing programs, urban renewal and significant infrastructure investment, including projects like the Macquarie Point Stadium," he said.

"But right now there is not enough certainty around how local timber and local manufacturing capability fit within that pipeline."

"That certainty matters because businesses make investment decisions years ahead. Industry needs confidence to invest in advanced manufacturing capability, workforce growth and apprenticeships."



Nick Steel,
CEO of
**Tasmanian
Forest
Products
Association.**
Image: supplied

Neville Smith Forest Products (NSFP) CEO Andrew Walker said businesses like Neville Smith demonstrated the broader social and economic contribution of Tasmania's timber industry.

"When people walk through operations like this, they see advanced manufacturing, skilled jobs and Tasmanian products helping build homes and infrastructure," Mr Walker said.

"But they also see businesses investing in people and communities."

Mr Walker said NSFP worked closely with parts of the disability sector and vulnerable members of the community to help create meaningful employment pathways.



"That's something we're incredibly proud of," he said.

"These industries are deeply connected to regional Tasmania and provide real opportunities for people who can sometimes struggle to access secure and meaningful work."

Mr Walker said rising fuel, freight and operating costs continued to place pressure on regional manufacturing businesses and reinforced the importance of strengthening local supply chains.

"The opportunity is here for Tasmania to lead with renewable materials, lower-carbon construction and a stronger local manufacturing base," he said.

Preserve your Project, Preserve Timber

Choose a timber preservative with colour to set your project application apart.

- Micronised pigment technology
- Enhances timber grain
- A combination of Micropro's attributes with the added benefit of long lasting colour

www.kopperspc.com.au
1800 088 809

FWCA calls out the growing irony

Macintosh continues to attack other ACCU Schemes while INFM faces its own integrity crisis.

FOLLOWING on from last week, Forest & Wood Communities Australia Chair Steve Dobbys has expressed how deeply ironic it is that Professor Andrew Macintosh continues to publicly criticise the integrity of other Australian Carbon Credit Unit (ACCU) schemes while the proposed Improved Native Forest Management (INFM) methodology linked to the Great Koala National Park is itself facing serious questions over additionality and carbon leakage.

Mr Dobbys said recent scrutiny surrounding the INFM proposal highlighted growing concern that the methodology may fail some of the most fundamental integrity tests required under Australia's carbon framework.

"It is extraordinary to see ongoing criticism of other ACCU methodologies from Professor Macintosh when the INFM proposal associated with the Great Koala National Park appears to suffer from the very integrity problems he has accused others of creating," Mr Dobbys said.

"The two biggest concerns are additionality and leakage – and both go

“IF INTEGRITY MATTERS, THEN IT MUST APPLY CONSISTENTLY



Steve Dobbys, Chair of Forest & Wood Communities Australia. Image: FWCA

to the core credibility of the scheme."

Previous reporting by *Timber and Forestry Enews* highlighted concerns raised within industry, the Senate and the broader scientific community regarding the INFM methodology and its role in underpinning the proposed Great Koala National Park.

Mr Dobbys said the additionality problem was particularly acute because the NSW Government has already made a political decision to establish the Great Koala National Park.

"The whole premise of additionality is that carbon credits should only be issued for activities that would not otherwise occur," he said.

"But if the Government has already committed to locking up these forests for political or conservation reasons, then the question becomes obvious – what exactly is the ACCU scheme paying for?"

"If the outcome was going to happen anyway, then issuing carbon credits risks rewarding a pre-existing policy decision rather than generating genuine additional abatement."

Mr Dobbys said even the Chair of the Emissions Reduction Assurance Committee, Professor Karen Hussey, had acknowledged during Senate Estimates that additionality and leakage were key integrity risks requiring careful scrutiny.

"The leakage problem is even more glaring," he said.

"Stopping native forestry in NSW does not stop Australians needing timber."

"We will still need hardwood for construction, pallets, flooring, poles, fencing and packaging. That demand does not magically disappear because a forest changes tenure."

Mr Dobbys said the likely consequence was that timber production would simply shift elsewhere:

- onto neighbouring private forests,
- into other Australian states, or

Cont P 4

Trees grow back.

My timber town won't

Save our sustainable timber industry

Forest & Wood Communities Australia | www.fwca.org.au

"Stopping native forestry in NSW does not stop Australians needing timber" but it does destroy the communities that are built on the industry. Image: FWCA

From P 3

- increasingly into imported timber from countries with lower environmental standards.

“That is the definition of carbon leakage,” he said.

“If harvesting is displaced rather than avoided, then emissions and environmental impacts are displaced as well.”

“The atmosphere does not care whether emissions occur in NSW, Queensland, Papua New Guinea, South America or Southeast Asia.”

“A carbon project that exports timber production and associated emissions elsewhere is not delivering genuine global abatement.”

Mr Dobbys said the irony was impossible to ignore.

“For years Professor Macintosh has been one of the loudest critics of ACCU integrity, arguing other schemes lacked environmental credibility,” he said.

“Yet the INFM proposal now appears vulnerable to exactly the same criticisms, questionable additionality,

highly uncertain leakage assumptions and disputed claims about net carbon outcomes.”

Mr Dobbys said the Government’s own science also undermined claims the Great Koala National Park was necessary to save koalas.

“Research undertaken by NSW DPI Forest Science, reviewed through the NSW Natural Resources Commission, found no statistically significant decline in koala density following regulated selective harvesting in north-east NSW state forests,” he said.

“The NSW Baseline Koala Survey further confirmed koalas remain widespread throughout production forests on the Mid North Coast.”

“The evidence shows koalas and sustainable forestry are already coexisting.”

Mr Dobbys also noted that more than half of the 176,000 hectares of state forest proposed for inclusion in the Great Koala National Park is already managed primarily for conservation through existing reserve systems and environmental protections.

“This proposal is increasingly looking less like evidence-based conservation and more like a publicly funded carbon-credit land transfer,” he said.

“And regional communities are being asked to sacrifice jobs, timber supply and manufacturing capacity for carbon claims that may not stand up to scrutiny.”

Mr Dobbys said any ACCU methodology must meet the highest integrity standards regardless of who developed it.

“The same level of scrutiny Professor Macintosh has demanded of other ACCU projects should now be applied to the INFM proposal,” he said.

“If integrity matters, then it must apply consistently, including to schemes designed to shut down native forestry.”

“ THIS PROPOSAL IS INCREASINGLY LOOKING LESS LIKE EVIDENCE-BASED CONSERVATION

**Renewable.
Sustainable.
Reliable.
Secure.**

VIDA
CANFOR

P: 07 3147 8790
E. sales@vidawood.com

Australian Forest Products Association

AFPA THE LEADING VOICE FOR AUSTRALIA’S FOREST PRODUCTS SECTOR

New fuel cost recovery rules for road transport

MANY members use transport companies, and almost all members deal with freight in one way or another.

The Fair Work Ombudsman has released new information about the fuel cost recovery road transport contractual chain order. The order was made by the Fair Work Commission and started applying from 21 April 2026. Read the Fair Work Ombudsman update here.

The order sets rules for how increased fuel costs are recovered through the road transport industry. In simple terms, it is designed to make sure fuel cost increases are properly passed through the transport chain, rather than being unfairly absorbed by transport operators, subcontractors or owner-drivers.

Why this matters

This may affect members who:

- Use transport companies to deliver goods
- Receive goods where freight is charged separately
- Contract couriers, delivery businesses or freight operators
- Use subcontractors or owner-drivers
- Operate their own trucks but also use outside transport providers

For most members, this does not mean a major new compliance burden. But it does mean you should understand what your transport providers are charging and how any fuel levy or surcharge is being calculated.

What the Fair Work Ombudsman has updated

The Fair Work Ombudsman has now



New rules around fuel cost recovery means affected businesses (most businesses) need to take reasonable steps to be compliant like asking questions and keeping records. Image: shutterstock

provided expanded information, including:

- more detail on the “reasonable steps” requirement for primary parties and practical examples showing how affected businesses might respond to the order
- advice on how to lodge a dispute with the Fair Work Commission.

The “reasonable steps” requirement is important. In practical terms, members who contract with transport providers should ask how those providers are dealing with fuel cost recovery, particularly where subcontractors or owner-drivers are involved.

That does not mean every member needs to become a transport compliance expert. But it does mean businesses should ask sensible questions and keep records.

What members should do now

- Review your freight and delivery arrangements.
- Check whether your invoices include a fuel levy or fuel surcharge.

- Ask your transport provider how they are complying with the order.
- If they use subcontractors or owner-drivers, ask whether fuel cost recovery is being passed through.
- Keep records of emails, invoices, contract terms and any explanations you receive.
- Do not simply reject a fuel surcharge without first understanding whether it relates to the new order.

If there is a dispute

If you disagree with a fuel levy or adjustment, first ask the transport provider to explain it. If the issue cannot be resolved, disputes can be lodged with the Fair Work Commission.

Commission review

The Fair Work Commission is also reviewing the operation of the order on 25 May 2026. Interested parties can provide feedback on how the order is operating in practice.

NTHA will monitor the review and update members if there are any significant changes.

Bottom line

This is a transport order, but it matters to our industry because freight is part of almost every timber, hardware and building supply business.

Members should not overreact but should not ignore it either. Check your arrangements, ask your transport providers how fuel cost recovery is being handled, keep records, and make sure any new fuel charge is properly explained.

Source: NTHA

Enabling sustainability

for the next generation...

Click to learn more.

responsiblewood.org.au

Every certified timber product carries the story of a healthy forest. Look for the PEFC and Responsible Wood labels.

Responsible Wood
RW/1-10-1



Celebrating 900 issues of *Enews*

Serving the timber and forestry industry since 2007.

This week, we proudly celebrate a remarkable milestone, 900 issues of *Timber and Forestry Enews* (*Enews*), Australia's most respected timber industry-focused digital publication. Since launching in 2007, *Enews* has grown alongside the timber and forestry sector, and we are incredibly grateful to have shared this journey with our loyal readers, advertisers, partners and contributors.

Timber Media Australasia proudly owns both *Enews* and our sister publication, *Timber Trader News*, our printed bimonthly magazine,

which celebrated its 40th anniversary at the end of 2025. Australian made and owned, we proudly display the Australian Made logo across both publications as a reflection of our commitment to supporting local industry.



Behind every edition is a dedicated and passionate team consisting of two directors, three editors, two graphic designers, a webmaster and several professional writers, including Michael Smith based in New Zealand. Together, our team works hard to research, fact-check, conduct interviews and provide meaningful background information to deliver accurate, timely and relevant reporting. We pride ourselves on producing thoughtful journalism that goes beyond simply republishing media releases or syndicated content.

Over the years, *Enews* has evolved into far more than just a digital publication. We exist because of the continued support of our readers, advertisers, partners and the wider timber and forestry community, and we sincerely appreciate every one of you. Our network extends across forestry, industry associations, media organisations, exporters, suppliers, manufacturers and supply chain providers both in Australia and internationally.

Most importantly, *Enews* is read by industry professionals seeking trusted, up-to-date information from the frontline of the timber and forestry sector. That



Campbell McInnes (left) and Chris Parker (right) are very proud to be reaching 900 issues of *Enews* this week! Image: Timber and Forestry Enews

responsibility is something we take very seriously.

We know our audience is engaged. Google Analytics continues to show strong growth in readership and website traffic, which recently led us to upgrade to a superior cloud-based platform with greater capacity and processing power. As our readership continues to expand, we are also reviewing additional service offerings and planning further upgrades later this year to better support our growing audience.

One area that continues to gain momentum is our Jobs Board. Businesses can advertise industry and related vacancies for just \$40 plus GST for three weeks, helping us move closer to becoming the go-to destination for timber and forestry employment opportunities.

We are also making significant improvements to our Buy/Sell section and look forward to announcing these exciting developments in the near future.

“ONE THING HAS REMAINED CONSTANT: OUR COMMITMENT TO REPORTING ON THE ISSUES THAT MATTER MOST TO OUR READERS”

Back in 2024, we appointed a dedicated social media officer to strengthen our online presence and industry engagement. The results have been extremely encouraging, with steady growth across our social media platforms; particularly LinkedIn. It has been exciting to watch our *Enews* LinkedIn page grow from zero to reaching 2,000 genuine industry-related followers earlier this week. We are confident that continuing to invest in digital engagement will not only strengthen our readership but also deliver greater exposure and value for our advertising partners.

The *Enews* team greatly values the industry news, feedback and contributions we receive from our readers. If you are interested in exploring partnership opportunities, we would be delighted to hear from you. Please contact Campbell McInnes on email: campbellm@timberandforestry.eneews.com to discuss how we can work together to support mutual growth and collaboration across the sector.

As we celebrate this milestone, we would also like to acknowledge our founding publisher and editor, Dennis Macready, and later the late John Halkett, whose leadership helped take the publication to the next level. Looking back over the years since 2007, it is remarkable to see the evolution of the industry, technology, communication and storytelling. Through all the changes, one thing has remained constant; our commitment to reporting on the issues that matter most to our readers.

We are especially proud of the many loyal customers and supporters who have been with us for years. Watching their businesses grow and evolve alongside our own is a true reflection of the strong partnerships we have built together over time.

Thank you for being part of our journey to 900 issues. We look forward to continuing to inform, connect and support the timber and forestry community for many years to come.

The *Enews* Team

JUNE**9-11: SAVE THE DATE: Woodex Trade Exhibition – Gallagher Convention Centre, Johannesburg, South Africa.**

Africa's premier trade exhibition for timber, woodworking machinery, tools, and forestry. WoodEX for Africa has evolved into a true international event, consistently attracting visitors and exhibitors from more than 20 countries. Visit www.woodexforafrica.com for more information.

23: SAVE THE DATE: AFPA members dinner – QT Hotel, Canberra, 6.30pm - 9.30pm. Further information, including speakers and registration details coming soon.**JULY****18: Queensland Timber & Hardware Industry Awards – Rydges South Bank, Brisbane 6.30pm - 11.30pm.**

Join us in celebrating the Queensland Timber and Hardware Industry. For more information, visit <https://www.ntha.com.au/eventdetails/37606/2026-queensland-timber-hardware-industry-awards> or contact tahlia@ntha.com.au

SEPTEMBER**4: New South Wales & ACT Timber & Hardware Industry Awards – Doltone House, Sydney 6.30pm - 11.30pm.**

Join us in celebrating the NSW Timber and Hardware Industry. For more information, visit <https://www.ntha.com.au/eventdetails/38006/2026-new-south-wales-act-timber-hardware-industry-awards> or contact tahlia@ntha.com.au

12: SAVE THE DATE: 2026 WFTN Cocktails for Charity – Cloudland, Brisbane, 1.30pm - 6.00pm. In support of Zephyr Education Limited. Further information, and ticket sale details coming soon.**OCTOBER****7-9: Forestry Australia 2026 Symposium – Rex Hotel, Canberra.** This Symposium will explore how the forestry sector can articulate and share its values and engage constructively with diverse audiences and stakeholders – from local communities and Traditional Owners, to politicians and policymakers, the media, and the wider public. For more information visit <https://www.forestry.org.au/2026-symposium/>**19-20: International Woodchip and Biomass Trade Conference – Singapore.**

The conference will serve as a key meeting point for the global biomass community. For more information and to register, visit: <https://web.cvent.com/event/7fd17c6e-d403-4eb4-a6cd-ab69df757864/summary>

30: SA, NT & WA Timber & Hardware Industry Awards – National Wine Centre, Adelaide, 6.30pm - 11.30pm.

Join us in celebrating the SA, NT & WA Timber and Hardware Industry. For more information, visit <https://www.ntha.com.au/eventdetails/38006/2026-new-south-wales-act-timber-hardware-industry-awards> or contact tahlia@ntha.com.au

NOVEMBER**18: SAVE THE DATE: 2026 SIM-PAC Sustainability Awards – Castlereagh Boutique Hotel, Sydney.**

The Awards recognise practical leadership in decarbonisation, circular economy, and sustainable industrial practice across the Asia-Pacific region. Further information will be available soon on the Awards website <https://www.sim-pac.live/2026-awards>

A CUT ABOVE...

Do you crosscut timber packs at ± 1 mm accuracy?
Or cut structural timber, panel products (MDF & LVL), paper rolls?
Or produce pallet dimensions or studs on fixed lengths?
HOLTEC has a solution for you!



Our scope of supply:

- Mobile and stationary chainsaws
- Timber crosscut stations
- Log cutting stations
- Circular saws
- Mechanisation
- Sorting lines
- Scanning and optimising systems
- Special systems

For more information contact:



Ph: +64 9 416 8294 // Fax: +64 9 416 8296
Email: sales@holtec.org // Web: www.holtec.org

Biochar processing and timber treatment made easy with Crusader Engineering

AUCKLAND-BASED Crusader Engineering commenced operations back in 1984 and since then has evolved into a modern innovative mechanical, design, build and process engineering company exporting a range of excellent products worldwide. *Timber & Forestry Enews* spoke with Howard Snoad, Company Director, to discuss its biochar and timber treatment capabilities and how these can directly benefit the Australian and New Zealand markets.

BIOCHAR PROCESS KILNS

Enews was keen to understand more about the range of timber which can be used to make biochar.

Mr Snoad says Crusader Engineering “offers a proven, highly effective and simple way to help with the very complex issue of climate change within our chosen field of timber processing”.

“Our systems produce the incredible biochar, a charcoal-like substance created by the pyrolysis of biomass, which includes wood, bark, sawdust, and even small offcuts.

Biochar effectively locks in solid carbon and can help to rejuvenate precious agricultural land. This reduces landfill volumes and disposal costs at the same time.”

“We also have a dedicated solution to process CCA-treated timbers, a



1



3



2

- 1/ **Biochar is created from forestry and timber by-products.**
- 2/ **Timber offcuts can not only be used in the kiln to produce biochar but also to power the kiln itself.**
- 3/ **Crusader Engineering creates both bespoke solutions and modular kilns.** All images: Crusader Engineering

real industry first!” Crusader Engineering designs bespoke solutions to suit the customer and their operations. We also offer modular kiln packages, which can be added to as volumes grow.”

“In combination with our expert technical Māori partners, we are highly experienced pyrolysis engineers at the forefront of research and development for an environmentally sustainable biochar future. We will continue to develop and bring solutions to market.”

SELF-POWERED BIOCHAR AND RANGE

“We have successfully designed and built multiple robust, reliable and practical pyrolysis biochar kilns of all sizes for New Zealand industry, some powered by waste wood instead of fossil fuels. They include large industrial pyrolysis systems for urban wastes approved by local authorities; viable, large-scale modularised and transportable systems;

or small hobbyist kilns.”

“Our kilns are especially effective in areas dealing with a significant excess of biomass, such as forestry slash, timber processing sites and at landfills.”

“Timber processors often use their waste wood materials to power boilers for heat or power. However, we can incorporate the waste heat energy from the wood-fired pyrolysis kiln into the boiler process.”

ADDITIONAL REVENUE

Mr Snoad is keen to emphasise that biochar is more valuable than just being used as boiler fuel. “Potentially it can become a revenue stream, while helping with climate change and positive public relations.”

Further, he notes that Pari Rikihana, a previous customer, successfully teamed with Crusader. “Pari has been designing and running various pyrolysis systems for the last 20 years, so is highly experienced with practical processes and general know-how when assisting our customers. He has worked with a number of prestigious entities including Massey University’s Prof. Jim Jones and his chemical engineering department, BlueScope, Solid Energy and Rayonier, just to name a few, as well as different councils around New Zealand.”

“His work includes a proprietary plug flow reactor, primarily developed to process CCA-treated timber in our pyrolysis combustion chambers to meet New Zealand’s arsenic emission standards, and to reduce CCA biochar/wood volumes, lock carbon in the ground, and reduce disposal costs at landfills.”

“The reactor took Pari and his team many years and a significant monetary investment to develop, and included important assistance from Brett Oldfield,

Cont P 9

From P 8

the owner of Combustion Control Limited here in Auckland."

TIMBER TREATMENT

Mr Snoad adds that Crusader Engineering is also an independent manufacturer of timber treatment plants (TTPs). "We not only work with timber processors, but also, historically, with reputable international chemical preservative suppliers, keeping us at the forefront of plant design and health and safety advancements."

"Our world-class process control and management reporting software gives our clients the advantages of complete software (and hardware) autonomy and flexibility."

"We offer a custom service, supplying compliant plants that meet customers' existing and future requirements. They range from large automated and sophisticated 'turnkey' systems to small, manual self-contained plants for the smaller or remotely situated operator."



Logs are sprayed onsite at the Crusader Engineering timber treatment plant. Image: Crusader Engineering

He adds that Crusader Engineering supplies quality, robust equipment, using superior componentry from reputable suppliers. "Our TTPs have proven to be excellent value for money, which is why we've had a good number of repeat business customers."

"We supply both aqueous and solvent (LOSP) based preservative TTPs and have enjoyed exporting many projects to Australia, Southeast Asia, Fiji, the USA and the United Kingdom over the years."

Crusader Engineering has also

BIOCHAR EFFECTIVELY LOCKS IN SOLID CARBON

undertaken numerous upgrades and additions to existing plant and software systems and continues to offer ongoing and comprehensive customer support.

Mr Snoad says the firm has also developed a radio frequency (RF) technology for its LOSP solvent removal and recovery system from timber with very low moisture contents.

"Furthermore, with RF we can also dry biomass down to similarly very low moisture contents to sterilise materials. An example of this is the proven ability to kill Legionnaires' disease in potting mix."

"Our philosophy remains one of continuous improvement and development, correctly believing that our future lies in offering the best and most up-to-date technology available."

"We partner with our customers for the long term and build strong relationships. Our customer's success is a successful outcome for Crusader Engineering and the whole team here works together to achieve this. We look forward to assisting more businesses."

To find out more, please refer to the company's website: www.crusaderengineering.co.nz

Wood Fuelled Biochar Pyrolysis Kilns

Waste wood is more valuable than just boiler fuel!

Known for our quality Timber Treatment Plants, Crusader has been supplying industrial biochar producing kilns for over 12 years.

Our carbon negative biochar kilns are fired by waste wood or slash, helping with climate change issues and eligible for carbon credits under the Emissions Trading Scheme.

We can process CCA treated wood with our optional proprietary arsenic emissions technology and reduce landfill volume and disposal costs.

Customised kilns for industry or hobbyist, fixed or transportable, optional automation, material handling and heat recovery systems.



Timber Treatment Plants

- Aqueous and solvent plants.
- Custom designs.
- Materials handling systems.
- Process control and reporting software.
- Exporting for 41 years.



CRUSADER
ENGINEERING

sales@crusaderengineering.co.nz
www.crusaderengineering.co.nz (+64 9) 2740811

Tasmania's best architecture on show at Hobart exhibition launch

THE Tasmanian Chapter of the Australian Institute of Architects launched the 2026 Tasmanian Architecture Awards Exhibition in Hobart last Thursday evening at Brooke Street Pier, showcasing the breadth and quality of architectural projects submitted to this year's state awards program.

The free public exhibition launch brought together architects, industry professionals, clients and the wider community to celebrate Tasmania's built environment.

The exhibition features entries from across the state in this year's Tasmanian Architecture Awards, highlighting projects that demonstrate innovation, sustainability, heritage sensitivity and design excellence across a diverse range of sectors and scales.

The exhibition will remain on show at Brooke Street Pier (12 Franklin Wharf, Hobart) until 9 June. All Tasmanians are invited to take a look at the breadth of new architecture being produced in the state and vote for their favourite project in the People's Choice for a chance to win Tasmanian prizes, either at the exhibition, or online here.

Also featured are projects eligible for the Henry Hunter Triennial Prize, recognising outstanding work completed over the previous three years in the heritage, interior architecture and small project architecture categories.

Tasmanian President, Daniel Lane, said the exhibition offered an opportunity for the public to engage directly with the architecture shaping Tasmania's communities, cities and landscapes.

"Architecture has a profound impact on how we live, work and connect. This exhibition celebrates the creativity and expertise of Tasmanian architects, and



1/ **The Forest is the Hobart based flagship campus of the University of Tasmania, designed by Woods Bagot.** Image: Tasmanian Chapter of the Australian Institute of Architects – Photographer: Peter Bennetts

2/ **Picnic Island Cabin was designed as an off-site pre-fabrication build with the goal of ecological integrity and a minimal footprint.** Image: Tasmanian Chapter of the Australian Institute of Architects – Photographer: Adam Gibson

3/ **Sandford is a new house design that honours the collection of family-built shacks made mostly from reclaimed materials.** Image: Tasmanian Chapter of the Australian Institute of Architects – Photographer: Adam Gibson

4/ **The Spring Beach House timber was specifically selected to give a natural look with the surround bushland.** Image: Tasmanian Chapter of the Australian Institute of Architects – Photographer: Tim Clark

within Tasmania's architectural profession, from small regional projects to significant civic and public works."

The award recipients will be announced at an awards presentation event on 30 May, to be held in Hobart.

The Tasmanian Architecture Awards form part of the national awards program run by the Australian Institute of Architects (AIA), recognising excellence in architectural design and practice across Australia. The AIA is the peak body for the architectural profession, representing over 13,000 members across Australia and overseas. The AIA actively works to improve the quality of our built environment by promoting quality, responsible and sustainable design. For more information, click here.

NOMINATED PROJECTS

Henry Hunter Triennial Prize eligible projects:

- The Shed, University of Tasmania | Wardle
- Glenorchy Child and Family Learning Centre | Morrison & Breytenbach Architects
- Philip Smith Centre | Lovell Chen
- Murdolo Apartments | ROSEVEAR STEPHENSON
- Finlay Street | Christopher Clinton Architect
- Arch South | ROSEVEAR STEPHENSON
- TERROIR Hobart Office | TERROIR
- Unshackled! - a convict memorial | Circa Morris-Nunn Chua
- Parliament Square | Design 5 - Architects, fjcstudio (formerly fjmstudio), JPDC and Years Months Days
- Inveresk Library, University of Tasmania | Wardle

the important role good design plays in creating vibrant, resilient and inclusive places," Lane said.

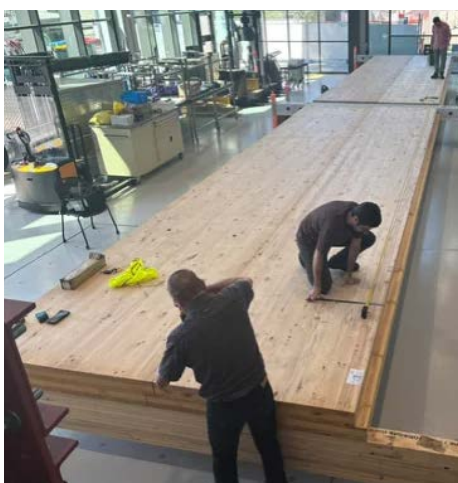
"The awards program continues to showcase the extraordinary depth of talent

New long-span floor research

INCREASING timber usage in commercial and multi-storey buildings is one of the key requirements of lowering the carbon cost of construction. To that end, the ARC Advance Timber Hub has been testing materials and system designs to support the confident use of long span timber and hybrid floor systems.

Last week, Professor Hassan Karampour of Griffith University, alongside project PhD Candidate Adam Faircloth, convened a highly engaging and collaborative project team workshop at Northrop Consulting Engineers in Sydney to share findings from an integrated program of laboratory testing, field measurements, occupant perception studies and industry engagement.

Insights included the importance of real-world building performance. Field testing has demonstrated that floor vibration performance often improves substantially after fit out, furniture and occupancy are introduced, and that performance evolves over the building lifecycle, highlighting the importance of



More timber floors in commercial builds will significantly lower the carbon cost. Image: supplied

testing at multiple stages.

Studies conducted as part of the project also showed that vibration measures accounting for duration and cumulative exposure correlate more strongly with occupant feedback. A central finding of the project is the mismatch between conventional vibration limits based on peak acceleration, and

how occupants perceive comfort and annoyance.

Effective performance improvements did not require heavier floors. The project has shown strong evidence that vibration and acoustic performance can be significantly improved through targeted, practical interventions, including improved connections, access floors and floating floor systems, and targeted damping solutions.

Importantly, the project has confirmed that vibration and acoustic performance in timber floors are inherently linked, particularly in long span and lightweight systems where low frequency behaviour governs both occupant comfort and sound transmission. Footfall induced vibration not only affects perceived floor stiffness and comfort but can also generate structure borne noise, contributing to acoustic non-compliance if not adequately addressed.

For a full set of findings and links to the wider research program, click here for the Advance Timber Hub Project Update.



Strategic Forest and Renewable Materials Partnership - Expressions of Interest

The Australian Government is seeking expressions of interest from experienced professionals across the forest and wood products industry to serve as members of the Strategic Forest and Renewable Materials Partnership. This is the Government's principal advisory body on the future strategic direction of Australia's forest and wood product industry.

Skills and experience

The Government is seeking a diverse and balanced membership with expertise across areas such as:

- Native and/or plantation forestry, timber fibre processing and/or advanced wood product manufacturing including engineered wood products, supply chain, trade and innovation
- Harvest, haulage and enabling services
- Environmental sustainability within a native and/or plantation forestry context including forest carbon
- First Nations community representation or engagement
- Trade union or industry association representation
- Experience in an advisory, governance or representational capacity
- Strong stakeholder engagement across government, industry and community

Members may be based anywhere in Australia. Individuals representing First Nations interests, emerging leaders and next generation voices are strongly encouraged to apply.

Appointment details

- Unremunerated advisory roles (approved travel costs reimbursed)
- Estimated commitment of around 5 days per year
- Appointments of up to three years, with the possibility of reappointment

How to apply

To submit your expression of interest, visit:



<https://directorsaustralia.com.au/jobs/the-forest-and-wood-products-council-strategic-forest-and-renewable-materials-partnership/>

Applications close 10.00 am Tuesday 30 June 2026

Forestry officer earns top honours in statewide TAFE NSW course

AT a career crossroads and looking beyond research work in the city, Elissa Tolson swapped the fluorescent lights and concrete walls of a lab for the towering blackbutt forests and bush tracks of the North Coast.

Before joining Forestry Corporation, Elissa, a Grafton-based Forestry Officer, worked as a research assistant at the University of Queensland's St Lucia campus in Brisbane.

"I was at a point in my career where I was sick of living in the grind of the city and wanted to return to the coast and try and find work outdoors instead of working inside of four walls every day," she said.

"I was working in a concrete basement laboratory and wanted to try something completely different."

Returning home to Coffs Harbour, Elissa found that change in forestry, stepping into an industry she says combines her passions of science, environmental management and life outdoors.

Now based in Grafton, her days are spent deep in native hardwood forests carrying out pre-harvest surveys, monitoring timber industry harvest operations and walking kilometres through rugged terrain assessing forest conditions.

"Most days I'm out in the bush, the place I'd rather be," she said.

"There's a real thrill to working outdoors. One day you're walking through steep country doing tree marking surveys, the next you're coordinating harvesting operations or working as a firefighter on fire deployments."

Elissa says the scientific aspects of the role drew her in immediately.



TAFE NSW Forestry Teacher Adam Farquharson (left) presents Forestry Officer Elissa Tolson with the G&J Groves Trophy.
Image: FCNSW

"I've always been interested in the environment and what surprised me most was how many different career paths there are in forestry, from ecology, to road planning, fire management, harvesting and environmental monitoring. There's so much more to the industry than people realise."

Since joining Forestry Corporation as a trainee forest technician, Elissa has completed extensive industry training and recently earned top honours in TAFE NSW's Certificate III in Forest Operations, taking out the prestigious G&J Groves Award for best student in the course.

Sponsored by G&J Groves, a fourth-generation Tumut family forestry operation, the award recognises

excellence across the two-year qualification, which is designed to give students a broad understanding of forestry operations throughout NSW.

TAFE NSW Forestry Teacher Adam Farquharson said Elissa stood out among the cohort of Forestry Corporation and Local Land Services staff and timber industry contractors, who undertook the course.

"Elissa really shone as a conscientious student and her work and assessments were consistently top notch," Mr Farquharson said.

"The course included field trips across the state covering coastal hardwoods in Grafton, softwood plantations in Tumut, cypress pine operations in Narrandera and red gum forests at Barham near the Victorian border.

"Students completed practical units in safety, log grading, fire operations and harvesting while gaining exposure to the many different sectors within forestry."

For Elissa, the course also reinforced the sense of community within the industry.

"It's been a great networking opportunity meeting people from across the state who you'd otherwise would probably only meet while working on a fireground," she said.

"As someone relatively new to the industry, it really showed me how broad forestry is and how many opportunities there are to keep learning."



The largest manager of commercial plantations and native forests in NSW
Visit us at forestrycorporation.com.au

Komatsu

PC270HW



The Komatsu PC270HW Extreme model was developed in collaboration between Komatsu Forest and Komatsu Osaka Factory to meet our tough forest conditions.

KOMATSU
Creating value together

Komatsu Forest Pty Ltd
+61 2 9647 3600
info.au@komatsuforest.com
www.komatsuforest.com.au

FTMA Conference 2026

At the crossroads: reframing for growth.

By **CAMPBELL McINNES**

THE Frame and Truss Manufacturers Association (FTMA) Conference 2026 was held on Monday 18 and Tuesday 19 May at the Novotel Sunshine Coast Resort. For the first time, the conference was opened to non-members, broadening participation, and contributing to a strong turnout of 264 attendees, an encouraging reflection of the event's growing industry appeal.

DAY 1 – NETWORKING, ACTIVITY, AND CONNECTION

Delegates were welcomed with a choice of relaxed networking activities designed to encourage connection in an informal setting. Options included golf at the Twin Waters Resort course, gel blasting (a softer alternative to paintball), or a scenic river cruise. While the Queensland weather didn't fully cooperate, spirits remained high, and enthusiasm was undiminished.

The evening icebreaker dinner embraced a Survivor-themed format, complete with coloured bandanas issued on arrival and a series of light-hearted games. The atmosphere set the tone for the day ahead, collaborative, energetic and engaged.

DAY 2 – AT THE CROSSROADS OF INDUSTRY CHANGE

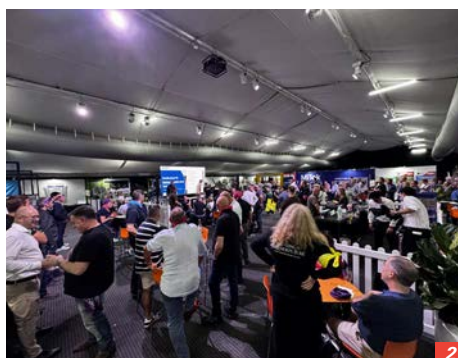
Registration opened at 7.30am, with the conference commencing promptly at 8.30am. This year's theme, "At the Crossroads: Reframing for Growth", captured a pivotal moment for the industry as it navigates shifting housing demands, evolving technologies and the next phase of growth and innovation for both manufacturers and timber producers.

FTMA CEO, Kersten Gentle opened proceedings with a warm welcome, setting the tone for a program that blended data-driven insight, practical strategy, and forward-looking discussion.

The first presentation, delivered by Tim Wood of IndustryEdge, titled "Housing at the Crossroads", provided a timely and data-rich overview of Australia's housing



Kersten Gentle, FTMA CEO setting the tone for the conference as a data driven, forward-looking space for the industry. All images: Campbell McInnes



1/ The 2026 FTMA Conference was well attended, with non-members allowed to join for the first time. 2/ The conference included icebreaker events and intentional spaces for networking and collaboration.

landscape. His analysis highlighted the direct implications for the timber fabrication sector and broader supply chain pressures, framing an important

question for delegates: what does your place look like in the housing system of the future?

From there, the program shifted into a panel discussion facilitated by Rhiana Robinson (FTMA), exploring "Building the Future of Lightweight Timber Framing". The panel featured Patrick Mitchell (AFWI), Louise Wallis (UTAS), Kevin Peachey (FWPA) and Andrew Dunn (TDA). The discussion reinforced the importance of collaboration across research, industry, and training bodies, particularly in advancing the Future Framing Initiative.

Tim Cleary of ForestWorks followed with The Launch of Timber Systems Designer Online Training program, an initiative developed in partnership with FTMA and ForestWorks to support skills development across the sector.

Morning tea offered a welcome pause, giving delegates the chance to reconnect and continue conversations sparked in the morning sessions.

The program resumed with a candid and insightful interview led by Kersten Gentle, "The True Cost of Running a Manufacturing Business", featuring George Prothero of Chrisdar Consulting. Drawing on his experience owning and selling a successful frame and truss business, Prothero offered practical reflections on operational realities and long-term business value.

Next, Damien Lacey of OE Partners delivered "Optimise Before You Automate", sharing lean manufacturing principles, real-world case studies and a practical set of "eight golden rules" for successful automation. The session reinforced the importance of process discipline before technology investment, finishing with an engaging Q&A.

Julia Hall of Twenty Nine Ideas then explored "How to Reframe for Growth That Actually Works", focusing on practical approaches to goal setting, communication and marketing alignment to support sustainable business growth.

From P 14

Lunch provided an opportunity for delegates to engage with suppliers and sponsors, with exhibition stands bustling as conversations continued over new technologies, products and services shaping the sector.

The afternoon keynote, delivered by internationally recognised speaker Michael McQueen, brought a future-focused lens to the program with "Preparing Now for What's Beyond the Crossroads". Challenging delegates to adopt a "future-ready" mindset, McQueen underscored the pace of change across industries. Referencing Lao Tzu, he captured the sentiment of the session with a simple reminder: "Resisting change is like trying to hold your breath. Even if you're successful, it won't end well." The message was clear; adaptation is no longer optional.

Tim Wood returned to close the speaker program with "What the Market Is Telling Us", drawing on insights from the Frame & Truss Sector Overview (FATSO), Edition Eight (November 2025), to provide a grounded view of current market conditions and future expectations.



1/ Panellists L to R: Louise Wallis (UTAS), Patrick Mitchell (AFWI), Andrew Dunn (TDA), and Kevin Peachey (FWPA).

2/ The conference featured a diverse range of exhibitors, showcasing products while fostering practical networking and industry collaboration.



CELEBRATING INDUSTRY ACHIEVEMENT

The National Conference Dinner brought delegates together once more for the FTMA Awards, recognising outstanding contribution and achievement across the industry:

- **FTMA Community Award** – Versace Timbers
- **FTMA Jackson Kidd Wellbeing Award** – AAA Advanced Trusses
- **Inaugural Industry Icon Award** – Peter Taylor, Multinail
- **Clive Martella Service to Industry Award** – Gary Walker, Belmont Timbers (NSW)

A full conference report will be featured in the upcoming edition of *Timber Trader News*, issue July/August which is currently in production. To view the magazine, visit <https://www.timbertradernews.com> or subscribe to the print edition at <https://www.timbertradernews.com/subscriptions/>

The conference concluded with a wrap-up from FTMA Board Member Jamie Dahlsen, followed by closing remarks and thanks from Kersten Gentle, officially drawing the 2026 conference to a close.

DESCARTES

GLOBAL LEADER IN PARAMETRIC (RE)INSURANCE SOLUTIONS

Providing precision protection against bushfire & carbon credit risk

20+ PERILS

From NatCat to extreme weather risks

UP TO A\$120 MILLION

Capacity for climate risks

BENEFITS

- Customised protection 
- Financial certainty 
- Transparency & flexibility 
- Swift payouts 

TO FIND OUT MORE

descartesunderwriting.com/solutions/bushfire



Industrial waste used to develop non-toxic wood protection

NEW research into an environmentally friendly method for wood preservation by University of Copenhagen researchers Emil Thybring and Sune Tjalfe Thomsen originated in a project aimed at developing biofuels for ships but evolved during the process. The path to new inventions is rarely straight or predictable, and this has certainly been the case for Emil Thybring and Sune Tjalfe Thomsen. For several years, they have been working on a new, sustainable way to impregnate wood without harming the environment.

Today, the wood industry treats timber with heavy metals such as copper to extend its lifespan when used as a construction material. In the pressure treatment process, water with dissolved preservation chemicals is forced into the wood. The problem is that a large proportion of these substances is later leached out when the wood is exposed to rain, ultimately ending up in soil, marine environments and drinking water.

“The toxic substances we introduce into the wood using water to make it last longer also leave the wood with water and end up in nature. It is a serious problem, and one we aim to solve with our technology,” said Emil Thybring, associate professor at the Department of Geosciences and Natural Resource Management.

THE WOOD'S OWN ‘GLUE’, IN HYPER CONCENTRATED FORM

The researchers’ method is based on lignin, a natural binding agent in wood that stiffens the material and holds its cells together. Lignin is available in vast quantities as a residual product from



1/ **Hyperlignification gives the wood a brown colouration. The researchers are working on controlling the degree of coloration. At the same time, it avoids the acid-green colour that is typical from pressure-treated wood found in hardware stores, where heavy metals such as copper are used.**

2/ **Lignin in powder form as it comes from paper mills.** All images: Sune Tjalfe Thomsen

the paper industry, where it is separated out and typically burned because it gives paper a brownish colour rather than the desired white. According to the researchers, just 15 percent of the EU’s lignin production could replace the environmentally harmful substances used across the entire EU production of pressure-treated timber.

“It makes perfect sense to take a global industrial by-product and use

“THE TREATMENT HAS THE POTENTIAL TO SIGNIFICANTLY REDUCE THE RATE OF DEGRADATION”

it as an environmentally friendly alternative to the most widely used, and environmentally damaging, wood protection methods we rely on today,” said Sune Tjalfe Thomsen, associate professor at the Department of Geosciences and Natural Resource Management.

By dissolving lignin in alcohol, the researchers have succeeded in creating an extremely concentrated solution with such a high lignin content that it can impregnate wood very efficiently, a process they have dubbed “hyperlignification”.

“Others have previously considered using lignin as a wood preservative and experimented with relatively dilute solutions. We work with much higher concentrations, which truly saturate the wood and protect it against fungal decay and rot,” said Emil Thybring.

BLOCKING FUNGI AND MOISTURE

The method works by dissolving lignin, a natural binding agent in wood, in an alcohol-based liquid, allowing it to penetrate the wood’s microscopic structure. The researchers use a process similar to conventional pressure impregnation, in which the liquid is forced into the wood under pressure. The key difference is the much higher lignin concentration, making it possible to fully ‘saturate’ the wood with the natural material.

Once inside the wood, the lignin alters the material’s internal composition, making it far less attractive to wood-degrading fungi. At the same time, the wood’s ability to absorb moisture is reduced, which is one of the primary drivers of biological degradation. The

result is a wood material that is far more resistant to the mechanisms that normally lead to rot and decay.

“In laboratory trials, where we expose the wood to some of the most aggressive wood-degrading fungi under optimal growth conditions, we see a striking difference

between untreated and hyperlignified wood. For example, tests on pine and beech show that when fungi have decomposed around 50 percent of untreated wood, they have only broken down about 1 percent of the hyperlignified wood,” said Sune Tjalfe Thomsen.

These results indicate that the treatment has the potential to significantly reduce the rate of degradation. The findings were obtained under controlled laboratory conditions. An important next step is therefore to assess the effect at larger scales and under realistic outdoor conditions.

FROM BACKYARD EXPERIMENTS TO FULL-SCALE RESEARCH

Ensuring that wood withstands outdoor exposure is not a new interest for Emil Thybring and Sune Tjalfe Thomsen, who could best be described as researchers with a long-standing interest in wood durability. For years, Emil Thybring conducted his own experiments in his backyard, testing various natural wood protection methods and monitoring them over time.

Today, that interest has evolved into a full-scale



A simple test of water uptake in hyperlignified wood blocks (left) and untreated beech wood blocks (right) shows that the treatment significantly reduces moisture absorption, which helps increase durability. Image: Sune Tjalfe Thomsen

THE HYPERLIGNO PROJECT

- The Hyperligno project has received DKK 15.5 million in funding from Innovation Fund Denmark to further develop the research for industrial application.
- Last year, the researchers won the European innovation competition “Evergreen Prize for Innovation” and received EUR 300,000.
- The researchers behind the project are Associate Professor Emil Thybring and Associate Professor Sune Tjalfe Thomsen from the Department of Geosciences and Natural Resource Management at the University of Copenhagen.

research project, which has recently received more than DKK 15 million in funding from Innovation Fund Denmark’s Grand Solutions programme. Last year, the researchers also won a major European innovation competition, the “Evergreen Prize for Innovation”, receiving EUR 300,000 to further develop their

“JUST 15 PERCENT OF THE EU’S LIGNIN PRODUCTION COULD REPLACE THE ENVIRONMENTALLY HARMFUL SUBSTANCES

non-toxic wood protection technology.

The Grand Solutions project has been named “HYPERLIGNO” and was officially launched on 1 April. In collaboration with Frøslev, Denmark’s largest timber supplier to the construction industry, as well as architects and other partners, the project aims to bring the research from the laboratory into production, transforming new knowledge into new wood products.

“We need to dive deep into the lignin molecules because we can see that certain types of lignin penetrate deeper into the wood and provide better protection. This allows us to identify the optimal lignin source from the paper industry,” explained Sune Tjalfe Thomsen.

The Hyperligno team aims to develop a product that could replace today’s toxic wood impregnation methods in Denmark and across Europe. At the same time, the EU is moving towards stricter regulation of biocides in wood, with a phase-out expected by 2030.

Source: University of Copenhagen, Faculty of Science.
Click here to view article.



Timber Media
AUSTRALASIA

Timber & Forestry Enews is an authoritative and rapid deliverer of news and special features to the timber and forest-based industries in Australia, New Zealand and internationally. Enews is delivered weekly, every Thursday, 48 weeks of the year. Advertising rates are competitive with other industry publications. Timber & Forestry Enews hits your target market – every week, every Thursday!

HEAD OFFICE

Timber Media Australasia Pty Ltd
PO Box 3001
Maraylya NSW 2765

PUBLISHER

Timber Media Australasia Pty Ltd

EDITORS

Donyale Harrison
Jess Hockridge
Nicky Ainley
editors@timberandforestryenews.com

ADVERTISING

Campbell McInnes // +61 (0) 406 223 007
campbellm@timberandforestryenews.com

ACCOUNTS

Chris Parker // +61 (0) 413 710 203
cparker@ttnews.com.au

SUBSCRIBE

www.timberandforestryenews.com



The information contained in this publication has been obtained from sources assumed to be reliable. However, the publishers disclaim all warranties as to the accuracy, completeness, reliability or adequacy of the information displayed. Opinions expressed in Timber & Forestry enews are not necessarily those of directors or the Timber & Forestry enews team. We do not accept responsibility for any damage resulting from inaccuracies in editorial or advertising. The publishers are therefore indemnified against all actions, suits, claims or damages resulting from content in this publication.

CLASSIFIED ADVERTISING

PRODUCTS & SERVICES

BUY AND SELL -

New and Used
Machinery/Equipment

- FOR SALE - SCM Superset
NT Moulder - **PRICE REDUCED**

Click for info

Click this link to
advertise online...

ADVERTISING PACKAGES

PACKAGES:

Click this link
to learn about
advertising
packages...

EMPLOYMENT

LATEST JOBS:

- Strategic Forest and Renewable
Materials Partnership –
Expressions of Interest
- Forester
- Senior Forester - QLD
- Woodworking Machinery Sales
Representative - QLD / NSW / VIC

Click to apply

Click this link to
advertise online...

ADVERTISING INFORMATION

ARTWORK DEADLINES

Display ads: *Book one week prior to publication.*

Supplied artwork: *One week prior to publication.* Supply hi-res jpg or pdf to our specifications. This is a digital publication, therefore **NO crop marks or bleed is required.**

JOB ADS ARE COMPLETED ONLINE.

Go to www.timberandforestrynews.com/post-a-job/ to place a job vacancy. **Book by 12noon Tuesday prior to publication.** Job ads are for individual positions. If more than one position is to be advertised, separate ads will need to be created. **To upload more than one position at the same time, please log out of your job account between each job upload.**

BUY & SELL ADS ARE COMPLETED ONLINE.

Go to www.timberandforestrynews.com/product/buy-sell-advertisement/ to place an ad.

Book by 12noon Tuesday prior to publication.

PAYMENT TERMS

New clients invoiced on booking. Existing clients 14 days.
All other standard terms & conditions apply.