

FOR OVER
18 YEARS
DELIVERED
WEEKLY TO
15,200
GLOBAL
READERS

Like and
follow us on



ISSUE 850 // May 15 2025

timber & FORESTRY *e*news

JOBS:

- Plantation Assessment Officer
- Sandalwood Operations Officer

[Click to apply](#)



Sydney Build Expo 2025 Recap

COVER STORY P 2

1075C

**UNMATCHED
PRODUCTIVITY.
UNMATCHED
RELIABILITY.**

Tigercat



*Do you
have
a job
position
to fill?*

[ADVERTISE TODAY](#)



**timber
& FORESTRY *e*news**

Have your say

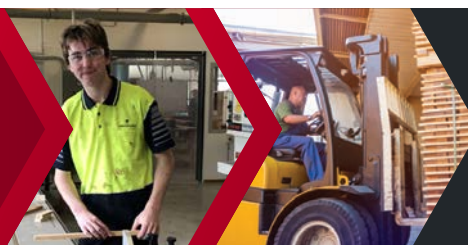
Help shape the
future of
sustainable
forest certification.

[Click to find out how.](#)



ALL UNDER ONE ROOF

- IR SUPPORT
- TRAINING
- EMPLOYMENT
- WHS
- COMMUNITY



NTHA
NATIONAL TIMBER &
HARDWARE ASSOCIATION

1800 822 621

Sydney Build Expo 2025

With over 30,000 ticket registrations, Sydney Build Expo 2025 was a major success.

By **CAMPBELL McINNES** and **CHRIS PARKER**

TIMBER and *Forestry Enews*, alongside our sister publication *Timber Trader News*, proudly served as official media partners for Sydney Build Expo 2025, with both publications featured on page 61 of the event's show guide.

Sitting across two floors and covering six halls, ICC Sydney exhibition centre was bustling with over 600 exhibitors, presentation stands with a range of speakers, lights, colourful characters, coffee outlets, a bar, lounges and, of course, lots of people – an estimated 5000 more than last year.

A notable inclusion this year were the number of business trade representatives and consulates which included Brazil, Dubai, Hungary, India, Indonesia, Italy, Japan, Spain, the United Arab Emirates, Vietnam, and USA.

It was positive to see the number of banners and stands promoting PEFC (Responsible Wood) and FSC as part of their offering. Australian Made had a



The Sydney Build Expo brought together leaders in construction and timber industries from around Australia and the globe. All photos: courtesy Campbell Mc Innes and Chris Parker.

booth and the Australian Made logo was also included in many local banners around the halls.

As part of our visit we meet with Marco Zammarrelli, Head of International Economic Development and Head of Southeast Asia Network at the Australia Vietnam Business Council. He was only too pleased to discuss trade and economic ties between our countries, along with the push from Vietnam to export more timber and timber products.

During our rounds we came across several pairs of colourful characters in various costumes, all of whom were keen to have a look at

our sister publication *Timber Trader News* and 'advertise' to those around us. These circus-like performers created a fun atmosphere and many booth representatives got involved with the fun becoming part of their acts.

At the Timberlink trade booth we meet Glenn Jefferys and Sue Wood. Both have a long history working in the timber industry and for Timberlink. The Timberlink booth proudly had the company's dual certifications with PEFC (Responsible Wood) and FSC on display, as well as core products including indoor and structural timber,

NeXTimber – cross laminated and glue laminated timber products – plus pallet and crate timber and, a recent addition to their range, Everdeck wood composite products.

The Mitre 10 trade booth was filled with various

staff from stores all around Sydney and the Central Coast. They had a working filtration matt on display, capturing left-over contaminants (we noted the matt was filthy) while allowing clear water to drain through to a bucket – ideal for a work site. A specialist supplier with breathing, eye and face protection was demonstrating the latest in personal protection.

Mitre 10 was focused on 'Whole of House' solutions, with experts available and ready to help, just as you'll find in the Mitre 10 stores.

Cont P 3



Preserve the Future, Preserve Timber





Choose a timber preservative that is suitable for use in all of your project applications.

- Vegetable Gardens
- Decking
- Garden Retaining Walls
- Playground Equipment
- Landscaping in Schools

www.kopperspc.com.au
1800 088 809

From P 2

With Australia's growing demand for timber, Malaysian Timber Council was on hand with their exhibition booth helping to coordinate suppliers of premium certified timber and Australian buyers. The MTC staff had various hardwood species and profile samples on display and were keen to advise visitors of the vast range of products Malaysian producers have available for export. Faisal Shah Z., Business development and Operations Manager was heading up the booth.

Empowered Women in Trades (EWIT) is all about unlocking career pathways and increasing gender diversity. Their mission is to empower women to learn a trade, undertake an apprenticeship and secure a pathway, and in turn help resolve the national skills shortage.

The EWIT booth had their pink boots proudly on display along with a range of materials and helpful information on what they can offer to help your business grow.

Simpson Strong-Tie were showcasing a new SDWF Floor-to-Floor screw, a unique design with wind-uplift restraint, enabling it to attach upper and lower walls together from the top, spanning across the floor system. They of course also had a range



1/ Marco Zammarrelli, Head of International Economic Development and Head of Southeast Asia Network at the Australia Vietnam Business Council (centre) with Campbell Mc Innes (left) and Chris Parker from Enews.

2/ The ICC Sydney exhibition centre was bustling with over 600 exhibitors.

3/ It was inspiring to see how many companies were proudly displaying their sustainable PEFC and Responsible Wood certifications.

4/ Glenn Jeffreys and Sue Wood from Timberlink were representing the company's extensive range, including its NeXTimber engineered products.



of their other products on show including some of their specialised screw range.

The Multinail Advance stand was very popular. There was a constant flow of enquiries from professionals looking for the

latest construction methods and physical components and the Multinail green backdrop was a standout, which set them apart from most other stands with their standard white backdrops. Moments

after we took our photo of the stand, the first of many large groups of fabricators and builders with questions descended and it proved too

Cont P 4

**AUSTRALIAN
TIMBER
MAKES A
HOUSE
A HOME**
www.forestfacts.com.au



From P 3

difficult to grab a photo of Travis Taylor, Muhammad Lfthar and Chelsea Cheng alone for the whole rest of the day.

The Sydney Build Expo 2025 proved to be a resounding success. The event showcased a diverse range of exhibitors, including a large number of international representatives.

Visitors were treated to a vibrant atmosphere filled with industry leaders, hands-on product demonstrations, and interactive exhibits. From innovative timber products to cutting-edge construction technology, the expo highlighted the evolving landscape of the timber and

building industries while offering valuable networking opportunities for professionals and business leaders alike.

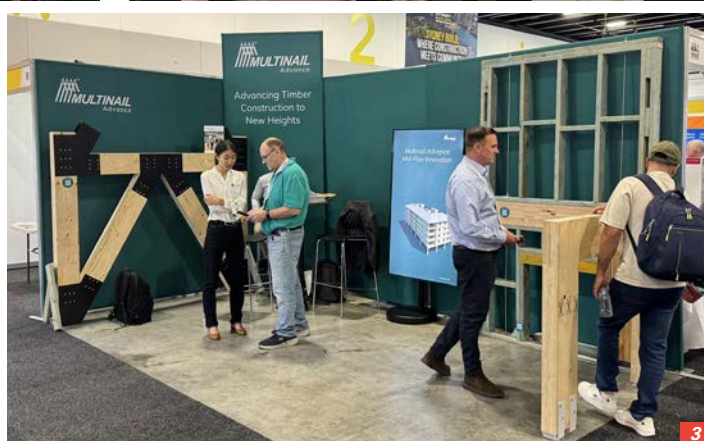
For details on Sydney Build 2026 and the post-show report when it is published, click here for expo news.



1/ The Mitre 10 team had brought many of the experts that make their Whole of House solutions work for builders.

2/ Melinda Davis and Caz from Empowered Women in Trades shared their proactive message with visitor Polly Britten.

3/ Multinail's green stand was a focal point for builders seeking expert assistance.



On the cover: The expo connected timber experts, here (from left) Wyn Sheng Liew from the Malaysia Timber Merchant Exchange Point with Enews' own Campbell McInnes and Faisal Shah Z. and Nur Adelin Mohd Haris from the Malaysian Timber Council. Photo: courtesy Campbell McInnes and Chris Parker



Free Safety Roadshow is on its way

**Coming to a NSW town near you!
August & September 2025**

- Listen to a member's experience of what happens when things go so tragically wrong.
- Learn about your legal obligations.
- Take away a free suite of customisable WH&S tools and resources.

Pre- Register your intention through the QR code to attend to secure your place, as limited numbers of places will be available.



Forestry minister stays on

The new-look Federal Cabinet has strong forestry experience.

AT the time of writing, the last seat and Senate counts from the 3 May election are still trickling in, but the returned Albanese Government has already sworn in its restructured Cabinet for the 48th Parliament. Julie Collins MP has held onto her position as Minister for Agriculture, Fisheries and Forestry, while Senator Murray Watt has moved to the Environment portfolio.

In industry-related positions, Clare O'Neil MP has been re-appointed as Minister for Housing and Senator Anthony Chisholm returns as Assistant Minister for Agriculture, Fisheries and Forestry, while Senator Tim Ayres has been appointed as Minister for Industry and Innovation and Josh Burns MP announced as the new Special Envoy for Social Housing and Homelessness.

“THE GOVERNMENT CAN FOCUS ON FAST TRACKING KEY HOUSING COMMITMENTS

The decisions have met with broad approval in the sector.

“On behalf of Australia's forest industries I welcome back and congratulate Julie Collins on her re-appointment as our Minister,” Diana Hallam, CEO of AFPA, said.

“Julie has an outstanding record of stewardship and delivery for our sector, and we look forward to continuing our positive and close working relationship. We also welcome Murray Watt to the Environment portfolio. As a former Minister for Forestry, Senator Watt has an excellent understanding of our industries and regulatory framework, so we look forward to working constructively with him, also.

“It's a very important time for the forestry portfolio,



Returned Forestry Minister Julie Collins is described by AFPA as having an “outstanding record” in the sector. Image: courtesy Julie Collins MP/Facebook

as the sector works to realise our climate and manufacturing potential while facing numerous challenges including securing resource supply and dealing with a depressed construction market along, with ensuring we have a skilled workforce geared to needs.”

The Housing Industry Association (HIA) also welcomed the

announcements, in particular the expansion of the housing portfolio to take in the future cities planning and a separate special envoy focused on social housing and homelessness.

“By having a dedicated special envoy focused on social housing and homelessness, this will provide Housing Minister, Clare O'Neil with the ability to pull out all stops and focus on fast tracking the implementation of the key housing commitments set out in the lead up to the election to boost housing supply and increase home ownership rates,” said HIA Managing Director, Jocelyn Martin

Both organisations expressed their members' intent to work with the government to progress the various programs designed to meet key needs including housing and the soon-to-be-released Timber Fibre Strategy, as well as the new ReMade in Australia brand announced during the election campaign.

Have your say

Help shape the future of sustainable forest certification.



responsiblewood.org.au



Responsible Wood and PEFC Australia & New Zealand are calling on stakeholders to:

- Complete a short survey to inform future initiatives, communications and system improvements.
- Nominate for our Standards Committees and contribute to the next review of AS/NZS 4708.



Responsible Wood

RW/1-10-1



Forestry Australia calls for nominations

A set of prestigious awards are in wait for this year's forestry leaders.

FORESTRY Australia is calling for nominations for three of the highest honours in the field of forestry and forest management in Australia: the N.W. Jolly Medal, the Prince of Wales Award and Forestry Australia Fellows.

The N.W. Jolly Medal is Forestry Australia's highest and most prestigious award, named in honour of Norman William Jolly (1882-1954), who made a remarkable contribution to the development of professional forestry in Australia in the early 20th century.

This award celebrates those who have demonstrated exceptional service to forestry, reflecting the diverse and significant contributions made across a wide range of disciplines and forest management activities.

Former recipient Rob Youl OAM said the Norman Jolly Medal recognises and celebrates the increasing diversity of Australian forestry, and demonstrates that the breadth and philosophy of forestry training have wide appeal to employers and institutions. Youl was recognised both for his work in farm forestry, revegetation and urban ecology and for his long commitment to Landcare Australia. He was founding chair of Australian Landcare International and is currently on the Board of Global Landcare.

Dr Christine Stone, renowned for her work on forest health and the application of remote sensing technologies, received the award in 2017. "I was honoured to be the first woman to receive Forestry Australia's highest award, the N.W. Jolly



1/ Dr Christine Stone was the first woman to receive Forestry Australia's highest award, the N.W. Jolly Medal.

Photo: courtesy Forestry Australia



2/ Another N.W. Jolly Medal winner, forester Rob Youl was pivotal in the formation and success of Landcare.

Photo: courtesy Forestry Australia



3/ Jenna Hammond is now sharing her passion for engaging with stakeholders on behalf of Private Forests Tasmania.

Photo: courtesy PFT

Medal," Dr Stone said.

"Since then, the Forestry Australia Board Directors and Jacquie [Martin] have made significant progress in promoting gender equality, both within Forestry Australia and more broadly in the forestry profession.

"I therefore encourage the nomination of women for this year's awards."

In 2023, the N.W. Jolly Medal was awarded posthumously to Dr Kevin Tolhurst, who was aware, and delighted, that he was receiving the Medal and sadly passed weeks before the presentation.

CEO of Forestry Australia, Jacquie Martin said generations of foresters and forestry scientists were inspired and influenced by Dr Tolhurst.

"Kevin Tolhurst was generous with his knowledge and time, and ever the gentleman who was always considerate and kind.

"It speaks to Kevin's intellect that he was nationally and internationally recognised as an expert in a wide range of areas – fire ecologist, fire

scientist, professional forester, lecturer, practitioner, academic and collaborator.

"Kevin's legacy will continue to endure through the practices that he created that continue to shape how we manage fire, and through today's N.W. Jolly Medal."

The Prince of Wales Award recognises the achievements of an outstanding young to mid-career forest professional. This prestigious award honours individuals who have made significant contributions to forestry practice, innovation, and leadership at an early stage of their career.

Awardee Jenna Hammond said she was incredibly honoured to receive the Prince of Wales Award in 2023 for her role as Senior Engagement Advisor with Sustainable Timber Tasmania and her volunteer contributions within the sector including Forestry Australia.

"I'm passionate about making forestry more inclusive and engaging for young professionals," Hammond said.

"Promoting the benefits of active forest management and

supporting and inspiring the next generation to consider a career in forestry is important to me."

The title of Forestry Australia Fellow is an honour bestowed upon a voting member of the Association who has been recognised by their peers for their outstanding service to the forestry profession and to Forestry Australia.

In 2018 Dr Kerrie Catchpoole was awarded a Forestry Australia Fellowship.

"I have always been proud to be a member of Forestry Australia as it is underpinned by integrity, professionalism, and people who genuinely care about forests," Dr Catchpoole said.

"I would encourage you to come forward and nominate members for this year's awards who you believe have stepped up and made a valuable contribution to the organisation".

Nominations close at 5pm (AEST), Monday, 28 July.

More information can be found here <https://www.forestry.org.au/merit-awards/>

MAY

26-30: LIGNA 25 – Hannover, Germany. The world's leading trade fair for woodworking and wood processing plant, machinery and tools. For more details visit <https://www.ligna.de/en/for-visitors>

30: NTHA SA/NT/WA State Awards – National Wine Centre, Adelaide. Join us in celebrating the SA, NT & WA Timber and Hardware Industry. Contact Tahlia at events@ntha.com.au

JUNE

20-22: Perth Home Show – Perth Convention and Exhibition Centre, Perth 10.00am - 5.00pm daily. Explore hundreds of home related products, exclusive Show specials, attend free seminars, and gain insights from top Australian renovation and building experts. For more information and to book tickets, visit <https://homeshows.com.au/perth/>

22-26: World Conference on Timber Engineering –

Brisbane. WCTE is the world's leading scientific forum for the presentation of the latest technical and architectural solutions and innovations in timber construction. For more information visit <https://www.wcte2025.org/event/df0d5655-c16d-47df-b4a6-457a7dc63d96/wcte-2025>

29-JULY 2: 5th International Conference on Timber Bridges – Rotorua, New Zealand. The focus is on timber bridges and the current need for resilient infrastructure to support thriving communities. For more information and to register your interest, visit <https://ictb-conference.org/2025/>

30: WoodSolutions Workshop "Timber in a carbon neutral environment" – Pridham Hall, Adelaide. 8.30am - 3.30pm. Discover how timber is reshaping the future of sustainable construction. For more information and reserve your place visit <https://www.eventbrite.com>

[com.au/e/woodsolutions-workshop-timber-in-a-carbon-neutral-environment-tickets-1363725101489](https://www.wcte2025.org/event/df0d5655-c16d-47df-b4a6-457a7dc63d96/wcte-2025)

SEPTEMBER

2-3: Timber Queensland Biennial Conference "Doing Timber Business in Queensland" – Brisbane.

For more information, email admin@timberqueensland.com.au

OCTOBER

13-14: Timber Construct 2025 – Melbourne. To register your interest, visit <https://timberconstruct.org/>

20-22: International Woodchip and Biomass Seminar and Networking Event – Singapore. For more information visit <https://danaevents.co.nz/2024singapore/home>

20-23: Forestry Australia 2025 Conference – Adelaide Convention Centre, Adelaide. The conference theme is 'Restoring forests and landscapes to secure Australia's future' and

aims to develop both local and national collaboration. For more details visit <https://www.forestry.org.au/2025-conference/>

22-23: Melbourne Build 25 – MCEC, Melbourne. Victoria's largest construction and design show. For more details visit <https://melbournebuildexpo.com>

23-24: Field Trip – Vietnam. (Follows on from the woodchip and biomass seminar in Singapore.) For more information visit <https://danaevents.co.nz/2024singapore/fieldtrip>

24: GTTIA – The Barn, Mt Gambier, SA. Nominations are now open for 2025 Green Triangle Timber Industry Awards. Nominate online: <https://gttia.com/nomination-form/> For full details on award categories and submission guidelines, visit: <https://gttia.com/2025-award-categories/>



Are you following us on social media?

Please like and share our page so we can get the timber and forestry message out to a bigger audience. If you like our publication, please leave us a review.



A CUT ABOVE...

Do you crosscut timber packs at ± 1 mm accuracy?

Or cut structural timber, panel products (MDF & LVL), paper rolls?

Or produce pallet dimensions or studs on fixed lengths?

HOLTEC has a solution for you!

Our scope of supply:

- Mobile and stationary chainsaws
- Timber crosscut stations
- Log cutting stations
- Circular saws

- Mechanisation
- Sorting lines
- Scanning and optimising systems
- Special systems



For more information contact:



Ph: +64 9 416 8294 // Fax: +64 9 416 8296
Email: sales@holtec.org // Web: www.holtec.org

Reimagining Timber

MELBOURNE Design Week is famous for including events that challenge how we understand aspects of design. This year, a free exhibition titled Reimagining Timber: Adaptive Structures From Out-of-Grade Wood, will be presented by architect Dr Ding Wen 'Nic' Bao of RMIT University and architect Dr. Dan Luo and engineer A/Prof Joe Gattas from The University of Queensland.

As the program describes the project: Timber is a cornerstone of sustainable construction, valued for its renewability, carbon sequestration potential, and low embodied energy. However, a significant proportion of structural sawn timber – primarily sourced from softwood plantations – is classified as 'out-of-grade' due to variations in stiffness, strength, or other material

inconsistencies. As a result, much of this timber remains underutilised or wasted.

This project reimagines out-of-grade timber as a high-performance, customisable structural material through an intelligent design and construction methodology that integrates architecture, computational design, structural engineering, behavioural algorithms, and advanced manufacturing. By leveraging topology optimisation, augmented reality (AR)-assisted assembly and robotic fabrication, the project establishes a real-time material processing system that forms a closed-loop feedback mechanism for structural adjustment and adaptive reuse.



The team reimagines what can be done with timber previously declared out-of-grade. Image: supplied

This approach fundamentally rethinks conventional sequential workflows in architecture and construction.

The exhibition showcases a series of scaled prototypes that explore this methodology, demonstrating its potential for long-span, large-scale timber structures. These prototypes highlight efficient fabrication workflows that leverage AR-assisted discrete assembly techniques, enabling precise construction while fostering closer collaboration

between architects and structural engineers. By challenging traditional classification systems and fabrication constraints, the project envisions a future where timber construction is not only materially

efficient, but also structurally expressive and technologically integrated.

This project is part of the Australian Research Council (ARC) Advanced Timber Hub.

The exhibition is free, with no booking required, open from 9am to 5pm 22–25 May at Design Hub Level 1, Building 100, RMIT University.

For more on Dr Bao, Dr Luo and Associate Professor Gattas, click [here](#).

GLOBAL LEADER IN PARAMETRIC INSURANCE SOLUTIONS

UP TO A\$100 MILLION CAPACITY FOR CLIMATE RISKS

PRECISION **BUSHFIRE FINANCIAL PROTECTION**, TAILORED
TO YOUR EXPOSURE NEEDS

BENEFITS:

- FINANCIAL CERTAINTY & PRICE RELIABILITY
- TRANSPARENCY
- SWIFT PAYOUTS
- FLEXIBILITY

TO FIND OUT MORE, CONTACT US AT

<https://descartesunderwriting.com/contact-aus>

Rangers crack down on illegal activity

QUEENSLAND Parks and Wildlife Service (QPWS) is reminding visitors about the serious consequences of illegal activity in State forests and national parks.

Rangers have observed a concerning increase in unsafe and unlawful behaviour across State forests and national parks including Wondai and Benarkin State Forests in recent months.

Of particular concern is the number of adults and children riding unregistered motorbikes, not holding valid rider licences and failing to wear helmets, increasing the risk of serious injury.

Rangers also found an increase in people camping without a permit.

Easter enforcement activity has resulted in the issuing of several Penalty Infringement

Notices including:

- \$1209 issued for operating a vehicle with an unrestrained child;
- \$322 for failure to wear a helmet while riding a motorbike;
- \$322 for camping without a permit; and
- \$322 for driving/riding an unregistered vehicle.

QPWS Senior Ranger Luke stressed that the same rules that apply in public and on public roads also apply in state forests.

"These rules exist for a reason. Those who choose to disregard these regulations are putting themselves and others at risk, damaging



The same rules regarding motor vehicles that apply on public roads also apply in state forests. Image: Shutterstock

these delicate ecosystems, and spoiling the camping experience for responsible visitors," he said.

"You would not do it in the main street of Wondai, the local botanic gardens or your backyard, so don't do it in a State forest or national park."

Ranger Luke also highlighted the importance of camping permits.

"Permits help to prevent

overcrowding, protect wildlife and ensure a safe and enjoyable experience for all visitors.

"At just \$7.25 per person, a permit is a small price to pay to camp in some of Queensland's most spectacular locations."

QPWS will continue to conduct regular patrols of State forests in the South Burnett including Wondai and Benarkin State Forests, and those caught breaking the law will face heavy penalties.

Any illegal activity in national parks and State forests can be reported anonymously by calling 1300 130 372.

**RENEWABLE
SUSTAINABLE
RELIABLE
SECURE**

P: 07 3147 8790
E. sales@vidawood.com

Hyne Community Trust

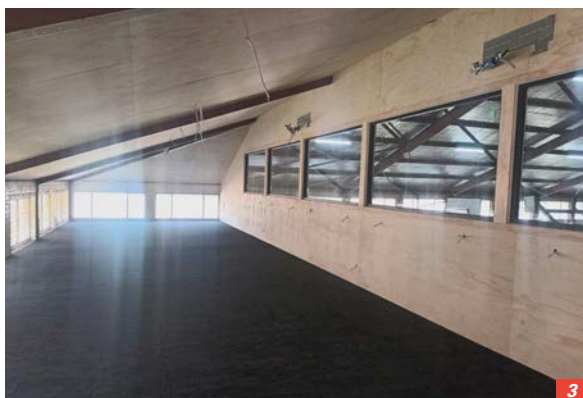
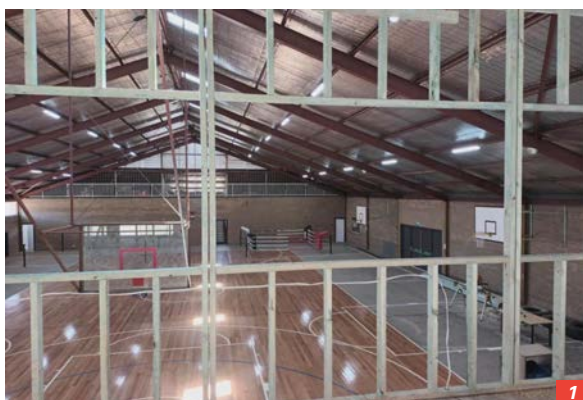
Applications open soon for this year's round of grants.

OUR best timber suppliers have well-earned reputations for giving back to their communities, and Hyne is a prime example of this. As a major employer in the Tumbarumba region, Hyne works hard to improve the communities where its workers live through the Hyne Community Trust, which supports large community projects valued at over \$10,000 that benefit the region. Eligible community organisations are encouraged to consider how Hyne can support them to deliver lasting benefits to the Tumbarumba region in this year's round of grants.

An example of a recently successful project is the Tumbarumba Sports Academy and its Youth Precinct which is nearing completion.

Hyne Community Trust Chair, Kerrie Downes said the Youth Precinct will provide a safe and engaging recreational option for the youth of the region. "When we received the proposal for the Youth Precinct, it was a strong application as we knew there was a gap in our region's options for this age group," she said.

"The Hyne Community Trust provided funds for



the sports hall's mezzanine renovation as well as the installation of security cameras in both the sports hall and adjacent dance hall, while Hyne Timber supplied framing from the mill.

"The many local volunteers who have given their time on this project are further testament to the importance for our region's youth. It has been a significant community effort, and we congratulate all those who have been involved."

The Tumbarumba Sports



- 1/ Hyne donated the timber framing for the Youth Precinct as well as providing funds for the renovation.
- 2/ Adding a mezzanine area to the sports hall has significantly increased the space and available uses for local youth.
- 3/ The Youth Precinct is a comfortable area for kids – and parents – to relax during and after sports and social events.
- 4 & 5/ Local student Zane Goldspink, who boxes at the Sports Academy, was a keen volunteer on the project and has since been offered a carpentry apprenticeship.

All photos: courtesy Hyne

Academy is increasingly recognised as the local sports hub, with activities including boxing and martial arts that provide both mental and physical fitness as well as discipline and a social element. The Academy has a rapidly growing membership, with knowledgeable and experienced coaches, and well organised sessions.

The start of this month saw the installation of the carpets in the Youth Precinct meaning the space will be ready for use within weeks.

One of the most active volunteers has been 15-year-old Tumbarumba High School student and boxer Zane Goldspink. His contribution and experience as a volunteer on this project, inspired Zane to want to

become a carpenter. With his volunteer hours clearly demonstrating his work ethic and enthusiasm, Zane has recently been offered a carpentry apprenticeship with a local builder.

The Hyne Community Trust will open for applications on 1 June and close 30 June 2025.

Community groups considering applying for a Hyne Community Trust grant should start reviewing the 2025 guidelines available here: <https://www.hyne.com.au/about/community>

Projects must be valued over \$10,000 and demonstrate how they will provide lasting benefits for the community in order to meet the criteria.

The Hyne Community Trust was established in 2007 and has provided almost \$900,000 to the Tumbarumba region to date.

For more information, contact tumbatrust@hyne.com.au

Combilift's decade of training

LAST week saw a landmark celebration at Combilift's global headquarters in Monaghan, Ireland, marking the 10th anniversary of the highly successful OEM Engineering Traineeship – a collaborative initiative between Combilift and the Cavan and Monaghan Education and Training Board (CMETB). The event, which welcomed past graduates, current trainees and local educators, underscored the program's evolution from a local skills initiative to a cornerstone of regional industrial development.

Launched in 2015, the OEM Engineering Traineeship was born from a shared vision to tackle the skills gap in engineering and manufacturing with an industry-led approach. Today, with over 150 trainees having passed through its



Past graduates, trainers and Combilift staff were all part of the celebration. Image: courtesy Combilift

doors to achieve a QQI level 5 qualification, and with job placement rates above 80%, the program stands as a model for how industry and education can collaborate to mutual benefit.

As the primary industry partner, Combilift has not only provided cutting-edge workplace experience but also ensured the course content remains aligned with real-world demands. "We wanted to create more than just a training

program – we wanted to build a pathway into meaningful careers," said Combilift managing director Martin McVicar. "This traineeship has delivered exactly that, time and time again."

The nine-month programme blends 26 weeks of classroom-based learning with 12 weeks of hands-on work experience in Combilift. Over the years, the course content has evolved to reflect changes in the manufacturing landscape,

now including modules in Hydraulics, Lean Manufacturing and, more recently, Mathematics to prepare students for greater work or educational opportunities.

"It's about staying ahead of the curve," said Sinead McKenna of CMETB. "We've created a flexible, forward-looking course that equips learners with in-demand skills and supports local industry at the same time."

One of the most compelling aspects of the program is its accessibility. Fully funded through government and EU support, it removes financial barriers for participants and trainees are offered a €300 bursary per week during practical placements.

To watch a video celebrating the program, click [here](#).

arxada

IS IT SAFE TO USE
PRESERVATIVE - TREATED
WOOD FOR MY RAISED
GARDEN BED?

Yes!

TANALITH® E Copper Azole
treated timber is safe to use
around fruit and vegetables!



TRUST

Tanalised® Ecowood®

PROVEN WOOD PROTECTION

Tanalised, Tanalith, & Ecowood are
registered trademarks of Arxada © 2023

New Zealand benefits from timber grants

OneFortyOne's latest round of community grants helps kids and at-risk birds.

FORESTRY company OneFortyOne has announced the recipients of its latest round of New Zealand community grants, supporting four local organisations in the Marlborough, Nelson and Tasman regions.

The successful recipients are:

RICHMOND WAIMEA YOUTH TRUST (24-7 YOUTHWORK)

Awarded \$3000 to support youth workers at Waimea College and Waimea Intermediate Schools, who spend 10 hours per week helping young people build positive relationships and promoting individual and community wellbeing.

Lynda Rea, funding administrator said: "This grant will allow our youth workers to continue making a meaningful difference in the lives of students across both schools. Our relationship-based approach helps young people develop into healthy individuals who contribute positively to their communities. The support from OneFortyOne means we can maintain our presence where students need it most."

To learn more about 24/7 YouthWork, click here.

KĀREAREA FALCON TRUST, MARLBOROUGH

Awarded \$3000 to enhance health and safety measures at their falcon rescue and rehabilitation centre, which houses 18 kārearea (New Zealand falcons) and welcomes over 1000 visitors annually.

Tracey Currie, education and administration co-



1/ The youth workers are carefully screened and must be able to make regular, long-term commitments to supporting the students at the schools. Image: courtesy 24-7 YouthWork.

2/ Kārearea Falcon Trust is fighting to rebuild the species' population, which is down to about 5000-8000 birds. Image: courtesy of the Trust

3/ Bilingual modules at House of Science / Te Whare Pūtaiao include Forest Health / Te Ora o te Wao and many more. Image: courtesy of House of Science

4/ An injured ruru (morepork) cared for by NZ Wildlife Rehabilitation Charitable Trust. Image: courtesy of the Trust



education accessible to all schools in the region."

Click here for more about House of Science.

NEW ZEALAND WILDLIFE REHABILITATION CHARITABLE TRUST

Awarded \$2000 to purchase veterinary medical supplies and specialist food for the rehabilitation of injured and orphaned native wildlife.

Mel Willmott, trustee said: "As a new charity supporting wildlife rehabilitation in the Nelson region, this grant will directly benefit our native birds in need. Without a dedicated wildlife hospital in Nelson, wildlife rehabilitators provide this critical service from their homes, covering costs themselves. OneFortyOne's support means we can supply specialised food and veterinary supplies, ensuring more birds receive the best possible care before returning to the wild."

To learn more and donate to the Trust, click here.

OneFortyOne corporate affairs manager Kylie Reeves said the company was proud to support such diverse and impactful community initiatives: "Each of these organisations is making a significant contribution to our regions. We're pleased to be able to support their valuable work through our community grants program."

The next OneFortyOne NZ Community Grants Committee meeting will be held on 10 July 2025. Organisations interested in applying can do so at www.onefortyone.com/community/grants.

ordinator said: "The grant from OneFortyOne will significantly improve safety for our visitors, staff, and volunteers. As the only facility in the South Island directly boosting wild numbers of kārearea, ensuring we have proper emergency equipment like AEDs and fire extinguishers is essential. This support helps us continue our work protecting these threatened birds while providing safe, educational experiences."

To learn more about the Trust, click here.

HOUSE OF SCIENCE NZ CHARITABLE TRUST

Awarded \$3000 to provide

bilingual science resource kits to primary and intermediate schools in the Nelson/Tasman region.

Sandra Kirikiri, business development manager said: "This grant will allow us to create one additional science resource kit, expanding our library of hands-on science materials for local schools. With research showing children decide by age 10 what careers they're not likely to pursue, these resources give students early exposure to science principles. OneFortyOne's support helps us prepare young people for future STEM careers while making quality science

KOMATSU

Komatsu 931XC / 951XC



NEW Thinning & Clear Fall Harvesters from Komatsu Forest

The Komatsu 931XC & 951XC provide considerable advantages logging in steep terrain and soft ground. The compact eight-wheel design with high underlying tractive force and unique interaction between engine, control system and power transmission combine to provide;

- Great climbing ability & stability
- Excellent manoeuvrability
- Low ground pressure

KOMATSU
Creating value together

Komatsu Forest Pty Ltd.
11/4 Avenue of Americas
Newington NSW 2127 Australia
T: +61 2 9647 3600
E: info.au@komatsuforest.com

Boost for UK woodlands

New research is being funded to tackle pests and plant diseases.

THE UK Department for Environment, Food and Rural Affairs (Defra) has announced significant funding support aimed at boosting protection against pests and diseases in British woodlands and trees.

Plants and trees are estimated to contribute £4.1 billion per year to the UK's economy – their value in everything from delivering habitat to wildlife and pollinators to supporting tourism, even mitigating the impact of flooding for communities across the country.

However, the threat from pests and diseases is growing due to factors like climate change, and it is increasingly important to plant resilient trees that can withstand warmer temperatures so people and nature can enjoy the widespread benefits they bring.

The £4 million of funding supports 17 new research projects that will improve tree health and resilience through the Centre for Forest Protection – a collaboration between Forest Research and Royal Botanic Gardens, Kew – as part of the Government's Plan for Change.

These will include projects to facilitate future tree breeding for resilience to ash dieback, which has been estimated to kill over 100 million trees in the UK and projected to cost the economy up to £15 billion over the coming decades, and a fungal disease affecting Scots pine, and new technologies so trees can flower at a younger age to accelerate breeding programmes.

Professor Nicola Spence,



Signs of ash dieback, a fungal disease predicted to cost the UK economy £15 billion in coming years. Image: courtesy Defra

Defra's Chief Plant Health Officer, said, "Tackling the growing threat from plant pests and diseases due to climate change is critical to protect the long-term health and resilience of our trees.

"Expanding our research efforts and work to restore native ash trees are important steps in the fight against diseases which devastate our nations woodlands, protecting trees for the benefits they bring to our climate and for people's enjoyment."

Dr Louise Gathercole, Centre for Forest Protection coordinator, said, "At Forest Research and Royal Botanic Gardens, Kew, we are delighted to continue our collaboration under the Centre for Forest Protection.

"Funding this virtual centre gives us the opportunity to leverage the expertise and resources of both organisations, along with a wide range of other collaborators, to carry out innovative science and produce the evidence needed for future woodland resilience."

Projects for 2025/26 include:

- *Dodging the double whammy*, looking into whether trees resilient to ash dieback can also help avoid damage from Emerald Ash Borer, an exotic emerald coloured beetle from Asia which has caused significant damage to ash trees in North America.
- *Infusing resilience into the Scots pine genetic resource*, breeding pine trees resilience to Dothistroma needle blight, a fungal disease that can reduce timber yields and even cause tree death.
- *Developing novel methods to understand and mitigate grey squirrel bark stripping behaviour*, on the impact of invasive grey squirrels on woodlands – with an estimated economic cost

of £37 million annually – and how to combat bark stripping behaviour, which disincentivises tree planting and leaves trees susceptible to increased risk of disease.

As part of £700,000 of Defra-funded research, a second UK ash tree archive in Scotland has now been planted aimed at increasing resilience and

further developing efforts for a breeding programme of tolerant UK ash. This is a key step towards restoring native ash back to the British landscape.

Some 2500 young trees have now been planted over the one-hectare site. These trees have been specially selected as showing signs of potential resistance to the disease. Over the coming years, the less healthy individuals will be weeded out, allowing for the best trees to form a potential seed orchard for resistant ash seed production in future.

This follows over 3000 trees of tolerant ash being planted at the first ash archive site in southern England in 2019. Screening for tolerant trees in a different climate away from other threats will significantly boost research efforts. Identifying ash with a high tolerance to the disease will enable the development of orchards producing commercially available seed and prove transformative to our future landscapes.

“TACKLING THE GROWING THREAT FROM PLANT PESTS AND DISEASES DUE TO CLIMATE CHANGE IS CRITICAL

Sycamore Gap vandals found guilty

TWO men were last week found guilty of cutting down the famous Sycamore Gap tree in Northumberland, beside Hadrian's Wall. Adam Carruthers and Daniel Graham were found guilty of two counts each of criminal damage, for felling the tree and toppling it onto the historic wall.

The two men, close friends at the time of the crime, have since fallen out. Both pleaded not guilty in the case, saying they were at their homes in Cumbria. Graham told the court that Carruthers must have taken his phone and car while he was sleeping, and Carruthers's barrister said that it made no sense for the man to have been "gallivanting" around a national park days after the birth of his new baby, but the jury took only five hours to reach a guilty verdict.



The tree was a favourite with photographers and visitors to the area Photo: CC by Clementp.fr

The court was played video of the tree being cut down that was on Graham's phone and shown text and voice messages between the men boasting of their actions. A wedge of the trunk, removed as part of the felling process,

that was taken as a trophy was seen in video footage and a photograph of it in Graham's car boot was on his phone.

The men are awaiting sentencing and the crime has led to calls for trees of national significance in the

UK to have similar legal protections to buildings.

Northumberland Superintendent Kevin Waring, of Northumbria Police, said in a statement: "The Sycamore Gap tree was an iconic landmark – recognisable across the world – and which held a special place in the hearts of many.

"We often hear references made to mindless acts of vandalism – but that term has never been more relevant than

today in describing the actions of those individuals.

"At no point have the two men given an explanation for why they targeted the tree – and there never could be a justifiable one."

Job position to fill?

For as little as A\$10.00 per week, you can advertise your positions vacant on our dedicated eNews jobs web page.

Job ad: A\$30.00 for 3 weeks

Prices exclude GST.

[CLICK TO ADVERTISE](#)

timber
& FORESTRY *e*news

Contact Campbell McInnes at
campbellm@timberandforestrynews.com



Spreading the burden

Environmental toll of Melbourne's urban sprawl to be revealed at top international exhibition.

AT the same time as architects and building designers specialising in timber have been making a push towards middle-density living with multi-res and terrace proposals that represent significant economic and environmental efficiencies, many Australian developers and councils have continued their relentless push outwards into urban sprawl.

Now, the cost of that sprawl is being made clear in an exhibition by creatives from Monash University, who are the official representatives of Australia at the 24th Triennale Milano International Exhibition.

One of the world's leading art, design and architecture exhibitions, the Triennale Milano is taking place in Italy, from 13 May to 9 November 2025. The team from Monash Art, Design and Architecture (MADA) will present their Australia: Land Use Inequality exhibition to demonstrate how inefficient land use on the fringes of Melbourne is damaging habitats, ancient ecosystems, and culturally significant sites.

Representing Australia at the exhibition are Professor Louise Wright, Associate Professor Catherine Murphy and Professor Nigel Bertram from Monash Urban Lab at MADA, creatives Eugene Pereplechikov and Ziga Testen, and Mauro Baracco from Baracco+Wright Architects.

The team's exhibit will feature large-scale video works to show the environmental toll of Australia's urban footprint, where some of the largest houses in the world are found.

The videos will highlight three moments of this development pattern in Melbourne, such as in Beveridge to the north,

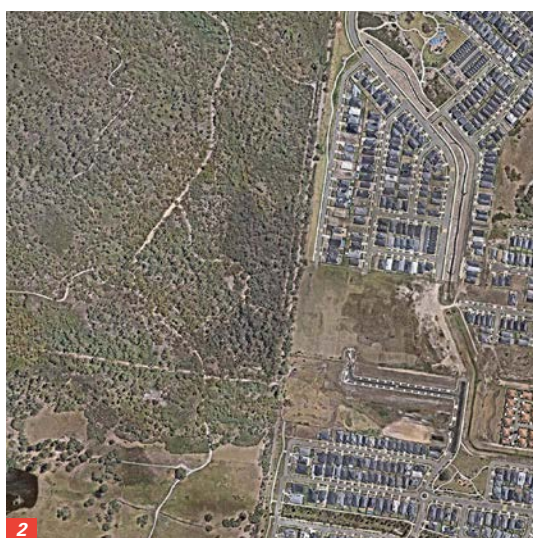
where housing construction scrapes the topsoil off the Volcanic Plains Grasslands, of which less than 1% remains.

In Cranbourne to the south-east, fences, vegetation removal, and the introduction of domestic animals accompanying new housing threaten the fragile wildlife corridor of the endangered Southern Brown Bandicoot.

Meanwhile, in Sunbury to the north-west, new housing estates are encroaching on First Nations' cultural landscapes, including ceremonial earthen 'Bora Rings'.

Professor Wright said Melbourne's urban sprawl has come at a great cost to habitat and biodiversity: "In recent years, a significant population increase, tax policies and inflation has led to a housing supply and affordability crisis in Melbourne. To address this crisis, large supplies of land continue to be rezoned on the city's edge for low-rise housing that can be delivered quickly.

"These lands hold ecological values essential for the life of vegetation, animals, birds and



1/ Monash experts Professor Louise Wright and Associate Professor Catherine Murphy (pictured) say Melbourne's urban sprawl has come at a great cost to habitat and biodiversity. Photo: Nigel Bertram, courtesy MADA

2/ Remnant bushland habitat of the endangered Southern Brown Bandicoot on the south-eastern edge of Melbourne fragmented by low-rise housing, 2025. Photo: Nearmap

3/ The home of a subterranean dwelling spider amongst the mossy crust, one of the first species to be displaced through the scraping of the crust for housing land use. Image: Still from video 'West' by Eugene Pereplechikov, courtesy MADA

insects endemic to Australia and some under threat of extinction. Yet despite the critical need to protect this non-human life, inefficient land use continues."

Associate Professor

Murphy said the aim of the exhibit is to raise awareness about Melbourne's land use patterns and advocate for greater equality between humans and other species.

"Australia is home to many unique, endemic species, and with that comes a global responsibility to protect them and ensure their survival," she said.

"We must align with international commitments that support reduced land clearing and greater respect for non-human life. We need to explore alternative housing models that prioritise urban greening and biodiversity."

Professor Bertram said the Monash Urban Lab focuses on research aimed at promoting equality in the urban environment, "Some of our research examines retrofitting and infilling housing to create a more compact city, one that can also make more space for natural ecosystems."

Held every three years, the Triennale Milano features a series of exhibitions, special projects and public programs, bringing together art, design, architecture, collectives, cultural institutions, museums and research institutes from around the world.

This year's theme, Inequalities, will explore the growing inequalities in cities and the contemporary world.

The future of forest certification

THE International Tropical Timber Organization (ITTO) took centre stage at last week's PEFC Forest Forum in Vietnam, where director of forest management Jennifer Conje delivered the keynote address and joined a panel discussion on the future of sustainable forestry. Held under the theme "Navigating Global Trade: How PEFC certification strengthens forests and business resilience," the forum convened diverse stakeholders from across the forest sector to explore how evolving global frameworks are reshaping certification systems, international trade and the long-term sustainability of forests.

In her keynote speech, Conje explored the sweeping geopolitical, environmental, and market forces redefining forest certification and forest-based businesses. From climate agreements and biodiversity frameworks to trade shocks and corporate sustainability requirements, she laid out how certification systems, like PEFC, can serve as critical tools for businesses and governments alike.

"As kryptonite is to Superman, uncertainty is to the business and trade environment," said Conje. "Some level of assurance and certainty is necessary for businesses (to operate). Assurance is essentially why certification systems like PEFC exist. The markets want assurance – in this case, of sustainability and legality."

Conje urged participants to see the current complex landscape as a challenge and an opportunity for innovation, investment, and resilience. She emphasised that businesses must increasingly anticipate

regulatory shifts and consumer expectations by adopting diversified, transparent, and sustainable sourcing practices.

In her address, Conje noted that the EU Deforestation Regulation (EUDR), Corporate Sustainability Reporting Directive (CSRD), and evolving biodiversity and climate requirements are part of a bigger movement – one that demands traceability, accountability, and, above all, integrity in how we manage and source from our forests.

Highlighting ITTO's role in supporting legal and sustainable tropical timber trade, she reiterated the Organization's long-standing support for independent third-party certification, while challenging the sector to reflect on how market and policy pressures impact certification standards.

"At what point does a certification standard wholly become defined by market demands," she asked, "versus remaining rooted in science, local context, and the principles of sustainable forest management?"

Conje also joined an all-female panel discussion titled 'Navigating the Evolving Policy Landscape: Risks, Rewards, and Responses', alongside speakers from the UN Food and Agriculture Organization (FAO), the Global Reporting Initiative (GRI) and the PEFC International Board. The session explored how global frameworks like the Paris Agreement, the Kunming-Montreal Global Biodiversity



ITTO Director of Forest Management Jennifer Conje speaks at the PEFC Forest Forum 2025 in Ho Chi Minh, Viet Nam. Image: Tetra Yanuariadi, courtesy ITTO

Framework and emerging ESG disclosure standards influence corporate strategies, forest policies, and rural livelihoods.

The panel examined how PEFC and similar standards adapt to meet growing climate action, biodiversity conservation, and social inclusion expectations. Panelists discussed the balancing act companies must perform to remain competitive and compliant while contributing positively to communities and ecosystems.

ITTO described the event as reaffirming its commitment to helping member countries and stakeholders navigate these changes.

"Whether it's biodiversity, climate, or sustainable livelihoods, third-party certification is more relevant than ever in some markets, to ensure market access and fair and just trade," ITTO executive director Sheam Satkuru said.

"We must continue to address the hard questions and formulate credible, implementable and cost-efficient solutions by refining our tools and enhancing engagement with all stakeholders so they serve both people and the planet," she added.

Source: ITTO



Timber & Forestry Enews is an authoritative and rapid deliverer of news and special features to the timber and forest-based industries in Australia, New Zealand and internationally. *Enews* is delivered weekly, every Thursday, 48 weeks of the year. Advertising rates are competitive with other industry publications. *Timber & Forestry Enews* hits your target market – every week, every Thursday!

HEAD OFFICE

Timber Media Australasia Pty Ltd
PO Box 3001
Maraylya NSW 2765

PUBLISHER

Timber Media Australasia Pty Ltd

EDITORS

Nicky Ainley
Donyale Harrison
Jess Hockridge
editors@timberandforestryenews.com

ADVERTISING

Campbell McInnes // +61 (0) 406 223 007
campbellm@timberandforestryenews.com

ACCOUNTS

Chris Parker // +61 (0) 413 710 203
cparker@ttnews.com.au

SUBSCRIBE

www.timberandforestryenews.com



The information contained in this publication has been obtained from sources assumed to be reliable. However, the publishers disclaim all warranties as to the accuracy, completeness, reliability or adequacy of the information displayed. Opinions expressed in Timber & Forestry enews are not necessarily those of directors or the Timber & Forestry enews team. We do not accept responsibility for any damage resulting from inaccuracies in editorial or advertising. The publishers are therefore indemnified against all actions, suits, claims or damages resulting from content in this publication.

CLASSIFIED ADVERTISING

EMPLOYMENT

LATEST JOBS:

- Plantation Assessment Officer
- Sandalwood Operations Officer

Click to apply

Click this link
to advertise
online...

ADVERTISING PACKAGES

PACKAGES:

Click this link
to learn about
advertising
packages...

PRODUCTS & SERVICES

BUY AND SELL -

New and Used
Machinery/Equipment

Click this link
to advertise
here & online...

ADVERTISING RATES

DISPLAY AD RATES

FULL PAGE: \$560

297mmH x 210 mmW

HALF PAGE: \$330

Vertical • 256mmH x 93mmW

Horizontal • 125mmH x 190mmW

THIRD PAGE: \$250

Horizontal • 73mmH x 190mmW

QUARTER PAGE: \$220

Vertical • 125mmH x 93mmW

Horizontal • 63mmH x 190mmW

BANNER ADVERTISING PACKAGES

• PREMIUM PACKAGE: \$195

FRONT PAGE publication module, email and website modules

◦ Front page module • 68mmW x 45mmH

◦ Top email banner • 1200pxW x 145pxH

◦ Home page website banner • 1000pxW x 120pxH

• STANDARD PACKAGE: \$135

PAGE 6 (or similar) module, email newsletter and website module

◦ Module • 93mmW x 63mmW

◦ Email module • 336pxW x 336pxH

◦ Website module • 720pxW x 744pxH

CLASSIFIED ADVERTISING

JOB / BUY & SELL ADS: ONLINE & IN PUBLICATION

720pxW x 744pxH - all ads to be in jpg format

TERM DISCOUNTS

12 WEEKS: 7.5%

24 WEEKS: 10%

48 WEEKS: 15%

All pricing is excluding GST and based on a weekly booking. Overseas bookings are exempt from GST. Banner advertising packages are a minimum 12 week booking.

DEADLINES

Display ads: Book by 9.00am Tuesday prior to publication.

Supplied artwork: 12noon Tuesday prior to publication.

Supply hi-res jpg or pdf to our specifications. This is a digital publication, therefore **NO crop marks or bleed is required.**

Classified advertising: JOB ADS ARE COMPLETED ONLINE.

Go to www.timberandforestrynews.com/post-a-job/ to place a job vacancy. **Book by 12noon Tuesday prior to publication.** Job ads are for individual positions. If more than one position is to be advertised, separate ads will need to be created and advertised accordingly.

BUY & SELL ADS ARE COMPLETED ONLINE. Go to www.timberandforestrynews.com/product/buy-sell-advertisement/ to place an ad. **Book by 12noon Tuesday prior to publication.**

PAYMENT TERMS

New clients invoiced on booking. Existing clients 14 days.

All other standard Terms & Conditions apply.

CONTACTS

Media releases and editorial:

Nicky Ainley // Donyale Harrison // Jessica Hockridge

e: editors@timberandforestrynews.com

Display ad bookings:

Campbell McInnes // e: campbellm@timberandforestrynews.com

Accounts:

Chris Parker // e: cparker@ttnews.com.au

Have some news to share?

Send media releases, news stories, events, any timber and forestry news related information with us anytime to Nicky, Donyale and Jess -

editors@timberandforestrynews.com

timber
& FORESTRY *e*news

Contact Nicky,
Donyale or Jess today...