

FOR OVER  
18 YEARS  
DELIVERED  
WEEKLY TO  
**15,200**  
GLOBAL  
READERS

Like and  
follow us on



ISSUE 830 // November 21 2024

# timber & FORESTRY *e*news

## **JOB:**

- Account Manager
- Business Development Manager

[Click to apply](#)



## Industry icons celebrated at awards night


COVER STORY P 4


**Do you  
have  
a job  
position  
to fill?**

[ADVERTISE TODAY](#)



**timber**  
& FORESTRY *e*news



 **BOOST  
YOUR  
CUSTOMER  
BASE**

CREATE A FREE SUPPLIER LISTING ON  
THE WOODSOLUTIONS WEBSITE

[GET STARTED](#)



**2024-25  
Community Grants  
Program now open  
Learn more.**

## ALL UNDER ONE ROOF

- IR SUPPORT
- TRAINING
- EMPLOYMENT
- WHS
- COMMUNITY



**NTHA**  
NATIONAL TIMBER &  
HARDWARE ASSOCIATION

1800 822 621



# Sustainable forest products and their important recycling role

THE renewable power of consumer goods made from sustainable Australian forest products should be celebrated for their key role in our recycling ecosystem, Chief Executive Officer of the Australian Forest Products Association (AFPA), Diana Hallam said during National Recycling Week.

National Recycling Week, which ran from November 11th to 17th, is a prominent Planet Ark campaign celebrated annually and aims to educate Australians about the importance of recycling and recycling correctly.

“The good news is that many of the products Australia’s forest industries create are recyclable. Everything from paper and cardboard packaging to tissue products, coffee cups and the repurposing

of softwood and hardwood timbers – the forest products sector’s contribution to recycling is enormous. Our products also store carbon which helps fight climate change,” Diana Hallam said.

“Consumer demands around the enhanced need for recycling is also driving innovation in our industry, for example with the evolution of compostable wood fibre coffee cups – reducing the need for such products to go to landfill.

“The effort of our local pulp and paper industries is huge in this area. They recycle more than 1.8 million tonnes of recovered paper and cardboard annually, using it to make new office paper, boxes, gift cards, tissue, paper towel and more.



**Many of the products Australia’s forest industries create are recyclable and should be celebrated during National Recycling Week.** Image: Shutterstock

“Paper products can be recycled many times over and when paper has reached the end of its useful life it can be composted, and its nutrients returned to the soil. In terms of recycling and reuse, we are the model industry for a circular economy.

“Our products also play the additional role providing

an alternative to non-renewable and other carbon-intensive products – from single-use plastics right through to building and construction products.

“Finally, timber and fibre processing facilities also recycle and reuse their residue products like sawdust, which is used to create renewable heat and power, reducing reliance on external energy sources.

“The forest products sector contributes a great deal to the national recycling ecosystem in a variety of ways. This National Recycling Week we celebrate that contribution as the nation and the world become more conscious about recycling importance,” Diana Hallam concluded.

“THE FOREST PRODUCTS SECTOR CONTRIBUTES A GREAT DEAL

**Preserve your Project, Preserve Timber**

**Choose a timber preservative with colour to set your project application apart.**

- Micronised pigment technology
- Enhances timber grain
- A combination of Micropro's attributes with the added benefit of long lasting colour

**www.kopperspc.com.au**  
1800 088 809

# “Think local” with Aussie made this festive season

AUSTRALIAN Made is urging consumers to 'think local' this festive season and purchase products carrying the iconic green and gold kangaroo.

New research from Roy Morgan reveals Australian retailers are set to receive an expected \$69.7 billion boost in sales in the six-week peak season leading up to Christmas - a 2.7% increase on last year's figures. The average shopper is forecasted to spend \$707 on gifts, up from \$646 in 2023.

Australian Made Chief Executive Ben Lazzaro said Christmas is an excellent opportunity for shoppers to show their support for local producers and prioritise Aussie purchases.

"It's important Australians



**Australians are being encouraged to look for the green and gold kangaroo and to purchase local this festive season.** Image Shutterstock

are conscious of their purchasing power this festive season. Australian-made products are not only made to some of the world's highest manufacturing and safety standards, but they

also have significant social, environmental, and ethical benefits," said Lazzaro.

"Every dollar spent on Australian Made goods has a direct impact on the makers and growers behind them."

Around 4,500 businesses are licenced to use the Australian-made logo, generating combined annual revenue of more than \$8 billion. Australia's manufacturing industry as a whole supports 900,000 local jobs.

Lazzaro said, "Products certified with the iconic Australian-made logo have gone through a rigorous compliance process. By looking for and purchasing products with the Australian Made logo, you can buy with confidence, knowing you are getting an authentic, locally made gift and supporting thousands of Australians throughout the supply chain."

Cont P 7



## Certify your products as Australian Made

Apply to use the logo at [australianmade.com.au](https://australianmade.com.au)





# Industry icons celebrated at Excellence Awards

FIVE new Hall of Fame Inductees, three Industry Champions and two Icons of forest contracting were celebrated at the recent Australian Forest Contracting Association Gala Dinner and Industry Excellence Awards.

120 people gathered at the event in Launceston to recognise the achievements and contributions of the people and businesses who epitomise what this great industry is all about.

Australian Forest Contractors Association General Manager Tim Lester said the overriding message from the evening was the importance of community and collaboration.

"Contracting businesses are the lifeblood of the forest products sector," Tim Lester said.

"They are very often multigenerational family enterprises, with dedicated staff, the highest levels of performance and a real commitment to maintaining healthy environments and communities.

"Through our Industry Excellence Awards, we are acknowledging and recognising this dedication and service which can be easily overlooked.

"We are also proud to recognise the outstanding contribution and resilience of this year's Hall of Fame Inductees who have been involved in the industry for 25 years and elevated two of our Hall of Fame members to Icon status.

"We awarded five Service to Industry Awards to individuals and organisations who have made a significant contribution

in support of forest contracting businesses.

"And with a special new category, we acknowledge the work of three Industry Champions, individuals who have gone above and beyond in support of our businesses and industry.

"Our congratulations to all the nominees and award winners," Mr Lester concluded.

## WINNERS AND FINALISTS

- **Next Generation Achiever**, awarded to a talented and successful emerging industry leader. Sponsored by the Forest Research Institute, University of the Sunshine Coast.

**Winner: Jacob Hughes**, JCH Harvest, (Tas)

- **Female Leader Award**, for outstanding achievement and contribution to the industry. Sponsored by John Deere

**Winner: Kirsty Parker**, M&M Timbers, NSW

- **Excellence in Safety**, awarded for outstanding achievement and contribution to the development and delivery of safe practices. Sponsored by Forico.

**Winner: Sunchip Group**, Queensland

- **Excellence in Operations**, awarded for outstanding achievement and excellence in operational and organisational performance. Sponsored by Waratah

**Winner: Francis Richardson**, Orana Enterprises, Tasmania.

- **Hall of Fame Inductees**. Sponsored by ForestFit™

**Andrew Westaway**, MWM Logging.

During the past 20 years Andrew has worked in various

Victorian locations in native forestry, salvage operations, bushfire responses, windblown pine, dangerous tree work, and fire salvage.

**Denis Greensill**, Greensill Bros.

Denis has been in the timber industry servicing both native hardwood and softwood operations for decades. He is a large employer in the region, and his nominator described him as an all-round legend of the industry.

**Angela McGuigan**, Sunchip Group.

Angela has been an integral part of Sunchip Group's success for more than two decades.

**Gerard Bennett**, TP Bennett & Sons.

Gerard has dedicated over 30 years to the forest industry, playing a pivotal role in supporting contracting businesses and ensuring the ongoing success of the sector.

**Tammy Price**, TP Bennett & Sons.

Tammy is a powerhouse of southern Tasmania, and has actively championed the cause of forest contractors for many years.

- **Service to Industry**.

Sponsored by Forestworks

**Graeme and Sylvia Elphinstone**, Elphinstone Engineering

Long-time supporters of the industry in Tasmania in nationally.

**Ken White**, Whites ATS

For the enormous amount of work to review, analyse and support the negotiation of the forest and fire services agreements in Victoria, supporting the harvesting contractors reaching a good outcome.

## Midway Limited

The commitment and dedication of multiple staff members has had a significantly positive impact on what is being achieved through the project for the benefit of industry.

**Peter Rutherford**, South East Timber Association (SETA)

Peter works as a volunteer to advocate for the timber industry in the South Eastern part of NSW.

**Dallas Frost**, Frost Batten Accountants.

An industry expert in assisting contractors together advocating for industry with a number of state government bodies.

- **Industry Champions**.

Sponsored by JASANZ

**Simon Shackleton**, John Deere

Simon has been the General Manager Sales & Marketing John Deere Forestry (Asia-Pacific & Africa) since early 2000's and prior to this was in a similar role with timberjack. Simon has been a strong supporter of AFCA since the original meetings to form the association in 2002.

**Dwayne Kerrison**, Orana Enterprise.

Dwayne has been General Manager of Orana Enterprises since 2016. Orana Enterprises is a family owned local business specialising in timber harvest and haulage for customers and landowners in the Tasmanian forest industry.

**Mike Jones**, Komatsu Forest.

Mike was the Managing Director for Komatsu Forest for almost 30 years. He's been involved in the industry for 40 years and is a worthy recipient of this award.



1



2



3



4



5



6

From P 4

#### • Industry Icons.

Sponsored by Sustainable Timber Tasmania.

**Les Walkden**, Les Walkden Enterprises

For more than 40 years, Les has been an innovator and long-term industry contractor in Tasmania. Les has handled freight forwarding, carted coal, hauled vegetables, oil and fuel, and of course – timber.



7

**Max Jones**, Seamax Group.

Max is an industry icon for many reasons. He started in the industry at the age of 14 and is still running the daily



8

operations of his log haulage business at the age of 72. Max also has contributed to the industry in Tasmania by being on the board of the old TLA and Timber community's

when these organizations were running.

1/ Jacob Hughes.  
2/ Angela McGuigan and Mark Blackberry.  
3/ Dwayne Kerrison.  
4/ Simon Shackleton.  
5/ Tammy Price (left).  
6/ Gerard Bennett.  
7/ Les Walkden and Max Jones.  
8/ Mark Blackberry and Jana from Sunchip Group. All images: courtesy AFCA

**On the cover: AFCA board members celebrate with some industry icons.** Photo: courtesy AFCA

## 2024-25 Community Grants Program applications are now open

Find out more online.



[responsiblewood.org.au](https://responsiblewood.org.au)

Responsible Wood  
RW/1-10-1





# Queensland BPIC announcement a positive for home building

THE HIA says to have any hope of delivering the number of new homes desperately needed in Queensland to address not only the current housing shortage but demand into the future, we need all sectors of the home building industry to be firing.

"The negative impact of the former government's Best Practice Industry Conditions (BPICs) policy on the ability of the industry to deliver high-rise residential towers has been dramatic," said HIA Executive Director Queensland, Michael Roberts.

"If we want to build more homes in Queensland quickly, and especially more residential towers, productivity within the industry must improve.



**The HIA has previously argued against the BPICs stating it drags productivity. They have welcomed the new governments quick action and change.**  
Image Shutterstock

"HIA welcomes today's announcement of an immediate pause on the industrial relations provisions

of Best Practice Industry Conditions.

"HIA has argued on behalf of members for some time that

provisions contained in BPICs are a drag on productivity in the building industry, and are contributing to higher costs, longer construction timelines and lower supply of much-needed new homes, especially in the development of unit towers.

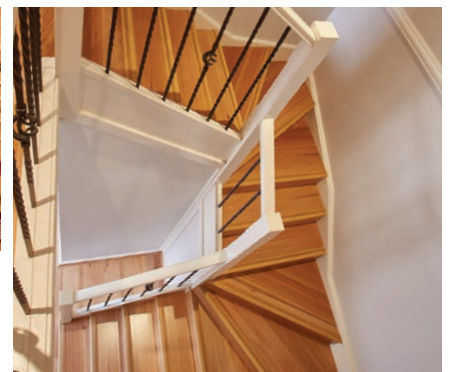
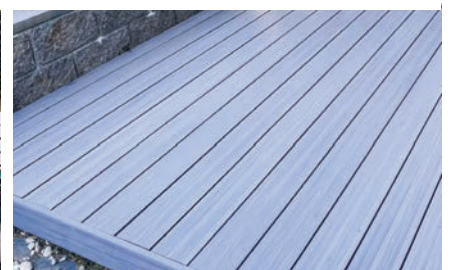
"We have asked and lobbied for a curbing or abolition of BPICs in our published election priorities, and any moves in this direction will be welcomed in the home building industry," Mr Roberts said.

"We note that the announced pause will not apply to existing contracts, or to workplace safety or apprentice training provisions, ensuring

Cont P 7



**Premium Manufacturer and Distributor of High Quality Timber and Building Products**



**www.auswood.com.au**  
**P 1800 888 986**  
**E info@auswood.com.au**



## NOVEMBER

### 27: Forest and Wood Communities Australia AGM – ONLINE @6.00pm (ADST).

Zoom link: <https://us04web.zoom.us/j/74211633031?pwd=IOaUOnoiwt9zWkmkPN50cbG50aEZWU.1>

Meeting ID: 742 1163 3031

Passcode: 2xL1eu

## DECEMBER

### 6: WFTN Quarterly Breakfast – The Smug Fig, Stones Corner, Brisbane, 8.00am.

For more details and to RSVP by 4 December, contact Tahlia at [events@ntha.com.au](mailto:events@ntha.com.au)

## SAVE THE DATES 2025

### FEBRUARY 13: DANA

The Future of Australian Eucalyptus Plantations and

### of Australian log exports to China and India Seminar – Jasper Hotel, Melbourne.

Visit <https://www.danaevents.co.nz/2025melbourne/home> for more information. Contact [admin@dana.co.nz](mailto:admin@dana.co.nz)

**MARCH 22: NTHA QLD State Awards – Brisbane City Hall, Brisbane.** Join us in celebrating the QLD Timber and Hardware Industry. Contact Tahlia at [events@ntha.com.au](mailto:events@ntha.com.au)

**MAY 30: NTHA SA/NT/WA State Awards – National Wine Centre, Adelaide.** Join us in celebrating the SA, NT & WA Timber and Hardware Industry. Contact Tahlia at [events@ntha.com.au](mailto:events@ntha.com.au)

**MARCH 25-28: DANA Global Wood Products Supply and**

**Demand Trends Seminar, Global Forest Investment Conference, and WWII Battle of the Bulge Battle sites tour – Europe.** Contact [admin@dana.co.nz](mailto:admin@dana.co.nz)

**MAY 7-8: Sydney Build 25 – ICC, Sydney.** Australia's largest construction and design show. Enews is a media partner for Sydney Build 2025. For more details visit <https://www.sydnebuildexpo.com>

**MAY 26-30: LIGNA 25 – Hannover, Germany.** The world's leading trade fair for woodworking and wood processing plant, machinery and tools. For more details visit <https://www.ligna.de/en/for-visitors>

**JUNE 22-26: World Conference**

**on Timber Engineering – Brisbane.** WCTE is the world's leading scientific forum for the presentation of the latest technical and architectural solutions and innovations in timber construction.

**OCTOBER 20-22: International Woodchip and Biomass Seminar and Networking Event – Singapore.**

**OCTOBER 22-23: Melbourne Build 25 – MCEC, Melbourne.** Victoria's largest construction and design show. For more details visit <https://melbournebuildexpo.com>

**OCTOBER 23-24: Field Trip – Vietnam.**

From P 6

continuity and certainty where it's needed.

"The speed with which the new government has acted to announce changes is an indication of the urgency

attached to increasing supply of new homes.

"Our latest numbers released this week show home construction commencements are on the increase in Queensland, and

we project ongoing increases over the next five years, but it is the apartment sector and in particular the high-rise apartment sector that is underperforming. We simply must build more.

"We are very keen to see further increased productivity contributing more to industry growth, and to building the new homes that Queensland needs to address the housing crisis over the coming decade," Mr Roberts said.

From P 3 [Aust Made]

Sarah Munnings, a local Victorian jewellery maker and owner of Sarah Munnings Jewellery, agreed shoppers shouldn't underestimate the impact buying locally has.

"Every purchase from a local manufacturing business has a positive impact on at

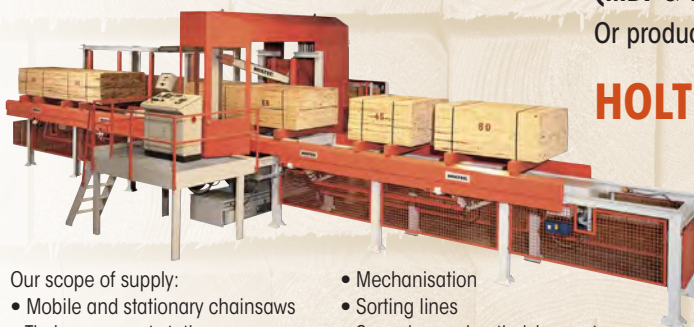
least six other Australian businesses. At Sarah Munnings Jewellery, we purchase all of our materials from Australian suppliers and use local businesses for things like branding, website design, photography and events," said Munnings.

"Christmas is our key trade

season, and we and many other local makers rely on it to keep the doors open year-round. It's been a tough year, and unfortunately, many businesses are struggling. Every time an Australian business closes, we lose the skills and experience involved with manufacturing those items.

"When you shop for products with the Australian Made logo, you are making a conscious decision to help keep trades alive, and honestly, every single order is celebrated. To us, customers are more than numbers on a spreadsheet."

## A CUT ABOVE...



Our scope of supply:

- Mobile and stationary chainsaws
- Timber crosscut stations
- Log cutting stations
- Circular saws

- Mechanisation
- Sorting lines
- Scanning and optimising systems
- Special systems

Do you crosscut timber packs at  $\pm 1$ mm accuracy?

Or cut structural timber, panel products (MDF & LVL), paper rolls?

Or produce pallet dimensions or studs on fixed lengths?

## HOLTEC has a solution for you!

For more information contact:



Ph: +64 9 416 8294 // Fax: +64 9 416 8296

Email: [sales@holtec.org](mailto:sales@holtec.org) // Web: [www.holtec.org](http://www.holtec.org)



# Peter Crowe retires after 65 years in forest industries

AFTER a remarkable 6-plus decades of dedication to Australia's forest industries, Peter Crowe OAM, is retiring from his last official position as Chair of the Softwoods Working Group (SWG).

"Peter's unwavering commitment and invaluable contributions have been instrumental in shaping the future of the softwoods industry in Australia," SWG Executive Officer Carlie Porteous said.

"Peter's journey with the SWG began in 1987, and over the decades, he has played a pivotal role in advancing sustainable forestry practices, fostering industry collaboration, and advocating for innovation.

"His knowledge, leadership,



Retiring SWG Chair Peter Crowe. Photo supplied

and vision have left an indelible mark on the industry, earning him the respect and admiration of colleagues and stakeholders.

"Peter has been a driving force behind numerous

initiatives that have strengthened the softwoods sector. His efforts have enhanced the industry's economic viability and helped ensure its environmental sustainability for future

generations, including the commitment to good fire management practices, weed management and tree breeding.

"He started work in the forest industries in 1959 when he joined the NSW Forestry Commission, where he worked in various positions until 2006. Since then, he has worked as an industry consultant and advocate, championing many advancements in the timber industry including plant breeding initiatives, which have improved the quality of timber grown in plantations."

Mr Crowe said he could enter so many older plantations and remember when the first trees were

Cont P 9

## Job position to fill?

*For as little as A\$10.00 per week, you can advertise your positions vacant on our dedicated eNews jobs web page.*

*Job ad: A\$30.00 for 3 weeks*

*Prices exclude GST.*

[CLICK TO ADVERTISE](#)

**timber**  
& FORESTRY *e*news

Contact Campbell McInnes at  
campbellm@timberandforestrynews.com



Image: Freepik



# AFPA calls for review of INFM method

THE Australian Forest Products Association (AFPA) is urging the Federal Government to withdraw support for the NSW Government's proposed Improved Native Forest Management in Multiple-use Public Forests (INFM) method.

Chief Executive of the AFPA Diana Hallam said the proposed method clearly fails to meet integrity standards.

"There are serious questions over the validity and integrity of the INFM method proposed by the NSW Department of Climate Change, Energy, the Environment and Water (NSW DCCEEW). The ACCU Scheme should not be hijacked to fund government projects at the cost of realising genuine carbon abatement," Diana Hallam said.

"We are calling on the Federal Minister for Climate Change and Energy, Chris Bowen to ask the Emissions Reduction Assurance Committee (ERAC) to review how the INFM method satisfies integrity standards, including additionality, scale of abatement and adverse environmental and economic impacts."

Diana Hallam said the proposed INFM method has expanded to include Tasmania and Queensland.

"The proposed INFM method requires a national



**The AFPA is urging the Federal Government to withdraw support of the Improved Native Forest Management in Multiple-use Public Forests (INFM) method saying it is not compatible.** Image: Shutterstock

cessation of native forestry operations and is not compatible with government commitments to support our sustainable native forestry industry.

"If a carbon method incentivising the cessation of native forestry operations is rejected by states practising sustainable native forestry, as expected, it risks undermining the integrity of the carbon abatement scheme as a whole."

AFPA was extremely surprised to see the INFM method recommended for further development at the expense of Forestry Australia's Enhancing Native Forest Resilience method, which was developed by forest scientists, focuses on improved forest health through active forest management and was

assessed by the ERAC as having 'excellent alignment with Offsets Integrity Standards'. In contrast, the INFM method, developed by consultants, was only assessed with 'potential' to meet the same standards.

There is an increasing body of evidence that shows forests managed for production provide the greatest ongoing greenhouse gas benefits. In other words, the carbon benefits accruing from forests that are harvested and managed are greater than forests that are conserved or locked up

**"A CESSATION IS NOT COMPATIBLE WITH SUSTAINABILITY OF THE INDUSTRY"**

because growing trees sequester carbon at a greater rate than mature ones, and harvested timber continues to store carbon long after it has been removed from the forest.

AFPA represents forest growers, harvesters, and manufacturers of timber and paper products.

"Carbon methods with strong integrity are needed to ensure active

forest management reaches its climate change fighting potential for Australia and the world," Diana Hallam said.

"I urge the Federal Government to scrutinise ERAC's decision-making processes and reverse its decision to develop the INFM method. Australia's abatement ambitions can be realised if we understand and accept the science that managed native forests support the climate, communities and the economy.

"The Intergovernmental Panel on Climate Change (IPCC) has acknowledged this science. That ERAC has not, suggested Australia's abatement ambitions are being sacrificed in the pursuit of ideology or politics," Diana Hallam concluded.

From P 8

planted and in numerous cases, he helped plant them.

"I am extremely proud of working in such a vibrant renewable industry alongside so many fantastic, committed individuals who have

recognised the importance of forestry and its contribution to the development of regional Australia," he said.

Ms Porteous said as the industry celebrates Mr Crowe's retirement, it is a time to reflect on his remarkable achievements and the legacy

he leaves behind.

"His passion for forestry, dedication to excellence, and unwavering commitment to the industry's growth will continue to inspire us all," she said.

"The SWG extends its

heartfelt gratitude to Peter for his exceptional service and wishes him all the best in his well-deserved retirement.

"We look forward to continuing the work he has championed and building on the strong foundation he has established."

# ATIF Members commit to battling illegally logged imports

IN a world rife with counterfeit or illicit goods, ATIF members are facing one of the toughest battles to comply with some of the world's strictest legislation aimed at combating the trade in illegally logged timber, and they are doing so unapologetically.

"It is a key part of the ATIF Code of Ethics that members not only refrain from dealing with illegally logged timber but also avoid trading in conflict timber—material that may still be legally imported but is subject to heavy tariffs, such as timber sourced from Russia," said General Manager Natalie Reynolds.

"Any member found in violation of the Code of Ethics risks their membership in the leading association for timber importers."

Australia has not adequately invested in planting enough plantation resources to meet the domestic demand for timber. On top of this, insufficient investment in local manufacturing limits our ability to produce many of the timber products we currently import. To reduce inflation and meet the housing needs of the nation, the reality is that we must rely on imports. Simply urging consumers to "buy Australian" isn't enough—many members of the Australian Timber Importers Federation (ATIF) are also the largest domestic timber suppliers, and for that resource to be used, it must first exist.



**Australia has not adequately invested in planting enough plantation resources to meet the domestic demand for timber ATIF says as its members commit to battling the ongoing illegal logging import risk.**

Image: samjbasch/istock

"The same regulations apply to domestically processed logs as to imports, and illegal logging is not only an international issue but also occurs in developed countries, including here," said Ms Reynolds.

Merely reopening forests closed by State Governments is not a sufficient solution.

These forests do not contain the structural timber needed for house frames, and, moreover, we lack the manufacturing capacity to meet the demand.

To import timber for Australia's homebuilders, importers are required to perform due diligence and obtain documentation verifying the timber's source. Under recent legislation, they must also ensure the authenticity of the documentation provided. However, this can be nearly impossible when the

documents are in a foreign language and refer to legal systems abroad.

Despite these challenges, ATIF's importer members do not complain—they make every effort to comply.

"No system designed to prevent organised crime can be effective if enforcement is limited to the point of import. It requires a coordinated, international effort at every stage of the supply chain to truly eradicate it. If addressing organised crime at the import level alone were enough, we would have already eradicated the global drug trade," Ms Reynolds continued.

Country of origin labelling is also not practically possible. Using the example of the type of board used in every kitchen, there are often fibres in those boards from many different sources. So there will not be a single country of origin.

"Australian plantation forest fibre is sent to Asia to be converted into paper and then affixed to a composite board made up of many different fibres and imported again.

This illustrates the country of origin labelling problem to a tee," Ms Reynolds said.

Ms Reynolds has called for greater multinational collaboration, particularly with manufacturing countries that produce highly refined composite products, where illegally logged fibre can sometimes be hidden—often without the knowledge of well-

intentioned importers. ATIF is urging government intervention in these countries and the establishment of a task force to eliminate the practice of "switching out" fiber during the production of composite or refined products.

This call is in addition to ATIF's longstanding requests for government action, particularly from Border Force, to monitor and intercept structural timber that fails to meet Australian standards. Such timber can lead to structural collapses, causing serious injuries, fatalities, and significant costs to repair.

"Non-compliant timber creates unfair competition for domestically produced and compliant imported products, and it poses a serious risk to public safety. Members of the building industry should only purchase from ATIF members—who are committed to ensuring the quality, source, and performance of their products," Ms. Reynolds stated.

"The last thing ATIF

**“ GREATER MULTINATIONAL COLLABORATION IS REQUIRED ”**

Cont P 11



From P 10

members need is timber of questionable origin and quality being dumped onto the Australian market, competing with their legitimate imports or domestically resold products."

It is for this reason at the ATIF AGM held on Monday 11th November, members re-affirmed their commitment to the Code of Ethics and

spent the entire afternoon in an education session learning about timber testing techniques and how to identify fraudulent documents in accordance with internationally accepted mechanisms. They also have the guide to the Australian Standards as a ready reference and are providing it whenever possible to customers.

"ATIF has also submitted

recommendations to the government to help improve the regulations, ensuring they are practical and enforceable. We've even offered to pilot the regulations in real-world scenarios before they are finalised, to ensure their effectiveness," Ms. Reynolds said.

"With similar legislative changes happening in the EU and other countries worldwide,

reducing the risk of illegally logged timber entering the Australian market will help eliminate the market for this global crime. By doing so, we can ensure that timber—one of the most renewable building resources, which also stores carbon—remains a sustainable option, delivering superior environmental outcomes compared to alternative materials," she added.

## Shift towards faster housing approvals for NSW

THE NSW Premier has announced the establishment of a new state-led approval pathway for major residential housing projects, effectively bypassing local councils for major projects.

Commencing in 2025 new housing developments above an estimated \$60 million (around 100 or more homes) in Greater Sydney and \$30 million (around 40 or more

homes) in regional NSW will be able to apply for development approval directly from the Minister via the new Housing Delivery Authority (HDA) which will also be able to approve spot rezonings.

Earlier this week the Premier highlighted how complex the NSW Planning system is, calling it a 'game of snakes and ladders' and vowed to make a sweeping overhaul of the

planning system.

"This announcement is a welcomed signal that the Premier is prepared to shift more approvals away from slow local councils and to by-pass some of the red tape stopping us getting shovels in the ground to build new homes" said Brad Armitage, HIA Acting Executive Director NSW.

Earlier this year HIA released

a planning scorecard, and NSW rated just 1.5/5 signalling the most underperforming planning system in the country.

The announcement is a step in the right direction, but more can be done to remove the blockages that stop families from getting into a home including; detached homes and low and mid-rise developments.

Source HIA

# arxada

IS IT SAFE TO USE  
PRESERVATIVE - TREATED  
WOOD FOR MY RAISED  
GARDEN BED?

## Yes!

TANALITH® E Copper Azole  
treated timber is safe to use  
around fruit and vegetables!



# TRUST

## Tanalised® Ecowood®

### PROVEN WOOD PROTECTION

Tanalised, Tanalith, & Ecowood are  
registered trademarks of Arxada @ 2023



# Business Grants

*Access state and/or federal funding to grow your business!*

Enews has partnered with a professional grant writing business. Watch this space as not all grants are made public. We will publish grants for various states/

territories for our industry here in Enews. Our connection might be available to assist you with eligibility criteria, grant writing, application process and

lodgement. They have a high success rate, so contact us if you would like to make an appointment. Contact: [editors@timberandforestrynews.com](mailto:editors@timberandforestrynews.com)

## Manufacturing Energy Efficiency Grant Program

THE Queensland Department of Regional Development, Manufacturing and Water's Manufacturing Energy Efficiency Grant is now open for applicants with between \$7,500 - \$50,000 available to successful applicants.

This Grant is designed to assist Queensland-based manufacturers to improve energy efficiency measures and technology, reduce energy usage, costs and emissions.

The MEEG Program will support eligible Queensland-based manufacturing SMEs by reimbursing up to 100 per cent of Eligible Project costs for lighting projects and/or up to 75 per cent of Eligible Project costs for other eligible projects undertaken by an SME manufacturer.

Grants of between \$7,500 to \$50,000 (excluding GST) will be:

- Available for projects that align with the sustainability goals of the applicant and the MEEG Program Objectives
- Available for projects that



**Applications for the Queensland Energy Efficiency Grant are now open.** Image: Unsplash

support manufacturers in implementing energy efficiency measures to reduce energy costs and operational emissions through the adoption of energy efficiency technologies, equipment, systems or processes

- Awarded following a demand-driven process. The process involves an applicant submitting a completed application form. If the submitted application demonstrates that the applicant and the project satisfactorily meet all eligibility and assessment criteria, grants will be awarded to those applicants with the earliest submission date of a complete and proper application, where

funding remains available to be allocated.

The objectives of the MEEG Program (Program Objectives) are to support the Queensland Government's Energy and Jobs Plan and the department's strategic direction by:

- Increasing the uptake of energy efficiency measures and technology by Queensland-based manufacturing SMEs
- Supporting Queensland-based manufacturing SMEs to reduce energy usage and costs
- Enabling carbon emissions reduction in support of the Queensland Government's commitment to net-zero by 2050, as well as

Queensland's renewable energy and climate targets

- Increasing awareness of energy use by manufacturers.

To be eligible for the MEEG Program, an applicant must:

- Be a Queensland-based business whose principal activity and majority annual turnover is derived from manufacturing, as defined under Division C of the Australian Bureau of Statistics Australian and New Zealand Standard Industrial Classification (ANZSIC), 2006
- Be registered for GST and hold an active Australian Business Number (ABN)
- Be an SME with between five and 200 full-time equivalent (FTE) employees. A minimum of five FTE employees must be located in Queensland.

Submitted applications will be assessed as they are received. Applications will close on 30 June 2025 or when all funding for this round is allocated.

Applications must be correctly completed and submitted. Enews highly recommends an appointment with a professional grant writer to achieve a successful outcome.



## Komatsu 931XC / 951XC



### NEW Thinning & Clear Fall Harvesters from Komatsu Forest

The Komatsu 931XC & 951XC provide considerable advantages logging in steep terrain and soft ground. The compact eight-wheel design with high underlying tractive force and unique interaction between engine, control system and power transmission combine to provide;

- Great climbing ability & stability
- Excellent manoeuvrability
- Low ground pressure



# Forest scenery celebrated by students in OneFortyOne photo competition

ONEFORTYONE'S 2024 Forest Photo Competition winners have been selected.

This year's competition saw an impressive array of over 120 entries from students across the Limestone Coast and Western Victoria, showcasing their perspectives on our iconic landscape.

Entries were brought to a panel of judges, and top honours were given to Year 6 student Hunter Crowe, and Year 12 student Ellie Cookson.

OneFortyOne CEO Wendy Norris expressed her admiration for the students' work.

"The perspectives shared by these young photographers are truly inspiring," Wendy said.

**“THE PERSPECTIVES ARE TRULY INSPIRING**

"The enthusiasm and creativity shown highlight the strong connection our community has with local forests."

Launched in August to celebrate National Forestry Day, the competition was designed to encourage students to explore and share their unique perspectives about what



**Year 6 student Hunter Crowe of Glencoe Central Primary School, one of the competitors who received top honours at this year's OneFortyOne photo competition.** Photo: courtesy OneFortyOne

the forest means to them.

Ellie captured the essence of local forests with her stunning photograph and heartfelt words about the surprises and unique sights

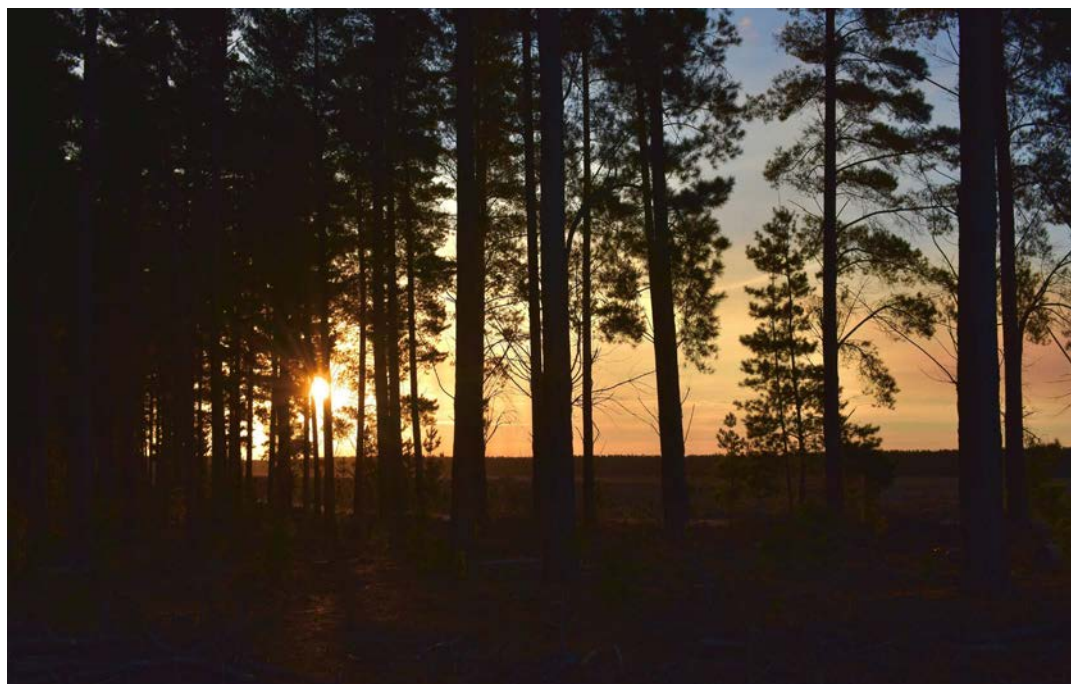
in the forests she calls home, while Hunter's winning entry beautifully depicted his love for nature and the joy he finds in exploring the bush with his family.

"Their ability to capture the beauty and resilience of our forests emphasises the importance of thoughtful stewardship of the forest for generations to come," Wendy said.

"We are incredibly impressed and thankful to all of the students for their contributions to this celebration of nature."

The winning photos will be featured on OneFortyOne's social media

channels and website, and a selection of entries will be displayed at a number of exhibitions in the region.



**Year 12 student Ellie Cookson from Grant High School, one of the competitors who received top honours at this year's OneFortyOne photo competition.** Photo: courtesy OneFortyOne





**Year 11 student Madeline Tumminello of Open Access College.**  
Photo: courtesy OneFortyOne



**Year 4 student Evelyn Simon from Mil Lel Primary School.** Photo: courtesy OneFortyOne

## WFTN host final event for 2024 and Christmas Drive

THE WFTN quarterly breakfast is returning for the last time for 2024, hosting their final event for the year on December 6 from 8.00 am.

The event will be held at the Smug Fig, Stones Corner and is a wonderful opportunity to connect and celebrate the season with peers from across the industry.

As part of our festivities, WFTN are hosting a Christmas Drive in support of RizeUp's mission. Attendees are encouraged to bring along a gift for teens aged 14-17. Suggested gifts include:

- Bath product packs
- Gift vouchers
- Books, board games, or

You're invited to



# Quarterly Breakfast

**Friday, December 6th 2024 | 8am**

**The Smug Fig**  
7 Jeavons Ln, Stones Corner QLD 4120

**RSVP by 4th December to**  
tahlia@ntha.com.au

Annual Partner



Breakfast Sponsor



sports items (AFL balls, cricket sets, Lego, etc.)



- Nail polish or teen makeup kits

- Art and craft supplies

Please ensure the gift is unwrapped.

If you're unable to attend the breakfast, Wesbeam and Dindas have kindly offered to be drop off locations, so you can still contribute to the drive and make a difference this season.

"We look forward to celebrating with you and making this festive season brighter for those in need. Thank you for your continued support and see you there," Tahlia Bellotti said.

The event is thanks to WFTN's annual partner, Woodhouse & Breakfast Sponsor, Finlayson's Timber & Hardware.

Please RSVP by December 4 to tahlia@ntha.com.au

# New standard for exterior timber cladding

TO support the use of timber in construction, Forest & Wood Products Australia (FWPA) is introducing a new industry standard aimed at streamlining compliance for exterior timber wall cladding.

The current complex regulatory landscape often leads to increased time and costs for projects, making timber a less attractive option for builders and designers.

The proposed FWPA Standard introduces a non-mandatory Deemed-to-Satisfy (DTS) solution specifically for exterior timber wall cladding systems. This innovative Standard provides a clear compliance pathway for meeting the condensation and weatherproofing provisions of the National Construction Code (NCC).

“By simplifying compliance requirements, we’re not only reducing costs and project delays but also empowering builders and designers to choose timber as a preferred material,” said Boris Iskra, National Codes and Standards Manager at FWPA.

For commercial projects under NCC Volume One, this standard provides the first-ever compliant DTS solution, significantly reducing

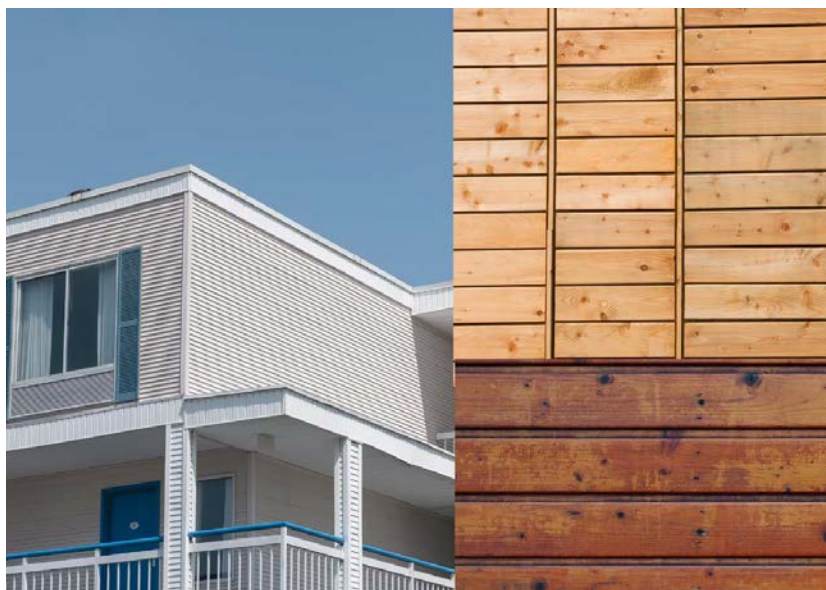
reliance on costly customised Performance Solutions where external timber cladding is permitted to be used. For residential projects under Volume Two, it accommodates modern cladding systems and updated installation methods, further streamlining the compliance process.

This new standard aims to minimise project delays, reduce construction costs, and promote the broader adoption of timber as a sustainable material, enhancing its appeal and opening new market opportunities.

FWPA is committed to industry-wide engagement in developing this standard. Consultations are being held with timber cladding manufacturers, suppliers, distributors, and building associations.

To achieve NCC recognition, the standard is being developed in alignment with the Australian Building Codes Board’s Protocol for the Development of National Construction Code

Referenced Documents.  
An open public comment



***This new standard aims to minimise project delays, reduce construction costs, and promote the broader adoption of timber as a sustainable material, enhancing its appeal and opening new market opportunities.*** Image: Shutterstock

period from November 13, 2024, to February 7, 2025, invites industry members to provide feedback and help shape the standard.

## KEY BENEFITS OF THE NEW FWPA STANDARD

If referenced in the NCC, the new Standard will deliver several benefits to industry stakeholders:

- **Streamlined Compliance:** Architects, building designers, and builders will gain a straightforward pathway to meet NCC requirements, reducing the complexities of compliance navigation.
- **Cost Savings:** Detailed design and installation guidelines will aid building surveyors and certifiers in minimising the need

for costly Performance Solutions, especially beneficial for commercial projects and minor residential variations.

FWPA aims to improve the competitiveness and sustainability of the Australian forest and wood products industry through innovation by investing in effective and relevant R&D and promotion of the industry’s products, services and values. FWPA undertakes industry-level activities where a collective approach delivers more effective and valuable commercial outcomes than individual action. We deliver services that support the industry’s capacity as a major exporter and mainstay of regional communities in many parts of Australia.

“EMPOWERING BUILDERS AND DESIGNERS TO CHOOSE TIMBER”



## Are you following us on social media?

Please like and share our page so we can get the timber and forestry message out to a bigger audience. If you like our publication, please leave us a review.





# Timber features in winner of Newcastle Architecture Awards

TIMBER is a prominent feature of this year's winner of the Australian Institute of Architects 2025 Newcastle Architecture Awards in NSW.

The awards and commendations honour Newcastle's best new residential and commercial buildings, shining

a light on the most innovative, sustainable, and inspirational homes, commercial and community buildings.

This year's winners can be seen as a window into the changing built environment of Newcastle, and a spotlight on the imperative role of architecture in shaping the future of one of the state's most prominent regional hubs.

With a particular focus on sustainability and community, the jury recognised innovative residential projects, and impressive commercial and public buildings that are designed to serve Newcastle and its residents.

"Serving as Jurors for the 2025 Newcastle Awards offered us as jurors an incredible opportunity to witness firsthand the exceptional projects defining the architectural landscape of the Newcastle region." Jury Chair Sarah Lawlor, Government Architect NSW, said.

"By immersing ourselves in these spaces, we were able to fully understand each project, and the obvious dedication of each practice to crafting environments that enhance the lives of their communities."



**2025 Newcastle division medal winner, New Castle, Anthony St John Parsons - Awabakal Country.** Photo: Benjamin Hoskings

"Each project showcased a profound commitment to the local context. The ability to respond to the unique needs of a given space and its community is a testament to this year's winners."

"As our world undergoes rapid transformation, the role of regional architects has never been more critical. Newcastle, a city steeped in history and industry, is now emerging as a hub of innovation and creativity. By embracing sustainable practice and honouring the region's heritage, our local architects are shaping a brighter future for those to come."

"The jury is excited to witness the continued growth and positive impact of Newcastle's architectural profession. Together, we can create a legacy of sustainable and inspiring design excellence."

The 2025 awards night, held at the Newcastle City Hall on Friday 15 November was a celebration of the very best in regional architecture.

The Newcastle Architecture Awards are a program that celebrates exemplary examples of architecture in the Local Government Areas of Central Coast Council,

Lake Macquarie Council, Newcastle City Council, Port Stephens Council, Maitland Council, Cessnock Council, and Singleton Council. The program recognises the importance of regional architecture and looks to elevate it on a national stage, with award-winning

entries invited to progress to the NSW Architecture Awards.

The 2025 Jury engages in a rigorous system of peer review, travelling to shortlisted projects to view the architecture in situ and gain a deeper understanding of how it performs and exists within its context.

Each year, the NSW Regional Architecture Awards jury is made up of a venerated panel of industry experts. This year the jury comprised of: Sarah Lawlor, Government Architect NSW, Matthew Travis, Matte Architecture and Dean Williams, Architect George.

## 2025 NEWCASTLE ARCHITECTURE AWARD WINNERS

### • Newcastle Medallion

Award – **New Castle | Anthony St John Parsons | Awabakal Country**

Other winners include:

Killcare Heights Escarpment House | Matt Thitchener Architect | Darkinjung Country; Murrook | Derive Architecture & Design with Worimi Local Aboriginal Land Council | Worimi Country and Speers Point House | OVDA Studio | Awabakal people, Awabakal Country.



Timber & Forestry enews an authoritative and rapid deliverer of news and special features to the timber and forest-based industries in Australia, New Zealand and internationally. *Enews* is delivered weekly, every Thursday, 48 weeks of the year. Advertising rates are competitive with other industry publications. *Timber & Forestry Enews* hits your target market – every week, every Thursday!

## HEAD OFFICE

Timber Media Australasia Pty Ltd  
PO Box 3001  
Maraylya NSW 2765

## PUBLISHER

Timber Media Australasia Pty Ltd

## EDITORS

Nicky Ainley  
Donyale Harrison  
Jess Hockridge  
editors@timberandforestryenews.com

## ADVERTISING

Campbell McInnes // +61 (0) 406 223 007  
campbellm@timberandforestryenews.com

## ACCOUNTS

Chris Parker // +61 (0) 413 710 203  
cparker@ttnews.com.au

## SUBSCRIBE

www.timberandforestryenews.com



The information contained in this publication has been obtained from sources assumed to be reliable. However, the publishers disclaim all warranties as to the accuracy, completeness, reliability or adequacy of the information displayed. Opinions expressed in Timber & Forestry enews are not necessarily those of directors or the Timber & Forestry enews team. We do not accept responsibility for any damage resulting from inaccuracies in editorial or advertising. The publishers are therefore indemnified against all actions, suits, claims or damages resulting from content in this publication.

# CLASSIFIED ADVERTISING

## EMPLOYMENT

### LATEST JOBS:

- Account Manager
- Business Development Manager

Click to apply

Click this link  
to advertise  
online...

## ADVERTISING PACKAGES

### PACKAGES:

Click this link  
to learn about  
advertising  
packages...

## PRODUCTS & SERVICES

### BUY AND SELL -

New and Used  
Machinery/Equipment

Click this link  
to advertise  
here & online...

## ADVERTISING RATES

### DISPLAY AD RATES

**FULL PAGE:** \$540  
297mmH x 210 mmW

**HALF PAGE:** \$320  
Vertical • 256mmH x 93mmW  
Horizontal • 125mmH x 190mmW

**THIRD PAGE:** \$240  
Horizontal • 73mmH x 190mmW

**QUARTER PAGE:** \$210  
Vertical • 125mmH x 93mmW  
Horizontal • 63mmH x 190mmW

### BANNER ADVERTISING PACKAGES

#### • PREMIUM PACKAGE:

FRONT PAGE publication module, email and website modules

- Front page module • 68mmW x 45mmH
- Top email banner • 1200pxW x 145pxH
- Home page website banner • 1000pxW x 120pxH

#### • STANDARD PACKAGE:

PAGE 6 (or similar) module, email newsletter and website module

- Module • 93mmW x 63mmW
- Email module • 336pxW x 336pxH
- Website module • 720pxW x 744pxH

### CLASSIFIED ADVERTISING

**JOB / BUY & SELL ADS: ONLINE & IN PUBLICATION**  
720pxW x 744pxH

### TERM DISCOUNTS

12 WEEKS: 7.5%      24 WEEKS: 10%      48 WEEKS: 15%

All pricing is excluding GST and based on a weekly booking.  
Overseas bookings are exempt from GST.

### DEADLINES

**Display ads:** Book by 9.00am Tuesday prior to publication.

**Supplied artwork:** 12noon Tuesday prior to publication.

Supply hi-res jpg or pdf to our specifications. This is a digital publication, therefore **NO crop marks or bleed is required.**

**Classified advertising: JOB ADS ARE COMPLETED ONLINE.**

Go to [www.timberandforestrynews.com/post-a-job/](http://www.timberandforestrynews.com/post-a-job/) to place a job vacancy. Book by 12noon Tuesday prior to publication. Job ads are for individual positions. If more than one position is to be advertised, separate ads will need to be created and advertised accordingly.

**BUY & SELL ADS ARE COMPLETED ONLINE.** Go to [www.timberandforestrynews.com/product/buy-sell-advertisement/](http://www.timberandforestrynews.com/product/buy-sell-advertisement/) to place an ad. Book by 12noon Tuesday prior to publication.

### PAYMENT TERMS

New clients invoiced on booking. Existing clients 14 days.  
All other standard Terms & Conditions apply.

### CONTACTS

#### Media releases and editorial:

Nicky Ainley // Donyale Harrison // Jessica Hockridge  
e: [editors@timberandforestrynews.com](mailto:editors@timberandforestrynews.com)

#### Display ad bookings:

Campbell McInnes // e: [campbellm@timberandforestrynews.com](mailto:campbellm@timberandforestrynews.com)

#### Accounts:

Chris Parker // e: [cparker@ttnews.com.au](mailto:cparker@ttnews.com.au)

## Have some news to share?

Send media releases, news stories, events, any timber and forestry news related information with us anytime to Nicky, Donyale and Jess -

[editors@timberandforestrynews.com](mailto:editors@timberandforestrynews.com)

**timber**  
& FORESTRY eNEWS

Contact Nicky,  
Donyale or Jess today...