

DELIVERED
WEEKLY TO
15,200
GLOBAL
READERS*

Like and
follow us on



ISSUE 813 // July 25 2024

timber & FORESTRY *e*news

JOB:

- Wood Machinist
- Technical Sales Manager
- Harvest & Rooding Manager
- Estate Manager
- Account Manager

[Click to apply](#)



Forestry fire specialists en route to assist Canada

COVER STORY P 4

Do you
have
a job
position
to fill?

ADVERTISE TODAY



timber
& FORESTRY *e*news



Wood
Solutions

BOOST YOUR CUSTOMER BASE

CREATE A FREE SUPPLIER LISTING ON
THE WOODSOLUTIONS WEBSITE

GET STARTED

Responsible
Wood

Speak to us about
EUDR implications.

[Click here.](#)

ALL UNDER ONE ROOF

- IR SUPPORT
- TRAINING
- EMPLOYMENT
- WHS
- COMMUNITY



NTHA
NATIONAL TIMBER &
HARDWARE ASSOCIATION

1800 822 621

Green light for Green Triangle pellet mill

GRANT District Council in Mount Gambier has confirmed that the Green Triangle Pellet Mill will go ahead reportedly approving the request to sell Hutchinson Road.

According to Border Watch, Elected members 'opted to approve Mount Gambier Biomass – formerly Altus Renewables – request to acquire Hutchinson Road for \$28,183'.

The \$120m renewable energy plant will produce upwards of 300,000 tonnes of industrial specification pellets each year and generate an estimated \$64.1m for the local economy.

The plant is proposed for land along Hutchinson Road, adjacent to Mount Gambier Regional Airport with the plant to attract a number of b-double trucks during



The now approved mill will generate an estimated \$64.1m for the local economy.

Image: Shutterstock

daytime and night-time.

As part of the development, it was identified the intersection between the Riddoch Highway, Airport Road and Hutchinson Road would require realignment to minimise traffic impact.

Council previously entered agreements with Altus Renewables to approve the development however in 2023, the company was placed into administration.

Earlier this year, Altus Renewables was purchased by Albioma and council was informed the project would proceed.

Grant District Council acting chief executive officer

Gary Button said council was now waiting to work with the operators in regards to the land acquisition of the road reserve and realignment.

"We need to get our documentation prepared and wait to be approached when they are ready to take that next step," Mr Button said.

"The realignment has had some involvement with the Department of Infrastructure and council is now comfortable with that interception being offset as it is far safer than if it stayed as a crossroads."

Mayor Kylie Boston said although the initial project received public backlash, it had since eased off.




"I guess there are a few phone calls when we have something in the agenda but those decisions have to come through council," Ms Boston said.

"Those approvals are done with the state government and we then see it once it comes through and then it has to be administered."

Source: Borderwatch

“UPWARDS OF 300,000 TONNES OF PELLETS PER YEAR”

Preserve your Project, Preserve Timber

Choose a timber preservative with colour to set your project application apart.

- Micronised pigment technology
- Enhances timber grain
- A combination of Micropro's attributes with the added benefit of long lasting colour

www.kopperspc.com.au
1800 088 809

Celebrating a 25 year partnership this National Tree Day

THE countdown is on to National Tree Day for 2024 with councils, schools and other organisations preparing to get planting for another year.

Planet Ark's National Tree Day started in 1996 and has grown into Australia's largest community tree planting and nature care event.

It's a call to action for all Australians to get their hands dirty and give back to the community.

"While every day can be Tree Day, we dedicate the celebration of Schools Tree Day and National Tree Day on the last Friday and Sunday in July," organisers shared on their website.

Since 1996, more than 27 million trees have been planted by more than 5 million volunteers over 10 million hours.

And for Planet Ark's National Tree Day, this year is even more special as they are celebrating 25 years of Toyota Australia as the Major Sponsor of the event.

"Throughout the years, individual Toyota Dealerships have supported their community and school events, providing funding for seedlings and planting equipment as well as merchandise and activities for kids and adults," a spokesperson said.

Meet some of the Toyota Dealers from all over Australia:

John Madill Toyota in Queensland has been heavily involved with National and Schools Tree Day for 15 years. Last year, the dealership worked with



Schools, councils and communities will come together to plant trees for Planet Ark's Tree day with millions to join in. Image: Shutterstock

Gympie's Kitiwah Place Early Learning Centre to offer assistance in the opening of their restored gardens, which were damaged from floods over the past few years. They've also worked with Noosaville State School to plant native trees in their Outdoor Learning Area and this year they'll be helping the school to plant 50 native trees to rejuvenate the biodiversity of the local area.

Leeton Toyota in New South Wales isn't afraid to get involved for National Tree Day having been engaged with community planting efforts for over 15 years. Leeton Toyota has supported Narrandera Landcare and Narrandera Fisheries Centre to plant an array of native trees and shrubs. As an avid

“MORE THAN 27 MILLION TREES HAVE BEEN PLANTED



This year marks 25 years of partnership for Planet Ark and Toyota.

supporter and partner of National and Schools Tree Day, this dealership has worked to guide the local school children in better understanding of how they can nurture the trees and ecosystems around them. This year the dealership will be teaming up with Narrandera Landcare again, this time to plant thousands of native seedlings at Narrandera Wetlands following damage to the area from floods.

Galleria Toyota in Western Australia have been long term supporters of National Tree Day with their involvement beginning over 13 years ago. More recently, this dealership supported

Eden Hill Primary School by lending a helping hand at the planting event and even participated in tree 'naming' activities.

In Victoria, Swan Hill Toyota has been involved in Tree Day events for over 16 years. Last year they provided funding for seedlings at St Mary Mackillop College, where the students planted trees and shrubs outside their Science Room.

A Tasmanian dealership, Co-op Toyota, has been digging in for Tree Day for 15 years, and last year funded planting events at three different local schools.

Bridge Toyota, Northern Territory, who have been involved in Tree Day for 10 years, will this year be providing environmental education for children, planting trees and cooking at a community BBQ.

In South Australia, Big River Toyota have been supporting Tree Day community events for a whopping 18 years. This year they plan to assist groups Berri Barmera Landcare, Riverland Special School and St. Joseph's school Barmera with tree planting.

This year, Schools Tree Day is Friday 26 July and National Tree Day is Sunday 28 July.

For more information and to get involved visit: <https://treeday.planetark.org/>

Forestry fire specialists provide support

FOUR fire specialists from Forestry Corporation will serve as part of a New South Wales deployment of firefighters assisting authorities in Canada to tackle the country's wildfires.

A contingent of 31 incident management, aviation and heavy machinery specialists will depart for Canada from today after AFAC, the National Council for Fire and Emergency Services received a request for assistance from the Canadian Interagency Forest Fire Centre.

The NSW contingent is coordinated by the NSW Rural Fire Service and made up of 20 RFS representatives, five from National Parks and Wildlife, two from State Emergency Services and four



1/ Forest fires are once again running rampant in parts of Canada.

2/ The Australian crews have a vast experience in battling bush fires here and will provide valued skills.

Images: courtesy FCNSW

from Forestry Corporation.

Canada is experiencing significant fire activity with 650 active fires burning.

More than 400 of those wildfires are out of control having burnt a total of 1.5 million hectares of land.

Minister for Regional NSW Tara Moriarty said

Forestry Corporation of NSW personnel had specialist skills and extensive firefighting experience and were proud to be involved.

"My thoughts and best wishes are with the Australian firefighters heading to Canada and those Canadians already on the fire front,"

Ms Moriarty said.

"I'm pleased that our firefighting agencies in NSW, including Forestry Corporation, can work collaboratively locally and assist their counterparts in Canada."

Cont P 5

NTHA CAN

TRAIN AND UPSKILL YOUR EXISTING TEAM MEMBERS

- ✓ Nationally recognised qualifications and training
- ✓ Specialist industry trainers

STRENGTHEN YOUR TEAM

RETAIL, SALES, BUSINESS, SUPPLY CHAIN OPERATION AND LEADERSHIP QUALIFICATIONS

(RTO 5343)
1800 822 621
ntha.com.au

AFPA THE LEADING VOICE FOR AUSTRALIA'S FOREST PRODUCTS SECTOR

From P 4

"Fire really is a universal issue and the skills we have here in Australia for fighting forest fires can be transferred through these overseas deployments."

Forestry Corporation's Bombala-based Silviculture and Fire Coordinator Tim Gillespie-Jones and South Coast Fire and Operations Team Leader Peter Carstairs, who also deployed to Canada last fire season has also flown to British Columbia to join the crew.

Tim Gillespie-Jones has 22 years' experience as a firefighter and started his career as a forester with Forestry Corporation in 2005. He has previously undertaken a host of interstate deployments and has served as a level two Incident Controller and Divisional Commander for the past 10 years culminating in numerous declarations across NSW including the Black Summer bushfires.

"I am excited to be part of this deployment. It is my first international deployment, and it will be great heading overseas with Peter Carstairs, who I work closely with here on the South Coast," Mr Gillespie-Jones said.

"I'm really looking forward

to repaying the favour to the Canadian firefighters who assisted our crews during the Border fire and Rockton fire in 2019 and 2020.

"I worked closely with Canadian firefighters during a large strategic backburn along the Victorian border to protect the softwood plantations of Bondi State Forest. Being able to repay that contribution is a big reason behind my deployment," he said

Peter Carstairs will serve as a Safety Advisor knowing exactly what to expect of the Canadian wildfires after he undertook a month-long deployment over there last year.

"The fires in British Columbia are particularly dangerous firegrounds. The trees are shallow rooted and burn through quickly. When one tree falls, they fall



1/ Lead Forestry Officer Daniel Macaree from Maitland has deployed as a Heavy Plant Supervisor Dozer Boss having worked for Forestry Corporation since 2016.

2/ Canada bound: Forestry Corporation's Peter Carstairs and Tim Gillespie-Jones are deploying to British Columbia.

Images: courtesy FCNSW

down in numbers like match sticks," Mr Carstairs said.

"In the north of British Columbia they had a really dry winter, with not enough snowfall so now in summer the forests are being igniting by dry lightning strikes.

"Last year when our

Australian IMT arrived over there, the Canadian IMT were so relieved as many were completely exhausted having not had a break on the firegrounds for months. It's again at that point now," he said.

"With the current fire situation in Canada, I'm expecting it to be quite challenging. I imagine I will be working with contractors most days looking for and constructing containment lines and providing access to areas," Mr Macaree said.

"I think it will be a challenging yet rewarding experience that I'll be able to draw upon in the future."

To find out more about Forestry Corporation, one of the state's four firefighting agencies, visit www.forestrycorporation.com.au

On the cover: AFAC Canada Deployment team depart Australia. Image: courtesy FCNSW

Unsure how the EUDR may affect you?

Speak with us today.



responsiblewood.org.au

Responsible Wood 

RW/1-10-1

Key stakeholders discuss \$13 m funding package

THE Softwoods Working Group recently convened in Tumut, NSW following the announcement of a \$13 million forestry funding package for a critical meeting with major stakeholders including Forest Corporation NSW, NSW National Parks and Wildlife Service, NSW Rural Fire Service as well as major growers and processors within the South West Slopes of NSW.

This funding, aimed at protecting essential timber supplies in the Murray region ahead of the 2024/25 bushfire season, will support key fire prevention, detection, and response initiatives.

"It's absolutely critical that we get all the stakeholders involved to understand what we have, where our risks are, and where are the vital assets that need protecting" commented Carlie Porteous,

SWG Executive Officer.

The funding package, developed through consultation with local communities, forestry industry groups and government agencies, reflects the NSW Government's commitment to strengthening and safeguarding the State's softwood forestry industry.

"The infrastructure and assets that the group considered involved both physical capital expenditures and digital infrastructure such as IT integration and communications, with a focus on securing much of it by the beginning of the fire season" added Ms Porteous.

"This initiative is key to



The stakeholders from a number of key agencies met to discuss risks and assets. Image: supplied

enhancing the region's safety and resilience. By investing in critical fire prevention and response infrastructure, the project aims to protect not only the forestry industry but also the homes, livelihoods, and well-being of the people living in the Murray region" Stated Peter Crowe OAM, SWG Chair.

During the meeting, stakeholders discussed various critical aspects, including the current state of play and the region's fire risks related to fuel load, terrain, and the location of

essential assets such as future wood supply, mills, orchards, and critical infrastructure. They also evaluated the existing infrastructure, its locations, and the human resources available to operate it, identifying gaps and prioritising new infrastructure needs.

The meeting concluded with prioritising infrastructure and assets to maximise their contributions to fire detection, management, prevention, and suppression. Discussions also touched on opportunities for future studies, including piloting and research on the effectiveness of the infrastructure on fire-related risk and outcomes.

The next steps will involve further prioritisation within the funding rules, detailed cost considerations, and procurement processes.

BARCODES - LOGOS - CUSTOM FONTS

What's a Zebra doing in your Timber Newsletter?

Now that we have your attention... We specialise in advanced machinery for **printing, marking, coding and labelling, with a range of solutions tailored to the timber and construction industry.** A wide variety of inkjet printers and ink technology, means our products cater to every stage of manufacturing and processing. Whether you're a small-scale operation or a large timber corporation, our expertise supports your production line's efficiency and accuracy.

Visit us: worldwidecoding.com or **Scan the Zebras QR Code**
Call us: 1300 662 829 **Email us:** info@worldwidecoding.com.au



WorldWide
CODING
 Solutions

"when reliability matters"

DATAMATRIX CODES - DATABASE MANAGEMENT

JULY

25-26: AIBS WA Chapter Conference – Crown Perth, Great Eastern Highway, Burswood. While specifically targeted at Australian Institute of Building Surveyors members, the conference will be looking at issues across the built environment from decarbonising construction to legislative updates, insurance and Standards. WoodSolutions is sponsoring Dr David Bylund of TMBR Consult in his presentation: Fire Compliance - NCC 2022 Made Easy with WoodSolutions. The two-day conference also includes a sundowner for networking on Thursday night.

For full details and to book, go to <https://aibs.com.au/2024-Conferences--Events/WA-Chapter-Conference-2024/ProgramandSpeakers.aspx>

28-2 AUG: Gottstein Understanding Forest Science Course – Sunshine Coast, QLD. The course is open to everyone associated with the timber and forestry products sector in some way. For full details, visit <https://gottsteintrust.org/grants-courses/understanding-forest-science-course>

AUGUST

12-13: Timber Construct Conference – Rydges, Melbourne. The Timber Offsite Construction Conference and Exhibition has been rebranded

as the Timber Construct Conference to encompass the full spectrum of timber building. The conference provides an invaluable forum to address pressing challenges and opportunities influencing timber's role across the built landscape. Technical sessions will cover research updates, emerging products, building code enhancements, and best practice case studies. For more information, visit <https://timberoffsiteconstruction.com>

SEPTEMBER

7: WFTN 'Cocktails for Charity' event, 2.00 - 6.00pm – Loft West End, Brisbane. Join us for an afternoon of cocktails and charity to support RizeUp, an organisation dedicated to providing life-changing practical assistance to families affected by domestic and family violence. Tickets on sale soon.

13: NTHA NSW/ACT State Awards – Hilton, Sydney. Join us in celebrating the New South Wales & ACT Timber and Hardware Industry. Nominations open at <https://www.ntha.com.au/events/2024-nswact-state-awards-nominations/> Contact Tahlia at events@ntha.com.au

23: Latin America Forest Investment Conference – Porto Alegre, Brazil.

24-25: International Woodchip and Biomass Trade Conference – Porto Alegre, Brazil.

25-27: Field Trip – Rio Grande do Sul State, Brazil.

OCTOBER

22-23: International Woodchip and Biomass Seminar and Networking Event – Singapore.

29-31: Forestry Australia's 2024 Symposium – Mercure Ballarat Convention Centre, Golden Point, VIC. Theme: Healthy and resilient forests for our future, will facilitate conversation and collaboration that regardless of land tenure and ownership, healthy and resilient forests should be the objective for all forest and land managers. The Symposium is a focused three-day gathering, consisting of two days of plenary and concurrent sessions, and a day of Field Trips. The two-day program will feature a range of Keynote and Invited Speakers, who are experts and thought leaders in their field. The Symposium will also feature several social functions, facilitating networking and collaboration in an informal and relaxed environment. For more information, visit <https://www.forestry.org.au/2024-symposium/>

NOVEMBER

13-15: AFCA annual Gala dinner & conference – Launceston, Tas. For more information visit: <https://www.afca.asn.au/Events/afca-2023-conference-photo-gallery>

SAVE THE DATES 2025

MARCH 22: NTHA SA/NT/WA State Awards – National Wine Centre, Adelaide. Join us in celebrating the SA, NT & WA Timber and Hardware Industry. Contact Tahlia at events@ntha.com.au

MAY 30: NTHA QLD State Awards – Brisbane City Hall, Brisbane. Join us in celebrating the New South Wales & ACT Timber and Hardware Industry. Contact Tahlia at events@ntha.com.au

MARCH 25-28: DANA Global Wood Products Supply and Demand Trends Seminar, Global Forest Investment Conference, and WWII Battle of the Bulge Battle sites tour – Europe. Contact admin@dana.co.nz

JUNE 22-26: World Conference on Timber Engineering – Brisbane. WCTE is the world's leading scientific forum for the presentation of the latest technical and architectural solutions and innovations in timber construction.

OCTOBER 20-22: International Woodchip and Biomass Seminar and Networking Event – Singapore.

OCTOBER 23-24: Field Trip – Vietnam.

A CUT ABOVE...

Do you crosscut timber packs at ± 1 mm accuracy?

Or cut structural timber, panel products (MDF & LVL), paper rolls?

Or produce pallet dimensions or studs on fixed lengths?

HOLTEC has a solution for you!

Our scope of supply:

- Mobile and stationary chainsaws
- Timber crosscut stations
- Log cutting stations
- Circular saws

- Mechanisation
- Sorting lines
- Scanning and optimising systems
- Special systems



For more information contact:

HOLTEC
YOUR PARTNER FOR THE PERFECT CUT

Ph: +64 9 416 8294 // Fax: +64 9 416 8296
Email: sales@holtec.org // Web: www.holtec.org

Tasmanian Oak gains contract security until 2040

Australia's most loved and affordable hardwood is here to stay.

EUCALYPTUS are quintessentially Australian. They have quite literally built our nation. With the closure of the Victorian timber industry, there has understandably been fear that other states would follow, but Australia's most loved hardwood, Tasmanian Oak is here to stay. Our supply chain is secure, and Tasmanian timber suppliers are eager to work with architects, joiners, stair-makers, merchants, builders and wholesalers to fill the gaps left by Vic Ash. We can't solve the whole problem, but engage early, communicate your needs and we'll help find a local solution. We need to work together to keep Australian timber in Australian homes.

TASMANIAN HARDWOOD SUPPLY OBTAINS BIPARTISAN SUPPORT

The future supply of Tasmanian hardwood is secure. The Tasmanian government recognise the value of a sustainable forest industry. Both the Tasmanian Liberal government¹ and Labor opposition² have provided assurances that timber contracts will be extended out to 2040. This bipartisan support provides certainty to the whole timber supply chain. In addition to resource security from the public estate, Tasmania's world-leading private forest estate continues to flourish. It is however important that Australian manufacturers continue to support their local timber industry and where

possible, not fill the gap with imports. Here's why.

ECONOMICS

The Tasmanian Government have announced that they will increase the weight they place on 'buying local' in procurement from 25% to 30% under its Buy Local policy, to support local business. Why? Buying local builds our economy.

Australia needs sovereign manufacturing to maintain national resilience. The ABC reported this week that "Australia is importing more than it is exporting, which is a negative for economic growth." The trade deficit in timber in Australia is already over 3.7 billion annually³. We should produce as much as we can at home and support our local industries to continue to do so.

The Australian Made campaign says, "It just makes sense to buy things that are made or grown in Australia."⁴ When you buy Australian products, the money stays in Australia. You are supporting Australian jobs [and skills retention] because the company that produces that product can employ more Australians. If more Australians have jobs, it means families are more likely to have more money to buy more things. Companies and employees then pay more tax to the Government to spend on things like schools and hospitals.⁴

EVER PRESENT IMPORT RISK

Relying on imports is inherently risky. Foreign

exchange rate fluctuations, highly volatile prices stemming from supply and demand fluctuations in other countries, and uncertain lead times that fluctuate due to international shipping, can make relying on imports problematic. Buying locally eradicates these issues. You have direct access to your supplier and local accountability. If there is an issue with the timber you have purchased, you can access support and replacement timber quickly. Tasmanian Timber has an expert helpline for free technical support offered by the Centre for Sustainable Architecture with Wood (CSAW) at the University of Tasmania - Phone 1300 041 766.

BUYING LOCAL IS GOOD FOR THE ENVIRONMENT

About 50% of the dry weight of wood is carbon.⁵ In a world where supply chains are battling carbon footprints and carbon miles, why let any of that stored carbon go to waste by shipping it across the world? We have beautiful Tasmanian timber here at home.

Tasmanian Timber is certified sustainable by a global body, PEFC, and governed by a two-tier independent world-leading

regulatory framework, which is unique in Australia. Our timber is also independently audited to ensure it meets the Australian standard and has full chain of custody from the end-product right back to the forest practices plan that governed the sustainable harvesting at the coupe. Some imports are not certified as being sustainably produced, and illegal logging is still an issue with imported timber. Due diligence must be done to ensure the provenance of the timber is trustworthy and meets both our high standards of sustainability and quality. Tasmanian timber is a timber you can trust.

CONSUMER PREFERENCE

Another great reason to buy local is that consumers prefer it. Research shows that end users love Tasmanian Oak (Pollinate 2021). It is beautiful, sustainable, available and local.

To find out more about the Tasmanian timber supply chain, tune in to our current podcast series, the Original Thinkers Podcast at www.originalthinkers.com.au.

For more information, visit tasmaniantimber.com.au

¹ <https://tas.liberal.org.au/sites/default/files/2024%20100%20Day%20Plan.pdf>

² <https://www.timberbiz.com.au/labors-election-plans-for-tasmanian-forestry/>

³ Australian Forest Products Association.

⁴ <https://australianmade.com.au/media/1142327/ausmade-facts-important.pdf>

⁵ <https://makeitwood.org/benefits>

“THE FUTURE SUPPLY OF TASMANIAN HARDWOOD IS SECURE”

Stay true

Tasmanian Oak is the preferred choice for those who demand the most beautiful, workable hardwood timber. It's the environmentally conscious choice as well. Every one of our 800,000 hectares of production forest is sustainably managed, of which only 1% is harvested (and regenerated) annually. While some regions have ended native forestry, our industry and sustainably managed forests continue to thrive. Good news for discerning clients who want to stay true to their roots, quite literally.

ORIGINAL

**T A S M A N I A N
T I M B E R**™

Photo: Tari C Peterson



Scan to read
the full story



Discover more at
tasmaniantimber.com.au

Manly Sea Eagles soaring for Trees for Tries

IT'S an unusual but welcomed conversion for NRL points with the Manly Warringah Sea Eagles NRL team partnering with 4 Pines Brewing for the Tries for Trees initiative.

The initiative is in its second year after the Sea Eagles last year, 2023, caught wind of their Official Beer partner's planting program with Landcare Australia, saying 'they wanted to chip in'. Now, they're contributing again the only way they know how: scoring tries.

The partnership sees 4 Pines Brewing planting 100 native trees, shrubs or grasses for every try scored by the Sydney-based NRL team.

"This is another fantastic initiative from 4 Pines. It's



1/ 4 Pines are always thinking outside the square when it comes to new ideas.
 2/ 4 Pines and the Sea Eagles tree planting initiative, "Tries for Trees", will plant up to a maximum of 44,444 trees every year over 3 years from 2022. Images: Manly Warringah Sea Eagles and 4 Pines Brewing

truly a team effort that I am sure is going to produce some fantastic outcomes," said Sea Eagles Captain Daly Cherry-Evans.

"At Manly, we all love scoring tries and I am confident we can beat the 93 total from last year. If we can

manage to put a few trees in the ground off the back of that, even better!"

4 Pines and the Sea Eagles tree planting initiative, "Tries for Trees", will contribute to 4 Pines' overall commitment with Landcare Australia to plant up to a maximum of 44,444 trees every year over 3 years from 2022.

Last year, off the back of 93 tries scored across the season, 4 Pines committed to planting 9,300 trees. Weather permitting, the native trees, shrubs and grasses will be planted at Inverell in Northern New South Wales later this year.

"Our partnership with the Sea Eagles gives fans more to cheer about this year, connecting the progress of stars like Jason Saab up the right wing to progress for the environment," said Todd Atkinson, 4 Pines Brewing Co-Chief Executive Officer.

"Watching Manly score tries has never felt this good. It's great to have Manly on board with our 'Good Stuff' agenda, allowing punters to crack a beer at the footy and enjoy the game knowing that by supporting 4 Pines, they're helping us do good stuff like planting trees."

Sea Eagles CEO Tony Mestrov said the Club has a very strong and successful partnership with 4 Pines.

"We are very proud of our partnership with 4 Pines and their dedication to making a real difference in the community and for the environment," Mestrov said.

"4 Pines are always thinking outside the square when it comes to new ideas, and we think this is a great one. The more tries we score, the more trees are planted. Everyone wins."

Dr. Shane Norrish, Landcare Australia, Chief Executive Officer, said they are proud to work with 4 Pines.

"We welcome the opportunity to work with the team at 4 Pines to continue to deliver the commitment to plant up to 44,444 native trees, shrubs and grasses every year with Landcare Australia," Dr Norrish said.

"Our partnership with 4 Pines is an ongoing example of how corporate Australia can make a meaningful difference with Landcare in protecting our natural assets in conjunction with local communities."

Do you have SOMETHING to say?

Share observations, comments, opinions, by email and, subject to normal editorial rules, your feedback will be published. Send media releases, news stories, events, any timber and forestry news related information anytime to Nicky, Donyale and Jess at the following dedicated email address - editors@timberandforestrynews.com



Hello!

s B d f

? @ #

Dear Editor



Book now for WFTN Charity Cocktail event

THE Women in Forests & Timber Network (WFTN) Queensland is excited to announce the 2024 Charity Cocktail Fundraiser will be held on Saturday, 7 September, dedicated to supporting RizeUp Australia. This event aims to raise essential funds and awareness for RizeUp's critical work with families affected by domestic and family violence.

WFTN Queensland proudly supports RizeUp's mission to create safe and hopeful beginnings for families in need.

"We warmly invite not only women and men within our industry but anyone with a

“SUPPORTING A GREAT CAUSE

desire to support a great cause," a spokesperson said.

Organisers say the success of this event is made possible through the generous contributions of our sponsors and donating partners; "we extend our sincere thanks to everyone involved in making this event possible".

"Join us for an afternoon of drinks, canapes and networking as we come together to support RizeUp Australia and the families they serve.

"Your participation and donations will make a

wftn* women in forests and timber network

rizeup AUSTRALIA

INVITES YOU TO

COCKTAILS FOR CHARITY

SEPTEMBER 7TH 2024
LOFT WEST END
100 BOUNDARY STREET
WEST END QLD 4101

2PM - 6PM

TICKETS \$65
PRICE INCLUDES A WELCOME DRINK, CANAPES AND A RAFFLE TICKET TO ENTER INTO THE LUCKY DOOR PRIZE.

RSVP BY 22ND AUGUST

SUPPORTED BY OUR ANNUAL PARTNER

WOODHOUSE

An invitation goes out to everyone... "participation and donations will make a significant difference in the lives of those rebuilding after domestic and family violence."



Last year's event raised an impressive \$20,000 for BDVS.
Image: Creative Bird Design

This year's event will be held at the Loft West End in Queensland and will commence at 2pm. Tickets include a welcome drink, canapes and a raffle ticket to enter into the lucky door prize.

To purchase tickets and for more information, visit: <https://www.ntha.com.au/eventdetails/25321/wftn-cocktails-for-charity>

significant difference in the lives of those rebuilding after domestic and family violence."

arxada

IS IT SAFE TO USE PRESERVATIVE - TREATED WOOD FOR MY RAISED GARDEN BED?

Yes!

TANALITH® E Copper Azole treated timber is safe to use around fruit and vegetables!



TRUST

Tanalised®

Ecowood®

PROVEN WOOD PROTECTION

Tanalised, Tanalith, & Ecowood are registered trademarks of Arxada @ 2023

Director recognised for achievements

PROFESSOR Tripti Singh, the Director of the Centre for Timber Durability and Design Life has been recognised by The Society of Wood Science and Technology (SWST) for her contribution to wood science and her renowned research excellence.

The Centre is a FWPA-supported initiative that aims to be a global leader in timber durability and design life research, by creating coordinated exploration into timber durability and encouraging and educating a new generation of research scientists to continue this work across the country.

FWPA CEO, Andrew Leighton said the award was

further recognition of the Centre's important work and Professor Singh's leadership.

"Since its inception, the Centre has made important progress to ensure Australia has access to the world's leading research, building strong links between industry, academia and customers," said Mr Leighton.

"Professor Singh's reputation for research and collaboration makes her the ideal leader for this innovative work. We are very proud to see her recognised on the world stage, raising the profile of her work, the Centre for Timber Durability and Design Life and the Australian timber industry as a whole."



Professor Tripti Singh joined the Centre as Director in August 2023.
Image: Scion

Reflecting on the award, Professor Singh said, "I am deeply honoured to be recognised as a Woman Ambassador and join 22 other remarkable women included last year. I extend my heartfelt thanks to colleagues from Australia for the nomination."

Professor Tripti Singh joins the ranks of SWST's 'Women Ambassadors Creating the Future of Wood Science,' and was formally recognised in a

ceremony in Portoroz, Slovenia this month. Kyra Wood from University of Tasmania was one of the recipients of the award in 2023. Adding new members each year, the Women Ambassadors program produces a travelling exhibition sponsored by SWST, designed to showcase the work and accomplishments of women in wood science around the world.

Following the ceremony in Slovenia, the Women Ambassadors exhibition will now travel the world, culminating in the 2025 SWST Convention in Fort Collins, Colorado.

Event attendees invited into the forest virtually

FWPA is excited to provide opportunities to enhance engagement on the sustainable nature of forestry at industry events by using virtual reality (VR) to transport attendees into the heart of the forest.

Six new VR headsets have been made available for use by stakeholders to provide immersive experiences during events including conferences, trade shows and career expos.

Using the award-winning suite of ForestVRTM resources the headsets take users on virtual tours of a variety of Australian forest and processing mill environments, as well as guiding them along the timber product supply chain from seed to shelter.

Developed by FWPA's ForestLearning program, the ForestVRTM resources have already made an impressive impact on teachers and students in Australian classrooms. Now they are proving equally as popular at industry events, having been met with enthusiasm from attendees at the recent Balingup Small Farm Field Day in Western Australia, Mid Coast Careers Market in New South Wales, and the Royal Darwin Show in the Northern Territory.

The headsets are available on loan, free-of-charge through ForestLearning. They don't require a Wi-Fi connection, meaning they offer an easy and effective way to engage with attendees in any setting.



The new VR headsets create an immersive experience at shows and events. Image: FWPA

Beth Welden, ForestLearning Program Manager, said ForestVRTM is the perfect way to share the unique story of Australian sustainable forestry.

"These highly immersive

experiences guide the user through the forest and timber processing journey, showcasing the use of renewable forest products in everything from buildings to everyday items such as paper," Welden said.

"We have already helped countless students Australia-wide to appreciate the complexity and breadth of our sustainable forest management systems, and we're looking forward to helping industry bring the vibrant world of forestry and wood products to life for even more Australians."

For more information on the ForestVR™ visit <https://fwpa.com.au/>



An industry services company working to grow the forest and wood products market
Visit us at fwpa.com.au

Tasmanian RFA outcomes report released

THE outcomes report for the fifth review of the Tasmanian Regional Forestry Agreement (RFA) has been released.

The report marks the first stage in the independent review process, which will now progress to stakeholder consultation.

Interested individuals are encouraged to provide their feedback on the outcomes report through a Have Your Say consultation managed by the Tasmanian Department of State Growth.

Individuals have until midnight on 30 August 2024 to have their say: https://www.stategrowth.tas.gov.au/about/divisions/forestry/legislative_and_policy_framework/have_your_say

Established in 1997, the RFA is a joint initiative funded



Tasmanians can now have their say on the Regional Forestry Agreement

Image: Natalie Tapson, *Eucalyptus subcrenulata*

by the Commonwealth and Tasmanian Governments that sets out a long-term plan for the management and conservation of Tasmania's native forests.

The outcomes report covers the 2017 to 2022

period and marks the first review since the RFA was extended in 2017 for an additional 20-year period.

The 5-year review process is critical to ensuring the Tasmanian RFA's objectives are still being met.

As part of the RFA review, Professor Jerry Vanclay from Southern Cross University has been appointed as the independent reviewer.

He will now undertake a detailed consultation process as he considers the outcomes report and develops his own independent report.

Professor Vanclay is a pioneer in the modelling of forest ecosystems and has significantly influenced the sustainable management of forests worldwide.

The comprehensive review underscores the commitment to sustainably managing Tasmania's forest resources and highlights significant advancements and compliance in forestry practices.



2024 DANA - GINGKO

GLOBAL WOODCHIP AND BIOMASS TRADE CONFERENCE & NETWORKING EVENT

















All 26 speakers confirmed!



GINGKO
CONSULTING

SINGAPORE CONFERENCE 21 - 22 OCT + 2 DAY FIELD TRIP TO GUANGXI, CHINA 24 - 25 OCT

2 day conference at Grand Copthorne Waterfront Hotel, Singapore

26 speakers on several themes:

- The global status of the tree based carbon credit industry
- Global Wood Chip Trade: Regional user and supplier updates
- Details of 160+ dedicated woodchip vessel shipping fleet
- Global Biomass: w/chips, white/black pellets and PKS
- Global pulp-mill status/expansions/future: Market pulp trends
- A 'New Projects, New Products' panel.

Optional 2 day field trip to Guangxi, China

Visits to:

- Eucalyptus nursery/plantations/harvesting
- Wood panel plants
- Pulp mill
- Wood import port

FOR WEBSITE

[CLICK HERE](#)

OR TO CONTACT ORGANISER

[CLICK HERE](#)

Short rotation forestry in NZ: four preferred species identified

Part Two. By MICHAEL SMITH

IN this follow-up to last week's story (see edition 812) on short rotation forestry (SRF) in New Zealand, Dr Alan Jones from Scion talks further about SRF's potential to upscale bioenergy production to help meet the country's net zero carbon commitments.

Dr Jones says four preferred forestry species for short rotation crops have been identified using Scion's growth modelling analysis – *Pinus radiata*, *Eucalyptus fastigata*, *E. regnans* and *E. nitens* (all established in New Zealand).

"*P. radiata* has the greatest overall potential for short rotation forestry planting, owing to rapid growth rates and a relatively high degree of adaptability to a range of possible growing locations.

The species also benefits from decades of genetic improvement work on wood productivity and disease resistance, together with an advanced existing silvicultural knowledge base."

Dr Jones explains that Scion's economic analyses accounted for returns from the Emissions Trading Scheme (ETS) and assumed an eight-year 'averaging' point for standing carbon under ongoing 16-year rotations.

"Returns from short rotation forestry would be widely profitable from this regime under a \$50 per tonne CO₂ price point, across 1.5 million hectares of lower value grazing land nationally."

E. nitens and *E. regnans* are generally suited to cold regions,



1/ Dr Paul Bennett (left) and Dr Alan Jones: Scion has identified four preferred forestry species for short rotation crops.

2/ *Pinus radiata* has the greatest overall potential for SRF and the widest economically viable area for future plantings.

Images: Scion



while *E. fastigata* can be sited in a number of North Island areas. "They are currently grown in some parts of New Zealand for pulp production, at similar stocking rates to those proposed by our productivity modelling for short-rotation bioenergy [650-1,250 stems per hectare]."

Eucalyptus species included in Scion's research are generally more susceptible to pests and diseases than pine. "*E. nitens* has the greatest challenges due to its susceptibility to defoliating insects. This may be overcome by siting in cooler locations, which reduces insect numbers."

Dr Jones adds that redwoods, and other coppicing species, were part of the research discussions.

"Coppicing has some advantages over conventional plantation regimes, but it also presents challenges in terms of terrain limits for harvesting.

"Some coppice trials have been established, but to my knowledge there are no significant commercial-scale coppice plantations for bioenergy nationally.

"Coppice machinery takes the form of wheeled harvesters which have operational slope limits of <11°. Harvesting coppicing species on steeper slopes would require manual cutting with a chainsaw, which is time-consuming, expensive and potentially dangerous.

"It's probable that both coppice and short rotation forestry systems will be established in different types of locations nationally. Species like redwood may be limited to sites with preferential environmental criteria.

"We selected the species in our published work owing to expectations of a relatively wide environmental growing range and rapid growth rates,

particularly during the initial phases of establishment."

Dr Jones adds that Scion researchers are also looking at ways to optimise tree genetics by re-evaluating past stock for compatibility with bioenergy.

"Conventional tree breeding over the past 50 years has focused on timber quality, minimal branching and straightness. As a feedstock for bioenergy, optimal trees have very different traits.

"Fundamentally with SRF we are trying to maximise the density of energy produced per unit area of land – or, more specifically, the greatest quantity of energy per dollar invested.

"To achieve this, we need fast-growing genetics, obviously, but also high wood density, high incidence of branching, high resin production and even, potentially, things like reduced expression of biochemicals such as hemicelluloses in cell walls.

"The challenge is that some of these traits can be mutually exclusive, so careful consideration of trade-offs affecting processes and investments across a range of scales will be needed – from plant cell to processing and end-use.

"But in reality, I think landowner-growers are going to want to select the best compromise genetics for a range of possible outcomes."

Scion's research is summarised in the recently released Short Rotation Forestry Bioenergy Handbook, available in pdf form. [Click here to download the pdf.](#)

Detached home builds set for an increase

“SALES of new homes nationally increased by 15.7 per cent in the June quarter 2024 compared to the March quarter indicating that the number of homes commencing construction is set to increase later this year,” stated HIA Economist, Maurice Tapang.

The HIA New Home Sales report is a monthly survey of the largest volume of home builders in the five largest states and is a leading indicator of future detached home construction.

“This increase in sales was first observed in Western Australia in the second half of 2023 when sales in that market started to increase. This year, sales in Queensland and South Australia have also observed a sustained increase in recent months,” added Mr Tapang.

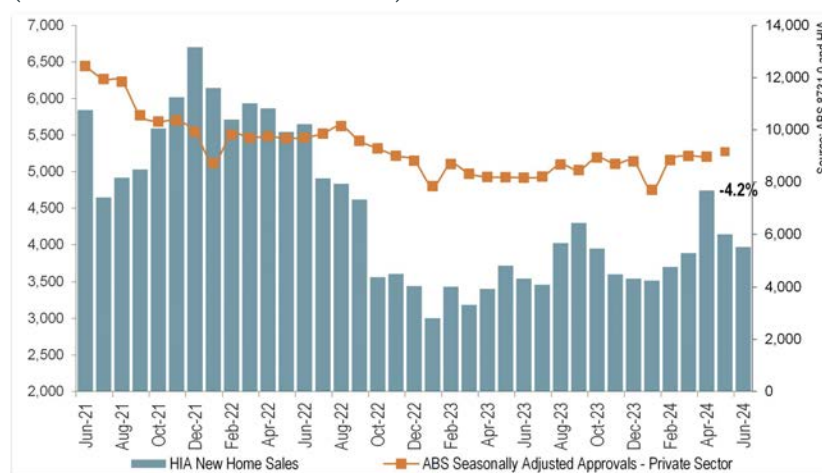
“Driven by this increase in sales in these three states, new home sales in the June quarter 2024 were 20.4 per cent higher compared to the same period in the previous year.

“With the sales recovery in these markets now sustained, an increase in the number of new detached houses commencing construction will be observed in the second half of this year, albeit from a low base.

“Market confidence is returning as the impact of rate increases dissipates and the shortage of housing stock makes new home building increasingly attractive.

“These three markets have seen demand for new homes increase due to strong employment opportunities and relatively affordable land, driving local population growth.

PRIVATE NEW HOUSE SALES - AUSTRALIA (SEASONALLY ADJUSTED)



Source: HIA Economics. Graph: HIA

“At the same time, new home sales in New South Wales and Victoria remain weak despite similar growth in demand. The adverse impact of rate rises is more significant here due to the higher cost of residential land in Sydney and Melbourne.

“Sales in New South Wales and Victoria have also been constrained by the introduction of additional regulatory costs, through the National Construction Code which has distorted sales data.

“As a result, there is not the significant or sustained increase in sales required to expect an increase in home building in either of these markets.

“The higher cost of delivering a new house and land package, due to higher taxes, fees and charges in these markets, is impairing the recovery of detached home building.”

The ABS also released its Building Activity data today for the March quarter 2024. This data provides estimates of the value of building work and number of dwellings

commenced, completed and under construction across Australia and its states and territories.

“There were 39,720 dwellings that commenced construction in the March quarter 2024. This is 0.5 per cent higher compared to the previous quarter, but 13.5 per cent below compared to the same quarter in the previous year.

“Australia completed 41,330 dwellings in the March quarter 2024, which is 9.5 per cent lower than the previous quarter and 8.1 per cent lower compared to the previous year.

“There were 25,600 detached homes that were completed in the March quarter 2024, down by 16.8 per cent compared to the previous quarter and down by 8.9 per cent compared to the previous year.

“The volume of residential

“NEW HOME SALES SAW THE LARGEST INCREASE IN JUNE QUARTER

dwellings under construction rose marginally in the quarter but remained lower than at the same time in the previous year. This suggests that home building will not continue to drag on GDP growth,” concluded Mr Tapang.

New home sales saw the largest increase in the June quarter 2024 in New South Wales, up by 32.8

per cent compared to the March quarter, followed by South Australia (+29.3 per cent), Queensland (+19.5 per cent), Victoria (+10.3 per cent), and Western Australia (+7.8 per cent).

New home sales in the financial year 2023/24 increased by 25.4 per cent in Western Australia, followed by Queensland (+10.6 per cent) and South Australia (+2.3 per cent). The two other states recorded a decline in 2023/24, with Victoria down by 7.6 per cent and New South Wales down by 7.5 per cent.

Dwelling commencements in the March quarter 2024 increased by 24.9 per cent in Western Australia compared to the same quarter in the previous year, followed by the Australian Capital Territory (+24.7 per cent). The other jurisdictions recorded a decline in commencements, led by the Northern Territory (-41.2 per cent) followed by Tasmania (-37.0 per cent), New South Wales (-29.7 per cent), Victoria (-13.8 per cent), Queensland (-9.5 per cent), and South Australia (-4.8 per cent).

Early bird registrations for Forestry Symposium

EARLY bird registrations for the 2024 Forestry Australia Symposium close Wednesday July 31. The event will be held at the Mercure Ballarat Convention Centre in Victoria from Tuesday, October 29th to Thursday the 31st. The theme of this year's event is 'Healthy and resilient forests for our future', with organisers putting together an exciting program of events for the days.

A number of concurrent sessions will be held along with a panel discussion, trade exhibition and Symposium dinner. Additionally, attendees will be welcome to join several field trips.

"Field Trips are such a wonderful way to have a hands-on learning experience," organisers shared.

Attendees will be welcome to join one of 6 field trips including;

Field Trip #1 – Creswick, history & people

This tour will include a visit to the Lost Trades Centre, University of Melbourne's Creswick facility (formerly the Victorian School of Forestry). It will look at the effects of gold mining on forests in the vicinity, including historic water management and impacts on the structure and diversity of the forests. This tour will give some of the back story of the development of forestry in Victoria and directions of future forest research.

Field Trip #2 – Forest gardening and caring for country

This field trip will be hosted by DJAARA, The Dja Dja Wurrung Clans Aboriginal Corporation to introduce participants to Galkalk Dhelkunya ("to care



The 2024 Forestry Australia Symposium has a filled program including a panel session along with field trips with early bird offers closing soon.

Image: Forestry Australia

for/to heal, many trees") Forest Gardening Strategy. "The term 'Forest Gardening' communicates how Dja Dja Wurrung People interact with the environment – it's a contemporary approach to caring for Country that is deeply rooted in traditional knowledge and practice

Field Trip #3 – Plantations

Hosted by the HVP Plantations, AKD Softwoods and ArborCarbon, this field trip will visit plantations in the Mt Lonarch area to the northwest of Beaufort. Some of these plantations were burnt in February 2024 by the 22,000 hectare Bayindeen / Beaufort fire. Plantation health and fire protection will be the focus of the trip. In particular, the value of integrated long-term plantation health monitoring and the operation of CFA Forest Industry Brigades in fire management. Pests and diseases associated with fire-

“HEALTHY AND RESILIENT FORESTS FOR OUR FUTURE”

affected plantations and their potential impacts on adjoining plantations and replanted forests will be examined.

Field Trip #4 – Woookarung Regional Park

This half-day trip will commence with a visit to the Prime Ministers' Walk in the Botanic Gardens, where we get a nineteenth century view of parks and gardens. We will then visit the 5-storey mass timber building of Ballarat GovHub for a discussion on the role of timber in architecture before visiting the Woookarung Regional Park established in 2016 adjacent to the Canadian pine plantation. This park features a dementia-friendly forest and sensory trail. Tony Fitzgerald and Kerry Wailes will lead participants on an experience of forest therapy. Prepare to move slowly! The morning will finish with a tea ceremony.

Please note: This is a half-day field trip (returning by lunch).

Field Trip #5 – Wombat State Forest | Storm and fire recovery

This tour will visit the

Wombat Fire Effects Study Areas (FESA), an experiment established in 1984 by Dr Kevin Tolhurst AM, which had replicates based on short rotation and long rotation fire frequency, in both spring and autumn. We will also visit some of the other silvicultural experimental sites in the Wombat Forest, and look at the lessons from these in relation to prescribed fire management, and recovery from the severe storm damage that occurred in October 2021. The tour will be led by staff from Melbourne University and retired research scientist John Kellas, and visit Barkstead and Bullarto before returning via Daylesford.

Field Trip #6 – Farm forestry

Hosted by members of the Ballarat Region Treegrowers (BRT), this tour will visit two sites demonstrating forest management projects on private tenure that integrate landscape rehabilitation with long-term, sustainable farm-forestry. Established by the BRT, the biorich plantations initiative bridges the gap between environmental plantings for biodiversity conservation values, and production farm forestry for landholder use and profit. The second site is a 400ha reforestation effort facilitated by the Grow West program that aims to rehabilitate degraded land through revegetation and farm forestry projects. This site visit will be led by program partner Moorabool Landcare Network.

For registrations and more details visit <https://www.forestryconference.com.au/program/>

Canada to plant over 52 million climate-resilient trees

THE Government of Canada has announced it is taking a significant step forward in the country's approach to tackling the dual crises of climate change and biodiversity decline by planting two billion trees over a decade.

The Honourable Ginette Petitpas Taylor, Minister of Veteran Affairs and Associate Minister of National Defence, on behalf of the Honourable Jonathan Wilkinson, Canada's Minister of Energy and Natural Resources, alongside the Honourable Hugh J.A. (Ted) Flemming, New Brunswick Minister for Natural Resources and Energy Development, Annika Chiasson, Executive Director of New Brunswick Environmental Network, and Shane Boyd, Project lead of Petitcodiac Watershed Alliance, announced over \$71 million in federal and provincial funding to support tree-planting projects in New Brunswick.

Together, the Government of Canada and the Government of New Brunswick will provide more than \$71 million to support progressive tree planting in New Brunswick, ensuring the right trees are planted in the right places so that the province's forests can thrive in a changing climate. With this investment, the Province of New Brunswick aims to plant over 52 million climate-resilient trees on publicly managed land: the equivalent of planting over 60 trees for each resident of New Brunswick.

Additionally, a \$295,000 contribution to the New Brunswick Environmental Network (NBEN) has been



More than \$71 million has been provided to plant two billion trees in two years. Image: Doug Kerr via Flickr.

allocated, which will use the funding to educate and train individuals and organizations on seed collection, tree planting and restoration techniques. The NBEN will collaborate with local nurseries to grow native and climate-resilient seedlings from collected seeds. These services will be available to tree-planting organizations and landowners in New Brunswick.

A \$33,000 contribution for the Petitcodiac Watershed Alliance to work with local communities in identifying and caring for tree-planting sites in the City of Dieppe. This project has empowered local community tree-planting initiatives by transferring knowledge through staff and volunteer training, which resulted in 2,000 new trees being planted in Dieppe in 2023.

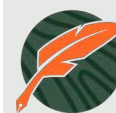
Federal funding comes from the 2 Billion Trees program, part of the Government of Canada's broader approach to nature-based climate solutions. Trees planted help to clean the air,

keep neighbourhoods cool in the summer, create jobs and fight climate change while protecting nature. By working together with provinces, territories, local communities, non-and for-profit organizations and Indigenous Peoples, Canada continues to build a strong, healthy future for generations to come.

"Partnering with provinces and territories plays a critical role in the sustainable management of our forests and tackling the dual crisis of climate change and biodiversity loss," Minister of Energy and Natural Resources, Wilkinson said in a statement.

"The Government of Canada is pleased to be partnering with New Brunswick to continue making progress toward planting trees that will clean the air we breathe, improve water quality and mitigate climate change across Canada. Through collaborative action and dedication, we are taking a step in the right direction to create a healthier environment for generations to come."

Source Government of Canada



Timber Media
AUSTRALASIA

Timber & Forestry enews an authoritative and rapid deliverer of news and special features to the timber and forest-based industries in Australia, New Zealand and internationally. *Enews* is delivered weekly, every Thursday, 48 weeks of the year. Advertising rates are competitive with other industry publications. *Timber & Forestry Enews* hits your target market – every week, every Thursday!

HEAD OFFICE

Timber Media Australasia Pty Ltd
PO Box 3001
Maraylya NSW 2765

PUBLISHER

Timber Media Australasia Pty Ltd

EDITORS

Nicky Ainley
Donyale Harrison
Jess Hockridge
editors@timberandforestryenews.com

ADVERTISING

Campbell McInnes // +61 (0) 406 223 007
campbellm@timberandforestryenews.com

ACCOUNTS

Chris Parker // +61 (0) 413 710 203
cparker@ttnews.com.au

SUBSCRIBE

www.timberandforestryenews.com



The information contained in this publication has been obtained from sources assumed to be reliable. However, the publishers disclaim all warranties as to the accuracy, completeness, reliability or adequacy of the information displayed. Opinions expressed in Timber & Forestry enews are not necessarily those of directors or the Timber & Forestry enews team. We do not accept responsibility for any damage resulting from inaccuracies in editorial or advertising. The publishers are therefore indemnified against all actions, suits, claims or damages resulting from content in this publication.

CLASSIFIED ADVERTISING

EMPLOYMENT

LATEST JOBS:

- Wood Machinist
- Technical Sales Manager
- Harvest & Rooding Manager
- Estate Manager
- Account Manager

Click this link to advertise online...

ADVERTISING PACKAGES

PACKAGES:

Click this link to learn about advertising packages...

PRODUCTS & SERVICES

BUY AND SELL - New and Used Machinery/Equipment

Click this link to advertise here & online...

ADVERTISING RATES

DISPLAY AD RATES

FULL PAGE: \$540
297mmH x 210 mmW

HALF PAGE: \$320
Vertical • 256mmH x 93mmW
Horizontal • 125mmH x 190mmW

THIRD PAGE: \$240
Horizontal • 73mmH x 190mmW

QUARTER PAGE: \$210
Vertical • 125mmH x 93mmW
Horizontal • 63mmH x 190mmW

BANNER ADVERTISING PACKAGES

• PREMIUM PACKAGE:

- FRONT PAGE publication module, email and website modules
- Front page module • 68mmW x 45mmH
 - Top email banner • 1200pxW x 145pxH
 - Home page website banner • 1000pxW x 120pxH

• STANDARD PACKAGE:

- PAGE 6 (or similar) module, email newsletter and website module
- Module • 93mmW x 63mmH
 - Email module • 336pxW x 336pxH
 - Website module • 720pxW x 744pxH

CLASSIFIED ADVERTISING

JOB / BUY & SELL ADS: ONLINE & IN PUBLICATION
720pxW x 744pxH

TERM DISCOUNTS

12 WEEKS: 7.5% 24 WEEKS: 10% 48 WEEKS: 15%

All pricing is excluding GST and based on a weekly booking. Overseas bookings are exempt from GST.

DEADLINES

Display ads: Book by 9.00am Tuesday prior to publication.

Supplied artwork: 12noon Tuesday prior to publication.

Supply hi-res jpg or pdf to our specifications. This is a digital publication, therefore **NO crop marks or bleed is required.**

Classified advertising: JOB ADS ARE COMPLETED ONLINE.

Go to www.timberandforestrynews.com/post-a-job/ to place a job vacancy. **Book by 12noon Tuesday prior to publication.** Job ads are for individual positions. If more than one position is to be advertised, separate ads will need to be created and advertised accordingly.

BUY & SELL ADS ARE COMPLETED ONLINE. Go to www.timberandforestrynews.com/product/buy-sell-advertisement/ to place an ad. **Book by 12noon Tuesday prior to publication.**

PAYMENT TERMS

New clients invoiced on booking. Existing clients 14 days. All other standard Terms & Conditions apply.

CONTACTS

Media releases and editorial:

Nicky Ainley // Donyale Harrison // Jessica Hockridge
e: editors@timberandforestrynews.com

Display ad bookings:

Campbell McInnes // e: campbellm@timberandforestrynews.com

Accounts:

Chris Parker // e: cparker@ttnews.com.au

Have some news to share?

Send media releases, news stories, events, any timber and forestry news related information with us anytime to Nicky, Donyale and Jess -

editors@timberandforestrynews.com

timber
& FORESTRY *e*NEWS

Contact Nicky,
Donyale or Jess today...