

DELIVERED
WEEKLY TO
15,200
GLOBAL
READERS*

Like and
follow us on



ISSUE 791 // February 22, 2024

timber & FORESTRY *e*news

The Independent Hardware Group Expo 2024, a roaring success!

COVER STORY P 3



TimberTrader
news

**subscribe
now**

for your printed magazine

**NEED CREATIVE
HELP?**

We have an experienced,
in-house, artistic team
who can deliver polished ads,
promotions, brochures
and more.

ENQUIRE TODAY

**Responsible
Wood** RW/1-10-1

To find certified
organisations or
wood products
on our database...

Click here.

**Wood
Solutions**
design and build

www.woodsolutions.com.au

**ALL UNDER
ONE ROOF**

- ◆ IR SUPPORT
- ◆ TRAINING
- ◆ EMPLOYMENT
- ◆ WHS
- ◆ COMMUNITY

NTHA
NATIONAL TIMBER &
HARDWARE ASSOCIATION
1800 822 621

Australian apprenticeships under review

A long overdue review of the incentive system for Australian apprenticeships.

THE Australian Government has announced a review into the effectiveness of the current incentive system and complementary services in promoting the initiation and completion of apprenticeships and traineeships across Australia. This review is welcomed and supported by the Independent Tertiary Education Council Australia (ITECA). ITECA was formed in 1992. ITECA is the peak body representing independent providers in the skills training, higher education, and international education sectors.

The Australian Government's strategic review of the Australian apprenticeships incentive system (AAIS) is overdue. Troy Williams, ITECA Chief Executive said,

"This review is timely and necessary, given the significant decline in apprentice and trainee commencements over the past year across sectors including construction, manufacturing through to the healthcare, retail and tourism sectors."

Apprenticeships cover so many industries including



1

1/ Troy Williams, Chief Executive of the Independent Tertiary Education Council Australia



2

2/ Apprenticeships are not just about study but also about mentoring and helping new people build the skills that are invaluable to the industry. Image: shutterstock

both the timber and forestry industries. With many skills being dependant on apprenticeships, it is essential that these programs do not continue to diminish otherwise over time the workforce in these industries will drop drastically. For timber and forestry, the apprenticeships include agriculture, flooring, joinery, furniture, carpentry, and forestry.

ITECA has expressed its appreciation for the government's effort to evaluate the effectiveness of the current incentive system and complementary services in promoting the initiation and completion of apprenticeships

and traineeships. This evaluation is crucial, especially considering the success of the Boosting Apprentice Commencements (BAC) and Completing Apprenticeship Commencements (CAC) initiatives that were seen as financially unsustainable by some stakeholders.

"Incentives are appealing to employers and have been shown to boost commencement, as well as increase completion rates when properly targeted, but they come with significant costs," Mr Williams said.

As the review progresses, ITECA hopes it will lead to implementing sustainable,

long-term solutions that offer employers certainty in workforce planning.

"It's essential for employers to feel confident and have the certainty that the support available now will remain in place when they are looking to employ their second and third apprentice," Williams emphasised.

Recent data from the National Centre for Vocational Education Research indicates that independent providers played a pivotal role in the apprenticeship and traineeship ecosystem, supporting 51.7% of all apprentices and trainees in training as at of 30 June 2023.



THE CHOICE IS YOURS.

Following the awarding of a Global GreenRate Level A certification, MicroPro Wood Treatment Technology has recently been awarded a GoldHEALTH rating with its recently published Global GreenTag Level A Product Health Declaration™ (PHD™).

The GreenTag PHD is the first health transparency tool in the world to assess human health concerns directly, rating the health impacts of a final product – and not just the hazards of a product's ingredients.

For more information call us now on 1800 088 809.



MicroPro® is a registered trademark of Koppers Inc. or its subsidiaries. MicroPro® timber products are produced by independently owned and operated wood preserving facilities. © 2019 Koppers Performance Chemicals Australia Pty Ltd. Global GreenRate, GoldHEALTH, Global GreenTag and GreenTag PHD are registered trademarks operated under licence by Global GreenTag Pty Ltd.

Report from the Independent Hardware Group Expo

By NICKY AINLEY

THE Queensland Gold Coast is known for many things however last week it was all about hardware as more than 2,000 delegates descended on the location for the annual Independent Hardware Group (IHG) Expo.

Little beach-time was had during the three-day event which saw members of IHG join the executive and corporate team and a number of suppliers for the yearly event.

Kicking off on Monday, February 12th, members were treated to Point-of-Sale training as the first of the sessions got underway at the Star. Following the last of the registrations, group members were then invited to attend a number of afternoon sessions which focussed on sale margins and marketing. The first night was an opportunity for delegates to come together for welcome drinks hosted at the Star, a wonderful event to get the three-day expo underway.

Tuesday morning focussed in on the business end of the event with the IHG hosting their business session for members and suppliers. Thousands filled the auditorium at the convention centre to hear from the heads of the company along with



Delegates and suppliers networking during a break between sessions.

a keynote speaker. Metcash CEO Doug Jones was the first to speak. He addressed the room saying their purpose continues to be 'championing successful independents.' IHG sits within the Metcash group which also owns IGA, Foodland, Cellarbrations and more.

"Everything we do is with that in mind and that is our strategy." Jones highlighted that the group is 'so much more than just a good wholesaler'.

Along with discussions surrounding IHG's strong position within the Metcash

group, Jones explained some recent acquisitions that have further strengthened their hardware position.

Metcash only recently made the acquisition of the South Australian Bianco construction and Victorian-based Alpine Trusses, considered to be one of the largest frame and truss operations in the country. Jones told the packed auditorium he believed these acquisitions would only further strengthen Metcash's (and IHG's) position as a power player in the hardware sector.

"We are looking to grow

Cont P 4

The united voice for Australia's forest industries



"PURPOSE IS TO CONTINUE TO BE 'CHAMPIONING SUCCESSFUL INDEPENDENTS'"

0408 404 764
enquiries@ausfpa.com.au
www.ausfpa.com.au





1 & 2 James Hardie and ITI Australia were two of the 220 suppliers present at the IHG Expo 2024.



From P 3

at Metcash and we want to continue to grow within the building market,” Jones continued. “Our first choice will always be independents, company owned stores and joint ventures.”

Anette Welsh, CEO of the

Independent Hardware Group was next to take the stage to a welcoming crowd saying she was excited to spend the week with members and suppliers as the nation marks 65 years of Mitre 10 in 2024.

The co-op based group

originated in 1959 with 8 founding members who joined together to build their collective power while maintaining their independence as businesses. It’s an ethos that has continued with the group which now sports 800 hardware and professional tool stores operating under Mitre 10, Home Hardware, Thrifty Link, True Value and Total Tools.

While bringing the group up to speed on the latest and the future for IHG, Welsh confirmed the group maintains its position as the second largest hardware group in Australia.

“We are continuing to help Australian’s build great houses.”

The Tuesday business session wrapped with a keynote speaker which was followed by lunch before the doors to the highly anticipated expo opened. The day concluded with the Independents Dinner.

More than 220 suppliers attended the expo. Each supplier was showcasing their latest and greatest and offering expo only deals to the members in attendance

over a day and a half. From racetracks and Mitre 10 building blocks, through to kitchen displays, outdoor garden settings, plants and even the giant Dulux dog; suppliers went above and beyond as members spent time networking and wheeling and dealing. With the likes of ITI and James Hardie on site, the timber and building industries were well represented.

The three-day event wrapped up with the National Awards held once again at the conference centre. Hosted by Katriona Rowntree and Tim Campbell with entertainment by Paulini, top members and suppliers were honoured at the awards. Hume Doors took out the honour for the Build Supplier of the Year, Dulux picked up first place for finish and exterior Supplier of the Year, and Makita were also awarded at the event along with a number of IHG stores who have achieved an incredible amount in the past 12 months.

On the cover: The IHG Expo 2024 had a highly anticipated day and a half floor space for suppliers to showcase their products and offers for delegates..

NTHA CAN

TRAIN AND UPSKILL YOUR EXISTING TEAM MEMBERS

- ✓ Nationally recognised qualifications and training
- ✓ Specialist industry trainers

STRENGTHEN YOUR TEAM

RETAIL, SALES, BUSINESS, SUPPLY CHAIN OPERATION AND LEADERSHIP QUALIFICATIONS

(RTO 5343)
1800 822 621
ntha.com.au

Strengthening alliances for Responsible Wood

RESPONSIBLE Wood Sustainability Manager, Matt de Jongh, recently visited Brisbane to strengthen partnerships and advocate for sustainable practices in the timber industry. His agenda included meetings with key industry players and participation in the Sustainable Industrial Manufacturing Asia Pacific Conference (SIM-PAC) 2024.

One of the notable meetings during Matt's visit was with Responsible Wood certificate holder Platinum Timber, a leading timber supplier committed to responsible and sustainable practices. Matt discussed the importance of Responsible Wood certification with Platinum Timber's Director, Peter Kennedy. Peter emphasised the value of Responsible Wood certification, stating, "At Platinum Timber, we believe in the significance of responsible wood sourcing, ensuring that our products contribute to a sustainable and eco-friendly future."

Platinum Timber has been a frontrunner in promoting environmentally conscious



1/ **Platinum Timber meeting (L-R):** Damon Goodwin, Internal Sales, Ben Kennedy, Area Manager, Jackie Goodwin, Director, Brett Beanland, Area Manager and Matt de Jongh, Sustainability Manager, Responsible Wood.

2/ **Rothoblaas meeting (L-R):** Sebastian James, Technical Salesman, Rothoblaas, Mick Stephens, CEO, Timber Queensland, Simon Dorries, CEO, Responsible Wood and Matt de Jongh, sustainability manager, Responsible Wood.

timber sourcing, and their dedication aligns with Responsible Wood's mission to ensure the responsible management of forests worldwide. Jonathan Tibbits, Responsible Wood, Marketing and Communications Manager, emphasised the value of collaborating with an organisation such as Platinum Timber, stating "Platinum Timber not only promote the sustainable and responsible use of timber, but have demonstrated this for many years." More information about Platinum Timber can be found on their website: [Platinum Timber](https://www.platinumtimber.com.au).

Furthermore, Matt actively participated as a speaker in the SIM-PAC conference in Brisbane. He highlighted the pivotal role of responsible wood practices in industrial manufacturing processes. Matt expressed his enthusiasm, stating, "Conferences like SIM-PAC provide a platform to share insights and innovations in sustainable manufacturing. Responsible wood sourcing is an integral part of creating a more environmentally friendly

Cont P 6

Looking for certified organisations or products?

Search our database to find Responsible Wood certified forests, businesses, wood products and chain of custody certified organisations.

responsiblewood.org.au



From P 5

industrial sector."

The SIM-PAC conference, as detailed on their website SIM-PAC, serves as a nexus for professionals in sustainable industrial manufacturing, facilitating discussions on eco-friendly practices and cutting-edge technologies.

During his visit, Matt and CEO of Responsible Wood, Simon Dorries also met with Sebastian Jaimes from Rothoblaas, a global leader in providing sustainable solutions for timber construction. The meeting aimed to foster collaboration and exchange ideas on advancing sustainable



SIM PAC (L-R): Marianne (Ria) Jago, Sunshine Coast University, Clarissa Brandt, Timber Queensland, Rob Fowler, Partners in Performance, Birgit Tegethoff, Business Finland, and Matt de Jongh, Responsible Wood.

practices in the timber industry. Simon shared his thoughts on the meeting, stating, "Engaging with industry leaders

like Rothoblaas is crucial for driving positive change. Together, we can elevate the standards of sustainability in

timber construction."

Sebastian echoed the sentiment, emphasizing Rothoblaas' commitment to developing innovative solutions that prioritize environmental responsibility. More information about Rothoblaas can be found on their website: Rothoblaas.

Matt's visit to Brisbane showcased the growing momentum in the timber industry towards responsible and sustainable practices. These partnerships and engagements underscore the collective commitment to creating a more environmentally conscious future for the timber sector.

Port Lincoln's iconic jetty refurbished

PORT Lincoln in South Australia recently refurbished their town jetty which is an iconic part of their town history. The Port Lincoln Council would like to promote sustainability in their community and has decided to open up an application process for interested parties to repurpose sections of the salvaged jetty timber.

Applications opened to private individuals, businesses and community groups on the 12th of February. Applications can be submitted until 12 noon, Tuesday 12th March 2024. The Mayor of the Port Lincoln Council, Diana Mislov

said, "We've had considerable interest from community members keen to acquire some of the town jetty timber."

The salvaged timber cannot be used as firewood due to the treatments the jetty timber has undergone, and it also cannot be used in the construction of buildings as it is not certified for structural use. The council encourages interested parties to repurpose



Port Lincoln's iconic jetty timber ready to be salvaged and given a new purpose.

the jetty pieces into community art, household features, furniture, and other creative outlets.

new life and purpose in various community and individual projects. The community is

to the timber and forestry industry and it is definitely on Mayor Diana Mislov's mind as she shared that, "Encouraging the reuse and repurposing of this salvaged timber not only promotes sustainability but also ensures that this valuable resource doesn't go to waste. It can find

Sustainability is important

Cont P 11



County Helicopters is your premier choice for specialised aerial applications in forestry, utilising both helicopters and drones to cater to your specific needs.



P: 0417 442 980
ashley@countyhelicopters.com.au
www.countyhelicopters.com.au

PREMIUM QUALITY STRUCTURAL FRAMING
TIMBER, LVL AND I-JOIST
PRODUCTS.




www.vigidas.com.au phone: +61290984323 sales@vigidas.com.au





FEBRUARY

28: Modern Tree Breeding – A quiet achiever with huge upside – Webinar. In this webinar Dr Josquin Tibbits will highlight major innovations adopted by tree breeders over the past 25 years and discuss impacts on plantation productivity and quality, as well as look forward to the current innovation space and its potential future impact in the sector. Visit <https://www.forestry.org.au/events-2/>

MARCH

5-6: ABARES Outlook 2024 – Hyatt Hotel Canberra and online. The theme of this hybrid conference is 'Shaping the Future: Opportunities, risks, and resilience' and topics include debt, biosecurity and climate change impacts. The opening session focuses on the national and global economic outlook, including expert speakers from Westpac and the OECD. To register visit https://www.agriculture.gov.au/event/abares-outlook?trk=organization_guest_main-feed-card-text

18-19: FTMA National Conference – Geelong, VIC. The conference is designed to expand members' perspectives by thinking beyond the conventional. Topics covered: understanding future housing scenarios, highlight potential threats to our market position, provide strategies for navigating the industrial environment,

offer advice on defending your business from work cover claims, and shed light on future framing possibilities. Registrations now open at <https://conference.ftmanews.com/register-now/>

MAY

1-2: Sydney Build Expo – Sydney. Sydney Build is the only event in Australia to offer 300+ accredited presentations, 500+ exhibitors and incredible networking opportunities for all of Australia's construction, architecture, engineering and infrastructure industries. For more information, visit www.sydneybuildexpo.com

1-2: International Forest Investment Conference – New York City. For more information, visit www.getfea.com

20-21: IV International Forest Business Conference – Sheraton Sopot Hotel, Poland. A two-day conference on megatrends that shape responsible forest and wood industry investments. The conference aims to bring together leading timberland investment management organizations, investors interested in forestry asset class and sustainable wood industry representatives in order to exchange and share experiences and ideas about new forest business frontiers. Register at www.fba-events.com or contact rafal@forest-analytics.com

22-23: Wood Transport &

Logistics 2024 – Rotorua, NZ and online. With an international focus and a rich understanding based in the forestry expertise of New Zealand, this regular conference delivers insights into wood handling and transport innovations, automation, log scheduling and logistics being employed by leading forestry, wood harvesting and log transport companies. Topics include transitions to new electric, hydrogen and diesel-hybrid powered heavy vehicles, including the integration of truck automation and platooning, as well as new innovations in log measurement, scheduling and logistics. For more and to register, visit <https://innovatek.co.nz/event/wood-transport-logistics-2024/>

JUNE

14: NTHA Vic/Tas State Awards. More details to follow. Sponsorship opportunities available. Contact alicia@ntha.com.au

JULY

27: NTHA Qld State Awards. More details to follow. Sponsorship opportunities available. Contact alicia@ntha.com.au

AUGUST

9: NTHA SA State Awards. More details to follow. Sponsorship opportunities available. Contact alicia@ntha.com.au

12-13: Timber Construct

Conference – Rydges, Melbourne. The Timber Offsite Construction Conference and Exhibition has been rebranded as the Timber Construct Conference to encompass the full spectrum of timber building. The conference provides an invaluable forum to address pressing challenges and opportunities influencing timber's role across the built landscape. Technical sessions will cover research updates, emerging products, building code enhancements, and best practice case studies. For more information, visit <https://timberoffsiteconstruction.com>

SEPTEMBER

13: NTHA NSW State Awards. More details to follow. Sponsorship opportunities available. Contact alicia@ntha.com.au

23: Latin America Forest Investment Conference – Porto Alegre, Brazil.

24-25: International Woodchip and Biomass Trade Conference – Porto Alegre, Brazil.

25-27: Field Trip – Rio Grande do Sul State, Brazil.

OCTOBER

11: NTHA WA State Awards. More details to follow. Sponsorship opportunities available. Contact alicia@ntha.com.au

22-23: International Woodchip and Biomass Seminar and Networking Event – Singapore.

A CUT ABOVE...

Do you crosscut timber packs at ± 1 mm accuracy?

Or cut structural timber, panel products (MDF & LVL), paper rolls?

Or produce pallet dimensions or studs on fixed lengths?

HOLTEC has a solution for you!

Our scope of supply:

- Mobile and stationary chainsaws
- Timber crosscut stations
- Log cutting stations
- Circular saws

- Mechanisation
- Sorting lines
- Scanning and optimising systems
- Special systems



For more information contact:

HOLTEC
YOUR PARTNER FOR THE PERFECT CUT

Ph: +64 9 416 8294 // Fax: +64 9 416 8296
Email: sales@holtec.org // Web: www.holtec.org

Diana Hallam announced as AFPA's new CEO

THE Australian Forest Products Association (AFPA) is pleased to announce that experienced government relations professional Ms Diana Hallam has accepted the Board's offer to become the Association's new permanent Chief Executive Officer.

Ms Hallam has a long and distinguished career working at senior levels of the Australian Public Service, as Chief of Staff to a former Deputy Prime Minister and in other senior political advisory and corporate roles with a focus on infrastructure, transport and agriculture.

AFPA Chair Stephen Dadd commended the Board's recruitment decision, "After a lengthy and thorough recruitment process, we are very pleased to announce that Diana Hallam

will become AFPA's new CEO and take the reins of Australia's peak national forest products industry body, with the support of the AFPA membership, our Board of Directors and team of expert staff.

"Diana's breadth of experience across senior levels of government, politics and the corporate sector will stand her in excellent stead to manage the challenges and opportunities facing our sector. On behalf of the Board, staff, and membership, I congratulate Diana and welcome her to the team."

Ms Hallam will leave her current role as a First Assistant Secretary in the Australian Government Department of Agriculture, Fisheries and Forestry to commence as AFPA CEO on 12 March 2024. Diana




Diana Hallam, AFPA's new permanent CEO.

served as Chief of Staff to Deputy Prime Minister and Minister for Agriculture, the Hon Barnaby Joyce MP from 2014 to 2017 and prior to that occupied senior roles at both Toll Group and Singapore Airlines.

Diana holds a Bachelor of Arts (Hons) and a Master of Science and Technology (Aviation) from the University

of NSW, a Master of International Law from the Australian National University, a Graduate Diploma of Professional Communications from the University of Southern Queensland and is a graduate of the Australian Institute of Company Directors.

Ms Hallam said she was thrilled to be offered the opportunity to become AFPA's CEO, "I look forward to meeting AFPA's membership and working with everyone across the forest products supply chain. The industry is at the forefront of key policy challenges from climate change to economic development and sovereign capability. I look forward to getting out on the ground and talking to stakeholders about the industry's issues and opportunities."



BUILD BETTER WITH ATS

At ATS Building Products, we understand that everything has to line up. Great projects – no matter the size – require a mix of quality, timeliness, & competitive pricing.

You can count on our team to make sure your projects run efficiently and deliver value from start to finish. We are driven to help you do your best work.

Right products. Right time. Right price.

Visit us in person or online at www.ATSBP.com to learn more about how we can help you build better.

NSW	NSW	NSW	QLD	VIC	SA
157 Briens Road Northmead, 2152 t. 1800 577 551	17-23 Longfeld Street Lansvale, 2166 t. 1800 577 551	4B/400 Moorebank Ave Moorebank, 2170 t. 1800 577 551	Unit 3 / 153 Rossmanns Rd Stapylton, 4207 t. (07) 3667 8217	372 Lower Dandenong Rd Braeside, 3195 t. (03) 9034 3994	48 Lipson Street Port Adelaide, 5015 t. (03) 9034 3994

Anniversary of Cyclone Gabrielle: reflecting on a challenging year

THE Eastland Wood Council – Te Kaunihera Pororakauo Te Tairāwhiti (EWC) is reflecting on the impacts of the severe weather events of 2023, as the anniversary of Cyclone Gabrielle is marked.

Chief Executive, Philip Hope, says their thoughts first and foremost are with the community in Tairāwhiti who were deeply affected.

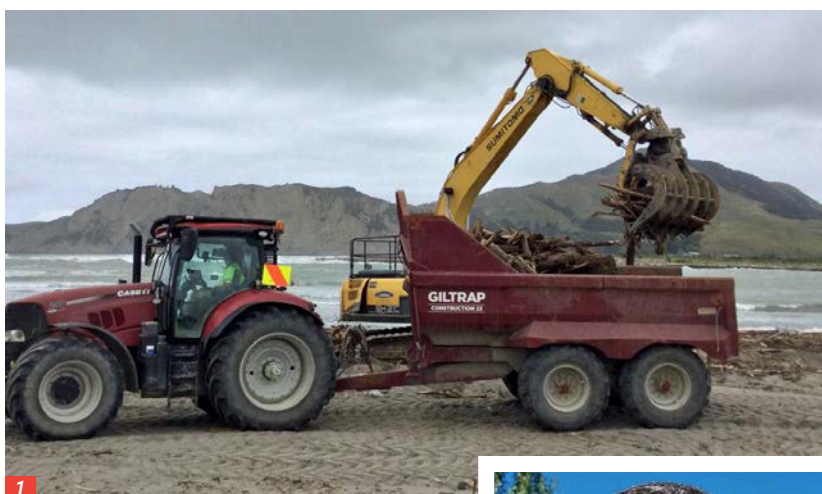
“The devastation from two significant weather events so close to each other left so many deeply impacted. These people are our neighbours, this is our home, and to see our community hurting was heartbreaking.

“In the immediate aftermath, our members’ staff who were unable to return to the forests got stuck in, helping to remove silt and debris for whānau and neighbours, and mucking in where they could.

“It’s only a drop in the bucket of the support our community has needed in the 12 months since Cyclone Gabrielle. We need to keep going and will continue to support the recovery with the skills and equipment we have.

“The industry has been continuously taking steps towards seeking out new,

“GRATEFUL FOR THE ONGOING HARDWORK OF STAFF AND CONTRACTORS



1

1/ Removing slash in Tolaga Bay: the EWC is grateful for the ongoing hard work of staff and contractors.

2/ Warren Rance, EWC Chair: members are committed to collaborating with partners to apply carefully considered, science-based approaches to land management.

innovative ways to build our sustainability and mitigate risks in forests.

“For example, some of EWC’s forestry members are voluntarily undertaking increased mapping and site-specific risk assessments on high-risk sloped areas, to be able to make informed replanting decisions that consider land stability impacts,” Mr Hope explains.

“Our forestry members also pledge to uphold EWC’s Code of Principles, to take accountability as responsible members of the Tairāwhiti community – and these actions are part of their commitment to this.”

EWC Chair, Warren Rance, is grateful for the ongoing hard work of staff and contractors.

“They are committed, they are resilient, and have continued to work hard through this difficult year – even when they were personally impacted by the



2

cyclones. At times, there has been uncertainty, and our teams have kept going throughout it all to maintain our forests and regional infrastructure.

“Caring for the people who care for our forests is a priority too. We’ve introduced Te Kawa a Tāne in partnership with WorkSafe, iwi and other government agencies in the past year. This initiative to improve our culture and safety is paramount for the future, and it’s directly related to the Ministerial Inquiry into Land Use.”

Mr Rance acknowledges there is still work to be done in other areas too – and members are 100 per cent committed to collaborating with partners to apply carefully considered, science-based approaches to how

land is managed.

“One of those pieces of work is developing long-term mitigation strategies for land at risk of failure, and for the existing forests that present an ongoing risk of debris mobilisation, including over the next harvesting rotation.

“The risk exists because of the unique challenge our highly erodible soil presents. Our region is erosion-prone because of a combination of geology, slope steepness in many areas, landscape responding to native forest removal 150 years ago, high tectonic uplift, and weather patterns.

“But we can’t address these risks alone. Addressing this matter requires collaboration with our partners, and we need them to keep coming to the table with us to map the way forward to achieve the meaningful outcomes our community deserves,” Mr Rance adds.

Plans are under way for the next 12 months to continue building on the work of the first year, in partnership with iwi, mana whenua, landowners and the Gisborne District Council.

“We are focused on advocating for solutions, including wood processing in the region, to future proof our industry and develop sustainable long-term strategies for land use in Tairāwhiti. We look forward to continuing our work with leaders, including central and local government, to respond to what our community needs from us in the coming year, and beyond,” concludes Mr Hope.

\$900k in fines handed out in NSW

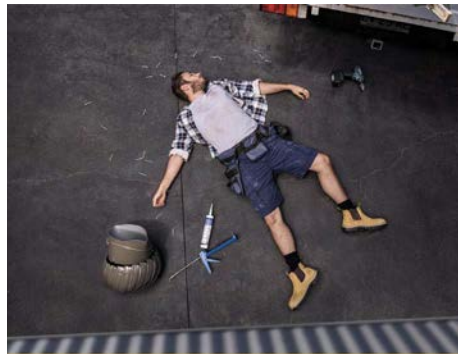
ALMOST \$1 million in fines have been issued at the halfway point of SafeWork NSW's 12-month blitz on falls from heights.

The 'Working at Heights in Construction' campaign followed a concerning rise in the number of serious injuries and deaths attributed to falls from heights, resulting in 17 people killed between 2018 and 2022.

Working from heights includes working from roofs, scaffolding, ladders, flatbed trucks, voids inside homes and buildings and harvesting from heights. SafeWork NSW states that most serious and fatal falls occur from heights between 2.1 metres and 4 metres. SafeWork has named several industries where the injuries appear to be the most concentrated including: construction, manufacturing,

transport, postal, warehousing and agriculture. With harvesting being one of their listed areas, the forestry and timber industry will be one of the industries under the microscope.

Since May 2023, SafeWork Inspectors have visited 1,218 worksites resulting in 1,499 Improvement Notices, 727 Prohibition Notices and 352 Penalty Notices amounting to \$972,000. That's 2,578 notices total, with an average of 2 notices per site visited. This is a warning to any work sites that have not been visited to take this opportunity to look at the requirements and



Do work safety right, at any height

Falls from 2 to 4 metres can be devastating and often fatal.

check over your work site and ensure it is up to code. Make the effort, not just to avoid expensive fines but for the safety of those working.

Head of SafeWork NSW Trent Curtin shared,

"As we pass the halfway point of SafeWork's 'Working

at Heights in Construction' compliance blitz it is important to note that falls from heights is still the number one cause of traumatic fatalities on NSW construction sites."

The blitz has seen Inspectors visit several commercial and residential sites across the state, as well as conducting high visibility checks in manufacturing and warehouse industries in addition to inspections in the transport industry leading up to a busy Christmas period.

During their field work, Inspectors gauged that 65 per cent of industry is using the highest form of safety measures as their first choice including the use of fall prevention devices, such as roof guardrails and scaffolding, rather than fall arrest systems

Cont P 11



Develop our future workforce

ForestWorks is an industry-owned not-for-profit organisation offering services to support the skills development of the forest, wood, paper, timber and furnishing industries.

ForestWorks works with industry, government and the education and training sectors to improve skills standards and qualifications and support the development of forestry-related industries, their people, and enterprises.

To find out more:

Email: forestworks@forestworks.com.au
Phone: 1800 177 001
www.forestworks.com.au

Do you have SOMETHING to say?

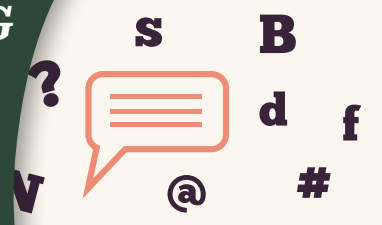
Share observations, comments, opinions, by email and, subject to normal editorial rules, your feedback will be published.

Send media releases, news stories, events, any timber and forestry news related information anytime to Nicky, Donyale and Jess at the following dedicated email address -

editors@timberandforestrynews.com



Hello!



Dear Editor



From P 10

such as harnesses.

Trent Curtin explained that “While it is encouraging that 65 per cent of industry is using the highest form of safety measures, this means that 35 per cent are not and this needs to change. Otherwise, businesses run the risk of workplace accidents as well as fines and prosecution.

“During one worksite blitz a SafeWork Inspector noted a worker who was not connected to a harness system while working on a roof. When

questioned as to why they were not connected, the worker reasoned that they had been roofing for 30 years without an incident.

“Attitudes like this will eventually result in a workplace accident or death. This is simply unacceptable. SafeWork Inspectors will not hesitate to stop work on site, issue fines and consider prosecution against businesses and individuals disregarding the rules.”

SafeWork will continue to prioritise the safety of

workers at heights in 2024 with continuing inspections, starting off with a blitz on the safe installation of rooftop solar panels this month.

Contractors and builders are obligated to protect workers by identifying height risks and taking steps to control these hazards as far as reasonably practical by implementing higher order controls.

If you are a small business owner in NSW, SafeWork is offering a \$1,000 SafeWork small business rebate designed to help your business

purchase safety items to improve work health and safety for you and your workers. Click here to see more information about the rebate.

Workers who have concerns about workplace health and safety can anonymously contact SafeWork on 13 10 50 or through the ‘Speak Up Save Lives’ app.

More information relating to working from heights including relevant laws, pocket guides, instructional videos and checklists can be found via the SafeWork website.

From P 6

often keen to retain a piece of history, and incorporating the jetty timbers and salvage items into community art or household features will make for interesting talking points in the future – a tangible way of keeping our history alive.”

The timber itself has been

graded into 4 categories from excellent to poor and council notes the importance of people being cautious when handling the timber due to leftover metal pins, nails and bolts. For successful applicants the pricing is broken down. Community groups will not be asked to pay for the timber. Individuals and businesses

will be asked to pay based on the quality of the timber they select.

Council has an open opportunity for community groups, individuals and businesses to come and take a look at the timber on Friday 23 February from 9am-3pm or Saturday 24 February from 10am – 3pm. The Depot is

located at 33 Bel-Air Drive, Port Lincoln.

For more information and to submit an application, click here. Applications will be reviewed and the Council CEO will be the final sign off. Applicants will be notified of their outcome when their application has been processed.

arxada

IS IT SAFE TO USE PRESERVATIVE - TREATED WOOD FOR MY RAISED GARDEN BED?

Yes!

TANALITH® E Copper Azole treated timber is safe to use around fruit and vegetables!

TRUST

Tanalised®
Ecowood®

PROVEN WOOD PROTECTION

Tanalised, Tanalith, & Ecowood are registered trademarks of Arxada @ 2023

Rubber ... from the Spanish Court to pneumatic tyres

RUBBER trees (*Hevea brasiliensis*) are tall deciduous trees growing to a height of up to 45 metres in the wild, but cultivated trees are usually much smaller because drawing off latex restricts growth. The inner bark oozes latex when damaged.

Native to the Amazon and Orinoco river basins of Brazil, Venezuela and Colombia, rubber trees were originally called caoutchouc, from the indigenous cauchy, or 'weeping wood'. The rubber tree is a member of the Euphorbiaceae (spurge) family. Its creamy latex is a suspension in water of about 50 per cent rubber ready to be excluded and quickly coagulate to seal wounds. In fact, when incisions are made to tap latex, anti-coagulant chemicals are applied to keep the latex running.

Rubber trees take between seven and ten years to deliver their first latex harvest. Harvesters make incisions across the latex vessels, just deep enough to tap the vessels without harming the tree, and the latex is collected in small buckets. This process is known as 'rubber tapping'.

As latex production declines with age, rubber trees are generally felled when they reach the age of 25 to 30 years. The earlier practice was to burn the trees, but in recent decades the wood is the



- 1/ Rubber trees are tapped for their latex by making small cuts and inserting anti-coagulant.
- 2/ Modern car tyres... by the late 1930s a million tons of crude rubber was exported annually from South East Asia.

basis of a substantial furniture manufacturing industry, notably in Malaysia.

In 1531 Aztecs caused a stir at the Spanish Court with previously unknown bouncy rubber balls. By the 1770s the British were using coagulated Hevea latex for rubbing out pencil marks (hence the name 'rubber'), and in London little cubes of 'India rubber' fetched three shillings each – a small fortune at the time.

For centuries tribes in the upper Amazon basin had been

temperature. This 'vulcanised' rubber appeared everywhere in pumps, steam engines, combs and corsets.'

Demand for rubber soon far exceeded supply. The price rocketed, leading to a disorderly Amazon 'rubber rush' of men staking claims and over exploiting wild trees. In 1876, Sir Henry Wickham shipped a consignment of 70,000 rubber seeds from Brazil to Kew Gardens. From there, seedlings were distributed to British colonies in Asia, where they were propagated with great success – the ancestors of today's huge rubber plantations.

Rubber hit the road in 1888 when John Boyd Dunlop patented the first successful inflatable rubber bicycle tyre. In the early twentieth century pneumatic tyres, rubber seals, gaskets, mats and hoses for vehicles gave rise to companies such as Firestone, Goodyear, Michelin and Pirelli.

By the late 1930s a million tons of crude rubber was being exported annually from South East Asia, and it was the single most valuable import into the United States. The occupation of most rubber plantations by Japanese forces in World War II prompted the urgent development of synthetic rubber from fossil fuels and their by-products. However, half of all rubber still comes from trees, grown most prolifically now in Thailand and Indonesia.

TALKING TREES



With the late JOHN HALKETT

Sponsored by Forestry Corporation of NSW

using rubber to mould shoes, and for waterproofing long before the 1820s, when the Scotsman Charles Macintosh used dissolved rubber to treat fabric for his famous rainwear.

Unfortunately, rubber straight from the tree cracks in the cold and becomes gummy in the heat. In 1839 Charles Goodyear discovered that 'cooking up' raw rubber with sulphur made it tough and resistant to extremes of



The largest manager of commercial plantations and native forests in NSW
Visit us at forestrycorporation.com.au

1075C



UNMATCHED PRODUCTIVITY. UNMATCHED RELIABILITY.

The Tigercat 1075C forwarder is unmatched in terms of productivity and reliability. Innovations like low-wide® and the hooked crane set Tigercat apart from the competition. The 1075C Forwarders now include the Tigercat built WideRANGE transmission.

Experience the Tigercat 1075C forwarder for yourself.



www.onetrak.com.au



www.tigercat.com



Scan to learn more

Researchers focus in on engineered timber

Construction shortfalls inspires a look into fast-tracking plantations.

CONSTRUCTION in Australia is currently outstripping the pace of timber production with how long trees take to mature and be ready for harvesting. This problem has only been exacerbated with the native logging bans. ABC suggested that the reserve timber supply in Australia could be exhausted in under 10 years.

The Australian Government has the new plantations grant which we covered in issue #790. This will not help in the immediate though as those trees will be 20-25 years away.

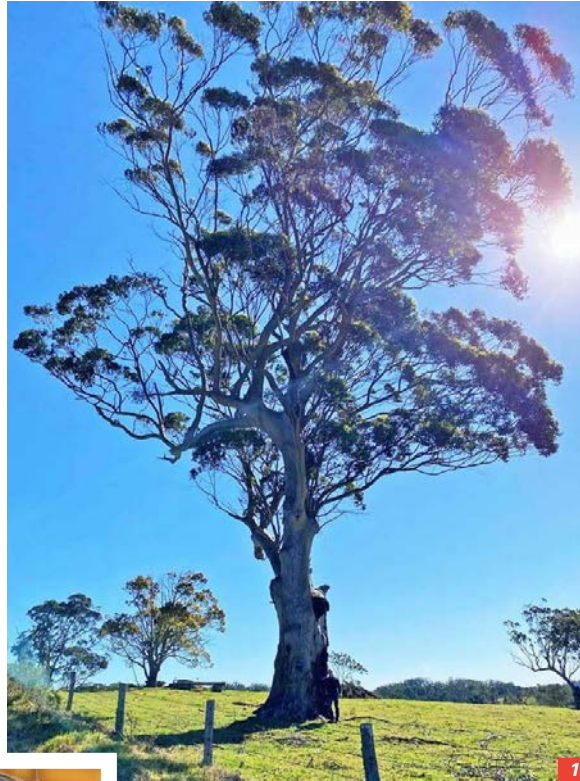
Experts from the timber and forestry industry are hoping to find help in a new native nursery. Darryl Outhwaite is the director of Form Forests and Environment in Albany, Western Australia. Form Forests and Environment grow native Australian

plants to be transferred to projects all over Western Australia for the purpose of carbon capture and revegetation.

The Cook government was one of the governments that has decided to ban native logging. Mr Outhwaite is experiencing an increase in demand for his seedlings in response has purchased Australia's first mechanised planting machine and has expanded his annual seedling care capacity from two million to three million.

However, most of the nurse's trees are bound for blue gum plantations and will end up in paper pulp mills.

Mr Outhwaite's new mechanical planter has already been engaged for the winter to help plant trees in plantations in Western Australia. "The planting machine will be doing 50 per cent of its work in the softwood pine estate this winter," he said. The softwood



University of Tasmania, Dr Louise Wallis, identified a possible solution already growing in Western Australia – the blue gum trees. "We're looking at what sawn-board products we get out of plantation blue gums. We have a lot of them in Australia, but currently something like 80 per cent of them, or more than 80 per cent, are destined for pulp," Dr Wallis shared.

Whilst experts are researching

the application of using blue gums for sawn-board products there is also a need for engineered timber products. Dr Wallis outlined the issue, "Because there isn't the supply available in native forestry sources, we've had to look at how you can generate other products such as engineered flooring, cross-laminated timber, or glue-laminated timber."

The research project into blue gums is being done in partnership with the Wespine softwood timber mill in Western Australia. The resource manager, Brad Barr, recognising the need for the mill to innovate and find new local sources like the blue gum or the demand for supply would need to be met by imports.

Source: ABC



1/ **The Blue Gum Tree that is under consideration for timber production.**

Photo: Mitch O'Mara

2/ **Darryl Outhwaite is expanding the capacity of his nursery in Albany to accommodate the increase in demand.**

Photo: Andrew Chounding

3/ **Dr Louise Wallis, Deputy Director of the Centre for Sustainable Architecture run by the University of Tasmania.**

Photo: University of Tasmania

hectares set aside to grow 50 million trees. However, these trees will not be ready for harvesting before 2040 leaving the issue of timber supply for the 2030's still a large problem.

The Deputy Director of the Centre for Sustainable Architecture run by the

“ POSSIBLE SOLUTION ALREADY GROWING IN WESTERN AUSTRALIA

ADVERTISING ONLINE... *just a click away!*

- Jobs board
- New/used equipment and machinery for sale
- Other products/services



*With just a few clicks, your business
can be seen on the industry's #1 WEBSITE.*

Timber & Forestry eNews offers a user-friendly online classified advertising platform for timber and forest industry businesses, and related businesses to promote job openings, machinery, equipment, and various products and services.

For further info, contact Campbell McInnes at campbellm@timberandforestryenews.com or visit timberandforestryenews.com/advertising

timber
& FORESTRY *e*NEWS

Forestry restoring access on weather damaged roads

In 2022, the NSW Government provided \$60 million in funding spread over three years towards the Forest Infrastructure Repair Program (FIRP) to fix flood-damaged roads, bridges and culverts and restore access for forest management and the broader community.

Road, bridge, culvert and causeway repairs are continuing at a fast pace across weather-impacted coastal state forests across New South Wales. Under FIRP, Forestry Corporation has this year completed several key road and bridge building projects.

Forestry Corporation maintains a network of forest roads and trails spanning 60,000 kilometres, which complements the public road network and provides access for community use, forest management and fire protection.

More than half of the state forest road network is located within areas that were impacted by flooding. Weather events damaged between 10,000 and 50,000 kilometres of forest roads prior to the NSW Government providing \$60 million in funding spread over three years in 2022 to fix flood-damaged roads, bridges and culverts and restore vehicle access for the broader community.

Forestry Corporation's Project Supervisor – Forest Infrastructure Peter Walsh



1/ **Blackbutt Road bridge has now been fully completed.**



2/ **Mountain Road was in need of a replacement bridge and the works have now commenced.**

said the funding specifically targets repairs to roads and infrastructure in flood-affected Local Government Areas (LGAs) and priorities are major access routes and bridges where significant damage has occurred.

“Restoring and improving vehicle access to the forest estate has been a major focus for Forestry Corporation and a considered approach has been taken to the planning and construction of road, bridge, culvert and causeway repairs with these major works creating employment and adding significantly to regional economies,” Mr Walsh said.

“Under the FIRP project, Forestry Corporation has worked to plan and complete a long list of projects in state forests and has now completed 125 projects under FIRP.

“To date 20 major bridges have been replaced, 14 major bridge replacements have been tendered, 25 landslips have been repaired, more than 1200-kilometres of road has been maintained or reopened, 12 quarries have been expanded, a further four quarry expansions are planned and 102 crossings have been

repaired

“A total of 115 projects are now under construction or in the planning or implementation stage across New South Wales,” he said.

Projects that have been completed or progressed in 2024 include:

Mid North Coast

- Bridge replacement on Blackbutt Road in Bulls Ground SF near Wauchope - Port Macquarie – Hastings LGA.
- Two bridge replacements on Frying Pan Road in Chichester State Forest - Mid Coast LGA.
- Completion of a major landslip repair on Pipeclay Road in Lansdowne State Forest near Wauchope – Mid Coast LGA.
- A tender was awarded to Green Construction & Management for the replacement of three bridges and one causeway crossing on Gearys Flat Road in Kippara State Forest near

Wauchope - Port Macquarie – Hasting LGA.

- A tender package has been released for crushing gravel in the Razorblades quarry in Kippara State Forest near Wauchope – Port Macquarie LGA.

South Coast

- A bridge replacement on Native Dog Creek on Clyde Ridge Road in Flat Rock State Forest near Batemans Bay has been completed – Shoalhaven LGA.
- A tender package for the replacement of two bridges on Goanna Road in East Boyd State Forest near Eden has been released – Bega Valley LGA.
- Construction of three bridges on Mountain Road and Ireland Timms Road in Nadgee State Forest near Eden has commenced – Bega Valley LGA.
- A tender package for the replacement of the Western Distributor and Lyons Road bridges in Currowan State Forest near Batemans Bay was released – Shoalhaven LGA.

Find out more about Forestry Corporation's FIRP projects [click here](#).

“**MAJOR WORKS
CREATE
EMPLOYMENT**”

Timber pricing: Global wood fibre markets

Hardwood fibre costs overtook softwood fibre in 2023.

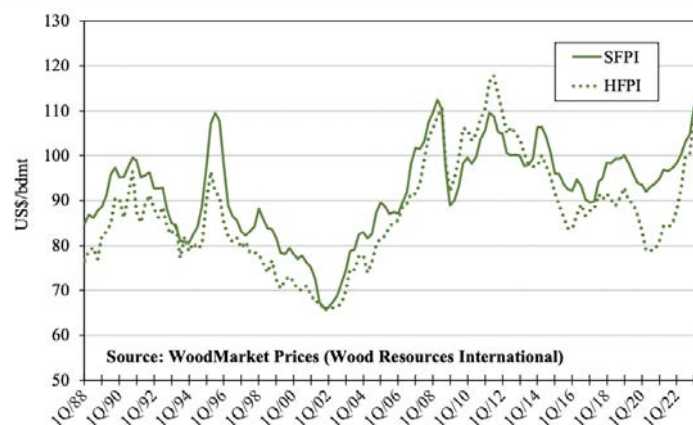
Part two of two.

IN Issue #790 the Russian lumber export market was examined in light of the effects of the events in Ukraine, the weakening Chinese economy and the dropping value of the Ruble. In this issue the global wood fibre market is under the microscope. Wood fibre prices across the globe were affected by the events in Ukraine and the response from the rest of the world through sanctions and refusals to trade.

Wood Resources International noted that the hardwood pulp prices were declining in 2023. However, hardwood logs hit a dip in the available supply following the events between Russia and Ukraine. Similarly to Russia's timber prices dropping in the wake of this

geopolitical event, the fibre prices suddenly shifted with the worldwide response to Russia. Unlike Russia's timber prices however, the hardwood fibre prices jumped by 44% compared to the price in late 2020 found on the Global Hardwood Fibre Price Index (HFPI). There were large price jumps in Brazil, Germany, France, Finland, Sweden and Canada. However, this was not a global increase, other countries continued to experience prices declining including the US, Spain, China, and our very own Australian market. China saw the largest

GLOBAL WOOD FIBRE PRICE INDICIES (SFPI & HFPI)



Wood fibre is a diverse material, used to make a variety of products from MDF boards to paper.

drop of over 20% despite being a large importer.

The softwood fibre market is looking no better than the hardwood fibre market. Both Europe and North America have had lower output of softwood fibre production and the prices for softwood fibres are continuing to decline globally. These factors have reduced the global demand for softwood fibres which compounds the problem and continues to stifle the price.

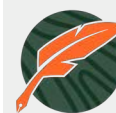
Quarter 2 2023 saw the prices on a high before the biggest decline for the softwood fibre market from quarter to quarter since 2015.

The Softwood Fibre Price Index (SFPI) showed a 4.5% drop in price from the second quarter to the third quarter of 2023. The biggest declines in cost have been felt by the US, western Canada, Austria, France, Spain, Chile and Australia.

There is some good news for Australia as the rankings for pulpmills show Australia, Spain and US northwest have had important ranking improvements since 2021. Spain moved from position #12 to position #8. Other countries such as Brazil, France and Germany have lost some of their competitive edge, Brazil did hold position #1 but is now in #5.

Overall, global markets are always shifting and changing but even more so following such a large geopolitical event like Russia's invasion of Ukraine. Which causes us all to watch and see how the markets move in response to the rapid changes in supply and demand.

Source: Wood Resources International



Timber Media
AUSTRALASIA

Timber & Forestry enews an authoritative and rapid deliverer of news and special features to the timber and forest-based industries in Australia, New Zealand and internationally. Enews is delivered weekly, every Thursday, 48 weeks of the year. Advertising rates are competitive with other industry publications. Timber & Forestry enews hits your target market – every week, every Thursday!

HEAD OFFICE

Timber Media Australasia Pty Ltd
PO Box 3001
Maraylya NSW 2765

PUBLISHER

Timber Media Australasia Pty Ltd

EDITORS

Nicky Ainley
Donyale Harrison
Jess Hockridge
editors@timberandforestryenews.com

ADVERTISING

Campbell McInnes // +61 (0) 406 223 007
campbellm@timberandforestryenews.com

ACCOUNTS

Chris Parker // +61 (0) 413 710 203
cparker@ttnews.com.au

SUBSCRIBE

www.timberandforestryenews.com

The information contained in this publication has been obtained from sources assumed to be reliable. However, the publishers disclaim all warranties as to the accuracy, completeness, reliability or adequacy of the information displayed. Opinions expressed in Timber & Forestry enews are not necessarily those of directors or the Timber & Forestry enews team. We do not accept responsibility for any damage resulting from inaccuracies in editorial or advertising. The publishers are therefore indemnified against all actions, suits, claims or damages resulting from content in this publication.

CLASSIFIED ADVERTISING

PRODUCTS & SERVICES

BUY AND SELL -

New and Used
Machinery/Equipment

Click this link
to advertise
here & online...

EMPLOYMENT

LATEST JOBS:

Click this link
to advertise
online...

ADVERTISING PACKAGES

PACKAGES:

Click this link
to learn about
advertising
packages...

ADVERTISING RATES



DISPLAY AD RATES

All pricing below is excluding GST and are based on a weekly booking. Overseas bookings are exempt from GST.

FULL PAGE: \$540

297mmH x 210 mmW

HALF PAGE: \$320

Vertical • 256mmH x 93mmW

Horizontal • 125mmH x 190mmW

THIRD PAGE: \$240

Horizontal • 73mmH x 190mmW

QUARTER PAGE: \$210

Vertical • 125mmH x 93mmW

Horizontal • 63mmH x 190mmW

PAGE 1 Front cover strip:

Contract booking

Horizontal • 32mmH x 200mmW

PAGE 1 Front cover module:

Contract booking

Horizontal • 45mmH x 50mmW

PAGE 2 below story: Contract booking

Horizontal • 73mmH x 190mmW

CLASSIFIED ADVERTISING

JOB ADS: ONLINE ONLY

BUY & SELL ADS: ONLINE & IN PUBLICATION

744pxH x 720pxW

TERM DISCOUNTS

12 WEEKS: 7.5%

24 WEEKS: 10%

48 WEEKS: 15%

ADVERTISING DEADLINES

Display ads: Book by 9am Tuesday prior to publication

Supplied artwork: Wednesday 12 noon prior to publication. Supply hi-res jpg or pdf to our specifications. **NO crop marks or bleed required.**

Classified advertising: JOB ADS ARE COMPLETELY ONLINE.

Go to www.timberandforestrynews.com/post-a-job/ to place a job vacancy. **Book and pay online by 12noon Wednesday prior to publication.** Job ads are for individual positions. If more than one position is to be advertised, separate ads will need to be created and advertised accordingly.

BUY & SELL ADS ARE ONLINE & IN PUBLICATION.

Go to www.timberandforestrynews.com/product/buy-sell-advertisement/ to place an ad. **Book by 5.00pm Tuesday prior to publication.**

PAYMENT TERMS

New clients invoiced on booking. Existing clients 14 days.

WHO TO CONTACT

Media releases and editorial:

Nicky Ainley // Donyale Harrison // Jessica Hockridge

e: editors@timberandforestrynews.com

Display ad bookings:

Campbell McInnes // e: campbellm@timberandforestrynews.com

Accounts:

Chris Parker // e: cparker@ttnews.com.au

Have some news to share?

Send media releases, news stories, events, any timber and forestry news related information with us anytime to Nicky, Donyale and Jess -

editors@timberandforestrynews.com



Contact Nicky,
Donyale or Jess today...