

DELIVERED
WEEKLY TO
15,200
GLOBAL
READERS*

Like and
follow us on



ISSUE 785 // December 14, 2023

timber & FORESTRY *e*news

**A Merry Christmas
with Australia to
increase its use
of timber**

NEED CREATIVE HELP?

We have an experienced,
in-house, artistic team
who can deliver polished ads,
promotions, brochures
and more.

ENQUIRE TODAY

TimberTrader
news

**subscribe
now**

for your printed magazine

 **Wood
Solutions**
design and build

www.woodsolutions.com.au

 **Responsible
Wood** RW/1-10-1

To find certified
organisations or
wood products
on our database...

Click here.

**ALL UNDER
ONE ROOF**

- ◆ IR SUPPORT
- ◆ TRAINING
- ◆ EMPLOYMENT
- ◆ WHS
- ◆ COMMUNITY



 **NTHA**
NATIONAL TIMBER &
HARDWARE ASSOCIATION

1800 822 621

South Coast forestry fires prepare for summer

MORE than 50 Forestry Corporation firefighters will prepare for summer fires honing their skills in a five-day training camp at Bombala last week.

Staff from the South Coast, Central West, Mid North Coast, Hunter, Northern Tablelands and North Coast of New South Wales are training in essential firefighting skills such as fire command, control and communications, appliance and tanker operation.

The intensive training involves seasonal firefighters and Forestry staff, who outside of their normal employment roles serve as general firefighters, advanced firefighters and crew leaders.

Forestry Corporation's Fire Training and Operations Officer Adrien Thompson said the training camp was a crucial component of fire season preparation.

"Forestry Corporation is responsible for preventing and managing fires in two million hectares of State forests across New South Wales," Mr Thompson said.



Over 50 firefighters joined the annual training in NSW which is a vital component of bushfire season preparation.

"We take our firefighting responsibilities incredibly seriously – our training ensures everyone from our most experienced firefighter through to our newest recruit is fit and ready to be deployed to the fire front.

"We also send crews to assist on large bushfires across all tenures within their local areas, interstate and even internationally, so we need to ensure we are at the top of our game."

One of Forestry Corporation's most

experienced fire specialists Andrew Condie of Batemans Bay is currently serving a deployment in Western Australia with the NSW bushfire response team.

Forestry Corporation also sent 16 firefighters abroad this year to assist with Canada's bushfire emergency.

“THE TRAINING CAMP IS A TIMELY SKILLS REFRESHER”

With several large fires having already been contained on the south and north coasts, around Bombala and across the Northern Tablelands this season, the focus for Forestry Corporation's fire specialists has shifted to the threat of summer wildfires across the state.

"The hot and dry conditions mean we've already had crews managing bushfires in partnership with other NSW firefighting agencies, so this training camp is a timely skills refresher," Mr Thompson said.

The Bombala camp is part of a series of annual firefighter training events held around the state.

"Every year we bring our seasonal recruits and permanent staff together for

Cont P 3



THE CHOICE IS YOURS.

Following the awarding of a Global GreenRate Level A certification, MicroPro Wood Treatment Technology has recently been awarded a GoldHEALTH rating with its recently published Global GreenTag Level A Product Health Declaration™ (PHD™).

The GreenTag PHD is the first health transparency tool in the world to assess human health concerns directly, rating the health impacts of a final product – and not just the hazards of a product's ingredients.

For more information call us now on 1800 088 809.



MicroPro® is a registered trademark of Koppers Inc. or its subsidiaries. MicroPro® timber products are produced by independently owned and operated wood preserving facilities. © 2019 Koppers Performance Chemicals Australia Pty Ltd. Global GreenRate, GoldHEALTH, Global GreenTag and GreenTag PHD are registered trademarks operated under licence by Global GreenTag Pty Ltd.

Australia to increase use of timber in built environment

THE Australian Government, along with 16 other countries, has committed to increase the use of timber in the built environment by 2030.

The Forest and Climate Leaders' Partnership Coalition on Greening Construction with Sustainable Wood made the announcement at the COP28 in Dubai.

Natasa Sikman, acting CEO of the Australian Forest Products Association (AFPA) said, "AFPA congratulates the Australian Government for signing up to this Coalition and its commitment today. Wood from sustainably managed forests provides climate solutions within the construction sector.

"This is an important step in the right direction by the Australian Government to build confidence in the timber construction market.

"We look forward to continuing our work with the Government on developing

enabling policies which will turbocharge a greater use of wood in the built environment," Natasha continued.

The 17-member Coalition, of which Australia is a member, committed to advancing policies and approaches that increase the use of wood in the built environment by 2030. The Coalition recognises that such policies and approaches will result in reduced Greenhouse Gas Emissions and an increase in stored carbon.

"Ministers from Kenya and Costa Rica announced the need to increase the use of wood in the built environment in the race to net zero," Natasa Sikman said.



16 Countries agreed to increase the use of wood in the race to net zero.

"Speakers made clear that the products from sustainably managed forests have multiple benefits for the building sector, replacing plastics, and delivering positive outcomes for local communities.

"Sustainably managed forests also help protect nature and biodiversity from

deforestation and the threats from climate change."

The announcement builds on the recognition in the latest report from the Federal Government's own Climate Change Authority (CCA) which cited the 'carbon stored in trees' as well as 'harvested wood products' helped reduce Australia's greenhouse emissions in the year to June 2023.

This, at a time when total national emissions increased to 467 million tonnes, an increase of 4 million on the previous year.

It is timely the Government has announced a commitment to ramp up the use of timber in the built environment.

From P 2

pre-season training camps to train, upskill, refresh and improve their practical skills and fitness ahead of the fire season," Mr Thompson said.

"We hold fitness tests and pre-season fire days in each region to put all our firefighting staff through their paces in realistic emergency scenarios and critical

information sessions.

"Forestry Corporation's investment in training our firefighting staff, enhancing fire control rooms and equipment, upgrading fire trails and staffing fire towers has proven very effective in protecting local forests and communities from damaging fire."

Forestry Corporation

spends the cooler months preparing roads and fire trails, completing hazard reduction burns, upgrading equipment and ensuring staff are ready to respond quickly if a fire breaks out.

Ahead of this bushfire season, Forestry Corporation has acquired three new category one tankers stationed at Tumut, Bathurst and Grafton to improve the

firefighting capabilities of crews.

Forestry Corporation is working with the NSW Rural Fire Service to replace the entire fleet of 50 tankers at a cost of almost \$15 million in coming years.

Find out more about Forestry Corporation's firefighting response at www.forestrycorporation.com.au



Are you following us on social media?

Please like and share our page so we can get the timber and forestry message out to a bigger audience. If you like our publication, please leave us a review.





Celebrating and remembering 2023 and looking forward to 2024

FIRSTLY, we would like to acknowledge and thank all our regular advertisers and welcome our new advertisers for 2023. We also wish to acknowledge our column contributors, writers in Australia and New Zealand along with the associations who provide strategic information, verification and continue to provide ongoing support. Your work and efforts are truly appreciated.

We have celebrated some successful operations, and stories and brought forth

interesting articles on a range of important topics and where appropriate follow-up pieces. Of course, the devastation caused by fire, storms and flooding impacts both here and abroad has been profound. The State government decision in both VIC and WA, declaring the closure and then bringing forward that closure in sustainable logging in native forests was a significant blow to our industries and will be felt by loggers, transport, mills and the wider supply chains. In some cases, the impact of this may force the closure of some

communities and leave us without the volunteer bushfire fighters we have come to rely on. We remain committed to following up on these issues, as they and you matter!

The team at Enews is growing and this year we expanded our editorial team to 3, with Nicky Ainley, Donyale Harrison and Jessica Hockridge all providing excellent research and editorial oversight.

Zonya Bird has continued to weave her magic with graphic and visual design and pull the

digital publication together each week prior to distribution on Thursdays. The rest of the team includes Dennis Neilson, Campbell McInnes and Chris Parker.

Sadly, we paused to acknowledge the significant contribution, passion and dedication the late John Halkett made to Enews. The team was devastated by his loss and I can only describe their willingness and determination to push

Cont P 7



NTHA CAN

TRAIN AND UPSKILL YOUR EXISTING TEAM MEMBERS

- ✓ Nationally recognised qualifications and training
- ✓ Specialist industry trainers


STRENGTHEN YOUR TEAM

RETAIL, SALES, BUSINESS, SUPPLY CHAIN OPERATION AND LEADERSHIP QUALIFICATIONS


(RTO 5343)
1800 822 621
ntha.com.au



The united voice for Australia's forest industries



0408 404 764
 enquiries@ausfpa.com.au
 www.ausfpa.com.au



Timber Queensland welcomes COP28 landmark decision

QUEENSLAND'S peak body for the forest and timber industry has welcomed the landmark decision by Governments at COP28 (see page 3), which will have wide-ranging impacts for both the forest products and building sectors.

"This landmark decision recognises the benefits of using wood products which capture and store large amounts of carbon while also having far fewer emissions compared to other building materials," said Timber Queensland CEO Mick Stephens, attending COP28 in Dubai.

"Globally the building and construction industry accounts for a third of total emissions. This commitment provides a clear recognition of the government's role in promoting the greater use of wood from sustainably managed forests, which can greatly reduce the carbon footprint from the built environment," he said.

"Previously a lot of policy focus has been on the operational energy efficiency



Timber Queensland has welcomed the landmark decision

of buildings rather than the embodied energy of the materials used. This is real progress and can collectively help advance timber supply chain readiness and capacity with builders, engineers and architects for climate-proofing future buildings."

Actions to be applied under the initiative include removing policy and technical barriers for the greater uptake of timber building systems, advancing R&D in design and construction and knowledge transfer.

"Within Queensland, we are already working

with the state government on the development of a carbon-positive roadmap for the forest and timber industry which will include opportunities to contribute to lower carbon outcomes for future public infrastructure and housing needs," Mr Stephens said.

"We are particularly excited by the opportunities for timber systems to support

“ THIS WILL STRENGTHEN THE QUEENSLAND ECONOMY ”

essential infrastructure for the Brisbane 2032 Olympics and Paralympic Games."

The Queensland Government has committed to a climate-positive Games and is consulting widely with industry bodies and stakeholders to deliver on key objectives.

Speaking at COP28 the Queensland Deputy Premier, Steven Miles, said, "Importantly, we have committed to a climate-positive 2032 Games and this will go a long way in helping us achieve that goal while delivering the infrastructure our growing state needs."

"Not only will this help protect our environment, it will help strengthen the Queensland economy for the future.

The current, Palaszczuk Government is committed to embracing the opportunities decarbonisation brings to open up new supply chains to meet the growing global demand for cleaner, greener, more sustainable products," Mr Miles said.

Looking for certified organisations or products?

Search our database to find Responsible Wood certified forests, businesses, wood products and chain of custody certified organisations.

responsiblewood.org.au



Natural tree shape 'key' for one engineered wood system

Low-cost manufacture on a global scale.

A MAJOR Malaysian vertically-integrated ply and timber company has become the first to recognise the global potential of an Australian engineered wood system that brings most of a tree's natural shape into the built environment for housing, commercial, and mid-rise, multi-residential apartment buildings.

Wollongong-based Loggo IP Pty Ltd's low-cost manufacturing process focuses on three multi-patented engineered wood products, each based on retaining the "rounded shape and properties of a tree".

"Unlike the present industry which cuts the log into multiple sections and joins them back together again (with masses of glue, spent energy and emissions) this Loggo concept capitalises on the tree's natural rounded shape and strength, seamlessly transitioning its engineered wood products directly into the built environment" says Loggo founder and CEO Pat Thornton.



Samling Timber Group CEO Lawrence Chia (left) with managing director of Loggo IP Pty Ltd Pat Thornton (centre) at the signing of an MOU in Siri, Sarawak, witnessed by Datu Bojet, representing the Sarawak Timber Industry Development Corporation.

"When scaled, the system will be the most cost-efficient and greenest way to use wood in future framing."

Thornton says, "in most houses, commercial, public buildings and mid-rise and multi-residential apartment blocks, these rounded, stronger shapes will be behind coverings in the walls, ceilings and floors except when an architect wants to expose them"

Initially, Loggo's market penetration will begin with flooring systems; the 'round

shape' is naturally hidden from sight.

Beams can be manufactured from selected species of young roundwood, small diameter forest thinnings and, more remarkably, they can be made from small diameter peeler cores, a very low-value, problematic, non-structural by-product of the plywood industry which has already been 'true rounded' in shape.

Thornton says because the roundwood beams retain more fibre and strength, as

well as lower net carbon emissions through minimal processing, there is a subsequent salvaging and embedding of even more carbon than most incumbent framing systems.

Loggo's 'rounded shape' also offered greater resistance to fire in the built environment than most architecturally historical and incumbent designs of engineered wood, most of which have square edges allowing fires to ignite quicker.

"And," says Thornton, "the Lamilog has unique 'internal' metal connectors adding even greater fire resistance.

Pat Thornton says a move back to better forest management with periodic thinning is a bonus that mitigates the damage from undergrowth-propelled wildfires.

"Harnessing these very low-cost resources and set-ups affords an innovative new building system for the future housing, general timber construction, retrofitting and

Cont P 7

An opportunity for
On-Island Processing of
Tasmanian hardwood
plantation logs

Find out more



County Helicopters is
your premier choice
for specialised aerial
applications in forestry,
utilising both helicopters
and drones to cater to
your specific needs.

COUNTY
HELICOPTERS

P: 0417 442 980
ashley@countyhelicopters.com.au
www.countyhelicopters.com.au

DECEMBER

15: International Conference on Community Forestry and Conservation (ICCFC - 23) – Melbourne. The conference provides a premier global platform for exchanging ideas and insights on the latest developments across various fields. Our goal is to offer a competitive venue for industry professionals and academic researchers to showcase and discuss cutting-edge advancements in their respective fields. More details <https://sairap.org/conf/index.php?id=1871959>

SAVE THE DATES 2024

MARCH 18-19: FTMA National

Conference – Geelong, VIC.

The conference is designed to expand members' perspectives by thinking beyond the conventional. Topics covered: understanding future housing scenarios, highlight potential threats to our market position, provide strategies for navigating the industrial environment, offer advice on defending your business from work cover claims, and shed light on future framing possibilities. Registrations now open at <https://conference.ftmanews.com/register-now/>

APRIL 23-24: Planned International Forest Investment Conference – New York City. TBC

MAY 1-2: Sydney Build Expo – Sydney. Sydney Build is the only event in Australia to offer 300+ accredited presentations, 500+ exhibitors and incredible networking opportunities for all of Australia's construction, architecture, engineering and infrastructure industries.

SEPTEMBER 23: Latin America Forest Investment Conference – Porto Alegre, Brazil.

SEPTEMBER 24-25: International Woodchip and Biomass Trade Conference – Porto Alegre, Brazil.

SEPTEMBER 25-27: Field Trip – Rio Grande do Sul State, Brazil.

OCTOBER 22-23: International Woodchip and Biomass Seminar and Networking Event – Singapore.

SAVE THE DATES 2025

JUNE 22-26: World Conference on Timber Engineering – Brisbane. WCTE is the world's leading scientific forum for the presentation of the latest technical and architectural solutions and innovations in timber construction.

OCTOBER 20-22: International Woodchip and Biomass Seminar and Networking Event – Singapore.

OCTOBER 23-24: Field Trip – Vietnam.

From P 4

through, work as a team and do everything possible to ensure the ongoing success, as extraordinary and in doing so, honouring John.

To the whole Enews team, we acknowledge your dedication and significant

efforts, through what was a difficult time. We are very fortunate to have a large number of Talking Tree columns, John had written but not yet published. We plan to continue this column in John's memory, which we know John would appreciate and after all, he wrote these columns to be

shared and read.

We are all looking forward to 2024 as we work to achieve some significant steps forward in the growth and development of your publication. New strategic links have recently been established and we expect to be providing more content from around Australia

and will continue to report on up-to-date news, interesting stories and important industry issues as they come to hand.

We wish all our readers, advertisers and supporters a joyful, happy Christmas and all the very best for the upcoming festive season and a healthy prosperous 2024 year.

From P 6

mass timber markets around the world, along the way assuring ply manufacturers and other suitable early venturers greater returns on investment – and profits," Thornton said.

"Also, these systems promote regional circular economies with the low-cost,

low-tech machinery trucked from forest to forest."

So where to next for Loggo?

"We are well advanced in our partnership with Samling, the largest ply and peeler core supplier in Malaysia, with the real possibility of extending a similar business plan to entrepreneurial ply and veneer companies in other countries,"

Thornton said.

"Our patents protect each company in their own regions, especially those with PEFC and FSC certification

“ CAPITALISE ON A TREE'S ROUNDED SHAPE AND STRENGTH

across their forests and wood products."

The 'roundwood concept' has not lost on the University of Queensland's Advance Future Timber Hub. Loggo has secured a large grant for future R&D into a wider array of suitable species selection and testing.

For more details visit www.loggo.com.au

Do you crosscut timber packs at ±1mm accuracy
OR cut structural timber, panel products (MDF & LVL), paper rolls
OR produce pallet dimensions or studs on fixed lengths

HOLTEC has a solution for you

For more information contact:
 Ph: +64 9 416 8294
 Fax: +64 9 416 8296
 Email: sales@holtec.org
 Web: www.holtec.org

HOLTEC
 YOUR PARTNER FOR THE PERFECT CUT

Our Scope of Supply:

- Mobile and stationary chainsaws
- Timber crosscut stations
- Log cutting stations
- Circular saws
- Mechanisation
- Sorting lines
- Scanning and optimising systems
- Special systems

Funding boost welcomed for ABARES forestry data analysis

THE Federal Government's Mid-Year Economic and Fiscal Outlook (MYEFO) has delivered almost \$10 million of additional Australian Bureau of Agricultural and Resource Economics (ABARES) funding over four years - as well as additional ongoing funding - to deliver forestry data analysis to support industry development and positive environmental outcomes.

Australian Forest Products Association (AFPA) Chair, Joel Fitzgibbon said, "This funding is very welcome news for

Australia's forestry and forest products sector. The additional data and analysis of forestry resources will be incredibly beneficial for our sector and for policy and decision-makers."

The MYEFO update states the \$9.7 million will be delivered over four years from 2023-24, with \$2.8 million per year ongoing after that.

"AFPA has been calling for greater resourcing for ABARES forest economics and science and I congratulate Acting CEO Natasa Sikman and her



Chair, Joel Fitzgibbon has welcomed the funding announcement saying the data is critical for the sector.

circulating throughout the forestry conversation," Joel Fitzgibbon said.


"The funding will generate more professionally independent expert analysis and data to inform industry and government on issues affecting the sector including its ability to contribute even more as a climate solution.

"We know the importance of the ABARES forestry teams' ability to deliver timely and regular data, as well as Australia's State of the Forests Report. This information is critical because it informs policy on a range of issues, from Regional Forest Agreements (RFAs) to threatened species

Cont P 9

“RESEARCH WILL PROVIDE CRITICAL FOREST INDUSTRY SUPPORT

team on their effective and successful advocacy efforts. Bring on the evidence-based policy, there is far too much mischievous disinformation



BUILD BETTER WITH ATS

At ATS Building Products, we understand that everything has to line up. Great projects – no matter the size – require a mix of quality, timeliness, & competitive pricing.

You can count on our team to make sure your projects run efficiently and deliver value from start to finish. We are driven to help you do your best work.

Right products. Right time. Right price.

Visit us in person or online at www.ATSBP.com to learn more about how we can help you build better.

NSW	NSW	NSW	QLD	VIC	SA
157 Briens Road Northmead, 2152 t. 1800 577 551	17-23 Longfeld Street Lansvale, 2166 t. 1800 577 551	4B/400 Moorebank Ave Moorebank, 2170 t. 1800 577 551	Unit 3 / 153 Rossmanns Rd Stapylton, 4207 t. (07) 3667 8217	372 Lower Dandenong Rd Braeside, 3195 t. (03) 9034 3994	48 Lipson Street Port Adelaide, 5015 t. (03) 9034 3994

From P 8

management, illegal logging and other industry issues. It also provides independent, thorough, and accurate information to fight the unfortunate increase in disinformation about the sector.

"ABARES is also responsible for plantations estate data. It's important that this is updated in a timely manner to make sure everyone is aware of both the decline in the size of the estate and the need to turn that contraction around.

"Ultimately, without well-

considered and effective ABARES research, the government and the sector cannot make the right decisions for the country. This research will provide critical support for the Minister's Strategic Partnership, which I co-chair, to develop a long-term "Timber Fibre Strategy".

"I thank the Government for this additional and important funding. It will go to good use, providing the information needed to drive progress on our efforts to build sovereign capability at a time our imports are growing quickly," Joel Fitzgibbon concluded.

AFPA Chair shares his opinion and thoughts of COP28

THE annual United Nations climate change conference is something to behold. In the pavilions of the COP's Blue Zone, singing and proselytising are a constant reminder of the religious-like fervour many activists bring to their cause. Yet most believe they have come to Dubai to do good things for our planet.

But while the climate change challenge brings unity of cause, opinions vary widely on the best pathway to success. Some focus entirely on emissions reductions, recklessly demanding an immediate cessation of fossil fuel consumption.

Others recognise the urgency and enormity of the challenge and understand that such a big task requires time, calm and multiple solutions. This is the sensible message business leaders and industry bodies brought to COP28.

Some COP participants are

right to promote the future role of still emerging technologies like green hydrogen and green steel. Others sensibly urge a greater role for tried and tested but still under-utilised methods like nature-based solutions, carbon capture and bioenergy.

Along with our oceans, our trees are nature's great carbon sinks. We need to plant more trees – both environmental and production trees.

The UN's Intergovernmental Committee on Climate Change has declared: "a sustainable forest management strategy aimed at increasing forest carbon stocks, while producing an annual sustained yield of timber, fibre or energy from forests, will generate the largest sustained mitigation benefit".

On display at COP28 is the extent to which many European countries are utilising biomass from forestry and broad-acre non-food crops for fuel, heating, and electricity generation purposes. We need to learn from their leadership.

Joel Fitzgibbon. Originally published in The Australian 6-12-2023

“ WE NEED TO LEARN FROM THEIR LEADERSHIP ”



**Renewable.
Sustainable.
Reliable.**

P: 07 3147 8790
E. sales@vidawood.com

VIDA
MADE IN SWEDEN

CANFOR
MADE IN CANADA

Vic Construction helping vulnerable youth

KEY players in Victoria's construction industry are making a difference in the lives of vulnerable young people by raising funds and completing building and renovation projects for Melbourne youth homelessness charity, Lighthouse Foundation.

Young women fleeing forced marriage and youth needing a home, tailored care, and therapy, will benefit from the low-cost and pro bono work on two major projects.

TEN Women, the Property Industry Foundation and Hansen Yuncken, are refurbishing and extending a Lighthouse Foundation home for Lighthouse's Young Women's Freedom tailored care program. The project will see extensive work completed to provide a new communal



The youth foundation has engaged Victorian construction workers to assist in projects to support the homeless.

kitchen where literacy and numeracy lessons can take place, a large living area, new bathrooms, and a dedicated wing for carers and clinicians. TEN Women is a group of female leaders in construction which raised \$640,000 for the renovation of this Lighthouse Foundation home, the first

Australian safe refuge designed to meet the recovery needs of young women (15 – 25 years) escaping an early and/or forced marriage.

"The purpose of TEN Women is to build connections through our industry, and we realised a couple of years ago that we had a pretty powerful network that we wanted to leverage to do good things," Hansen Yuncken Director, Louise Hansen, who is part of the group, said.

"We are encouraging partners and subcontractors to donate their time or supplies to the house so that the money can be put into the home itself, making sure it is as comfortable as it can be," Ms Hansen said. "It's certainly very satisfying to make a real difference to the lives of these

young women who have already been through so much."

The Property Industry Foundation (the Foundation) has assisted with six homes for Lighthouse over the past 10 years.

"The Property Industry Foundation has partnered with Lighthouse Foundation on several projects since 2010," The Foundation's Victorian State Manager Priscilla Heathwood said.

"For more than 25 years, we have been proudly supported by over 150 organisations in the property and construction industry who offer in-kind donations, pro bono services and fundraise to support projects like this one. This contribution is vital in helping our charity partners like Lighthouse Foundation continue to support young people at risk of or experiencing homelessness to overcome their traumatic life experiences, build relationships and heal in a safe environment."

McCormack Director, Lauren McCormack, recently completed a redesign of Lighthouse's Youth Resource Hub and Head Office in Cremorne.

Cont P 11



Develop our future workforce

ForestWorks is an industry-owned not-for-profit organisation offering services to support the skills development of the forest, wood, paper, timber and furnishing industries.

ForestWorks works with industry, government and the education and training sectors to improve skills standards and qualifications and support the development of forestry-related industries, their people, and enterprises.

To find out more:

Email: forestworks@forestworks.com.au
Phone: 1800 177 001
www.forestworks.com.au

**PREMIUM QUALITY STRUCTURAL FRAMING
TIMBER, LVL AND I-JOIST
PRODUCTS.**



www.vigidas.com.au phone: +61290984323 sales@vigidas.com.au



From P 10

“The Youth Resource Hub is important to the operation of Lighthouse Foundation and is a safe space for Lighthouse’s young people to access services and activities like therapy and cooking sessions. It was important the space felt like a home for their community and the young people they care for.”

McCormack called in favours from the company’s own contractors and suppliers to make sure the project was

of the highest quality while costs were kept low.

“We wanted to be involved in this project to make sure that as a part of our partnership with Lighthouse Foundation, we could make a difference by utilising our skills and knowledge, and our community, to make something happen,” Ms McCormack said.

“The appreciation you get from not only Lighthouse staff, but the people they help, is amazing. Even the smallest things you do for them are life-

changing and it’s uplifting to see the change we are making.” Lighthouse CEO Dr Eamonn McCarthy said donations and partnered projects from businesses and the community allowed the charity to support more vulnerable young people.

“THE LIFE-CHANGING PROJECTS HELP THE MOST VULNERABLE IN THE COMMUNITY

“The number of youths in Victoria facing homelessness is sadly growing. With the support of businesses and industries like those in building and construction, we can give these young people a welcoming place to come to where they can access the help they need to heal and live happy, safe, and successful lives,” Dr McCarthy said.

“We are forever grateful to those who support us in our mission to end youth homelessness.”

Real Christmas trees facing real problem

THE smell of a real pine tree as you walk in the door is becoming increasingly popular in Australia with more of us opting to buy a real tree.

However, just over a week from the big day some Aussies are struggling to get their hands on them, depending on where you live.

Far North Queensland grower Juana Adoberg said she had been blown away by consumers’ enthusiasm for a real tree during the pandemic, and demand had not waned despite cost of living pressures.

“Nobody was travelling and everybody was like, ‘Oh,

we just want to have a nice Christmas because it’s been such an awful year’ and so everyone wanted to get a real tree,” she said.

However, turbulent and patchy weather conditions in parts of the country have impacted supply, with shoppers warned not to

leave their purchases too late because some growers sell out early.

Radiata (or Monterey) pines are the most widely grown variety used for Christmas trees and this year’s yields are influenced by conditions in the previous seasons.

arxada

Always in demand

TRUST
Ecowood[®]

TREATED
TIMBER
PRODUCTS

Ecowood[®] is a registered trademark of Arxada or its subsidiaries. ©2022 Arxada

Survey highlights significant increase in female executives

THE number of females involved in the forest and timber industry is continuing to grow the results of a recent survey from Forest & Wood Products Australia (FWPA) showed.

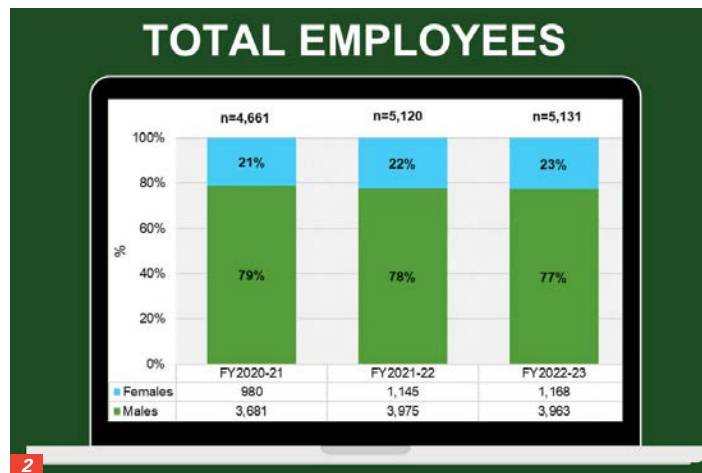
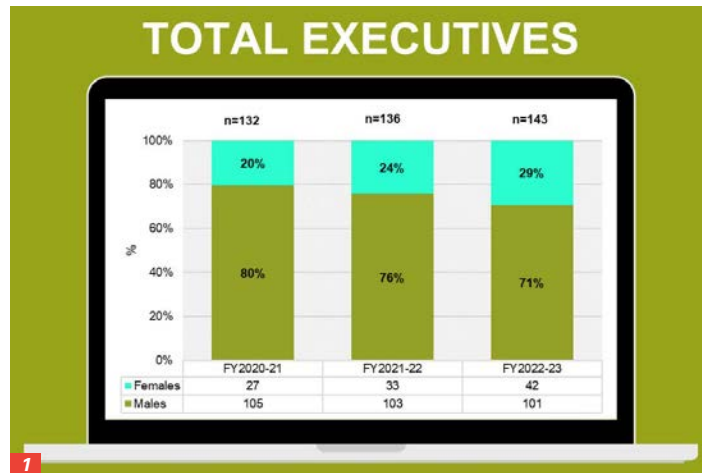
For the fourth year running, companies in the forest grower and timber processing sector completed a voluntary Gender and Diversity Survey, which is part of an ongoing industry-wide commitment to increasing the participation of women across the workforce.

The 2023 survey was completed by 23 companies of which, The key finding shows a positive trend in the increasing number of female employees in the industry.

The survey also highlights an increase in female executive roles in both forest grower and timber processing sectors. Over the past 2 years, the proportion of female executives has increased from 20% (27 roles) in 2021 to 29% (42 roles) in 2023.

“As a female executive in this historically male-dominated industry, it is great to see gender diversity improving, clearly recognising and realising the benefits of diverse thinking at a strategic level” said Katie Fowden, General Manager at Hyne Timber and Board Member at FWPA.

“The gender diversity at industry events has completely transformed in recent years



1/ Total executives FWPA gender and diversity survey 2023.
2/ Total employees FWPA gender and diversity survey 2023.

and it is vital that the leaders in our industry, whether male or female, continue to support such opportunities. Appreciating that gender is only one aspect of diversity, as an industry, we need to be cognisant of the broader opportunities diversity can deliver”, said Katie Fowden.

“The ongoing FWPA member commitment to the diversity and inclusion

survey plays a key role in providing key information for the industry, reflecting their positive efforts in the diversity and inclusion policy area”, said Erick Hansnata, Statistics and Economics Manager at FWPA

For the third year running, companies in the forest grower and timber processing sector completed a voluntary Gender and Diversity Survey, as part of an ongoing industry-wide

commitment to increasing the participation of women across the workforce.

The 2022 survey was completed by 21 companies, with a key result showing a significant 20 per cent rise in the number of female employees since the first survey two years ago.

The figures also represent a valuable growth in gender diversity in corporate governance. In a two-year period, almost 25 per cent of executive level roles within the surveyed companies were now filled by female employees – an impressive increase of five per cent since the first survey was distributed two years ago.

Kevin Peachey, Statistics and Economics Manager, FWPA, said; “The survey plays a crucial role in enabling the industry to monitor the outcomes of its positive efforts in the diversity and inclusion policy area.

“With each year’s results, the industry is empowered with more data to draw on for analysis. That analysis aids planning for the improvement of diversity goals and policy development.”

If your company is not currently participating in this annual survey and you would like to, please contact FWPA Statistics and Economics Manager Kevin Peachey at kevin.peachey@fwpa.com.au or by calling 0411 060 186.

1075C



UNMATCHED PRODUCTIVITY. UNMATCHED RELIABILITY.

The Tigercat 1075C forwarder is unmatched in terms of productivity and reliability. Innovations like low-wide® and the hooked crane set Tigercat apart from the competition. The 1075C Forwarders now include the Tigercat built WideRANGE transmission.

Experience the Tigercat 1075C forwarder for yourself.



www.onetrak.com.au



www.tigercat.com



Scan to learn more

NZ eucalypts: promising signs of adaptability/productivity

By MICHAEL SMITH

ESTABLISHED in 2008 as a public/private collaborative initiative, New Zealand Dryland Forests Innovation (NZDFI) is looking to develop a multi-regional hardwood industry based on genetically improved, drought-tolerant eucalypts.

NZDFI's long-term vision is to establish "a network of regional hardwood industries across the North Island and northern South Island by 2050. For this to happen, wood supply catchments of durable eucalypt forests need to be planted over the next 30 years."

A recently released report – 'Variation in adaptability and productivity between durable eucalypt species in different New Zealand environments' – is an important step in that process.

The report summarises early results from 14 demonstration trials planted between 2010 and 2018 across several regions ... evaluating variations in tree survival, growth and stem form of 11 eucalypt species.

NZDFI's species selection for the trials took into account "Australian knowledge of their natural forests and experience in utilising the timber of each species" – and any Australasian and international forestry research and development.

Previous growth rate information was very limited, and NZDFI believes the latest data "will enable prospective growers to obtain a better idea of the performance that can be expected from well-managed plantations – and the degree of improvement obtainable from selecting the right species and seed sources".



1/ NZDFI trial at Avery's, south Marlborough: a dry-land site with annual rainfall of 600 mm.

2/ Eleven-year-old *E. bosistoana*, Cravens Road trial, Marlborough.

The organisation has identified species with proven or potential adaptability for New Zealand's "warmer and drier regions, and with proven timber durability for high-value products and diverse applications" (for example, as a substitute for CCA-treated products; a component of engineered wood; and biomass for bioenergy).

The report notes that species selected for improvement have a track record of being sawn and processed in Australia. "Some are considered endangered

and are no longer commercially available."

Further, the report says the increasing unavailability of 'native hardwood' in Australia presents a huge market opportunity for New Zealand forestry.

Among the principal species in NZDFI's breeding programme is *E. bosistoana* – "based on its capability to produce class 1 durable hardwood suitable for vineyard posts, with within-ground use expected to exceed 25 years".

The demonstration trials confirmed the species'

ability to survive and grow productively on a range of sites. It proved to have high productivity in Hawkes Bay locations with higher rainfall and limestone-derived soils.

E. bosistoana attained moderate productivity on a variety of other sites – even surviving and thriving on some wet sites with both light and heavy soils. However, it is not suited to drier exposed sites that reduce height growth and encourage poor form.

The report notes that "while all species are different, the research and development requirements to optimise productivity, health and wood properties are similar". The scope of research required for each species is significant.

NZDFI is now concentrating its efforts and resources on a few promising candidates for genetic improvement – with trials involving up to six species.

"These genetic gain trials are used to provide a ranking and long-term evaluation of the performance of different sources of genetic material for short-rotation post/pole regimes; medium-rotation sawlog regimes; and long-term permanent carbon forests."

Further research requirements include the modelling of biomass; establishing a comprehensive silvicultural trial programme; exploring a range of pruning and thinning options on diverse sites; and the analysis, reporting and transfer of new knowledge to growers.

Meantime, a smaller trial series planted in 2018 has

From P 14

recently been assessed. This series of trials has expanded knowledge of species-site adaptability and growth. At trial sites with higher rainfall and fewer frost days, some species are demonstrating outstanding annual height and diameter growth.

E. globoidea is another species on which NZDFI is focusing breeding efforts on. The 2018 trials included *E. globoidea* grown from seed collected from selected families in one of NZDFI's earliest trials – 'Waikakaho' in Marlborough. This *E. globoidea* is growing significantly faster than trees in the 2011-2018 trials, and demonstrates the first quantified expression of genetic gain by NZDFI's tree breeding programme.

The full eucalypt trial results can be read on the NZDFI's website: <https://nzdfi.org.nz/trial-results-released/>

NTHA announces elected board

FOLLOWING the merger in March between TABMA Australia and Hardware Australia, the National Timber & Hardware Association (NTHA) held their very first AGM on Monday the 20th of November 2023 in Sydney.

The following Members were elected as Directors for the ensuing year:

Merchant/Fabricators Positions

- Chris Lavis - Lavis Mitre 10
- Julie Murphy - Murphys Mitre 10
- Danny Gattone - Swadlings Timber & Hardware
- Lyndon Poirrier - Williams Group Australia
- Paul Stewart - Barrow & Bench Mitre 10
- Gary Walker - Belmont Timber Co

- Clint Spence - Beaudesert Mitre 10
- William Abi-Arrage - George's Building Supplies
- Michael Gaske - Ozline Timbers

Non-Merchant/Fabricator Positions

- Glenn Tilling - Tilling Timber
- Peter Hutchison - MiTek Australia
- Michael Shadbolt - ITI (Aust)
- Greg Downie - Central Purchasing Services

In the subsequent Board meeting, the Directors elected the following officebearers:

Chairman: Peter Hutchison

Vice Chairman: Paul Stewart

Vice Chairman: Glenn Tilling

"I am honoured and privileged to be the elected Chairman of the National Timber and Hardware Association (NTHA)," said Chairman Peter Hutchison.

"Along with Vice Chairs Paul Stewart and Glenn Tilling, I look forward to continuing the work NTHA is doing to ensure a thriving but sustainable industry together with providing exceptional services for our Members." Peter Hutchison said.

"The Board and NTHA staff would also like to thank out-going Director Brad Campbell for his commitment, insights and passion for the industry and we look forward to continuing to work with Brad as a valued member," a spokesperson for NTHA said in a statement.

KENNEDY'S RECLAIMED AND SUSTAINABLE ARCHITECTURAL TIMBERS ARE AN INSPIRED CHOICE FOR UNIQUE BUILDING DESIGN.

STRIKING AND DURABLE

A natural alternative to conventional building products, we provide the full spectrum of timber design possibilities.

Photo: Christopher Frederick Jones
Grand Central Shopping Centre,
Toowoomba QLD



WWW.KENNEDYSTIMBERS.COM.AU

Brisbane | Sydney | Melbourne | Perth | New Zealand

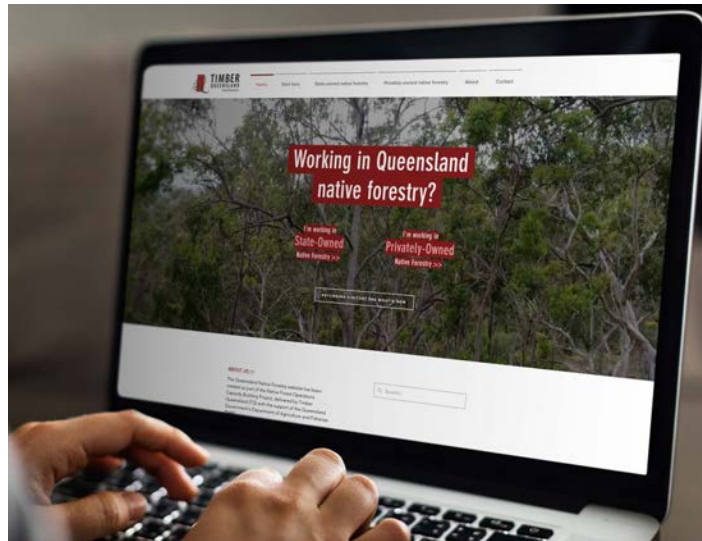
[f](#) kennedystimbers [i](#) kennedystimbers [e](mailto:sales@kennedystimbers.com.au) sales@kennedystimbers.com.au

Online resource launched for compliance

WITH operations on crown-owned Queensland native forestry subject to understandably complex regulatory obligations, Timber Queensland has released an online resource with a suite of easy-to-follow tools to help operators and permit holders safely and effectively navigate compliance.

The Queensland Native Forestry website (www.QldNativeForestry.com.au) has been created in line with the Native Forest Operations Capacity Building Project, delivered by Timber Queensland with funding support from the Queensland Government's Department of Agriculture and Fisheries. The work is part of a project to build greater capacity in compliance and improved management systems for operators in the state-based native hardwood and cypress sectors.

Timber Queensland Chief Executive Officer, Mick



The new online resource will assist people to get the correct information including permits.

Stephens, said that while the forest and timber industry prides itself on working within a well-regulated environment and wholeheartedly supports modern sustainable forest management practices, often the complexity and layering of numerous Codes, Guides and Standards can make compliance a challenging prospect.

"Across the industry, people want to do the right thing. It was important that we put something in place to help operators and permit holders alike understand their obligations – for the future of the forestry industry, and the forests we work in," said Mr Stephens.

Designed for easy access via computer, phone or tablet,

the website has been built to help operators (including harvesters, haulers and wood processing permit holders alike) to understand and meet their obligations through a suite of easy-to-follow training plans. Information is shared via downloadable guides and other resources with an emphasis on clarifying requirements across environmental, sustainable forestry, cultural heritage and workplace health and safety obligations.

With more training materials underway, further updates will be released on the website over the coming months and updates announced across Timber Queensland channels. Operators and permit holders are encouraged to check the site regularly and make use of training materials to ensure adequate competency standards in compliance for the benefit of their own operations, the forests and broader industry.

Visitors welcomed by forest photos display

A SELECTION of images from OneFortyOne's annual Forest Photography competition is now on display at the Mount Gambier Airport in the gallery space tucked behind the boarding gates.

OneFortyOne Corporate Affairs Manager Charlene Riley said this will be the last showing of the 2023 photo competition entries.

"The photo exhibition spent a few weeks at the Riddoch Art Gallery in town," Charlene said.

"We're very pleased that



District Council of Grant has also supported hosting the exhibition, allowing us to use gallery space at the airport."

"We've displayed the student work in a lovely contemplative spot behind the boarding area."

Each print is accompanied by a QR code which takes viewers to a story about what the student photographer loves



about the forest.

"Every year, the student stories are the best part of the photo competition," Charlene said.

"The stories are so involved and creative and by sharing the stories, we hope people feel more connected to our local forests," Charlene said.

"Whether you're visiting

the region for the first time like a grandparent visiting their new grandkids and delivering gifts from Santa, or you're a hot shot lawyer from the big city returning to her quiet hometown to

visit her family, and meet the country boy love of her life, for the holidays."

The exhibition will be showing up to the 22nd December, after which the students and their families involved are invited to pick up their prints from the OneFortyOne office on Jubilee Highway.

Jacinta Colley and women in construction

THE construction industry has changed a lot over the last generation, particularly when it comes to gender inclusivity. While there's been a lot of progress, diversity still needs advocates like the Women in Forest and Timber Network (WFTN) to keep change moving.

A spokesperson for Mitre 10 recently sat down with WFTN Ambassador Jacinta Colley, Sales Director at Vida Wood Australia, to talk about the opportunities out there for women.

Jacinta is currently working for Vida Wood Australia however how did she get there and what is her current role?

"I'm currently oversee of all sales transactions for Vida Australia, head-officed in Brisbane and shipping nationally and internationally," Jacinta told Mitre 10

"My job is to drive revenue, generate new business and build strategic relationships while managing all Vida Australia's advertising and marketing.

"I'm also the Chair for the Australian Importers Federation, where I've been a board member for the last 4.5 years."

Jacinta says she owes her job to her Dad who worked at CHH in Mt Gambier.

"He kindly informed me about a customer service job in Melbourne in 2000," she said.

"My eyes were opened to the building and construction sector and, 23 years on, there's no day that's ever the same. I live for the daily interactions with passionate, genuine, and positive humans."



Jacinta Colley has a passion for supporting women in the timber and forestry sectors.

Jacinta believes that women wanting to get into the industry need to 'give it a shot'.

"Because most trades are male-dominated, females can sometimes be intimidated or, even worse, treated poorly," she continued.

"But I think today females are more readily accepted, and leadership positions are becoming more balanced – it's just there aren't enough of us trying to have a go! This sector is challenging, but also rewarding, which is why I'm still passionate about it."

Over 10 years ago various industry bodies collaborated with Forest Works to create a national support network for women in forest and timber (WFTN) which Jacinta is heavily involved in.

"After much brainstorming and interaction the Queensland arm was formed, and together with three other key strong women we've continued to drive networking events, quarterly breakfasts and mentoring workshops," Jacinta said.

"As a woman who is passionate about being

heard and in a key position with Vida, I've been welcomed to support WFTN in most workplaces I interact with."

"WFTN Queensland (where I'm based) is a community to support, advocate for and empower women within forest and timber. We help connect, educate, and inspire women to reach goals while guiding, mentoring and building confidence.

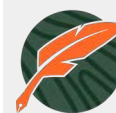
"I also lean on the National Association of Women in Construction (NAWIC) which provides a forum to exchange information, ideas, and solutions. It's an opportunity to expand personal and business networks, maintain awareness of industry developments, improve skills and contribute to other women in the sector," she continued.

And Jacinta's advice to other woman is simple; "don't underestimate or question your abilities or what you're capable of'.

"If you don't know, be confident enough to say that. Find out what you need, then circle back in a timely manner. This shows you're willing to learn and earns respect for following through on action items.

"If you don't allow change, you'll continue to recycle your experiences – so, be passionate, be driven, know your facts, and be authentically you. The world's your oyster if you'll allow it!" she said.

Source: Mitre10.com.au



Timber Media
AUSTRALASIA

Timber & Forestry enews an authoritative and rapid deliverer of news and special features to the timber and forest-based industries in Australia, New Zealand and internationally. Enews is delivered weekly, every Thursday, 48 weeks of the year. Advertising rates are competitive with other industry publications. Timber & Forestry enews hits your target market – every week, every Thursday!

HEAD OFFICE

Timber Media Australasia Pty Ltd
PO Box 3001
Maraylya NSW 2765

PUBLISHER

Timber Media Australasia Pty Ltd

EDITORS

Nicky Ainley
news@timberandforestryenews.com

Donyale Harrison
edit@timberandforestryenews.com

Jess Hockridge
jessicah@ttnews.com.au

ADVERTISING

Campbell McInnes // +61 (0) 406 223 007
campbellm@timberandforestryenews.com

ACCOUNTS

Chris Parker // +61 (0) 413 710 203
cparker@ttnews.com.au

SUBSCRIBE

www.timberandforestryenews.com

The information contained in this publication has been obtained from sources assumed to be reliable. However, the publishers disclaim all warranties as to the accuracy, completeness, reliability or adequacy of the information displayed. Opinions expressed in Timber & Forestry enews are not necessarily those of directors or the Timber & Forestry enews team. We do not accept responsibility for any damage resulting from inaccuracies in editorial or advertising. The publishers are therefore indemnified against all actions, suits, claims or damages resulting from content in this publication.

CLASSIFIED ADVERTISING

PRODUCTS & SERVICES

BUY AND SELL -

New and Used
Machinery/Equipment

Click this link
to advertise
here & online...

EMPLOYMENT

LATEST JOBS:

Click this link
to advertise
online...

ADVERTISING PACKAGES

PACKAGES:

Click this link
to learn about
advertising
packages...

ADVERTISING RATES



DISPLAY AD RATES

All pricing below is excluding GST and are based on a weekly booking. Overseas bookings are exempt from GST.

FULL PAGE: \$510

297mmH x 210 mmW

HALF PAGE: \$305

Vertical • 256mmH x 93mmW

Horizontal • 125mmH x 190mmW

QUARTER PAGE: \$195

Vertical • 125mmH x 93mmW

Horizontal • 63mmH x 190mmW

THIRD PAGE: \$225

Horizontal • 73mmH x 190mmW

PAGE 1 Front cover strip:

Contract booking

Horizontal • 32mmH x 200mmW

PAGE 1 Front cover module:

Contract booking

Horizontal • 45mmH x 50mmW

PAGE 2 below story: Contract booking

Horizontal • 73mmH x 190mmW

CLASSIFIED ADVERTISING

JOB ADS: ONLINE ONLY

BUY & SELL ADS: ONLINE & IN PUBLICATION

744pxH x 720pxW

TERM DISCOUNTS

12 WEEKS: 7.5%

24 WEEKS: 10%

48 WEEKS: 15%

ADVERTISING DEADLINES

Display ads: Book by 9am Tuesday prior to publication

Supplied artwork: Wednesday 12 noon prior to publication. Supply hi-res jpg or pdf to our specifications. **NO crop marks or bleed required.**

Classified advertising: JOB ADS ARE COMPLETELY ONLINE.

Go to www.timberandforestrynews.com/post-a-job/ to place a job vacancy. **Book and pay online by 12noon Wednesday prior to publication.** Job ads are for individual positions. If more than one position is to be advertised, separate ads will need to be created and advertised accordingly.

BUY & SELL ADS ARE ONLINE & IN PUBLICATION.

Go to www.timberandforestrynews.com/product/buy-sell-advertisement/

to place an ad. **Book by 5.00pm Tuesday prior to publication.**

PAYMENT TERMS

New clients invoiced on booking. Existing clients 14 days.

WHO TO CONTACT

Media releases and editorial:

Nicky Ainley e: news@timberandforestrynews.com and

Donyale Harrison e: edit@timberandforestrynews.com

Display ad bookings:

Campbell McInnes e: campbellm@timberandforestrynews.com

Accounts:

Chris Parker e: cparker@ttnews.com.au



DO YOU HAVE NEWS TO SHARE?

Send media releases, news stories, events, any timber and forestry news related information with us anytime to Nicky, Donyale and Jess -

news@timberandforestrynews.com

edit@timberandforestrynews.com : jessicah@ttnews.com.au



Contact Nicky,
Donyale or Jess today...