

DELIVERED
WEEKLY TO
15,200
GLOBAL
READERS*

Like and
follow us on



ISSUE 776 // October 12, 2023

timber & FORESTRY *e*news

30th Session of the Asia-Pacific Forestry Commission held in Sydney

COVER STORY P 5



“Rest in peace,
John. You will
be sorely missed.”

A TRIBUTE TO JOHN HALKETT

Victory Press Printing
Log and Timber Tags
for Inventory Control and Tracking
Timber Tags - Kiln Tags
Bundle Tags - Bundle Books
CCA Treatment Tags - WIP Tags
Barcodes, Large Numbers, QR Codes
www.victorypress.com.au
Call 1300 300 251
Email: info@victorypress.com.au

TimberTrader
news
**subscribe
now**
for your printed magazine

 **Wood
Solutions**
design and build
www.woodsolutions.com.au

 **Responsible
Wood** rw/1-10-1
2023/24
Community
Grants Program
launched!
Click here.



**STAY SAFE
ON SITE**

Talk to our WHS Officers for
Health Checks and Training



ntha.com.au > WHS



1800 822 621

Vale John Halkett

As much a force of nature as the trees he loved, John Halkett has passed away suddenly, aged 76.

JOHN Halkett was the Co-founder of Timber Media Australasia, managing director of Forestlands Consulting and the general manager of the Australian Timber Importers Federation. He wrote multiple books and scientific papers on the importance of trees and forests in the world and was a powerful font of enthusiasm and expertise for forestry in the Australasian region and beyond. He passed away suddenly on the afternoon of 10 October at his home in Potts Point, Sydney.

If you were fortunate enough to meet John, you would quickly learn three things about him: he loved his family, he loved trees and he loved New Zealand, his birth country.

A graduate of the School of Forestry at the University of Canterbury, John's early career was as a forester in New Zealand, focusing on resource management. However, his intellectual curiosity quickly led him to a wider scope, both working with industry bodies and communicating his work to a bigger audience from an early career point. He published his first book, *The World of Kauri*, in 1986, the same year he joined the editorial board of the *New Zealand Journal of Forestry*, where he was highly instrumental in modernising that august publication.

While he held senior forestry roles within the NZ Department of Conservation and also in Australia, John knew that the Australasian timber sector was never going to be self-supporting. Accordingly, he advocated for a well-regulated but accessible international trade in timber and spent much



John Halkett, general manager of Australian Timber Importers Federation, co-publisher of Timber and Forestry eNews and Timber Trader News, will be deeply missed by all those who knew him as well as the wider timber and forestry industry.

of his career focused on the issues of importing, which he believed was a route to not only address supply needs in wealthy Western nations but to improve employment and social prospects in their poorer, tree-rich neighbours. As John wrote in a 2015 editorial, "The timber industry is not an end in itself, but a means of realising key national social, environmental, and other goals." This wasn't a theoretical stance, his career took him to roles in the United States, Canada, Papua New Guinea, Myanmar, China, Chile and elsewhere across Southeast Asia and Africa and onto the board of the Global Tree Forum.

John was a keen environmentalist of the practical school. He agitated strongly against over-harvesting around the world and was instrumental in



John's books were never theoretical. This cover pic for his book, *Jungle Jive* was taken in the tropical jungles of Southeast Asia in 2016.

creating legislation that allowed for ready trade while protecting native species, both tree and otherwise. In recent decades, he worked hard to stamp out conflict timber, whether arising out of war or illegal cartels exploiting local peoples. Over multiple decades he helped develop a range of waste- and CO₂-minimising industries in Australia, and

had a dream to produce green hydrogen in the Hunter Valley.

His most recent book, *Planet of the Trees*, was uncompromising in its condemnation of decades of laggardly political response to the perils of climate change and set out a clear agenda for urgently re-focusing the debate around carbon. He was not, alas, optimistic that politicians would meet that challenge, saying towards the end that the most likely outcome was a planet we had vacated, "allowing trees and nature to reassert themselves – and perhaps over geological time a smarter breed of bipeds may inherit the Earth."

Vibrant and highly engaged in person, John was indefatigable when it came to pursuing his passions, which included friends, family and adventuring. A recent trip to Malaysia saw him canoeing down rivers past orangutans – "Between the river and the little buggers moving, it was hard to get a good photo," he reported.

John was active in the timber sector till the very end of his life, hatching plans for a Gala Industry Dinner just hours before he died. "We need to get people in the same room, talking with each other, because that's how change happens!" he said, adding, "Plus, everybody likes a good feed..."

John is survived by his daughter Jonelle and three grandchildren and much missed by his wider family and the many people he took under his wing throughout his life.

John Halkett, born Palmerston North, New Zealand, 19/10/1946, died Sydney, Australia, 10/10/2023.

“Rest in peace, John. You will be sorely missed.”

ATIF are extremely saddened by the news that our GM John Halkett has passed away.

Chair of ATIF Jacinta Colley has spoken on behalf of the board “John wasn’t just the face of ATIF, he was a force, a beacon of dedication and passion within the forest and wood products industry. He was a man whose love for his work was palpable, a man who didn’t just work to live but lived to work. John’s



The only photo we have as it was always John behind the lens – 8th October 2019... ATIF board members meeting in Brisbane: Chris Woodhouse, managing director, Woodhouse Timber; Glyn Davies, independent; John Halkett, general manager; Jacinta Colley, national sales director, Vida Wood Australia; Nils Koren, chairman; Brenton Christopher, CEO, John Cook & Sons; Robert Cairns, Frostpine; and David Meyer, managing director, Meyer Timber.

exceptional networking skills and vast political connections painted a global canvas of influence and respect. John

had a remarkable knack for juggling multiple projects, his drive and energy seemingly boundless. Yet it was his

unwavering support for the industry that truly set him apart. He departed from this world as he lived in it, his phone in his hand, immersed in the industry he loved. His passing on the 10th of October 2023 has left an irreplaceable void. His memory, however, will continue to inspire and guide us. John leaves an important legacy for his contribution to the required imported space. Rest in peace, John. You will be sorely missed.”

ATIF will update its members in due course once the board has worked through this difficult time.

IT is with deep sadness and profound shock we announce the sudden loss of our business partner, work colleague and dear friend John Halkett.

The team at Timber & Forestry Enews held a team meeting yesterday by Zoom and John was well and in good spirits as we discussed this weeks’ publication and the month ahead. The team is in a state of shock this morning, to learn that John is no longer with us and we are still trying to come to terms with this!

As the phone rings again, I quickly learn not just how many friends, industry contacts and associates have been touched by John, but also the number of people who felt mentored by John. So many people have expressed how John had touched and helped them through difficult times in



Pictured top left, John loved T&F Enews Zoom meetings; the only trick was keeping up with his agile mind.

their life. Some work colleges dated back over 50 years to his NZ forestry days and have worked with John in more than one location or at different organisations.

John was truly larger than life, could see the good in people and committed himself to what he said he would do. John was such an inspiration and passionately believed in forestry, renewables and had a positive life outlook. John will be sadly missed by so



John Halkett... pictured celebrating Yuletide in Brisbane with Timber&Forestry enews team member Zonya Bird, graphic designer, in 2018.

many people, not just in Australia and New Zealand but throughout many parts of the Globe.

October 10 will be forever etched in our memory, as the day we lost an industry gem.

The Directors and team here at Enews would like to extend our deepest condolences to John’s family, we are all feeling the loss at his sudden and unexpected passing.

When we lose a loved one, it is a time to reflect on the fond memories that have been created. John knew and interacted with so many people, companies and associations and had so many interesting stories to tell. John had the ability to remember so much and in many ways was a walking library to the timber industry.

Team Enews



A rare pic of John – 5 March 2021... L-R: Campbell McInnes, Garry Millar, John Halkett, past directors of Sweetman Renewables Limited.

NeXTimber by Timberlink presses first CLT panel, begins taking orders

TIMBERLINK'S NeXTimber facility has pressed its very first Cross Laminated Timber (CLT) panel, marking another significant milestone in the construction of Australia's only combined CLT and GLT (Cross Laminated and Glue Laminated Timber) radiata pine mass timber facility. The commissioning of this CLT line follows production of the facility's very first GLT beam in August 2023.

David Oliver, Timberlink Chief Marketing, Sales & Corporate Affairs Officer said, "The entire team has been working towards this moment since we announced construction of the facility in 2020. To see the hard work of so many come to fruition is very rewarding."

Patrick Dark, Timberlink CLT/GLT Operations

“ TO SEE THE HARD WORK OF SO MANY COME TO FRUITION IS VERY REWARDING ”



The first CLT panel pressed at the NeXTimber facility.

Manager, said "There was such an air of positivity when the panel came off the line. Everybody who has been involved in the installation, testing and commissioning of our NeXTimber equipment should be proud of what we've accomplished."



The NeXTimber facility is co-located at Timberlink's Tarpeena, SA, manufacturing facility.

Timberlink's Tarpeena, SA, manufacturing facility, can produce panels up to 16m long and 3.5m wide and will unlock significant capability to manufacture mass timber building products in Australia. Mass timber products like CLT and GLT offer an exciting alternative to traditional construction materials and can help to reduce the embodied carbon of a project.

The NeXTimber by Timberlink team are now accepting orders for CLT and GLT as the facility is scheduled for full production by the end of this month.

To learn more visit www.nexttimber.com.au.

The newly commissioned CLT line, co-located at

[nexttimber.com.au](http://www.nexttimber.com.au).



THE CHOICE IS YOURS.

Following the awarding of a Global GreenRate Level A certification, MicroPro Wood Treatment Technology has recently been awarded a GoldHEALTH rating with its recently published Global GreenTag Level A Product Health Declaration™ (PHD™).

The GreenTag PHD is the first health transparency tool in the world to assess human health concerns directly, rating the health impacts of a final product – and not just the hazards of a product's ingredients.

For more information call us now on 1800 088 809.



MicroPro® is a registered trademark of Koppers Inc. or its subsidiaries. MicroPro® timber products are produced by independently owned and operated wood preserving facilities. © 2019 Koppers Performance Chemicals Australia Pty Ltd. Global GreenRate, GoldHEALTH, Global GreenTag and GreenTag PHD are registered trademarks operated under licence by Global GreenTag Pty Ltd.

APEC forestry talkfest in Sydney

Event was strong on bureaucracy, but short of tangible actions to promote sustainable forest management and responsibility-sourced timber goals.

THE 30th Session of the Asia-Pacific Forestry Commission (APFC) held in Sydney last week brought together government forest officials, and representatives of international, and regional organisations that deal with forest-related issues. Participants discussed forest and landscape restoration, building resilience to climate change and biodiversity, among other forest-related topics. The Australian Department of Agriculture, Fisheries and Forestry hosted the meeting.

The theme for the conference was: Sustainable forests for a sustainable future. About 200 delegates and observers from more than 30 Asia-Pacific nations took part in three days of formal sessions and full-day field trips. APEC serves as a policy and technical forum for the countries in Asia-Pacific to address forest-related issues and provide advice to the Food



1/ Welcoming participants to the APEC Sydney event. Adam Fennessy, Secretary, Department of Agriculture, Fisheries and Forestry; Joel Fitzgibbon, Chair, Australian Forest Products Association; Murry Watt, Minister for Agriculture; Zhimin Wu, Director General, FAO Forestry Division; and Natasa Sikman, Acting CEO, Australian Forest Products Association..

2/ Simon Dorries, CEO, Responsible Wood ... argued the merits of initiating a pan-Pacific PEFC standard and certification scheme.

and Agricultural Organization (FAO) forestry program and forest policy.

The APEC conference was essentially a talkfest for international government forestry officials. The week-long event was strong on bureaucracy and procedure but arguably fell short of tangible actions to promote sustainable forest management and responsibility-sourced timber goals.

A notable highlight of the week's dialogue was a polished presentation by the CEO of Responsible Wood Simon Dorries and his

colleague Programme for the Endorsement of Forest Certification (PEFC) Southeast Asia Manager Richard Laity on the merits of initiating a pan-Pacific PEFC standard and certification initiative. Such an initiative was strongly supported by Pacific nations, including PNG as a way of improving the capacity to manage their natural forests and to supply high-value markets such as Australia with high-density, quality hardwoods.

In relation to Australia, it was acknowledged that such a pan-Pacific PEFC certification

scheme would provide a real opportunity for PNG and other Pacific nations to supply high-quality, valued hardwoods into a market where Victoria, WA and NSW were either terminating or restricting access to native forest for commercial log harvesting. And this at a time when the Federal and state governments have implemented stimulus financial incentives designed to strengthen house construction activity.

On the cover: Delegates and observers from more than 30 forested Asia-Pacific nations gather in Sydney.

Understanding Wood Science Course

NOVEMBER 2023 – BOOK NOW!

- Learn from experts
- Unique course program
- Wood anatomy and biological characteristics
- Processing into carbon friendly products
- Global advances in engineered wood products
- Visits to leading manufacturers

Gottstein Trust

BOOK NOW
www.gottsteintrust.org



APEC delegates visit timber remanufacturing leader in Sydney

ONE of the APEC field trips visited Programmed Timber at St Marys in Western Sydney, a leading timber processing, service and distribution company supplying to Australian and international markets.

Programmed Timber specialises in bulk timber and timber components and minimising waste. Delegates were treated to a guided tour of the processing facility, learning about processing innovations and operations.

Founder of Programmed

Timbers, Warwick Drysdale welcomed APEC delegates. He advised that the best way to summarise the business was as a “wood fibre utilisation business”.

Mr Drysdale explained that the timber purchased by Programmed Timber was low grade, not further processed

by sawmills. This low-grade timber is re-machined, scanned, and re-graded for better overall utilisation and to turn what would normally be low-value timber into higher-value products.

Last year Programmed Timbers produced 718 different product types

utilising a sophisticated range of computer-controlled machining centres that included a Microtec Scanner, that Mr Drysdale advised is the main machine and the “brain of the operation”.

“This scanner is an

Cont P 9



1/ Warwick Drysdale said low-grade timber is re-machined, scanned, and re-graded for better overall utilisation and to turn what would normally be low-value timber into higher-value products.
2/ APEC delegates inspect Programmed Timbers zero-wood waste site timber remanufacturing facility.

NTHA CAN

TRAIN AND UPSKILL YOUR EXISTING TEAM MEMBERS

- ✓ Nationally recognised qualifications and training
- ✓ Specialist industry trainers

STRENGTHEN YOUR TEAM

RETAIL, SALES, BUSINESS, SUPPLY CHAIN OPERATION AND LEADERSHIP QUALIFICATIONS

(RTO 5343)
1800 822 621
ntha.com.au

The united voice for Australia's forest industries

0408 404 764
enquiries@ausfpa.com.au
www.ausfpa.com.au

Australian Forest Products Association

Women in forestry and timber invited to come together

KERSTEN Gentle, CEO of FTMA Australia & Gentle Words put out an invitation this week for women in the forestry and timber industry to register their interest for a national women’s gathering.

Kersten wrote, “There are plans to run a National

Women in Forest & Timber Network Retreat for women from the forest and wood products industry. At this stage we are seeking expressions of interest to attend this event or to volunteer for the organising committee. To help gauge

women’s willingness to attend the WFTN Retreat or if you have time to go on the organising committee, please visit the following link and provide your details. To register your EOI, click here.

There are so many great reasons to belong to this

industry and the people, for me, are number one. Let’s help support women in the forest and wood products industry by re-establishing the national WFTN network. If anyone has any questions, they can contact me via kersten@ftma.com.au”

Women in forestry and timber (WFTN) QLD meet to celebrate charity event fundraiser

LAST week WFTN QLD hosted their quarterly breakfast where they proudly handed over the funds that were raised at the 2023 WFTN Cocktails for Charity Event that was held in Brisbane on the 9th of September in support of Brisbane Domestic Violence Service.

WFTN are proud to be associated with such an amazing organisation and



WFTN members ran a successful Cocktails for Charity fundraiser. Here (L-R): Tahlia Bellotti (NTHA), Jenni Day (Versace Timbers), Ria Wong (Brisbane Domestic Violence), Alicia Langfield (NTHA), and Jacinta Colley (Vida Wood).

would like to thank all that attended the event and especially the sponsors and donation partners.



Passion of support delivered by Jacinta Colley (Vida Wood) to Ria Wong (Brisbane Domestic Violence).


WFTN QLD will be releasing a Christmas newsletter which will include key dates for breakfasts and events in 2024. If you

would like to be included in the communications please visit <https://www.ntha.com.au/membership/women-in-forests-timber-network-wftn/>

Supporting regional forest communities...
through our small grants program.



responsiblewood.org.au



PERI Australia becomes a supply chain member with Responsible Wood

RESPONSIBLE Wood has welcomed a new supply chain member, PERI Australia into its ranks. Simon Dorries, the CEO at Responsible Wood recognised and commended PERI Australia for their commitment to sustainability in forests and supply and their responsible sourcing and supply chains. Dorries stated: "As a not-for-profit standards development organisation supporting efforts to promote sustainable forest and responsible forest product supply chains, we welcome PERI's valuable contribution. This is another great example of an organisation that walks the walk when it comes to



PERI actively involved in building schools in developing countries.
Photo: Shutterstock

responsible sourcing and sustainability. This support reinforces PERI's dedication to transparent supply chains, responsible timber sourcing and promoting healthy and productive forests."

PERI Australia has been on a sustainability journey that displays its dedication to climate neutrality, biodiversity preservation, responsible timber sourcing and supplier evaluation. It is a great example of a company that is doing its best for a sustainable, economical, and environmentally sound future in this industry.

been offsetting carbon emissions since 2021 to ensure its carbon footprint is as small as possible.

- 20,000m² of land at PERI are dedicated each year to become space where the company coexists with nature and aims to help biodiversity grow across its land.
- PERI not only cares about the environment and biodiversity but also in educating the upcoming generation. PERI is actively involved each year in building schools in developing countries to help foster the minds of young children and develop communities.

- Responsible Wood highlighted PERI's advocacy of the circular economy stating "PERI has embraced the principles of the circular economy. Through innovative rental models, both PERI and its customers contribute to reducing their ecological footprint, showcasing a meaningful commitment to sustainability."

- PERI holds a PEFC ST 2002 chain of custody certificate. This demonstrates its commitment to ensuring all its products are sustainable in growth health and biodiversity.

There is much more that PERI supports in the community, all these are detailed in its annual sustainability reports. In each report you can also find its goals both medium and long term to continue improving into the future.

“LARGE TRADER OF ENGINEERED WOOD PRODUCTS WORLDWIDE

INTRODUCING PERI AUSTRALIA

PERI Australia is a large trader of engineered wood products worldwide; it provides sustainable solutions both nationally and internationally. It is recognised for transforming sustainable construction practices. PERI Australia has several key initiatives that really display its real commitment to a brighter future.

- Climate Neutrality: PERI Australia is a climate-neutral company. PERI has



Develop our future workforce

ForestWorks is an industry-owned not-for-profit organisation offering services to support the skills development of the forest, wood, paper, timber and furnishing industries.

ForestWorks works with industry, government and the education and training sectors to improve skills standards and qualifications and support the development of forestry-related industries, their people, and enterprises.

To find out more:

Email: forestworks@forestworks.com.au
Phone: 1800 177 001
www.forestworks.com.au

OCTOBER

15-18: 2023 ANZIF Conference – Twin Towns Conference Centre, Tweed Heads, NSW.

The Conference is an exciting joint event from both Forestry Australia and The New Zealand Institute of Forestry. The theme of the conference, “Embracing Our Natural Capital: The Science, Technology and Art of Managing Forests For All Values”, will facilitate conversation and collaboration – highlighting the need for active and adaptive management of our natural capital using evidence-based and emerging innovation, technology, skills and knowledge to support our forests and secure our future. For full details, visit www.forestryconference.com.au

[forestryconference.com.au](http://www.forestryconference.com.au)

17: MGA TMA 2023 Final Industry Event – The Views, Life Saving Victoria, 200 The Boulevard, Port Melbourne.

MGA TMA's final industry event for 2023 will feature industry presentations and networking for members and non-members alike. Guest speakers Boris Iskra, Director, Wood Products Victoria and Kevin Peachey, Head of Built Environment Programs, Forest and Wood Products Australia will be presenting while breakfast is served. For details, visit <https://www.trybooking.com/events/landing/1119848>.

23-25: Global Woodchip And Biomass Trade Conference And Networking Event – Singapore. Following on from

the inaugural 2022 DANA-Gingko event last year, the organisers are once again bringing together international experts to discuss the issues facing the trade. The three-day event includes comprehensive networking opportunities and will be followed by a post-conference field trip. For more details and to book, visit <https://danaevents.co.nz/2023singapore/home>

27: GTTIA Gala Dinner and Awards Night – The Barn, Mt Gambier, SA. Tickets now on sale at www.gttia.com

NOVEMBER

9-10: Sustainability summit and awards 2023 – Sydney.

The event begins with the summit, with its topics ranging from the Brisbane

2032 Olympics builds to Designing for Resilience and Sustainability Certification and Compliance, held at Allianz Stadium in Sydney and online. Then on Day 2, the prestigious awards will be held at the Sydney Cricket Ground. Tickets start at \$149. Visit www.sustainablebuildingawards.com.au/#s-summit

12-17: Gottstein Understanding Wood Science Course – Canberra. Companies and interested individuals are encouraged to register their place/s soon to ensure they do not miss out on this respected learning opportunity. Full details at <https://gottsteintrust.org/grants-courses/understanding-wood-science-course> or email team@gottsteintrust.org

From P 4

extremely smart multi-sensory scanner and scans up to 150 metres per minute employing two sets of lasers, looking at the grain, straightness, dimension as well as the wane of each board. The scanner has cameras for knot detection, and appearance, plus an X-ray that scans the internal features,” he said.

Programmed Timbers also runs a double-end trimming machine and has an in-house

H2.F treatment spray booth to provide customers with the option of having a range of timber products treated.

Drysdale explained that while the costs of being located in Sydney are higher than regional areas, where sawmills were commonly located, a Sydney location puts Programmed Timbers in the middle of a large marketplace.

He supplies pre-cut material to a wide range of local clients, mostly focussed on the frame and truss

sector. The company also supplies finished products into the Victorian market.

Drysdale’s team does the repeat jobs that aren’t economical for producers to do themselves and sets up regular deliveries for major customers to reduce their admin work – as well as

reduce their need for storage space. But it’s more than just the businesses that benefit from this sustainable approach.

“Programmed Timbers is a zero-wood waste site. Everything from the timber that comes into our yard is utilised, including the shavings that go to poultry farms and the sawdust, which goes to a particle board manufacturing facility,” Mr Drysdale concluded.

“SCANNER HAS CAMERAS FOR KNOT DETECTION, AND APPEARANCE

Do you crosscut timber packs at ±1mm accuracy
OR cut structural timber, panel products (MDF & LVL), paper rolls
OR produce pallet dimensions or studs on fixed lengths

HOLTEC has a solution for you

For more information contact:
 Ph: +64 9 416 8294
 Fax: +64 9 416 8296
 Email: sales@holtec.org
 Web: www.holtec.org

HOLTEC
 YOUR PARTNER FOR THE PERFECT CUT

Our Scope of Supply:
 • Mobile and stationary chainsaws
 • Timber crosscut stations
 • Log cutting stations
 • Circular saws
 • Mechanisation
 • Sorting lines
 • Scanning and optimising systems
 • Special systems

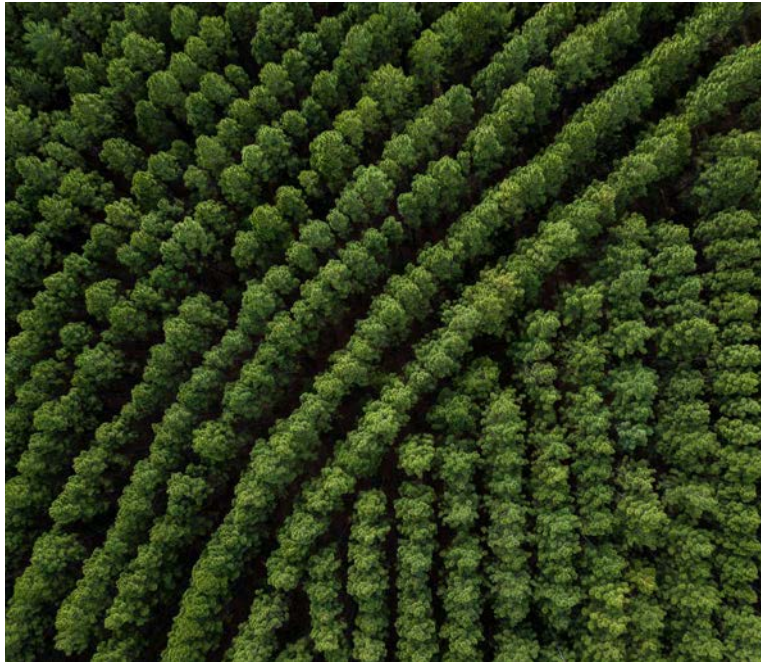
ABARES report shows continued decline in Australia's plantation estate

AUSTRALIA'S plantation estate is still on a worrying downward trajectory, according to the latest Australian Bureau of Agricultural Economics (ABARES) figures. Australia's total plantation area contracted to 1.716 million hectares in 2021-22 - a reduction of more than 28,000 hectares.

Acting Chief Executive Officer of the Australian Forest Product Association (AFPA), Natasa Sikman said, "This continued decline in Australia's plantation estate is extremely concerning and is a reminder that collectively, industry, federal and state governments and other decision and policy makers need to work together to get more timber trees planted for the future.

"In the same reporting period, there was a small increase in new plantations of 2300 hectares (hardwood: 1,181 ha and softwood: 1119 ha) but these new plantings will not be enough to meet future demand.

"Australia's national plantation estate has fallen by more than 250,000 hectares from 1.973 million



Plantation estates still on a decline... the small number of new plantations established will be insufficient for future demand. Photo: Shutterstock

hectares in 2014-15 to 1.716 million hectares in 2021-22. Australia is currently importing over \$6 billion worth of wood products and we already rely on imports for up to 25 per cent of

the timber needed to build Australian houses. As the Government looks to build 1.2 million new houses over the next five years, our reliance on imported timber will dramatically increase.



His Majesty King Charles III visited James Jones & Sons Ltd Aboyne sawmill recently. Photo: Scottish Construction Now

"We know that global demand for timber and wood fibre products is forecast to quadruple by 2050 and it is why we see countries such as the United Kingdom including timber use into their Net-Zero Strategy. The key element of the UK strategy is to increase public demand for sustainably sourced timber through procurement policies and encouraging research into barriers to the uptake of timber. Indeed, recently King Charles visited James Jones and Sons where he discussed the significant benefits of productive forestry a company which partners with Australian-based Hyne Timber and XLam.

"AFPA supports the Federal Government's commitment to plant one billion new production trees and Australia's forestry sector recognises the work and investment by the Albanese Government, but more is needed to reverse this downward trend in our plantation estate while also increasing the use of timber in the construction sector.

"An increased plantation estate alongside a strong native sector will be critical for Australia to meet its own net zero goals while also contributing to the global climate change fight," Sikman concluded.



Are you following us on social media?

Please like and share our page so we can get the timber and forestry message out to a bigger audience. If you like our publication, please leave us a review.



Timber in the carbon economy

THE world's climate and its forests are intrinsically linked. Forests are an important component of the global carbon cycle, playing multiple roles in addressing climate change.

This has been recognised by the International Panel on Climate Change in its 4th Assessment Report:

"In the long term, a sustainable forest management strategy aimed at maintaining or increasing forest carbon stocks, while producing an annual sustained yield of timber, fibre or energy from the forest, will generate the largest sustained mitigation benefit."

The world's forests and soils store more than one trillion tonnes of carbon, twice as much carbon as is in the atmosphere. Forests have the potential to absorb about 10-20 per cent of the total global emissions projected for the first half of the 21st century.

TIMBER IS MUCH MORE THAN A COMMODITY

New South Wales' forests and wood product industries contribute to long term carbon emissions abatement in numerous ways, including:

- capturing and storing atmospheric carbon in growing forests
- protecting forest carbon stores from damaging wildfires
- providing long-term storage of carbon in durable wood products
- providing a renewable substitute for much more



Growing forests capture carbon and help to combat greenhouse gas emissions. Photo: Shutterstock

emissions-intensive building materials, such as steel, aluminium and concrete

- replacing carbon-intensive fossil fuel sources such as coal, oil and gas with bioenergy from wood waste, forest thinnings and harvesting residues.

Many timber products also undergo a significant phase of recycling, further extending the carbon storage.

USING TIMBER TO REDUCE CARBON EMISSIONS: FORESTS & CARBON SEQUESTRATION

Powered by sunlight in a process called photosynthesis, growing trees 'sequester' carbon dioxide from the atmosphere and store the carbon. About half the dry weight of a tree is carbon.

In fact, for every dry tonne of timber produced, 1.8 tonnes of carbon dioxide is taken from the atmosphere. This carbon remains 'locked up' for the life of the wood, even when it is used for building products or furniture, helping to offset global greenhouse gas emissions.

The rate and extent to which trees sequester carbon is influenced by many factors including species, site quality, climate and forest management. Trees sequester carbon more rapidly during their peak growth period between 10 – 30 years of age.

If a tree is not harvested, its carbon sequestration rate slows after it reaches maturity, which is about 40 years for softwood and 80 years of age for hardwood. Beyond this point, the rate of sequestration flattens as carbon captured from new growth is offset by the release of carbon from parts of the tree which begin to decay and are shed.

A RENEWABLE, LOW ENERGY ALTERNATIVE

The carbon benefits of wood also include the lower energy requirements needed to manufacture them, by comparison with alternate materials. This advantage is particularly important for the construction industry.

The processes required to produce metal (such as steel or aluminium) or plastics,

which are derived from petrochemicals, create significant amounts of greenhouse gas emissions.

In contrast, it takes far less energy to produce timber for use as a building material.

It generally requires around 19 times more energy to

make a product from steel rather than from kiln-dried hardwood; 45 times more to make a plastic product; and 85 times more energy to make a comparable aluminium product.

Remembering that timber products also act as a long-term storage for carbon, the comparative advantages of timber products are significant.

Sometimes these benefits go unrecognised, because energy rating schemes and environmental assessments are not based on full life cycle assessments of the products they compare.

SUSTAINABLE PROCUREMENT

Activities that lead to an increase in greenhouse gas emissions include the burning of fossil fuels, increased mining and the clearing of land for agriculture and housing. In a sustainably managed forest, logging is balanced by regrowth. If done sustainably, logging does not lead to deforestation.

Source: NSW Forest Products Association

San Antonio Spurs train in largest mass timber training facility in the U.S.

'THE Rock at La Cantera' is the brand new practice facility that is a part of the USD \$500 million new development in La Cantera, Texas. The San Antonio Spurs basketball team will be using this exciting new facility to train for their upcoming 2023/2024 season.

The Mass Timber Group shared that the practice facility includes "practice courts, environmental training rooms, therapy pools, sensory deprivation tank, team dining room, and a performance kitchen". This centre is truly a marvellous space for the Spurs to call home. It is the largest mass timber construction in Texas at 12,449m2 and the largest mass timber training facility



in the United States. The Mass Timber Group shared that "Each glulam beam is 130 ft long, 6.5 ft tall, and weighs 13-tons". It is truly a fantastic construction built to be not only stunning but also impressive in its design.

The Mass Timber Group also credited the various



1/ **The new facility, The Rock at La Cantera, Texas.** Image: TheRockatLaCantera
 2/ **Spurs team mid game after training hard at the new Rock facility curtesy Spurs.** Photo: San Antonio Spurs Facebook page

groups that were the brains and creativity behind the project, "Project Team - Engineer: Arup - Architect: ZGF Architects

- CM: Joeris General Contractors, LLC - Mass Timber Installer: Timberlyne Group - Mass Timber Hardware: MTC Solutions
- GLT Beams & Columns: American Laminators - CLT Panel Manufacturer: SmartLam North America™ "



Some standards enforced in Australia originate from international certifying bodies

Think Global (not just Local)

Always purchase appropriately certified imported timber products



Australian Timber Importers Federation Inc
www.atif.asn.au



Major NZ mass timber builder signed

Naylor Love to build new Fisher and Paykel HQ.

WHITEWEAR giant Fisher & Paykel Appliances has signed up one of New Zealand's biggest builders for a radical new three-building \$220 million global headquarters.

Mark Elmore, vice-president of design and brand for the Kiwi appliance brand, said today Naylor Love was contracted for two of the three new Penrose buildings, with the third to be a carpark. Work is yet to begin as a tenant on the site is yet to complete their lease.

"For us, this is the next platform for Fisher & Paykel Appliances to grow globally – a purpose-built research and design facility very close to a train station," Elmore said.

A three-level cross-



The first look at Fisher & Paykel's new global headquarters by RTA Studio.
Image: Render supplied

laminated mass timber office block is planned for the site at 830 Great South Rd, with designs completed by RTA Studio and consultant project manager TSA Management.

"That's intended to minimise embodied carbon and be efficient during the life of the building. In terms of New Zealand, it will be a pretty large-scale mass

timber structure," Elmore said.

Bruno Goedeke, Naylor Love Construction's regional manager for Auckland, Waikato and the Bay of Plenty, said the business had signed an early contractor involvement agreement for two of the three buildings planned at the site. Such contracts allow builders to

become more closely involved in the preliminary work, leading to greater time and cost savings on mass timber projects, as well as better realisations of the building thanks to planning decisions being made with the

end materials and building processes in mind.

Naylor Love has positioned itself as one of New Zealand's leading builders when it comes to mass timber and has made sustainable construction a key point of difference for its company.

Source: NZ Herald

arxada

Always in demand

TRUST Ecowood®

TREATED TIMBER PRODUCTS

Ecwood® is a registered trademark of Arxada or its subsidiaries. ©2022 Arxada

Australia's regional partner pretence

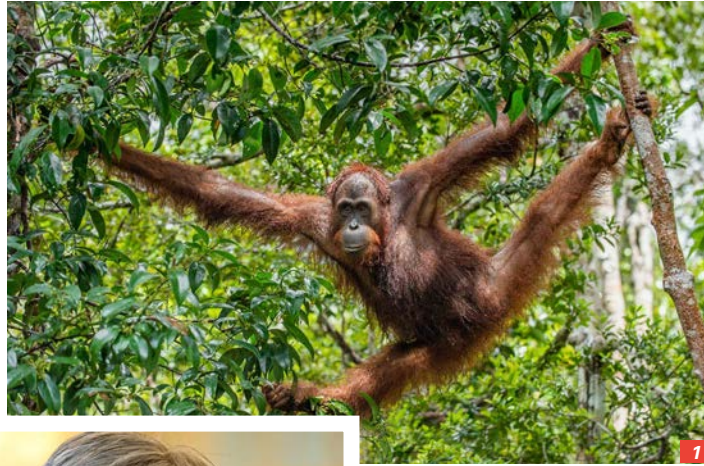
Australia talks a good talk about regional responsibility but doesn't always match it when it comes to actions.

THE other day Derek said, 'you should stay in your lane, Cheryl. I think he meant sticking with a business, like worrying about paying the leases on equipment, meeting fuel and other running costs, making sure that the troops are safe and paid, and arguing with those guys in white utes about production volumes and rates. Well, yes, I guess that is my lane on a day-to-day basis but that hasn't stopped me from commenting about other matters in the past I think are of broader interest to the forest industry. So here I go again, Derek.

I reckon many would agree that whilst Australia talks the talk about being a responsible regional partner in the context of Southeast Asia and the Pacific, we continue to demonstrate that this is more in the saying than in the doing and displays a large helping of hypocrisy.

We have the foreign minister swanning about Southeast Asia and beyond telling all who will listen that we take our responsibilities as a regional partner seriously and that we want to handle things of mutual interest equitably. Sounds great but the evidence would suggest otherwise.

And yes, I do not pretend to be a foreign affairs expert, but for example leaving it until after the deal was signed to tell important northern neighbours, including



1/ Transferring the responsibility for providing hardwood products to our northern neighbours with no regard to their capacity to supply or the impact on their domestic biodiversity and other environmental values.

2/ Penny Wong ... telling all who will listen that we take our responsibilities as a regional partner seriously, but the evidence would suggest otherwise.

Indonesia, that we plan to operate nuclear-powered submarines in the region went over like a cold shower on a winter's morning. Then we tell small Pacific nations that face the prospect of disappearing beneath rising sea levels that we are thinking about climate change abatement measures but exhibit little real evidence on the ground.

But the action that really makes me feel uncomfortable and demonstrates our blatant hypocrisy is the decision without any regional dialogue that it is in our interests to shutdown at our native forest-based hardwood production

handball the responsibility for providing hardwood products to our expanding building and construction sector to our northern neighbours. This with no regard to their capacity to supply or the impact on their domestic biodiversity and other environmental values. This is how we demonstrate being a responsible regional partner works for us.

We are saying to regional partners: "you send us the hardwood timber we need, even though we could supply it ourselves, but we would rather transfer the environmental impacts to you with your less sophisticated forest management practices. This because we want the votes of inner-city dwellers and don't already care about biodiversity and environmental values across Southeast Asia." So, this is Australia's responsible regional partner relationship in action. I wonder how our foreign minister Penny Wong explains this to her counterparts in Jakarta and KL, and other country capitals across Southeast Asia.

So sorry, Derek, I have strayed outside my lane this month, but I do think I have tried to make a point worth making. Clearly, continuing on with the management of our native forests for sustainable timber production and showing more than just a pretence about our regional partner responsibilities would be a much more sensible and sensitive way to go. That's what I reckoned anyway.

Catch you again next month.

Cheryl

TRUNK LINES



With **CHERYL FORREST**

operations and then expect our regional neighbours to pick up the slack and provide us with a much-increased supply of high-quality hardwood timber. This really smacks of a lack of empathy for the situation across the region and of hypocrisy in the extreme.

So, for crass political reasons, we're going to convert sustainably managed production forests to national parks in Victoria and WA to appease inner-city greens and

“ WE WOULD RATHER TRANSFER THE ENVIRONMENTAL IMPACTS

KOMATSU

Komatsu 895.2

SpeedShift



New Intelligent Transmissions for Increased Productivity

The new Komatsu 895.2 Forwarder offers increased productivity with two unique transmission options;

- SpeedShift ... gear change "on the fly" with high 262 kN torque
- Xtreme ... severe/steep conditions with very high 307 kN torque
- New Maxi XT Control System

Komatsu Forwarders lead the way in production

KOMATSU
Creating value together

Komatsu Forest Pty Ltd.
11/4 Avenue of Americas
Newington NSW 2127 Australia
T: +61 2 9647 3600
E: info.au@komatsuforest.com

A spark of hope in the international market

Insiders invest in West Fraser Timber.

SIMPLY Wall St is a stock market analysis company that wrote an article about the recent investments made by insiders at West Fraser Timber. Simply Wall St notes that whilst shareholders should not base their transactions on the transactions of insiders, they do consider it valuable information and worthwhile paying attention to what they are doing. In the past twelve months multiple insiders have made purchases and the Director of West Fraser Timber, Eric Butler, made the largest insider purchase. Mr Butler purchased CAD \$474k of shares with each share costing him CAD \$94.72. This is CAD \$2.44 higher than the recent price.

Simply Wall St identifies that insider purchases tell shareholders that those who are involved in the company at the time of purchase have confidence in the company's future. When insiders pay above the current price, Simply Wall St states it is "generally more encouraging ... as it suggests they saw value, even at higher levels."

Simply Wall St provided

“ SUGGESTS THEY SAW VALUE, EVEN AT HIGHER LEVELS ”



Canadian forests... a resource that is invaluable for ongoing sustainability of timber products (unrelated file image).
Photo: Shutterstock

Who is West Fraser Timber?

WEST Fraser Timber began in 1955 when three brothers, Sam, Bill, and Pete Ketchum bought their first small mill in Quesnel, B.C. Canada. They started out with only 12 dedicated crew members. Today, after six decades, they have over 60 facilities across two continents. West Fraser Timber is now the largest lumber producer in North America. They have been recognised consistently as a top employer and are committed to sustainable practices from forestry to production.



West Fraser Timber began with a small mill in 1955 (unrelated file image).
Photo: Shutterstock

charts showing that over the past 12 months insiders at West Fraser Timber have not only been buying shares but also not selling them which is another sign that they have optimism about the future and growth of the company.

HOW DOES THIS AFFECT US?

Considering the extensive fires that raged across Canada this year, that we covered in a previous issue, this is good news for the ongoing sustainability of timber products in Canada. With some Australian state governments shutting down native forest logging, Australian businesses that are dependent on timber products must closely watch the international markets as they will become valuable and necessary source for our ongoing timber products.

Source: Simply Wall St



DO YOU HAVE NEWS TO SHARE?

Send media releases, news stories, events, any timber and forestry news related information with us anytime to Nicky, Donyale and Jess -

news@timberandforestrynews.com

edit@timberandforestrynews.com : jessicah@ttnews.com.au



Contact Nicky, Donyale or Jess today...

GREEN TRIANGLE TIMBER INDUSTRY AWARDS



Gala Awards Dinner
27 October 2023

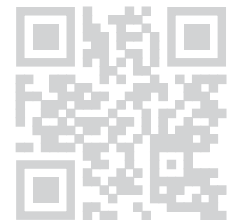
2023 Gala Dinner

Tickets on sale 4 September
Oct 27, 2023 At The Barn, Mount Gambier



Thanks to our travel sponsors you will once again be able to travel safely to and from the gala using the C3 shuttle bus

Tickets on sale via www.gttia.com



Return services available from both Portland and Mount Gambier.

Thank you to our 2023 Sponsors

Gold Sponsors



Silver Sponsors



Bronze Sponsors



New York City boosts decarbonisation efforts with timber

NEW York City has an estimated population of 8.4 million people along with an estimated 1 million buildings. That's a lot of CO₂ emissions! In fact, 40% of annual global CO₂ emissions come from the built environment. That's why the New York City Economic Development Corporation (NYCEDC) has created the NYC Mass Timber Studio to help the Big Apple decarbonise.

NYC Mass Timber Studio has created a program to support mass timber development projects in their early phases of planning and design. The program offers incentives to applicants such as grants of \$25,000, which will be awarded to projects

“**BOLD STEP TO DRIVE THE GREEN ECONOMY**”



New York City is endeavouring to lower CO₂ emissions across the board. Photo: Shutterstock

with the most technical and economic feasibility. The goal? Create sustainable building material with low carbon footprints.

“As a low-carbon alternative to concrete and steel, the deployment of mass timber construction in New York City will be another bold step to drive the green economy while meeting the City's ambitious climate goals,” said NYCEDC President and CEO Andrew Kimball.

The NYC Mass Timber Studio also aims to raise public awareness of the benefits and beauty to building with mass timber, foster relationships between design teams for sustainable building, identify new development opportunities for sustainable timber, and create new jobs and businesses by expanding mass timber construction. By drawing interest to timber construction, the NYC Mass Timber Studio is helping the

environment, the City and the people.

“The Mass Timber Studio will help connect design teams and industry professionals with investment and technical assistance, will spur industry growth, and teach us lessons about how building code and policy can support clean, sustainable construction,” said Victoria Cerullo, Acting Executive Director of the Mayor's Office of Climate & Environmental Justice.

Innovative timber and steel blend will create more sustainable construction

DURING these difficult times where building supplies have been hard to come by and sustainability is becoming increasingly important, it is exciting to see people striving to create sustainable building solutions.

One of these people

“**CREATING A NEW BUILDING MATERIAL**”

is Griffith University PhD Candidate, Shelley Karkoodi. She has spent a lot of time working hard to create an innovative steel-timber blend for sustainable construction. Karkoodi is using structural analysis, computer simulation and new design rules to create the material that she feels will give the industry a more sustainable and robust advantage.

“Australia has very good



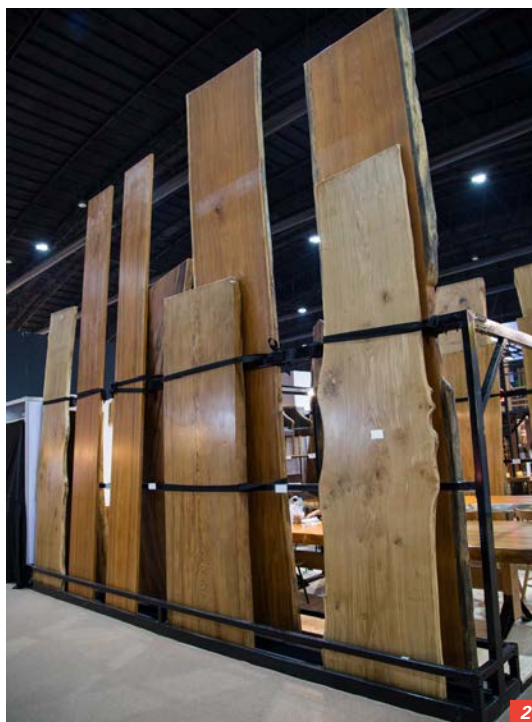
Griffith University PhD Candidate, Shelley Karkoodi. Photo: Griffith News

sources of timber. I came to Griffith to do PhD research on creating a new building material with timber and steel that is more sustainable and robust” said Karkoodi.

Karkoodi wrote a paper on the new material she has created; you can read that here. It is encouraging and exciting to see PhD candidates exploring options that will improve the timber and building industries.

Solid slabs

A unique way to incorporate timber into your home and business!



- 1/ A wooden slab becomes a coffee table and home for a plant.
- 2/ Raw wooden slabs, each one uniquely sized.
- 3/ A unique coffee table made from wooden slab and resin.

All photos: Shutterstock

THIS magazine is all about timber, from seedlings to forests, from planting to harvesting and all the amazing things you can do with timber. Timber is an amazing, versatile, and sustainable material and there is a lot that can be created from trees. News mainly focuses on discussion about buildings and homes made from timber products but that is not the only way your home or business can incorporate timber in your look and feel.

Solid slabs are a unique way to bring the timber into your space. Slabs retain carbon so each piece is not only a renewable material but also helps to lower carbon! Solid slabs also come with many different options from art pieces to side tables and even conference or dining tables.

There are many ways to use a solid slab that transform it into a stunning piece that can be admired by all your visitors. The best part is that every slab is unique, so everyone can find a piece that is perfect for them!

Paul Downs wrote a case study on solid wood slabs for tabletops. Paul started making custom tables in 1986 in Philadelphia in a little one room shop and now has a huge warehouse and 22 employees in Pennsylvania which shows how popular custom timber slabs can be.

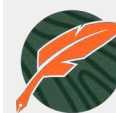
When sharing about why solid wood slabs are so

“UNIQUE WAY TO BRING THE TIMBER INTO YOUR SPACE

popular Paul stated, “People buy slabs because they like the natural appearance of the live edge, and the interesting characteristics of the wood: the knots, the cracks, and the figure. Slabs are lovely to look at and lovely to touch. People buy slabs because they like the natural appearance of the live edge, and the interesting characteristics of the wood: the knots, the cracks, and the figure. Slabs are lovely to look at and lovely to touch.”

Paul provides several tips to help people find the best producers of slabs. In his case study, Paul also covers what people can do to lower the expense and a few things not to do even though it seems like it would save money.

You can find the case study here.



Timber Media
AUSTRALASIA

Timber & Forestry enews an authoritative and rapid deliverer of news and special features to the timber and forest-based industries in Australia, New Zealand and internationally. Enews is delivered weekly, every Thursday, 48 weeks of the year. Advertising rates are competitive with other industry publications. Timber & Forestry enews hits your target market – every week, every Thursday!

HEAD OFFICE

Timber Media Australasia Pty Ltd
57 Darlinghurst Road,
Potts Point, NSW 2011
PO Box 69, Potts Point, NSW 1335
Phone // +61 (02) 9356 3826
Mob // +61 (0) 417 421 187

PUBLISHERS

John Halkett // +61 (0) 417 421 187
johnh@timberandforestryenews.com
Dennis Neilson // +64 (0)7 349 2764
dana@dana.co.nz

EDITORS

Nicky Ainley
news@timberandforestryenews.com
Donyale Harrison
edit@timberandforestryenews.com
Jess Hockridge
jessicah@ttnews.com.au

ADVERTISING

Campbell McInnes // +61 (0) 406 223 007
campbellm@timberandforestryenews.com
advertising@timberandforestryenews.com

ACCOUNTS

Chris Parker // +61 (0) 413 710 203
cparker@ttnews.com.au

The information contained in this publication has been obtained from sources assumed to be reliable. However, the publishers disclaim all warranties as to the accuracy, completeness, reliability or adequacy of the information displayed. Opinions expressed in Timber & Forestry enews are not necessarily those of directors or the Timber & Forestry enews team. We do not accept responsibility for any damage resulting from inaccuracies in editorial or advertising. The publishers are therefore indemnified against all actions, suits, claims or damages resulting from content in this publication.

CLASSIFIED ADVERTISING

PRODUCTS & SERVICES

FOR SALE

• **FRAMEQUIP AUTO NAILER FRAMING MACHINE** – Owned since new, approx 3 years old. In very good condition. Available 1st WEEK OF NOVEMBER. **\$57K + GST**

• **2008 MISER SAW** – Complete with infeed deck and outfeed race. Also includes printer. Available immediately. **\$50k + GST**



Email all enquiries to:

orders@sctimber.com.au

EMPLOYMENT

LATEST JOBS:

Click this link to advertise online...

ADVERTISING PACKAGES

PACKAGES:

Click this link to learn about advertising packages...

ADVERTISING RATES



DISPLAY AD RATES

All pricing below is excluding GST and are based on a weekly booking. Overseas bookings are exempt from GST.

FULL PAGE: \$510

297mmH x 210 mmW

HALF PAGE: \$305

Vertical • 256mmH x 93mmW

Horizontal • 125mmH x 190mmW

QUARTER PAGE: \$195

Vertical • 125mmH x 93mmW

Horizontal • 63mmH x 190mmW

THIRD PAGE: \$225

Horizontal • 73mmH x 190mmW

PAGE 1 Front cover strip:

Contract booking

Horizontal • 32mmH x 200mmW

PAGE 1 Front cover module:

Contract booking

Horizontal • 45mmH x 50mmW

PAGE 2 below story: Contract booking

Horizontal • 73mmH x 190mmW

CLASSIFIED ADVERTISING

JOB ADS: ONLINE ONLY

BUY & SELL ADS: ONLINE & IN PUBLICATION

744pxH x 720pxW

TERM DISCOUNTS

12 WEEKS: 7.5% 24 WEEKS: 10%

48 WEEKS: 15%

ADVERTISING DEADLINES

Display ads: Book by 9am Tuesday prior to publication

Supplied artwork: Wednesday 12 noon prior to publication. Supply hi-res jpg or pdf to our specifications. **NO crop marks or bleed required.**

Classified advertising: JOB ADS ARE COMPLETELY ONLINE.

Go to www.timberandforestrynews.com/post-a-job/ to place a job vacancy. **Book and pay online by 12noon Wednesday prior to publication.** Job ads are for individual positions. If more than one position is to be advertised, separate ads will need to be created and advertised accordingly.

BUY & SELL ADS ARE ONLINE & IN PUBLICATION.

Go to www.timberandforestrynews.com/product/buy-sell-advertisement/

to place an ad. **Book by 5.00pm Tuesday prior to publication.**

PAYMENT TERMS

New clients invoiced on booking. Existing clients 14 days.

WHO TO CONTACT

Media releases and editorial:

Nicky Ainley e: news@timberandforestrynews.com and

Donyale Harrison e: edit@timberandforestrynews.com

Display ad bookings:

Campbell McInnes e: campbellm@timberandforestrynews.com

Accounts:

Chris Parker e: cparker@ttnews.com.au



TIMBER TESTING CENTRE



Providing independent and experienced testing of wood products.

+61 7 3250 3777

inbox@timbertc.com.au

