

DELIVERED  
WEEKLY TO  
**15,200**  
GLOBAL  
READERS\*

Like and  
follow us on



ISSUE 762 // July 6, 2023

# timber & FORESTRY *e*news



## Timber on show at Malaysian Wood Expo

COVER STORY P 4

**ForestFit**  
BUSINESS, SAFETY AND  
ENVIRONMENTAL SYSTEMS  
CERTIFICATION  
[www.forestfit.com.au](http://www.forestfit.com.au)

**Wood  
Solutions**  
design and build  
[www.woodsolutions.com.au](http://www.woodsolutions.com.au)

**Victory Press Printing**  
**Log and Timber Tags**  
for Inventory Control and Tracking  
Timber Tags - Kiln Tags  
Bundle Tags - Bundle Books  
CCA Treatment Tags - WIP Tags  
Barcodes, Large Numbers, QR Codes  
[www.victorypress.com.au](http://www.victorypress.com.au)  
Call 1300 300 251  
Email: [info@victorypress.com.au](mailto:info@victorypress.com.au)

**Responsible  
Wood** rw/1-10-1  
2022/23  
Community  
Grants Program  
recipients announced!  
**Click here.**

All under  
one roof  
**BENEFIT  
FROM:**

RECRUITMENT

TRAINING

WH&S

EMPLOYMENT

IR SUPPORT

AND MORE!

**NTHA**  
NATIONAL TIMBER &  
HARDWARE ASSOCIATION

1800 822 621

# More people to take up trade with Tool Skills Day

IN partnership with Empowered Women in Trades, OneFortyOne recently welcomed 16 women on-site to take part in a Tool Skills Day at their Jubilee Sawmill.

Connected through the PINE Community Grants Program, Empowered Women in Trades facilitated the day at the local sawmill, including practical activities and positive psychology sessions.

OneFortyOne Jubilee Sawmill general manager Nigel Boyd said the Tool Skills Day was a unique opportunity for new people to see beyond the gates and meet the Jubilee teams.

“For us, it was also an amazing chance to discover how much passion and potential is out there,” Nigel said.

“Throughout the day the women who attended realised how much capability they already had, even if they had no prior experience or if their past experiences initially seemed unrelated. They had transferable skills, and most importantly the drive to learn.”

Part of the day included



**Tool Skills Day participants, Jubilee Maintenance team members, and Empowered Women in Trades program managers finish the day.**

positive psychology sessions run by EWIT, helping participants with the skills and confidence to enter a male-dominated workplace.

The hands-on activities included manufacturing an extension lead, and heat mapping with the support of the Jubilee Maintenance team.

Abby Thompson attended the Tool Skills Day and said the experience grew her passion to take up a trade.

“I really liked the practical tasks and learning how the



**Hallie Franks, Jaimee Smith, Abby Thompson with their tagged and tested extension leads.**

tools and equipment worked,” Abby said.

“I’m really interested in a trade, building and fixing things just feels like a natural fit for me.”

“On the day I learned how to make an extension lead,

how the mill works, and also gained knowledge to help me choose a career.”

“I’ve already applied for the OneFortyOne apprenticeship program.”

Nigel said that the day opened a new pathway to connect with a different demographic, compared to the traditionally male-dominated workforce.

“The interest from women, and the capability, is definitely out there,” Nigel said.

“It’s just a matter of giving someone different a chance and creating pathways like this to make this possible.”

The OneFortyOne apprenticeship program is still open for applications for electricians, mechanical fitters, and saw technicians until Wednesday 5th of July. For more information see [www.onefortyone.com/careers](http://www.onefortyone.com/careers).



## THE CHOICE IS YOURS.

Following the awarding of a Global GreenRate Level A certification, MicroPro Wood Treatment Technology has recently been awarded a GoldHEALTH rating with its recently published Global GreenTag Level A Product Health Declaration™ (PhD™).

The GreenTag PhD is the first health transparency tool in the world to assess human health concerns directly, rating the health impacts of a final product – and not just the hazards of a product’s ingredients.

For more information call us now on 1800 088 809.



MicroPro® is a registered trademark of Koppers Inc. or its subsidiaries. MicroPro® timber products are produced by independently owned and operated wood preserving facilities. © 2019 Koppers Performance Chemicals Australia Pty Ltd. Global GreenRate, GoldHEALTH, Global GreenTag and GreenTag PhD are registered trademarks operated under licence by Global GreenTag Pty Ltd.

# Small holdings tree farm advice released

THE final report of the Trials Review, Information and Genetics (TRIG) project, has been released along with advisory information and updated data.

According to TRIG Steering Committee Chair, Dr Kevin Harding, the project sought to leverage the past work of Victoria's farm forestry sector by accessing legacy information and datasets to ultimately deliver new, updated tools and information for the next generation of farm forestry plantings.

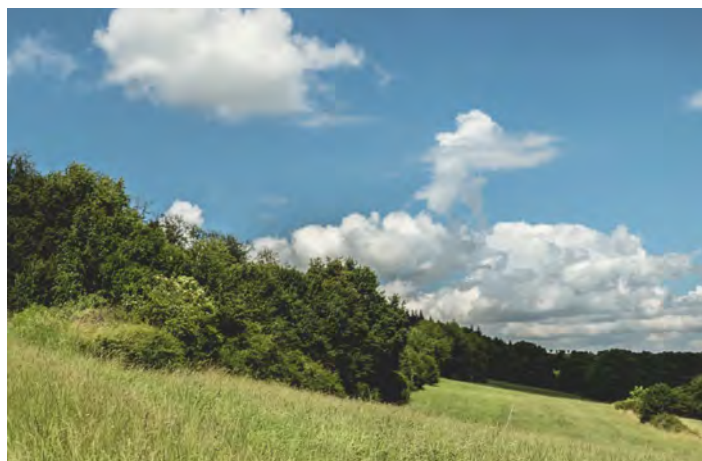
"Victoria has a proud legacy of extensive farm forestry trials and research established during the 1980s through to the early 2000s," Dr Harding said.

Dr Harding said farmers and small private forest growers need to maximise the quality of trees that they integrate into their farm plantings or investment plantations if they are to grow commercially competitive trees.

"To grow the best quality trees farmers and foresters need to be informed on the genetic quality of the stock they source and use, as well as its likely performance in their planting region.

"Performance tends to be dictated by species, provenance (where it comes from) and inherent genetics like frost resistance and drought tolerance and stem straightness, desirable branching habit, and tree vigour.

"To assist farmers and tree growers the TRIG project has captured the learnings from past programs and repackaged the information so it's current and accessible and also able to be interrogated using interactive web tools.



**The report reveals new and updated tools and information for the next generation of farm forestry plantings.**

"The program also identified sources of seed with the highest genetic quality for key species that have grown well in this State to ensure future plantings can be established with high-quality tree stock.

PF Olsen was appointed as project manager and on behalf of the TRIG Steering Committee engaged with farm forestry groups, indigenous groups, forestry consultants, CSIRO, and the Victorian Government to learn more about these historical trials and what information from these trials can support the expansion of trees on farms in Victoria.

Australia's Research and Consulting Manager with PF Olsen, Dr Phil Lacy, said the project delivered a broad range of outcomes that required extensive consultation, site visits and some operational activities.

"Through the life of the project, we had the pleasure to engage with some very passionate tree plantation owners who have successfully integrated trees into their farming enterprise for multiple benefits," Dr Lacy said.

Further outcomes from the project included:

- The development of

- productivity maps of two key species (Eucalyptus cladocalyx and Corymbia maculata) which will be made available via an interactive web portal on the Forestry Australia webpage.

- Analysis into the potential for forest forestry plantings

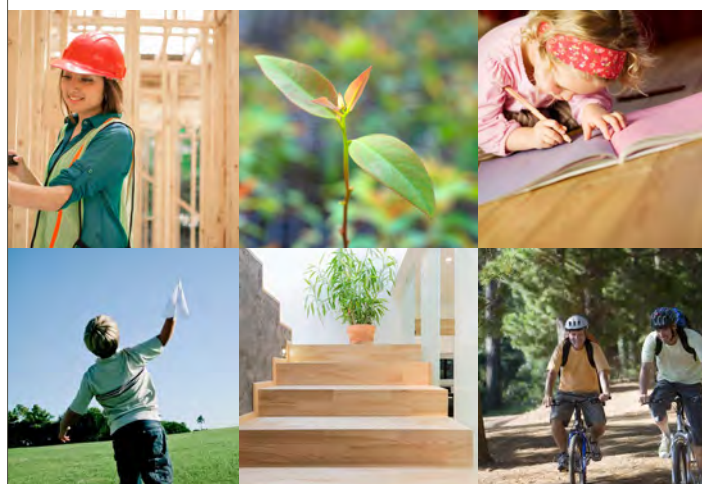
to access carbon markets in Australia.

- The identification of a series of model plantings to be highlighted as demonstration sites, with some case studies published in the report.

An overview of the opportunities and barriers to access existing and new sources of improved seed for a key suite of farm forestry species

The TRIG project was designed in consultation with Farm Forest Growers Victoria, with funding provided by the Australian Government, and delivered via the Victorian Government's Department of Energy, Environment and Climate Action (DEECA). Forestry Australia, in its project oversight role, engaged PF Olsen to project manage and deliver the TRIG Project.

## The united voice for Australia's forest industries



0408 404 764  
enquiries@ausfpa.com.au  
www.ausfpa.com.au



# Wood expo showcasing Malaysian timber industry

Bringing together global industry players to offer new solutions and business opportunities.

Along with a cavalcade of sponsors and supporters the Malaysian Timber Council recently held an expanded wood expo in Kuala Lumpur. The expo was a demonstration and celebration of Malaysia's economically important forest sector.

The Malaysian Wood Expo was officially opened

“THE INDUSTRY WILL BENEFIT FROM COLLABORATION

by the Deputy Minister of Plantations and Commodities, YB Datuk Hajjah Siti Aminah who said she was delighted that just a year after Malaysia had reopened its borders following the Covid pandemic the expanded expo was being held.

“Such an expo will play a critical role in bringing together global industry players to offer new solutions and business opportunities for the advancement of the Malaysian timber industry,” she said.

The Deputy Minister said



Expo gathering ... YB Datuk Hajjah Siti Aminah, Deputy Minister of Plantations and Commodities; John Halkett, General Manager, Australian Timber Importers Federation; Ybrs Tuan Haji Zainal Abidin Haji Abdullah, Chairman of the Malaysian Timber Council, and Noraihan Abdul Rahman CEO, Malaysian Timber Council.

**NTHA CAN**

**TRAIN AND UPSKILL YOUR EXISTING TEAM MEMBERS**

- ✓ Nationally recognised qualifications and training
- ✓ Specialist industry trainers

**STRENGTHEN YOUR TEAM**

RETAIL, SALES, BUSINESS, SUPPLY CHAIN OPERATION AND LEADERSHIP QUALIFICATIONS

(RTO 5343)  
**1800 822 621**  
[ntha.com.au](http://ntha.com.au)

that the Malaysian timber industry was a remarkable success story of growth, strength, and sustainability and had progressed a long way from its humble beginnings as a college industry.

“Over the course of several decades, the industry has gained a reputation for its quality and strength making Malaysia a prominent global supplier of timber products to more than 170 countries.”

She advised that despite the challenges posed by the Covid pandemic the performance of the industry had been impressive. In 2021 exports of Malaysian timber products increased by 3% to AUD 7.3 billion, and in 2022

grew by a further 10.6% to AUD 8.1 billion, the highest earnings recorded by the timber industry in recent years. However, she noted that the current year has seen an appreciable decline compared with the same period last year primarily due to a slowdown in global business and economic activity.

“Drawing on our years of experience in global markets and our perseverance and the face of the Covid pandemic and other challenges, I am confident that the Malaysian timber industry is well positioned to embrace new opportunities in the post-pandemic era. With the right

Cont P 5

From P 4

strategies and through market research, I am certain that we will continue to thrive," she said.

In his opening remarks the Chairman of the Malaysian Timber Council, Ybrs Tuan Haji Zainal Abidin Haji Abdullah commented that the expo was aimed at connecting overseas timber product buyers with Malaysian timber companies for their raw material needs. "We hope the industry will benefit greatly from this collaboration and the expo program."

"This year we have over 120 exhibitors from 11 countries exhibiting a wide range of wood products from all raw materials and finished products to woodworking machinery. There will also be presentations by a number of experts providing insights into the latest market trends

and developments," he said.

International observers attending the expo and related activities were able to learn about Malaysia's sustainable forest management policies and practices, together with its efforts to add value to harvested logs to generate regional economic and other benefits as well as

supporting international efforts to strengthen compliance, legality and sophisticated management of tropical forests.

Attending the expo and allied activities general manager of the Australian Timber Importers Federation, John Halkett commented that recent disruptions to established timber product

supply chains, coupled with an emerging global shortage of timber products presented real challenges for industry participants.

"Arguably Malaysia has a role, if not a responsibility, across the tropical world to demonstrate its leadership and credentials in relation to sustainable forest management practices, certification and value-added processing for domestic economic and employment benefits." John Halkett said.

**On the cover: Officiating at the Malaysian Wood Expo 2034 are YB Datuk Hajjah Siti Aminah, Deputy Minister of Plantations and Commodities; Ybrs Tuan Haji Zainal Abidin Haji Abdullah, Chairman of the Malaysian Timber Council, and Noraihan Abdul Rahman CEO, Malaysian Timber Council.**



- 1/ **Measuring a meranti... sustainable forest management practices on display.**
- 2/ **Add value to harvested logs to generate regional economic and other benefits.**
- 3/ **Malaysia's sustainable forest management policies and practices key to expo success on show.**

# Enabling sustainability..

## through world-class standards

[responsiblewood.org.au](http://responsiblewood.org.au)



# Four farms approved for conversion to forestry in NZ sale

FOUR farms covering more than 2,000 hectares in New Zealand have been sold to overseas investors for conversion to rotational forestry.

According to RNZ, sales were approved under the Overseas Investment Office Special Forestry Test.

A 632-hectare beef farm in Whangārei has been sold to Swiss company Kauri Forestry - it plans to convert 420 hectares of the farm into a commercial plantation forest.

The remaining land will be made up of approximately 152 hectares of native bush and scrub and 60 hectares of unplanted land, infrastructure and buffer land which will include riparian and boundary setbacks.



**The rules for overseas investments in forestry changed last year, making it harder for foreign investors to purchase New Zealand farmland for conversion.** Photo: via RNZ / Kate Newton

A Dutch company has bought a 186-hectare block of land in Clutha, Otago which is currently a mixture of farmland and forestry.

It intends to maintain the existing forestry activity and convert the remaining

land to trees.

A large sheep and beef farm in Waimate has been sold to US company Port Blakely Limited - 312 hectares farm will be planted into rotational forestry by the end of next winter.

The land adjoins 1785 hectares of the company's existing forest known as Waimate Forest.

And furniture company IKEAs parent company Ingka Investments has purchased another farm.

The majority of the 954-hectare sheep, beef and deer farm in Gisborne will be planted into trees in the next two years - with harvest taking place in about 30 years.

Last year the rules for

overseas investments in forestry changed, making it harder for foreign investors to purchase New Zealand farmland for conversion because they must now meet the stricter benefit to New Zealand test.

Last month, it was announced the Government was set to tighten up rules on farm-to-forestry conversions by giving communities greater control over the planting of forests.

Amendments to the National Environmental Standards for Plantation Forestry will require land owners to adhere to new standards such as ensuring firebreaks are in place, and new rules about planting next to rivers, lakes and wetlands will now be required for any new forestry conversions.

"These changes are about getting the right tree in the right place, by seeing fewer pine forests planted on farmland and more on less productive land," Henare MP said.

"We are empowering local councils to decide which land can be used for plantation and carbon forests through the resource consent process."

**Source: RNZ**



## Develop our future workforce

ForestWorks is an industry-owned not-for-profit organisation offering services to support the skills development of the forest, wood, paper, timber and furnishing industries.

ForestWorks works with industry, government and the education and training sectors to improve skills standards and qualifications and support the development of forestry-related industries, their people, and enterprises.

To find out more:

Email: [forestworks@forestworks.com.au](mailto:forestworks@forestworks.com.au)  
Phone: 1800 177 001  
[www.forestworks.com.au](http://www.forestworks.com.au)

Premium quality structural framing timber

**VIGIDAS**  
P A C K

www.vigidas.com.au  
Phone +61290984323  
e-mail: [sales@vigidas.com.au](mailto:sales@vigidas.com.au)  
Origin Lithuania

**JULY**

**16-21: Understanding Forest Course, Gottstein Trust – Pacific Bay Resort, Coffs Harbour, NSW.** A week-long forest science course that provides an understanding of sustainable Australian forest management, the economics of growing trees for wood production and other forest services. The course covers both planted and natural forests and provides an appreciation of environmental issues and international strategic trends in the forestry industry. For further information see: <https://gottsteintrust.org/grants-courses/understanding-forest-science-course>

science-course

**AUGUST**

**29-30: Timber & Forestry enews Australian Timber Supply Summit – Melbourne.**

Early warning alert. For any queries relating to the conference, please contact CORP COMM. Email: [info@corp-comm.com.au](mailto:info@corp-comm.com.au) Phone: +61 3 5977 0244

**27-3 SEPT: Malaysian Timber Council Trade and Marketing Mission to Australia – Melbourne & Brisbane.**

Including visits to Melbourne and Brisbane. To participate and for further information contact John Halkett at [john.halkett@forestlands.com.au](mailto:john.halkett@forestlands.com.au) or 0417 421 187

**SEPTEMBER**

**9: Women in Forest & Timber Network Charity Cocktail Fundraiser – Rose Room, Brisbane.** 3:00 pm to 6:00 pm. Annual charity cocktail fundraiser in support of the Brisbane Domestic Violence Service (BDVS). This event will raise much-needed funds to help BDVS respond to women, children and families experiencing domestic and family violence and to continue achieving safer families, free from abuse. For further information and sponsorship opportunities contact Jacinta. [Colley@vidawood.com](mailto:Colley@vidawood.com)

**11-12: Timber Off-Site Construction Conference**

**– Crown Promenade Melbourne.** The theme for 2023 is “Timber & Technology – The Zero Carbon Future”. For more information visit [www.timberoffsitestructure.com](http://www.timberoffsitestructure.com)


**OCTOBER**

**15-19: ANZIF Conference: Embracing our natural capital: The science, technology, and art of managing forests for all values – Twin Towns Conference Centre, Coolangatta, Queensland.** Further details from Forestry Australia at: <https://www.forestry.org.au/>

Australian Timber Supply Summit

Discuss, network and understand the Australian Timber Supply Industry

- CROWN PROMENADE MELBOURNE
- 29 - 30 AUGUST, 2023
- CLICK OR SCAN CODE TO REGISTER



**Have you registered for the “Australian Timber Supply Summit?”**

THANK YOU to our sponsors and supporting partners of the Australian Timber Supply Summit to be held in Melbourne on 29-30 August 2023.

This event will be a fantastic opportunity to discuss, network and understand this essential component of the supply industry.

Contact [sponsorship@corp-comm.com.au](mailto:sponsorship@corp-comm.com.au) for information on sponsoring this event. Scan the QR code and register today!



**WOOD BASED PRODUCTS**



**Do** you crossect timber packs at ±1mm accuracy

**OR** cut structural timber, panel products (MDF & LVL), paper rolls

**OR** produce pallet dimensions or studs on fixed lengths

*HOLTEC has a solution for you*

For more information contact:

Ph: +64 9 416 8294  
 Fax: +64 9 416 8296  
 Email: [sales@holtec.org](mailto:sales@holtec.org)  
 Web: [www.holtec.org](http://www.holtec.org)



**HOLTEC**  
YOUR PARTNER FOR THE PERFECT CUT

**Our Scope of Supply:**

- Mobile and stationary chainsaws
- Mechanisation
- Timber crossect stations
- Sorting lines
- Log cutting stations
- Scanning and optimising systems
- Circular saws
- Special systems

# China and New Zealand strengthen forestry cooperation

A BILATERAL meeting between New Zealand and China will pave the way for further cooperation in forestry, climate change and trade, New Zealand's Forestry Minister Peeni Henare said.

Peeni Henare and Mr Guan Zhi'ou, Administrator of China's National Forestry and Grassland Administration, met in Beijing to discuss and commit to a range of forestry cooperation activities.

"Both China and New Zealand share a long-term commitment to further strengthening our forestry relationship to boost outcomes for our respective sectors," Peeni Henare said.

"During this meeting, we discussed a range of matters important to both sides. This

included further cooperation through technical exchanges, for example on the role of forests in achieving improved environmental outcomes and the transition to a low-carbon bioeconomy.

"We also discussed deepening our bilateral trade, including in value-added products.

"China's National Forestry and Grassland Administration is looking to host its regular dialogue with Ministry for Primary Industries officials in China in the coming



**New Zealand's Forestry Minister Peeni Henare met with Beijing counterparts to discuss and strengthen the trade relationship between the countries.**

year, which will provide an additional forum for further strengthening government-to-government collaboration."

An example of past collaboration was the 2nd China, New Zealand Forestry Dialogue held in November 2021, which included exchanges on sustainable forest management, international forestry trade, and efforts to combat illegal logging.

Peeni Henare said Aotearoa's forestry exports form a large part of our bilateral trade with China, with exports expected to top \$6.5 billion in the year to 30 June 2023.

"In Aotearoa, a successful forestry sector drives regional revitalisation, supports Māori to realise the potential of their land, and delivers benefits to our people, economy, and environment," Peeni Henare said.

**“IT PROVIDES A FRAMEWORK TO CONTINUE COLLABORATION**

"Responding to climate change is also a vital priority for both Aotearoa and China, and forestry plays an important role in response to shared climate challenges."

Peeni Henare and Mr Guan Zhi'ou also renewed a forestry cooperation arrangement as a commitment to further strengthening forestry relationships between New Zealand and China.

Peeni Henare said the renewed arrangement, first signed in Wellington in 2019, reinforces the strong ties and supports relationships between New Zealand's and China's forestry and wood processing sectors.

"The renewed forestry cooperation arrangement provides a framework to continue collaboration and dialogue between our countries on forests and the forestry sector," Peeni Henare said.

"It includes new provisions which recognise the important role that forests and wood products have in helping both countries in carbon storage, reducing emissions and adjusting to climate change, and opportunities for both government and industry cooperation.

"Further cooperation will strengthen China's and New Zealand's trade relationships and knowledge sharing and is a testament to our strong relationship and the depth of goodwill between our countries.

"Through the constructive and positive bilateral engagements today, we have together made significant progress in our trade relationship, which clearly shows our relationship is in good heart." Peeni Henare said.

## NO ONE KNOWS

# AIR FLOW

## LIKE SMITHCO

We've been a leading force in air flow design for almost 3 decades, with 4-, 6-, 8-, and 12-bladed propellers, designed and manufactured exclusively for the lumber industry. Now, they are even more capable with higher- temperature capacity for certain applications. We combine this technology with unsurpassed customer service, design consultation and technical expertise, so whatever your air flow need, **you can trust SmithCo to deliver.**

Phone 503-295-6590 • 800-764-8456 U.S.  
smithcomfg.com sales@smithcomfg.com





# NZ Timber Museum is expanding its visitor experience

BY DENNIS NEILSON

ESTABLISHED 40 years ago, the New Zealand Timber Museum is now renovating a number of its existing exhibits and is creating new ones to diversify its visitor experience.

Timber Museum NZ Trust Chair (and Enews Director) Dennis Neilson is overseeing several renovations, and new projects after the Museum largely stood still, or even went backwards over the last 15-20 years.

Some new industry funding, especially from the NZ Wood Industry Development and Education (WIDE) Trust is enabling the Trust to work on several fronts, including:

- Renovating an older neglected 'Acclimatisation Society' collection into 'The Wildlife of New Zealand Forests Exhibition'.
- Renovating a 40-year-old but neglected 'Native Forest Grove'
- Planting four new Native Canopy Species 'Circles'

“UPGRADES WILL SEE SIGNIFICANT INCREASE IN VISITORS



*Ancient tree in the grounds... Tane Mahuta >2000 year old Kauri.*

and one Exotic Species circle

Dennis says that this will provide a unique opportunity to educate visitors about four iconic NZ native species, which 'built New Zealand' during its 170-year history – Kauri, Totara, Rimu and Kahikatea.

"These will enable visitors to experience standing in the middle of a single species native forests, as they were for millions of years – with giant specimens being more than 1,000 years and even more than 2,000 years old," he said.

"Native forest harvesting in New Zealand was effectively banned 20 years ago (a process that native species wood processors in a number of Australian States

Cont P 10

HYNE.COM.AU

QUALITY  
SERVICE  
INNOVATION

HYNE TIMBER

From P 9

are painfully experiencing more recently and into 2023.)"

"In addition one 'exotic forest' Circle will feature four softwood species, including the dominant Radiata pine, Douglas fir, macrocarpa and redwood; and two commercial eucalyptus species introduced from Australia," Dennis said.

Additional upgrades of the museum include:

- Renovating an historic schoolroom, which opened 110 years ago in the district. It was transported to the Museum site some years ago, but could not be renovated until the Museum's founder recently donated funds to complete the work.
- Opening a café
- Finishing off a 140- seat Conference Centre
- Engaging Museum consultant StoryInc to design integrated



A new model railway is being added as part of the upgrade.

Museum-wide signage and interpretive panelling. These will much better inform and educate visitors about all the several exhibits both inside several buildings on site and scattered outside throughout the complex

Also in the works is a joint venture with model railway enthusiast Pierre Vuilleumier designing, building and opening a major model railway complex, made up of three different model railway systems - including

a customised one with trains running through New Zealand native and exotic forest landscapes. This will be one of the largest model railways in New Zealand (and possibly Australasia).

Dennis Neilson predicts that the opening later in 2023 will soon see a significant increase in visitors to the Museum.

Future projects in planning include:

- With support from Maori, an exhibit showing the

history of local tribes in the region, and also recognising the huge contribution that Maori workers have made in both the historic native logging and sawmilling era, and also the more recent and current exotic plantation forest planting, management and harvesting; and wood processing sectors.

- A new exhibit - 'The New Zealand Exotic Forest Industry: Past Present and Future', housed in a new speciality building. This will take the industry on a pathway – not just to identify its (very proud) history, but also its future contribution to several important aspects of New Zealand society; including to the timber framing and roof trusses found in 95% of New Zealand dwellings, export earnings, modern sustainable timber uses and mass-timber structures, biodiversity, water quality and carbon sequestration.



**Designed & Manufactured in the USA Since 1985**

- All Lasers have a 24 Month Warranty
- All Lasers are Fully Rebuildable.
- 24 Hour Service Turnaround.
- AC & DC Power Options Available.

**Lasers Built for Industry:**

- Primary & Secondary Wood Processing
- Portable Sawmills
- Bridge Saws
- Robotics



**Red Lasers Available in:**  
5, 10, 15 & 30mW

**Green Lasers Available in:**  
5, 10, 30 & 50mW



[sales@lumberlinelaser.com](mailto:sales@lumberlinelaser.com) | toll free 855-686-3077 | [www.lumberlinelaser.com](http://www.lumberlinelaser.com)

# Professional freight task management program launches

FOLLOWING the resounding success of the Australian Forest Contractors Association's (AFCA) Professional Ownership & Driver Wellbeing Program (PODW), they have now announced they are launching a new initiative, the Professional Freight Task Management Program.

AFCA has once again collaborated with industry experts Alan Pincott from ATSSS- Australian Trucking Safety Services & Solutions and Kirstin Pincott from KJ Training & Consulting to present this groundbreaking program.

'Professional Freight Task Management' goes beyond the scope of POWD

and now incorporates the renowned 'Rollover' Program. This comprehensive training package has been meticulously designed to promote 'best practice' not only within the transport industry but also across various non-transport sectors.

With an emphasis on safety, efficiency, and industry-wide excellence, this program is set to revolutionize the way freight tasks are managed. It equips professionals with the knowledge, skills, and tools necessary to navigate the complexities of the freight industry while prioritizing the well-being of drivers.

"By combining the expertise of Alan Pincott and Kirstin Pincott, this program offers a holistic approach



**The program will focus on safety and information for freight drivers.**

to freight management," a spokesperson for AFCA said.

"Their extensive experience and dedication to safety will ensure that participants gain invaluable insights and practical strategies to enhance their operations.

"We invite all industry professionals, both within and outside the transport sector, to join us in embracing

this cutting-edge training opportunity.

"Together, we can foster a culture of continuous improvement and set new standards for excellence in our respective industries," they said.

Topics covered in the program include sleep cycles, planning, understanding industry-related accidents, understanding your vehicle and much more.

The program will run from August to October and will be held in Tasmania, NSW, Victoria, South Australia, and Queensland.

**arxada**

**Always in demand**

**TRUST Ecowood®**

**TREATED TIMBER PRODUCTS**

Ecowood® is a registered trademark of Arxada or its subsidiaries. ©2022 Arxada

# Build with the trusted and popular choice for exterior timber



## WOODHOUSE WEATHERPROOF



LIMITED PRODUCTS WARRANTY



FUNGAL & TERMITE RESISTANT



FACTORY PRIMED FINISH



SUSTAINABLE PLANTATION RADIATA PINE



The mark of responsible forestry



For further information,  
please visit [www.woodhouse.com.au](http://www.woodhouse.com.au)  
or call **1800 966 346**

\*Ask for our FSC® certified product range

# NZIA regional awards: winners with wood

BY MICHAEL SMITH

OVER the past six weeks, seven constituent branches of the New Zealand Institute of Architects hosted their annual awards – promoting and celebrating some of the country's best new architecture. Timber & Forestry

enews took the opportunity to profile four of the winners that made extensive use of wood – decoratively and/or structurally.

Prominent amongst the winners in the Auckland region (Interior Architecture category) is Whangarei Maori Land Court, by GHDWoodhead creativespaces in association with Studio Pasifika.

This retrofit of a former business centre includes a courtroom, ancillary areas for the judiciary, interview and research spaces, and a library of ancestral records for tangata whenua (people of the land).

The judges noted the courtroom “is a space installed with whareniui imagery created by Carin Wilson [a leading furniture maker and sculptor] that reflects the history of local iwi and engages te ao Maori principles”.

Laminated rimu, matai and totara panels, and carved Southland beech battens and beams contribute to the rich narrative and welcoming nature of the space. It is now regarded “as a benchmark for similar courts and venues of



1/ **Motueka Public Library:** “Robust external detailing, cladding and roofing reflect the nature of the community’s agricultural roots.” Photo: Jason Mann

2/ **Whangarei Maori Land Court:** “This contemplative space is calm, inviting, conciliatory and peaceful.” Photo: Michelle Weir

public engagement”.

Emerging as a winner from the Nelson/Marlborough region (Public Architecture category) is Motueka Public Library, by Jerram Tocker Barron Architects.

Inspired by the functional, traditional and robust forms of rural farm buildings, the facility is a full timber structure, which was critical to achieving a low-carbon and energy-efficient design.

The building includes glulam posts, a central column line, and large-span timber trusses, which allow for an entirely open-plan 40 x 30 [timber] floor plate that can be reconfigured as required.

Other wood elements include heartwood Douglas fir cladding, radiata pine decking and eucalyptus slats.

Photovoltaic roof panels for on-site power generation and natural ventilation are used effectively to manage operational efficiencies, while soakage areas to deal with stormwater runoff complete the local council’s sustainability requirements.

Further south, from the Canterbury region, is Totara Pavilion by MC Architecture Studio – a winner in the Small Project Architecture category. The pavilion is situated adjacent to the site’s main dwelling and includes a gym, rumpus room, bike storage area and sauna room.

According to the architects, the design intent was to soften the edge of the garden with transparency and the extensive use of timber.

The judges called it “a subtle and inspiring example of a design philosophy that celebrates health and wellbeing – showcasing the interplay between architecture and landscape. Drawing inspiration from Japanese landscapes, the pavilion features a timber-framed courtyard/walkway, replete with small steps and decking, enveloping a majestic totara tree.”

The interior utilises soft timber elements such as oak

Cont P 14



1/ **Remarkable Crib:** “The restrained external palette is juxtaposed by the confident use of interior colour.” Photo: Simon Devitt

2/ **Totara Pavilion:** “Floor-to-ceiling glazing invites the outdoors in.” Photo: Clynton Lloyd



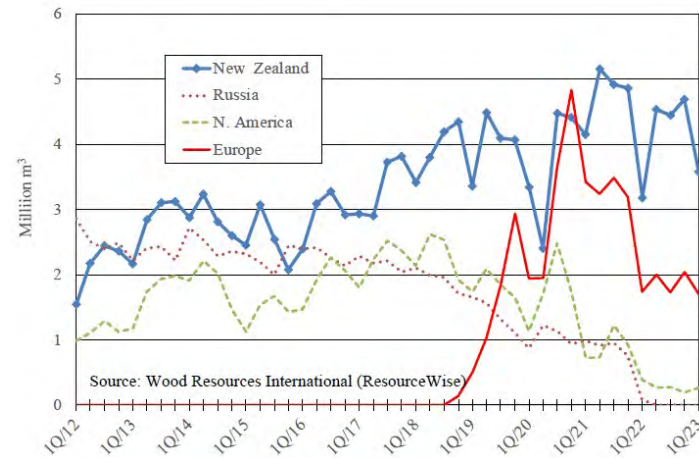
# China to expand lumber imports due to dwindling softwood log supply options

AS late as 2019, China imported almost 100 million m<sup>3</sup> rwe (roundwood equivalents) of softwood logs and lumber to meet the growing demand for forest products in the domestic market. Since then, wood consumption has declined, and the importation of forest products has decreased to levels not seen in over a decade.

Wood Resources International reports that China imported about 12 million m<sup>3</sup> of logs and lumber (rwe) in the 1Q 2023, nearly half its peak in the 3Q 2020 and the second lowest quarterly imports in ten years.

According to the World Bank, China's economy took a big hit during the Covid epidemic, with the GDP growth falling to an estimated three percent in 2022, compared to a 9% average annual increase from 1978-2021. It is estimated that the economy will see a rebound to just over 5% growth in 2023.

## SOFTWOOD LOG IMPORTS TO CHINA



Graph: Wood Resources International.



China will explore opportunities to increase lumber imports

China's dramatic reduction in log imports has predominantly been

driven by the lack of supply from Russia following the country's implementation of

a log export ban in January 2022. Russia was the largest log supplier to China until 2012 when New Zealand surpassed it. Since then, Russia's shipments have fallen consistently and were down to zero in 2022. With log supply from Russia, Australia, Canada, and the US plunging over the past five years, New Zealand and Europe have become the two major regions supplying China.

During the first four months of 2023, New Zealand's market share of China's total log imports was 58%, followed by Germany (14%), Poland (5%), the US (5%), Canada (4%), and Japan (4%). The outlook is for declining shipments from North America and Europe, eventually leaving New Zealand as the only remaining major log supplier. Consequently, China will need to explore opportunities to increase lumber imports rather than logs to meet future wood demand.

**Source: Wood Resources International**

From P 13

floors, birch plywood ceilings, and timber joinery ... while the timber shelving adds complexity to the simple design.

Meantime, a winner in the Housing category of

the Southern region (and a recipient of a Resene Colour Award) is Remarkable Crib, by Assembly Architects.

Situated at the base of the Remarkables mountain range, the architects described the crib (or holiday cabin) as simple monopitched building

forms that contrast with rich interior materiality.

The judges added that the restrained external palette (consisting of vertical shiplap boards that will blacken with age) "is juxtaposed by the confident use of interior colour. Earthy reds, sage

and pounamu greens are offset with stained plywood linings and tactile brass door handles that lend a homely, yet crafted feel."

**Note: Winners of the regional awards may progress to the NZIA's national awards, which are held later in the year.**



## DO YOU HAVE NEWS TO SHARE?

Share media releases, news stories, events, and any timber and forestry news related information with us anytime -

**news@timberandforestrynews.com**  
**edit@timberandforestrynews.com**

**timber**  
& FORESTRY *e*NEWS

Contact Nicky or Donyale today...  
**news@timberandforestrynews.com**  
**edit@timberandforestrynews.com**

# WFTN Qld to host annual 'Cocktails for Charity'

WOMEN in Forests & Timber Network (WFTN) Queensland has announced their 2023 Charity Cocktail Fundraiser in support of Brisbane Domestic Violence Service (BDVS).

This year's event marks 10 years since the first WFTN fundraiser.

"WFTN has been running our charity cocktail event for the past 10 years, raising a lot of money for very worthy causes while catching up and networking with friends along the way," Alicia Langfield, WFTN Chair said.

"This year, celebrating our 10th year, we are already overwhelmed with the industry support in sponsorship dollars which goes straight to our charity of choice, BDV.

"We can't wait for the event and look forward to seeing many of you there," Alicia said.

BDVS is an initiative of Micah Projects, a not-for-profit organisation committed to providing services and opportunities in the community to respond to injustice.

BDVS specifically offers free and confidential financial and emotional support, crisis response, advocacy, safety planning, education,



1/ Back to 2013 when it all began... from L to R: Jenni Day (Versace Timbers), Clarissa Brandt (Timber Qld), Alicia Langfield (TABMA), Sue Wood (ex CSR), Jacinta Colley (Vida Wood), and Destiny Rescue Representative.



2/ A mission to create safer families... from L to R: Belinda Cox (BDVS), Jacinta Colley (Vida Wood), Jo Mason (BDVS), Kim Richardson (NTHA), Alicia Langfield (NTHA), and Tahlia Pauchet (Timber Queensland).

outreach and variety of services that are fundamental to creating a "safe place" for those experiencing domestic and family violence (DFV).

Women, men, friends

and family are invited to join WFTN on Saturday 9th September for an afternoon of drinks and canapes for charity in support of BDVS to raise much needed funds for resources.

Raffles and auctions will also take place during the function to raise additional funds.

"WFTN would like to thank our annual partner

ITI Australia and Platinum Sponsor Tilling Timber who have confirmed their support so far," they shared in a statement.

Gold, Silver & Bronze Sponsorships are filling fast however there are still opportunities available to support this event.

The event will take place from 3pm to 6pm on September the 9th at the Rose Room, Fortitude Valley, Brisbane.

Tickets are \$65 and can be purchased through trybooking.com. RSVP is by August 28th.



INVITES YOU TO  
**COCKTAILS FOR CHARITY**



SATURDAY, 9TH SEPTEMBER 2023  
AT 3 PM IN THE AFTERNOON

THE ROSE ROOM, 14/20 CONSTANCE ST  
FORTITUDE VALLEY, QLD 4006

TICKETS \$65



RSVP BY 28TH AUGUST 2023

SUPPORTED BY OUR ANNUAL PARTNER



PLATINUM SPONSOR



# ForestLearning attends Sustainable Forestry Initiative conference in Vancouver, Canada

FOREST-LEARNING Program Manager Beth Welden attended the Sustainable Forestry Initiative (SFI) Conference 2023 in Vancouver, Canada, held in mid-May.

The conference brought together industry leaders, educators and environmentalists to discuss sustainable forestry practices, education, and the intersection of conservation and forestry. The conference provided a platform for sharing experiences, knowledge, and fostering collaborations for the betterment of the forestry and wood products industries.

Welden's attendance allowed her to connect with other international forest education programs, such as Project Learning Tree (PLT) in the USA and Canada, as well as local, national, binational, and global community members. These included representatives from the SFI, and Programme for the Endorsement of Forest Certification (PEFC) networks, indigenous representatives, government officials, students, faculty, researchers and conservation groups.

"ForestLearning's presence at this important international event resulted in valuable insights and outcomes. We aimed to cultivate the sharing and licensing of high-quality international forest education resources so they can be adapted for the Australian curriculum and contexts for



## SUSTAINABLE FORESTRY INITIATIVE

SFI-00001

*The conference provided a platform for sharing experiences, knowledge, and fostering collaborations for the betterment of the forestry and wood products industries.*

our teachers to use in their classrooms," Welden said.

PLT expressed interest in further exploring the licensing of subset of resources by way of a pilot program for adaptation to the Australian context. PLT is committed to advancing forest literacy, stewardship, and green career pathways, using trees and forests as windows on the world.

"I gained valuable insights and firsthand experiences into the PLT program structure and teaching resource toolkits. Their program is grass roots, locally focussed and includes a network of on-the-ground regional coordinators. These coordinators work to develop partnerships between schools and industry, indigenous cultural advisers and steering committees, and green jobs coordinators in regions," Welden said.

"Together they work to build 'forest literacy' throughout primary and secondary education and help address workforce issues through the attraction and retention of new forester interns from environmental science fields.

Off the back of this, FWPA and ForestLearning were invited to attend the Youth



**ForestLearning Program Manager Beth Welden attended the event in Canada.**

Delegation PLT training workshop immediately following the conference.

"This training workshop provided exposure to hands-on PLT forest education activities and the upskilling of 'youth industry champions' for the delivery of programs and activities in schools across the USA and Canada," Welden said.

"Pleasingly, the workshop highlighted the similarities in resource content seen between PLT and ForestLearning, the importance both programs place on hands-on activities to engage young learners, and therefore the efficiencies to be gained in adapting PLT teaching resources for Australian classrooms through licensing agreements."

Moving forward, ongoing

**“ VALUABLE INSIGHTS AND OUTCOMES WERE GAINED AT THE CONFERENCE ”**

conversations between PLT and ForestLearning will also contribute to the development of Indigenous-related content and themes for teaching resources within ForestLearning. Both organisations are committed to incorporating respectful and authentic Indigenous voices as they relate to forests and wood

products.

Welden also met with several other Canadian, American and international organisations working with schools in forestry education, including the Lesser Slave Forest Education Society and Forestry Future Alliance in Alberta.

"We also initiated discussions to establish an informal international forestry education consortium, aiming to enhance collaboration and sharing among international organisations such as ForestLearning, PLT, and the International Forestry Students Association," Welden said.

The SFI Conference 2023 provided an invaluable opportunity for FWPA and ForestLearning to engage with international partners involved in forestry and wood product education in schools and explore collaborations in forestry education. The ideas and inspirations gathered will be further explored with PLT and others in a meeting set for July.



# How trees keep 'friends' close and 'enemies' guessing

AROUND the globe, forests are facing unprecedented challenges. They're grappling with wildfires, diseases, droughts and deforestation. The survival of these great forests hinges on their ability to regrow, and for many trees, a process called "masting" is key to this regeneration.

A new study by an international team of scientists that included millions of tree-year observations worldwide, published in *Nature Plants*, for the first time documents and analyses the intricate balance between seed defence and dispersal by forest trees at a global scale. Researchers from 70 institutions contributed to the paper.

Seeds, fruits and nuts—high in carbohydrate, fat and protein content—are among the highest quality plant foods in nature, noted the study's lead author Tong Qiu, assistant professor in Penn State's College of Agricultural Sciences.

When there are a lot of seeds, seed consumers such as birds, squirrels and insects have a feast. Their populations grow because there is plenty of food for them to eat and feed their offspring. But in the years following a mast, when seed production is low, these animals might struggle to find

enough food, and this could lead to a drop in their populations.

"At the same time, some seeds that aren't eaten during the mast year might germinate and grow into new trees, and this can lead to an increase in tree numbers, affecting the forest's overall growth and the habitat for other creatures," Qiu said.

"Understanding masting patterns can guide forest managers in their conservation efforts."

Erratic seed crops may help trees confound their seed predators, but Qiu and colleagues wondered what they do to the seed dispersers the trees may need to ensure successful germination. If unreliable seed production that thwarts a tree's "enemies" has the same negative impacts on their disperser friends, they hypothesized, then perhaps the tree species that rely most heavily on animal disperser species must forego this defensive option.

In the paper, the researchers introduce three elements of masting based on 12



**A recent study looks at masting in trees and the roll it plays in regeneration.**

million tree-year observations worldwide. The first is volatility, which reflects the amount seeds fluctuating year to year. The second is periodicity, which refers to the time interval between the years of high seed production. Third is synchronicity, representing a common trend where many trees bear large seed crops in the same years.

But there is a problem with this explanation for masting, pointed out the study's senior author James Clark, Nicholas Distinguished Professor of Environmental Science at Duke University, who has built the Mast Inference and Forecasting network, better known as MASTIF.

The same tree species that attract seed predators may also depend on mammals and birds to disperse their seeds, he suggested. These friends

are so valuable that many tree species pack their fruits and nuts with extra resources and advertise them with colorful displays, all to attract their important mutualist dispersers.

In the paper, the researchers evaluated whether the unreliable seed production that

thwarts a tree's enemies had the same negative impacts on their disperser friends. If masting effectively guards against enemies—and it does, they confirmed—then perhaps the tree species that rely most heavily on animal disperser species must forego this defensive option.

Nutrient and climate gradient also play a role in masting, the researchers reported. Meanwhile, masting is more common in cold and dry places.

"Interestingly, this happens in areas where weather conditions mean there is less need for animals to spread seeds, unlike in the wet and warm tropics where such help from animals is more common," Qiu said.

**Source: Pennsylvania State University**

Timber & Forestry enews is the most authoritative and quickest deliverer of news and special features to the forest and forest products industries in Australia, New Zealand and internationally. Enews is delivered weekly, every Thursday, 48 weeks of the year. Advertising rates are competitive with any industry magazine. Timber&Forestry enews hits your target market – every week, every Thursday!

## HEAD OFFICE

Timber & Forestry eNews  
PO Box 69, Potts Point, NSW 1335,  
Australia  
Phone // +61 (0) 417 421 187

## PUBLISHERS

John Halkett // +61 (0) 417 421 187  
johnh@timberandforestryenews.com  
Dennis Neilson // +64 (0)7 349 2764  
dana@dana.co.nz

## EDITORS

Nicky Ainley // +61 (0) 410 538 034  
news@timberandforestryenews.com  
Donyale Harrison // +61 (0) 417 487 497  
edit@timberandforestryenews.com

## ADVERTISING

Campbell McInnes // +61 (0) 406 223 007  
campbellm@timberandforestryenews.com  
advertising@timberandforestryenews.com

*The information contained in this publication has been obtained from sources assumed to be reliable. However, the publishers disclaim all warranties as to the accuracy, completeness, reliability or adequacy of the information displayed. Opinions expressed in Timber & Forestry e news are not necessarily the opinions of the publisher or staff. We do not accept responsibility for any damage resulting from inaccuracies in editorial or advertising. The publishers are therefore indemnified against all actions, suits, claims or damages resulting from content in this enews.*

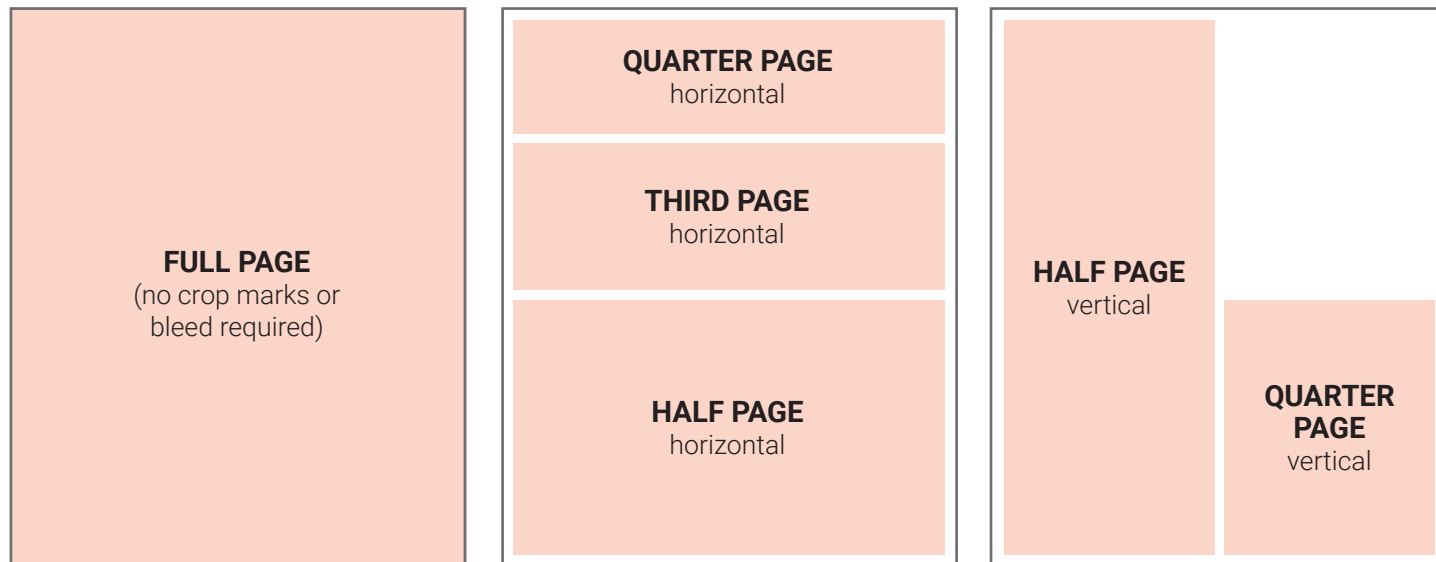
DELIVERED  
WEEKLY TO  
**15,200**  
GLOBAL  
READERS\*

## ADVERTISING RATES

**timber**  
& FORESTRY *e*NEWS

Now in its 15th year, Timber & Forestry eNews has grown to be the Number ONE online weekly news journal for the forest and forest products industries – across Australia, New Zealand and internationally.

## ADVERTISING SPECIFICATIONS



## DISPLAY AD RATES

All pricing below is excluding GST and are based on a weekly booking. Overseas bookings are exempt from GST.

### FULL PAGE: \$510

297mmH x 210 mmW

### HALF PAGE: \$305

Vertical • 256mmH x 93mmW

Horizontal • 125mmH x 190mmW

### QUARTER PAGE: \$195

Vertical • 125mmH x 93mmW

Horizontal • 63mmH x 190mmW

### THIRD PAGE: \$225

Horizontal • 73mmH x 190mmW

**PAGE 1 Front cover strip:** Contract booking  
Horizontal • 32mmH x 200mmW

**PAGE 1 Front cover module:** Contract booking  
Horizontal • 45mmH x 50mmW

**PAGE 2 below story:** Contract booking  
Horizontal • 73mmH x 190mmW

## CLASSIFIED ADVERTISING JOB ADS: ONLINE BOOKINGS ONLY

**BUY & SELL ADS: ONLINE BOOKINGS ONLY**  
744pxH x 720pxW

## TERM DISCOUNTS

12 WEEKS: 7.5% 24 WEEKS: 10% 48 WEEKS: 15%

Timber & Forestry eNews is published by Timber Media Australasia  
PO Box 69, Potts Point, NSW 1335, Australia. Phone: 0417 421 187.

Delivered every Thursday, 48 weeks of the year to industry decision  
makers in Australia, New Zealand, the Asia-Pacific, North America, UK  
and Europe.

### DEADLINES

**Display ads:** Book by 9am Tuesday prior to publication

**Supplied artwork:** Wednesday 12 noon prior to publication. Supply hi-  
res jpg or pdf to our specifications. **NO crop marks or bleed required.**

### Classified advertising: JOB ADS ARE COMPLETELY ONLINE.

Go to [www.timberandforestrynews.com/post-a-job/](http://www.timberandforestrynews.com/post-a-job/) to place a job  
vacancy. **Book by 12noon Wednesday prior to publication.** Job ads are  
for individual positions. If more than one position is to be advertised,  
separate ads will need to be created and advertised accordingly.

**BUY & SELL ADS ARE ONLINE AND IN THE PUBLICATION.** Go to  
[www.timberandforestrynews.com/product/buy-sell-advertisement/](http://www.timberandforestrynews.com/product/buy-sell-advertisement/)  
to place an ad. **Book by 5.00pm Tuesday prior to publication.**

### TERMS

New clients invoiced on booking. Existing clients 14 days.

## WHO TO CONTACT

**Media releases and editorial:** Nicky Ainley e: [news@timberandforestrynews.com](mailto:news@timberandforestrynews.com) and Donyale Harrison e: [edit@timberandforestrynews.com](mailto:edit@timberandforestrynews.com)

**Display ad bookings:** Campbell McInnes e: [campbellm@timberandforestrynews.com](mailto:campbellm@timberandforestrynews.com) // **Accounts:** Chris Parker e: [cparker@ttnews.com.au](mailto:cparker@ttnews.com.au)