

DELIVERED  
WEEKLY TO  
**14,500**  
GLOBAL  
READERS\*

# timber & FORESTRY *e*news

timberandforestryenews.com

ISSUE 523 | August 9, 2018



**Responsible  
Wood**

[responsiblewood.org.au](http://responsiblewood.org.au)



**MARGULES  
GROOME**

FIRST FOR FORESTRY CONSULTING

[www.margulesgroome.com](http://www.margulesgroome.com)



**TimTechChem  
Australia**

**For all your  
Timber  
Preservation  
needs...**

PH: 07 3293 2651  
24hrs: 0417 749 481  
[www.timtechchem.com](http://www.timtechchem.com)



The mark of safety,  
reliability and trust.



[www.ewp.asn.au](http://www.ewp.asn.au)

+61 7 3250 3700

## Chopper extraction an ecological gain in NZ

COVER STORY P9



**The NATIONAL voice for**  
Timber Merchants • Suppliers • Manufacturers  
**Contact us on 1800 TABMA1**



# Markets and innovation hold key for Tassie's private forest owners

## Major renaissance for wood products: Evan Rolley

MEETING the demands of emerging wood markets, innovation and research to lift productivity are the keys to the future growth of Tasmania's private forest growers, says the newly appointed chair of Private Forests Tasmania Evan Rolley.

The appointment was announced this week by the Minister for Resources and Energy Guy Barnett.

Mr Rolley said that as a small plantation tree grower and private native forest owner, he had first-hand experience of the challenges facing the private sector in managing commercial returns and meeting the increasing environmental requirements.

"The recent major transformation of Tasmanian annual wood production from predominantly state-owned to now three-quarters by volume privately-owned has created new opportunities for private sector growth," Mr Rolley said.

"There is a major renaissance for wood



*Evan Rolley... environmental benefits from well-managed forests should be properly valued.*

products which are seen worldwide as the key to sustainable building and construction materials in this century.

"The challenge is in using the knowledge of the history of the forestry sector to achieve growth and value-adding in ways that can bring together the needs and aspirations of urban communities and the practices of those who grow the trees in regional areas.

"New markets, innovation and the application of practical productivity research are the vital ingredients to

sustain the growth story," he said.

Mr Rolley said that providing efficient infrastructure that worked for all rural industries was vital.

He said it was also important that environmental benefits from well-managed forests be properly valued

to encourage more private sector investment.

Mr Rolley says he is looking forward to being the new chair of Private Forests Tasmania as the organisation can play a pivotal role in facilitating growth of the private forest resource in the state.

Evan Rolley has called Tasmania home for more than 42 years, running successful farming and forestry businesses. He has also held a range of CEO, executive and director positions in the public and private sector in Australia and overseas.

“USING THE KNOWLEDGE OF THE HISTORY OF THE FOREST SECTOR



**Customers SEE a difference in MicroPro Sienna.**

**Long Lasting Colour and Latest Generation MicroPro Preservative.**



**Find us at [kopperspc.com.au](http://kopperspc.com.au) or call 1800 088 809**

MicroPro® and MicroPro Sienna® are registered trademarks of Koppers Inc. or its subsidiaries. MicroPro, and MicroPro Sienna timber products are produced by independently owned and operated wood preserving facilities. © 2017 Koppers Performance Chemicals Australia Pty Ltd.

# WoodChat: podcast arrives on a 'sound cloud' near you

RESEARCH and development provider Forest and Wood Products Australia has launched its inaugural industry news podcast series WoodChat.

Each episode in the six-part pilot series will include an in-depth conversation with experts on a different industry-related news story, discovery or innovation.

Podcast topics include biophilia, climate impact, genomics, drones and much more.

During the first episode of the series, the hosts spoke to Associate Professor Jacki Schirmer of the University of Canberra about biophilia – the principle that exposure to nature increases human wellbeing and the positive effects of wood indoors.

This comes off the back of world-first research (the report can be downloaded from the WoodSolutions website) that demonstrates a strong association between wood in the workplace and increased worker satisfaction and wellbeing.

FWPA national marketing and communications manager Eileen Newbury said the organisation was always looking to explore new ways of communicating industry news and information.



1/ On WoodChat... Associate Professor Jacki Schirmer.  
2/ Dr Patrick Mitchell... predicting forestry climate impacts.

been keen to embrace," she said. "There are some fascinating topics, which we're looking forward to presenting to our audience in an exciting and engaging new way."

Stay tuned... the second episode will feature CSIRO research scientist Dr Patrick Mitchell discussing a new tool which aims to predict forestry climate impacts with the click of a mouse.

The tool is designed to increase the industry's awareness of climate and, ultimately, to manage risk and improve productivity.

Listen to WoodChat on SoundCloud at [www.soundcloud.com/woodchat](http://www.soundcloud.com/woodchat)

**“EXPLORING NEW WAY OF COMMUNICATING TO INDUSTRY”**

## China's high tariffs on US hardwoods a 'painful blow'

CHINA'S plan to slap tariffs as much as 25% on US shipments of hardwood means a "very, very painful" blow from the top customer, the American Hardwood Export Council says.

Everything from oak

wood to veneered panels of laminated wood has been ensnared in China's \$60 billion escalation of the trade battle with the US.

"Half of America's hardwood production is exported, and the bulk goes

to China," the council's executive director Michael Snow said.

"This could be, I don't want to say 'catastrophic,' but very, very painful for the industry," he said.



**FOLS**  
Skills Verification Program



**20% Off**

**Discount available\* for AFCA Members!**

- ✓ Evidence of employees' current skills and training
- ✓ Supports WHS risk management
- ✓ Supports professionalism and safety of industry

[www.fols.forestworks.com.au](http://www.fols.forestworks.com.au)  
**1800 177 001**

\*Australian Forest Contractors Association (AFCA)

**ForestWorks**

An industry-led program managed by ForestWorks



# Foresters monitor tree health as drought worsens across two states

## Firefighters at the ready, too, ahead of hot, dry months

JIM BOWDEN

WIDE areas of forest plantations in two states have become 'aged care facilities' as foresters monitor the worsening health of drought-stressed mature trees.

About 99% of NSW and more than 58% per cent of Queensland are officially drought-stricken.

"Radiata pine plantations are looking pretty good at this stage and have escaped any serious setback, but it's wait and see as memories of the 'millennium drought' of 2001-2008 return," said Dr Angus Carnegie, a senior scientist in the DPI science and research



*On the alert...  
DPI scientist Dr Angus Carnegie releases the biological control for pine aphid at Lidsdale state forest near Lithgow, NSW.*

division based in Sydney.  
The millennium drought

through 2003-2008 was considered the worst recorded since European settlement. Parts of the country remained hot and dry through to early 2010 before the emergence of La Nina weather conditions in 2010 rapidly ended the drought and led to floods in some locations.

the houses built in Australia each year, and 35,000 ha of eucalypt plantations.

"Unless we get some real hefty buckets of rain very soon we might see big areas of tree mortality as we head into the summer months," he said.

"We have already spotted some tree mortality around Bathurst and Dubbo with some serious tree stress at Tumut."

Drought impacts on trees in many ways – from photosynthesis to root growth and nutrient uptake, water is a part of it all.

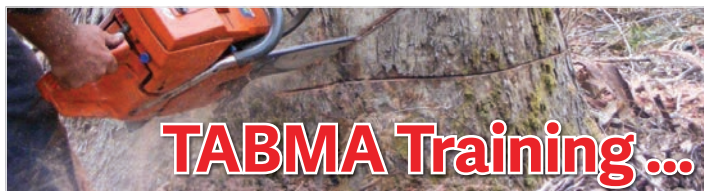
"The older trees cop the brunt of it," Dr Carnegie said. "They need and suck up a lot of water."

As trees grow, they expend energy in creating a root system that will support them in times when water is scarce. But although they can survive initial drought conditions, prolonged drought stress

### “DROUGHT IMPACTS ON TREES IN MANY WAYS

Dr Carnegie leads the forest health survey unit which conducts annual surveys of pine and eucalypt plantations managed by NSW Forestry Corporation.

The Forestry Corporation, which manages around 2 million ha of native forests for sustainable timber production, also manages 200,000 ha of softwood plantations, producing enough timber to construct a quarter of all



**TABMA Training...**  
**providing innovative training solutions**

TABMA Training (previously FITEC - RTO 5343) offers a full range of nationally recognised forest and timber industry qualifications ranging from forest operations, sawmilling, frame and truss design and manufacture, to timber merchandising, and business sales.

**PLUS our dynamic short courses are designed to achieve bottom line results for your business!**

Short courses include forklift training, chainsaw training, how to deal with customers in person and on the telephone, performance management, timber knowledge, timber take offs, and visual stress grading.

These short courses can be conducted at your premises (5+) or in a group at our facilities.



**Contact us now for further information.**  
**1300 693 483**

[www.tabmatraining.edu.au](http://www.tabmatraining.edu.au)



From P 9

makes them susceptible to insects and diseases.

Dr Carnegie said thinning improved drought resistance, but tree size, competition and species influenced this response.

On-going thinning treatments focused on fuels and fire hazard reduction are likely to be effective at promoting growth.

"But it all gets down to water – rain and lots of it," Dr Carnegie said.

The NSW government has announced a further \$500 million emergency drought relief package, taking the total drought support to more than \$1 billion.

The government already has committed \$584 million in drought support, most of which is focused on preparation for drought conditions.

Prime Minister Malcolm Turnbull this week announced a \$190 million drought relief package, which includes a boost for mental health services.

He said farmers would get up to \$12,000 in cash payments to help them and their communities fight "one of the worst droughts of the past century".



**Training and testing... Forestry Corporation's firefighters are preparing for the summer fire season.**

Mr Turnbull described the situation in some rural areas as diabolical.

The government is also changing the assets test to allow an estimated 8000 more farmers to access support to recognise the severity of the drought. But how much difference the package will make is unclear.

One farmer said \$12,000 might put food on the table for his children, but would go nowhere on the farm because it was less than the cost of a load of grain or hay.

Mr Turnbull defended the figure, promising to monitor the situation given grave forecasts of drought continuing through spring and summer.

"We are dealing with a dynamic situation. There's no set and forget here," Mr Turnbull said.

Eligible farmers will receive the first payment on September 1, with another round of funding to flow on March 1 next year.

Meanwhile, firefighters from Grafton, Coffs Harbour, Casino and the wider NSW north coast have been put through their paces in training and testing at a Forestry Corporation of NSW pre-season fire day in Bom Bom state forest near Grafton.

The corporation is bolstering its firefighting capabilities across the state in preparation for the coming fire season.

Grafton district manager Peter Walters said it was

important all firefighting staff understood the heightened risks presented by the coming hot and dry summer.

"This year is unseasonably dry, so we are getting in early to be as prepared as we can be for the season ahead," Mr Walters said.

"It's essential that land managers and community alike play their part for the fire season and plan ahead. The pre-season fire days are part of a rigorous training program, which includes training camps for new firefighters and those looking to advance their skills. This year's training also includes an expanded focus on protecting property during bushfire emergencies.

"We're working closely with the Rural Fire Service to upskill our staff on property protection this year," Mr Walters said.

**“FIREFIGHTERS  
AT THE READY  
AS BIG DRY  
CONTINUES**

**Beautiful. Natural.  
Sustainable. Australian.**  
[responsiblewood.org.au](http://responsiblewood.org.au)

You can be assured that wood carrying the Responsible Wood mark has come from certified Australian forests that are sustainably managed to the highest global standards.

**Responsible Wood**  
Enabling Sustainability

# High-end softwood supply shows strengthening of domestic market

DESPITE lower production capacity since the final quarter of 2017, Australia's softwood timber producers continue to supply and sell at the high end of the range.

Sales totalled a strong 279,224 cub m in May, up 16.3% on April, but 4.3% lower than in May 2017.

Underscoring the strength of domestic sales over a somewhat challenging production year, sales for the year ended May were 0.4% higher than for the prior corresponding period.

The chart below shows aggregate sales on a monthly and annual basis for the last five years. This clearly shows the ramp up in sales over the last four years; it also



**Challenges...** softwood sales have flattened out in the last two years as production is constrained by log resource limitations.

displays evidence that sales have flattened out in the last two years as production constrained by log resource limitations peaked.

There should be little doubt that this 'peaking' has contributed to the significant rise in imports of sawn softwood over the last year or more.

growth over the last year. The untreated structural grades have long been in decline, as they have been substituted for the treated equivalent. However, despite that competitive pressure, sales grew 2.3% over the last year, to reach 760,460 cub m. The larger sizes (greater than 120 mm) saw sales increase a very strong 38% to 70,069 cub m.

Over the same period, sales of the treated structural, greater than 120 mm, grade also grew –by 7.2% to 744,757 cub m. This grade remains close to becoming the largest distinct sales grade, but its growth has been slowed in recent times.

What the sawn softwood sales data demonstrates is that although sales are near peaking, producers are emphasising structural grades over other products. So too, as the import data shows, are the importers.

(Adapted from FWPA Statistics Count)

“CHALLENGING PRODUCTION YEARS PAST AND AHEAD

Structural grades have exhibited the strongest sales



## \$4 million research funding investment to boost sustainability, jobs and economic benefits in partnership with industry

With the support of the Australian and South Australian governments, the Mt Gambier hub of the National Institute for Forest Products Innovation has up to \$4 million available for research grants to grow the future of forestry. Research projects could include: developing new products in relation to composites, extractives and bioenergy; improving workplace innovation, safety and efficiency; enhancing tree growing including forest health and genetic gain; maximising precision management and applying new technologies; improving the forestry social licence; and identifying opportunities with robotics, automation and artificial intelligence. Individual research grants will range from \$50,000 - \$500,000 and will be for periods of up to three years in duration. Funding proposals close on Friday 7 September 2018 and should be lodged via email to [funding.sa@nifpi.org.au](mailto:funding.sa@nifpi.org.au). For further information, including a proposal template and briefing document, see [www.nifpi.org.au](http://www.nifpi.org.au)

**About us** The Mt Gambier hub of the National Institute for Forest Products Innovation is a joint venture between the Australian Government, the South Australian Government and the forest and wood products industry with the goal of growing forestry into the future.



Australian Government

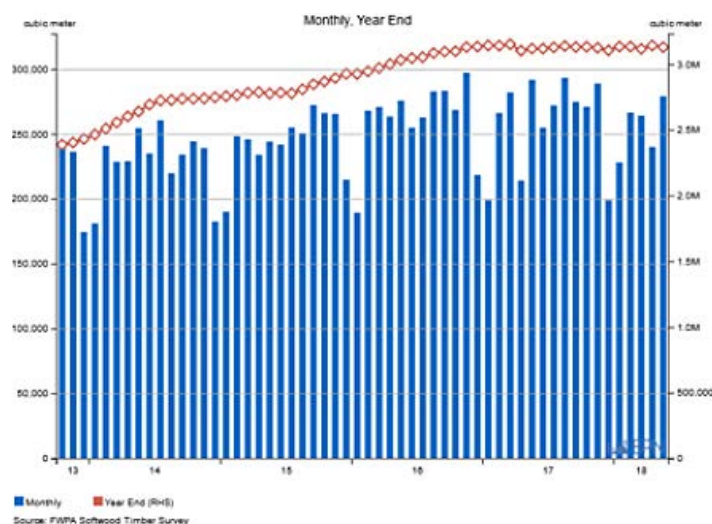


Government of South Australia



NATIONAL INSTITUTE FOR  
FOREST PRODUCTS INNOVATION  
MT GAMBIER

## SOFTWOOD TIMBER SURVEY - TOTAL VOLUME





## AUGUST

**8: FIEA Forest Industry Safety and Technology 2018**  
– Rotorua, NZ.

**15: FIEA Forest Industry Safety and Technology 2018**  
– Melbourne, Australia.

Covering updates and developments in forest industry safety, as well as providing a space for sharing ideas on how people, culture, technologies and systems are used to improve the safety of workers.

Visit [www.forestsafty.events](http://www.forestsafty.events)

## SEPTEMBER

**2-5: IFA and AFG Conference**  
– University House, Australian National University. Titled 'Forests for healthy cities, farms and people'. Title 'Forests for healthy cities, farms and people'. It will be preceded by AFG's pre-conference tour from Friday, August 31, to Sunday, September 2. Contact: (02) 6153 3044 or visit [www.forestry.org.au](http://www.forestry.org.au)

**11-12: FIEA WoodTech 2018**  
– Melbourne, Australia.

**18-19: FIEA Woodech 2018**  
– Rotorua, NZ.

Drymill scanning, wood machining, timber manufacturing. Visit [www.woodtech.events](http://www.woodtech.events)

## OCTOBER

**1-3: 2018 DANA NZ Forest-Wood Processing Conference & Optional Field Trip** – Wairakei Resort, Taupo. Theme: 'Does the NZ industry have to be world class to compete in the world?'

One-and-half day conference, followed by one-and-half field Trip with nine Central North Island industry and industry-related site visits. Pre-conference afternoon / dinner cruise on Lake Taupo. Contact Julie Bell [admin@dana.co.nz](mailto:admin@dana.co.nz) or visit [www.danaevents.co.nz/2018taupo/](http://www.danaevents.co.nz/2018taupo/)

**9-11: 2018 DANA Australian Forest-Wood Processing Conference & Optional Field Trip** – Hotel Grand

Chancellor, Launceston.

One-and-half day conference, one-and-half day field trip. Contact Julie Bell [admin@dana.co.nz](mailto:admin@dana.co.nz) or [www.danaevents.co.nz/2018tas/](http://www.danaevents.co.nz/2018tas/)

**13: Gala Queensland Timber Industry Awards evening** – Rydges South Bank, Brisbane. Hosted by TABMA Queensland, 6:30 - 11:30 pm. Dress formal. Contact Alicia Oelkers on (07) 07 3456 76065 or email [Alicia@tabma.com.au](mailto:Alicia@tabma.com.au)

**19: Victorian Association of Forest Industries annual dinner** – RACV Club, Melbourne. Tickets available from VAFI in July. Contact VAFI on (03) 9611 9000 or [info@vafi.org.au](mailto:info@vafi.org.au)

**19th Australian Timber Design Awards in Sydney.** Full details TBA. Entries open February 12 and close July 6. Judging period July 16-20. People's Choice voting July 23-August 17. Awards gala dinner mid-October. Visit [www.timberawards.com.au](http://www.timberawards.com.au)

**26: TABMA national industry dinner** – Hyatt Regency Hotel, Sydney. Contact (02) 9277 3100 or visit [www.tabma.com.au](http://www.tabma.com.au)

**26: Green Triangle Timber Industry Awards** – The Barn, Mount Gambier. Nominations close 17 August, Green Triangle Timber Industry Awards dinner 26 October. For further information contact Prue Younger, event manager +64 (21) 2765484.

For more information visit [www.gttia.com](http://www.gttia.com)

## NOVEMBER

**4-5: FIEA ForestTech 2018**  
– Rotorua, NZ.

**20-21: FIEA ForestTech 2018** – Melbourne, Australia. FIEA annual technology event for forest resource managers, remote sensing and GIS specialists and inventory foresters from throughout Australia and New Zealand. Visit [www.foresttech.events](http://www.foresttech.events)



**INAUGURAL AWARDS EVENT**  
across Victoria & South Australia  
[www.gttia.com](http://www.gttia.com)

*Do* you crosscut timber packs at  $\pm 1\text{mm}$  accuracy

*or* cut structural timber, panel products (MDF & LVL), paper rolls

*or* produce pallet dimensions or studs on fixed lengths

**HOLTEC** has a solution for you

For more information contact:

Ph: +64 9 416 8294  
Fax: +64 9 416 8296  
Email: [sales@holtec.org](mailto:sales@holtec.org)  
Web: [www.holtec.org](http://www.holtec.org)

**Our Scope of Supply:**

- Mobile and stationary chainsaws
- Timber crosscut stations
- Log cutting stations
- Circular saws

- Mechanisation
- Sorting lines
- Scanning and optimising systems
- Special systems

## SEPTEMBER

### 4-6: 8th World Congress on Biofuels and Bioenergy – Zurich, Switzerland.

For further information see: [www.biofuels-bioenergy.conferenceseries.com/Europe](http://www.biofuels-bioenergy.conferenceseries.com/Europe)

### 6-8: 15th Annual Global Buyers Mission – Whistler, BC, Canada BC.

Wood event to find new sources of high quality, competitively priced Canadian wood products, while reconnecting with current suppliers and socializing with peers. Contact: Brian Hawrysh CEO, BC Wood at [bhawrysh@bcwood.com](mailto:bhawrysh@bcwood.com) or call 1-604-882-7100. To register, request your access code from [gbm@bcwood.com](mailto:gbm@bcwood.com)

### 16-17: 8th China Global Wood Trade Conference and Tour – Chongqing, China.

FEA Canada and China Timber & Wood Products Distribution Association. This will be the fourth joint-conference that both groups have been collaborated. The 2018 event is expected to set record attendance levels. See: [www.woodmarkets.com/conference/conferences-china/2018-china-global-wood-trade-conference/](http://www.woodmarkets.com/conference/conferences-china/2018-china-global-wood-trade-conference/)

[china/2018-china-global-wood-trade-conference/](http://china/2018-china-global-wood-trade-conference/)

### 17-21: RISI Tenth International Woodfibre Trade Conference – Durban, South Africa.

See: [www.events.risiinfo.com/wood-fiber/](http://www.events.risiinfo.com/wood-fiber/)  
Email: [conferences@risi.com](mailto:conferences@risi.com), Tel: + 866.271.8525, + 32.2.536.0748

### 17-21: Managing Eucalyptus plantations under global changes – Le Corum, Montpellier, France IUFRO.

Improving resource use efficiency in eucalypt plantations. See: [www.iufro.org](http://www.iufro.org) and [www.cirad.fr](http://www.cirad.fr)

### 25-26: FSC Asia Pacific Business Forum 2018 – Mumbai, India.

Email: [info@au.fsc.org](mailto:info@au.fsc.org)

## OCTOBER

### 18-20: Timber Legality Research Symposium – University of Copenhagen, Copenhagen, Denmark.

To be held in association with the Forests & Livelihoods: Assessment, Research, and Engagement network. See: [www.globaltimbertrackingnetwork.org/event/timber-legality-research-symposium](http://www.globaltimbertrackingnetwork.org/event/timber-legality-research-symposium)

[www.globaltimbertrackingnetwork.org/event/timber-legality-research-symposium](http://www.globaltimbertrackingnetwork.org/event/timber-legality-research-symposium)  
Email: [cph@ifro.ku.dk](mailto:cph@ifro.ku.dk)

### 23-27: 4th International Congress on Planted Forests – Nanning, Guangxi, China.

Congress aims to investigate the contribution of planted forests to green development in the context of global changes. Topics will include the sustainability of planted forests in the context of changing climates and the future role of planted forests in bio-resources sustainability, environmental protection and green development.

See: [www.efiatlantic.efi.int/portal/events/](http://www.efiatlantic.efi.int/portal/events/)  
Email: [christophe.ozazio@efi.int](mailto:christophe.ozazio@efi.int)

## NOVEMBER

### 5-10: 54th Session of the International Tropical Timber Council and Sessions of the Associated Committees – Yokohama, Kanagawa, Japan.

ITTO Secretariat. See: [www.itto.int/workshop\\_detail](http://www.itto.int/workshop_detail)  
Email: [itto@itto.int](mailto:itto@itto.int)  
Tel: +81-45-223-1110

### 12-17: 2nd DANA 2-day Central America and Andes Forestry Sector

**Investment Conference – Cancun Mexico.** With 2-day optional pre-conference field trip to teak and eucalyptus plantations; a large modern MDF mill in Villahermosa region; and a 2-day optional post-conference tour to Mayan archaeological and recreational sites. For further information: [www.danaevents.co.nz/2018mexico/](http://www.danaevents.co.nz/2018mexico/)

### 12-18: XI International Workshop on Uneven-aged Silviculture: Challenges for increasing adaptability – Valdivia, Chile.

Uneven-aged silviculture is attracting increased interest due to its positive effects upon carbon sequestration, biodiversity, landscapes, and in its ability to provide a range of goods and services from managed forest ecosystems. Do uneven-aged forests have better options for adaptation to these future changes?

See: [www.uas.uach.cl/2018](http://www.uas.uach.cl/2018)  
Email: [pdonoso@uach.cl](mailto:pdonoso@uach.cl)

• Please send any events listings to John Halkett via email: [johnh@timberandforestryenews.com](mailto:johnh@timberandforestryenews.com)



# 8 wheels done right...

## Komatsu 931XC



# Chopper extraction big ecological gain for windfallen timbers in NZ

WHEN Cyclone Ita hit New Zealand in April 2014, it caused significant damage to some 40,000 ha of the conservation estate on the South Island's west coast.

Jon Dronfield, a forester and production manager for New Zealand Sustainable Forest Products, says it was a "once-in-a-generation event because of the sheer scale and geographical spread of the damage".

He adds that "the last decade has seen at least four separate, large-scale wind events in the West Coast region that resulted in notable amounts of windfall on conservation land. A notable event is defined as one that has the locals jumping up and down about utilisation and wasted resources."

Dronfield believes those resources provided by our 'natural forests' should be carefully managed and harvested – thus sustaining healthy and vibrant ecosystems while allowing for economic development and employment opportunities.

In response to the storm event and to balance the needs of the local community with those of the Conservation Act 1987 – which specifically prohibits the removal of timber or vegetation for gain or reward – the government of the day passed the West Coast Wind-blown Timber Act in July 2014.

The overarching aim of the act was to ensure "a large ecological gain could be achieved through the sensitive use of a small proportion of wind-blown timber" from conservation forests over a period of five years (it will



**Grapple harvest... only the log component was salvaged, with nutrients and minerals retained on site.**

## NEW ZEALAND DISPATCH



With **MICHAEL SMITH**

be repealed on July 1, 2019). The legislation allowed for the removal and sale of a generous amount of wind-blown timber and required that adverse environmental effects be kept to a minimum.

Dronfield says operational guidelines developed in the light of the legislation included ensuring some locations were not subject to harvest and leaving a significant quantity of big logs in harvested areas. Crucially, machinery was limited to existing formed roads to protect soil and hydrology, and to minimise loss of vegetation. That effectively meant it became

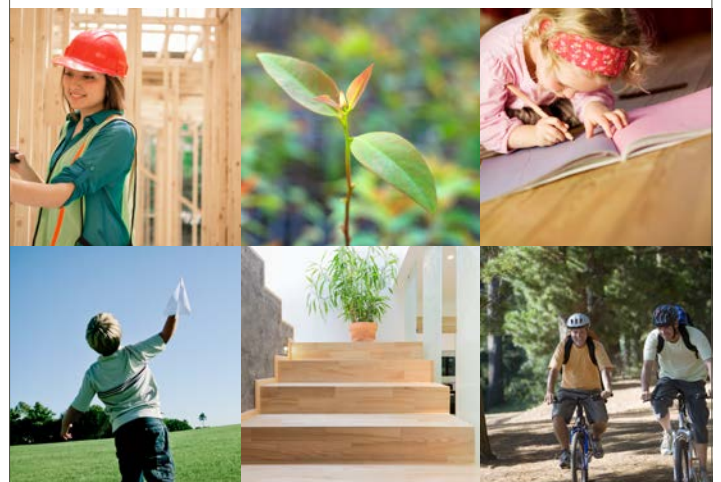
more economic to extract logs using helicopters, thus retaining all nutrients and minerals on site.

He says that existing roads and landing sites were used, and extraction was economic out to 2.5 km, targeting rimu logs up to 1450 kg. Although costs were high, "they worked because we're dealing with valuable and increasingly rare timber, which has average sawn timber prices many times higher than radiata".

Dronfield says 9239 cub m of rimu and beech has been recovered, returning more than \$1.6 million to the Department of Conservation for regional initiatives. Value-added processing and sales of timber associated with the project have generated revenue in excess

Cont P 10

## The united voice for Australia's forest industries



(02) 6285 3833  
enquiries@ausfpa.com.au  
www.ausfpa.com.au

AUSTRALIAN  
FOREST PRODUCTS  
ASSOCIATION  
**afpa**  
TREES | WOOD | PAPER

# Trans-Tasman publishing project gives vital guide to safety in forest workplace

EACH individual working in the forestry industry has the responsibility to ensure that they or their workers aren't exposed to health and safety risks.

It is crucial for the forestry industry to have relevant and up-to-date information on key work safety issues to prevent injury.

Pro-Visual Publishing in partnership with Australian Forest Growers, the Australian Forest Contractors Association, New Zealand Institute of Safety Management, Minter Ellison Rudd Watt Lawyers and the Forestry Industry Safety Council has released the first edition of the combined AU/

NZ Forestry Sector Guide to Workplace Safety.

This year's guide covers such topics as health and safety responsibility in forestry operations, personal protective equipment, fatigue management, work site meeting and the risk management process.

Pro-Visual Publishing and its partners have carefully selected safety topics most relevant to the forestry industry so workers and managers can be well



equipped and knowledgeable.

The exciting inclusion of Augmented Reality (AR) combines print and digital to create an engaging and dynamic experience for workers. By simply downloading the free Pro-Vis AR app, workers can scan over any AR capable content and access further information straight to their smart device.

John Hutchings, CEO, Pro-Visual Publishing has thanked the sponsors who he says made it possible for the guide to be distributed free of charge.

Pro-Visual Publishing is the leading specialist in wall-mounted workplace health and safety, food safety and hygiene, and wellbeing information resource guides. Each guide is practical and informative, providing a quick reference point for management and staff.

To obtain copies of the guide, call Pro-Visual on (02) 8272 2611 or email [marketing@provisual.com.au](mailto:marketing@provisual.com.au)

[www.provisual.com.au](http://www.provisual.com.au)

From P 9

of \$33 million.

"Most of the rimu goes to high-end furniture manufacturers, while it also supports flooring and detail mouldings for the renovation market," he said. "The red beech becomes shiplap and bevel-back weatherboards – substituting for imported cedar."

With log extraction now effectively over (given the deterioration in outer sapwood and the compounding effect on extraction costs), Dronfield says there is ample evidence of beech replacement and understorey/scrub regrowth... but it is too early to determine the viability of rimu regeneration.

"Because of our declining biodiversity and the



**Jon Dronfield... sustaining healthy and vibrant ecosystems.**

threats faced by our forest ecosystems, I believe limited-use models like this will be viewed positively – to sustain regional communities and fund conservation work," he said.

**On the cover: Heli-logging... a 'hue' (hotel uniform echo) delivers logs on the New Zealand West Coast.**



**Lonza**

Wood Protection

Providing solutions to enhance the performance of your Engineered Wood Products.

LVL, plywood and CLT are an essential component of the modern construction industry, Lonza offer a range of solutions to protect engineered wood products.

- ✓ Veneer pre-treatments
- ✓ Glue line additives
- ✓ Finished product protection

[www.lonzawoodprotection.com/apac/glue-line-engineered-wood-family/](http://www.lonzawoodprotection.com/apac/glue-line-engineered-wood-family/)

**Looking to enhance your engineered wood products? Contact Lonza.**

AUSTRALIA  
☎ +61 3 9339 8915  
✉ [tanalised.au@lonza.com](mailto:tanalised.au@lonza.com)

NEW ZEALAND  
☎ +64 9 276 3646  
✉ [tanalised.nz@lonza.com](mailto:tanalised.nz@lonza.com)

NEW PLYMOUTH  
☎ +64 6 755 9324  
✉ [scott.connor@lonza.com](mailto:scott.connor@lonza.com)

Tanalised is a registered trademark of Lonza in its subsidiaries. ©2017 Lonza





# GREEN TRIANGLE TIMBER INDUSTRY AWARDS



## NOMINATIONS OPEN

An opportunity exists for you to nominate an industry person or company that deserves to be recognised for their contribution to the forestry industry.

We are seeking suitable candidates that reflect all sectors and work within the Green Triangle region and with this inaugural event, let's make it the success it should be and provide the chance to celebrate the high achievers and players that hold credible status within the industry.

It is important to get involved this year as looking ahead, the opportunity to make it an annual event will be very real. The value proposition for nominees to be finalists and winners will generate industry opportunities and will grow the profile of the region to benefit businesses and industry.

Get involved, nominate today and step up.

Check out our website for nomination category criteria and details [www.gttia.com](http://www.gttia.com)

## Key Dates 2018

18 June  
17 August  
September  
26 October

Nominations Open  
Nominations Close  
Judging Process  
GREEN TRIANGLE  
TIMBER INDUSTRY AWARDS

## Sponsors 2018





# Solutions for safe, efficient and speedy truss and frame stacking

EXPANDING frame and truss manufacturing into mid-rise construction as city infill accelerates, and apartments continued to outnumber detached houses, presents a further growth opportunity for the frame and truss industry.

It is apparent that current and prospective activity in the industry will require an increased emphasis to be placed on quality manufacturing, and an even greater emphasis on high productivity, safely, repeatability and automated manufacturing systems.

It is clear that frame and truss manufacturing remains highly competitive, and well performing companies are paying even closer attention to automation, quality, precision and profitability. Such performance indicators rely of state-of-the-art innovation, technology and automation support.

Automation has clear benefits in terms of labour savings and optimisation of manufacturing systems leads to timber savings, increasing productive output and improving the bottom line.

In offering automated solutions to frame and truss manufacturers, Vekta Automation managing director Ed Serrano says the company has enjoyed a lengthy relationship with the Stakpro product line with a focus on safer and



**1/ High productivity... Stakpro product line ensures safer and more efficient truss and frame stacking.**

**1/ Stakpro... all three components have the ability to track and handle the finished product in a variety of modes ensuring minimal human effort on the stacking line.**

**2/ Award winning Vekta duo... Ed Serrano, managing director, and Shelena Serrano, operations manager.**

more efficient truss and frame stacking. Recently this product line has been expanded to include the Smart Conveyor roller line and Truss Transfer system.

"Working together all three components have the ability to track and handle the finished product in a variety of modes ensuring minimal human effort on the stacking line," says Mr Serrano.

"At Vekta, we know that work force health and safety is at the forefront of everyone's mind. With the Vekta Stakpro, the health and safety benefits are clear as is eliminating the risk of manual handling injuries, reduce staff fatigue and increased speed



and efficiency."

He says the Stakpro line is a cost-effective way to both reduce the risk of injury and improve the efficiency and productivity of frame and truss manufacturing plants.

"With Stakpro a single operator can safely lift any size truss or frame from the jig or conveyor line and transfer it to a stack, leaving

other operators free to continue working."

The Stakpro Truss is an ejection and stacking system and allows a single operator to safely lift any size truss from the jig or conveyor line and transfer it to a stack, while the Stakpro Frame can be fitted to the end of production lines and set up to handle various frame sizes.

Mr Serrano said Vekta also offered round-the-clock technical support from software developers and engineers.

"We focus on helping clients to get the highest performance from their factory and improving their commercial performance," he said.

**“ELIMINATING THE RISK OF INJURIES AND STAFF FATIGUE**





# RELAX

## STAKPRO BUILDS A FASTER, SAFER, AND MORE COST-EFFECTIVE WORKFORCE.

**With the Vekta Stakpro the benefits are clear; eliminate the risk of manual handling injuries, reduce staff fatigue and increase speed and efficiency.**

At Vekta, we know that health and safety is at the forefront of everyone's mind. The Stakpro line is a cost effective way to both reduce the risk of injury and to improve the efficiency and productivity of your plant.

The Stakpro is an ejection and stacking system and allows a single operator to safely lift any size truss or frame from the jig or conveyor line and transfer it to a stack. The Stakpro Truss is designed for pedestal jigs or roller conveyors and can be made for internal or external use, while the Stakpro Frame can be fitted to the end of your production line and can be set up to handle various frame sizes.



VEKTA   
  
**STAKPRO**

[vekta.com.au](http://vekta.com.au)





# Make It Wood website a good read about amazing wood design projects

## ENVIRONMENTAL

organisation Planet Ark has completed a major redesign of the Make It Wood website.

The site has a wealth of useful information on the environmental and health benefits that wood provides, and highlights some amazing exemplar wood projects.

In addition, in support of the major media campaign currently being undertaken by FWPA, there are a series of seven feature articles and an audio podcast, including two

**“ENCOURAGING THE INCREASED USE OF RELIABLE WOOD**



1/ **Peter Maddison... a great story to tell about wood.**

2/ **James Treble... sharing a passion for wood design.**

fabulous pieces written by Peter Maddison and James Treble.

Peter of Maddison Architects is a Melbourne-based architect and television presenter. He is best known for presenting the TV series

Grand Designs Australia, which has been shown in Australia, New Zealand and the UK.

James Treble is a Sydney-based interior designer, TV presenter, brand ambassador and writer, who loves sharing

his passion for houses, colour, good design and recycling.

Their stories and others are at [www.MakeItWood.org](http://www.MakeItWood.org)

Planet Ark's Make It Wood aims to encourage the increased use of responsibly-sourced wood as a building material. The program promotes wood as a low-carbon option for building. It sequesters carbon during the growth phase; it stores carbon for the long-term; it is renewable and it has a lower embodied energy than many other building materials such as concrete, steel or plastics.

Planet Ark works as a partnership with Forest and Wood Products Australia.



With the same quality and service you can trust, AKD is now in Queensland.

[www.akd.com.au](http://www.akd.com.au)





# Foreign forestry deal promises to support NZ billion trees plan

A BIG forest sale to an overseas investment fund was "likely" to advance the New Zealand's strategy to plant one billion trees over 10 years, according to the Overseas Investment Office.

Sydney-based investment manager New Forests has set up the fund, and San Francisco-based associate director, sustainability and communications, MaryKate Bullen expects a further multi-million dollar investment wave from another new fund.

New Forests has \$500 million set aside for investing in New Zealand forestry.

Managing director for Australia and New Zealand Mark Rogers said the money had been raised from mainly European investors.

New Forests intended to prune more of the trees, "increasing the likelihood that the wood will be supplied to domestic processors".

About half of New Zealand logs are exported and much of the balance goes to pulp and paper.

"While all our investments are managed by local firms, we work closely to help with operational efficiencies, and forest certification, which reflects our commitment to environmental and social values," MaryKate Bullen said.

The OIO gave the go-ahead to buy a 38% shareholding in Wenita Forest Products, and full ownership of Otago Land Company, which owns 22,000 ha of forest land managed by Wenita.

The price of the deal was secret, but an indication of its value was recently revealed when New Forests bought



**Jacinda Arden... leading affirmative government action plan for forestry.**



**MaryKate Bullen... continuing investment in New Zealand.**



**Mark Rogers... moneys raised from European investors.**

5000 ha in Marlborough for \$31 million.

New Forests has promised more protection for indigenous vegetation and wetlands, control against animal pests and wilding conifers, plus more public access.

The New Forests ANZFF2 fund now owns forestry land in New Zealand and Australia to a total value of about \$A700 million.

New Forests says there were more opportunities in New Zealand as the 600,000 ha of smaller estates planted in the 1990s approached maturity and smallholder owners chose to sell rather than manage the harvest.

"One risk factor is the rising political issue of foreign ownership of land," says New Forests.

The NZ investment follows strong housing markets, rising demand for hardwood chips and softwood logs in China, easing Australian and New Zealand currencies, and low shipping rates.

China takes nearly 40% of all forestry exports, overtaking Japan as the main market.

Builders were also using more cross-laminated timber,

for paper printing, but this had been offset by growth in packaging, tissues, fluff pulp, and new biochemical industries turning trees into liquid fuels, wood pellets, resins and plant-based fibres.

Australia and New Zealand have the second largest timberland investment market in the world after the US, which is mostly owned by investment funds.

(With extracts from Stuff, NZ)



Find out more about EWPA certification.

**The mark of safety, reliability and trust.**

PRODUCT CERTIFIED



Product Certification

Research & Development

Education & Training

Technical Promotion

Standards Development

Market Maintenance

(07) 3250 3700 [inbox@ewp.asn.au](mailto:inbox@ewp.asn.au)

[ewp.asn.au](http://ewp.asn.au)



# Responsible Wood goes LiVE at successful design event in Sydney

LEADING Australian woodwork magazine Australian Wood Review (AWR) presented its 2nd LiVE event at the Monkey Bar Theatre at Darling Harbour last Saturday.

Themed 'Tools for design – a journey into design with wood', the line-up enthralled the enthusiastic audience of students, teachers, amateurs and professional woodworkers.

The speakers (pictured), all contemporary luminaries in their field, included veteran designer/makers Roy Schack and Prof. Emeritus Helmut Lueckenhausen, younger designer/maker Laura McCusker, award-winning high school teacher Ben



2/ Sponsor... Simon Dorries, CEO of Responsible Wood (left), fields wood certification inquiries on the RW stand at the LiVE event in Sydney.

Percy and architect, Adam Markowitz. MC was AWR editor Linda Nathan.

Professor Lueckenhausen is a leading exponent in the field of studio furniture and has maintained a regular national and international

exhibition and lecture program, including forum, conference and workshop presentations.

His work has been exhibited in the US, Japan, Korea, Taiwan, Germany, Uruguay, Brazil, Chile, Iran,

the Philippines, Singapore, Thailand, Indonesia, Malaysia and Spain.

The LiVE event was sponsored by elite manufacturers Felder Group and 3m, Promac, distributors of Tormek tools and Responsible Wood.

Responsible Wood CEO Simon Dorries was encouraged by the many inquiries about certification and chain-of-custody systems from architects and wood designers who expressed "a profound desire to work creatively with sustainable wood products."

The afternoon was packed with insights on how to unleash one's creativity in woodwork.

## 7 REASONS WHY WOOD IS GOOD FOR HEALTH AND WELLBEING:

Studies show:\*

Reduced blood pressure

Lower heart rate

School children are less stressed

Increased social interaction in aged care

Workers can be more productive

Improved indoor air quality by moderating humidity

Feeling of warmth, comfort and relaxation

\* See Planet Ark report – Wood – Nature Inspired Design

**MakeItWood.org**



Project: International House Sydney  
Design: Tzannes Architects and Lendlease  
Photography: Ben Guthrie



# Radiata pine: the 'super wood' for the 21st century and beyond

WITH the Forestry Corporation of NSW now sponsoring this monthly column, let's talk about the corporation's 'bread-and-butter' commercial plantation species – radiata pine (*Pinus radiata*, family Pinaceae).

Pine plantations began to be established in Australia from the 1870s as insurance against diminishing supplies of timber from native forests. Early attempts to find suitable pine plantation species gave rise to planting trials using a wide variety of species. Pines from north and central America, Europe and the Mediterranean, from the Himalayas and Eastern Asia were all tried.

While several showed promise, the most successful was Monterey or radiata pine that grows naturally only in three small localities on the central Californian coast, in an area of about 5000 ha that stretches along the Pacific Coast in the Monterey region, south of San Francisco.

In its home state, Monterey pine is greatly overshadowed in importance by Douglas fir and ponderosa pine, not to mention the giant redwoods that grow in the locality. In California it had a reputation as a timber tree of limited utility, but was used by pioneering Spanish Franciscan friars to



**Versatile wood... mature radiata pine plantation and log storage at Sunny Corner state forest, an old gold mining region in the NSW central west.**

build their mission stations in the 1780s and was also used for paving-blocks and for house building in the early gold rush days.

Radiata pine, or just radiata, as it is now more commonly called, is one of the major plantation trees across temperate regions of the Southern Hemisphere, and the basis of substantial forest industries in several countries, including Australia, New Zealand, Chile and South Africa.

The precise year when radiata was brought to Australia is uncertain. It may have been that seed arrived in ships' ballast in colliers returning to Newcastle from California.

It has also been suggested that miners brought pine seed with them when they abandoned the Californian goldfields for the Australian gold rushes in the early 1850s.

## TALKING TREES



**With JOHN HALKETT**

Sponsored by  
**Forestry Corporation of NSW**

In any case, it is reasonably clear that radiata has been growing in Australia for about 150 years – although it took some time for the tree to attain recognition as a commercial tree.

Because it was poorly endowed with native trees suitable for timber production, South Australia was receptive to early field testing of pine

species, including radiata. Much of the credit for this initiative appears to have been due to the colony's surveyor-general G. W. Goyder. He later attributed the "lucky choice" of adding radiata pine, an unknown and untried newcomer, to the list of species for trials on advice he received from a Scottish nurseryman Edwin Smith.

The first substantial pine planting in South Australia took place in the 1870s.

Although there were many obstacles to surmount, radiata pine plantation efforts were unflagging. Substantial research on soil nutrient requirements, plantation management procedures and the sawing and utilisation of the timber have made radiata the mainstay of Australia's softwood timber and paper-making industries. It has adapted readily to the temperate climate of Australia's southern states and has growth rates commonly 10 to 20 times those of native eucalypt forest and up to 50 times that of slower-growing forests, such as cypress pine.

With its medium density, rapid growth rate and even texture, radiata has emerged as a 'super wood' of the 21st century.

Good for another century.



**The largest manager of commercial plantations and native forests in NSW**  
Visit us at [forestrycorporation.com.au](http://forestrycorporation.com.au)

# Examining 'conservation culture'

## Decline in Australia's understanding of forestry science

BUSH policy, the nature of conservation and the implications for the timber industry form the key themes of a new book on native forestry.

Mark Poynter, a forester for some 40 years, launched his book *Going 'Green': Forests, Fire and a Flawed Conservation Culture* in Melbourne recently.

A central theme of the book is the decline in the Australian public's understanding of forestry science, which evolved in 18th century Germany and spread around the world via its uptake in Britain.

Key issues discussed include:

- How environmental activism sprung up and evolved.
- The role of the media in fostering a certain view of native forestry.
- How politics and bureaucracy helped implement a 'green' agenda.
- Detailed discussion about 'saving' the Leadbeater's possum and how this affects the timber industry in Victoria's central highlands.
- The process surrounding the

reservation of Victoria's river red gum forests.

- The 'peace deal' that reserved large chunks of Tasmania's forests.
- Active management or benign neglect – the burning question for forest management and biodiversity.

Mr Poynter said the nationwide loss of community respect for forestry, foresters, forest industries and their workers was disturbing.

"Forestry has had its share of errors, trials and tribulations as it negotiated a way between society's pragmatic socio-economic demands and the needs of the forests themselves," he said.

Critics' concerns had been amplified by 'save-the-forest' environmental campaigning and mostly one-sided media reporting.

"Ultimately this has equated the broad science-based discipline of forestry with only one activity – wood



**Mark Poynter... there's little appreciation of socially useful wood products and the workers who produce them.**

production," Mr Poynter said.

He said foresters, who were scientists academically-trained in all aspects of forestry, were now considered to be "loggers" driven by greed and entangled in corruption, with wood production a 'red-neck' pursuit.

There was little appreciation of socially useful wood products and the workers who produced them, despite the general appreciation of the durability and beauty of native hardwood floors and furniture.

"Mostly missing from the public discourse has been the scientific justification for forest management and use," he said. "Forestry science

as practised by foresters is integral to the hows and whys of forest management," he said.

"But because it sits somewhere between the polarised protagonists – environmental activists and timber industries – it has rarely been afforded a voice."

Mr Poynter said there was a general belief that forests were being logged without any foresight and regulation simply because a few rural workers needed a job.

However, only 5-8% of Australia's native forest was used for timber production in a cycle of harvest and regrowth.

This fact raised serious questions about environmental ideology and how it had evolved into politically correct 'conservation culture'.

Mr Poynter, who is a forest practitioner, said his book aimed to examine this 'conservation culture' and how it was used to bring about political outcomes.

*Going 'Green': Forests, Fire and a Flawed Conservation Culture* is published by Connor Court.

**SERIOUS QUESTIONS ABOUT GREEN IDEOLOGY**

Timber & Forestry e-news is the most authoritative and quickest deliverer of news and special features to the forest and forest products industries in Australia, New Zealand and internationally. Enews is delivered weekly, every Thursday, 48 weeks of the year. Advertising rates are competitive with any industry magazine. Timber&Forestry e-news hits your target market – every week, every Thursday!

### HEAD OFFICE

Timber & Forestry e-news  
PO Box 69, Potts Point, NSW 1335,  
Australia  
Phone | +61 (0) 417 421 187

### PUBLISHERS

John Halkett | +61 (0) 417 421 187  
johnh@timberandforestryenews.com  
Dennis Neilson | +64 (0) 7 349 2764  
dennison@timberandforestryenews.com

### MANAGING EDITOR

Jim Bowden | +61 (0) 401 312 087

### ADVERTISING

John Halkett | +61 (0) 417 421 187  
johnh@timberandforestryenews.com  
Jim Bowden | +61 (0) 401 312 087  
cancon@bigpond.net.au

*The information contained in this publication has been obtained from sources assumed to be reliable. However, the publishers disclaim all warranties as to the accuracy, completeness, reliability or adequacy of the information displayed. Opinions expressed in Timber & Forestry e-news are not necessarily the opinions of the publisher or staff. We do not accept responsibility for any damage resulting from inaccuracies in editorial or advertising. The publishers are therefore indemnified against all actions, suits, claims or damages resulting from content in this e-news.*



# Lexus LC 500: this flagship coupe packs stunning style, performance

"HERE, go drive," said family friend Tony, a Gable-look-a-like, as he tossed me the keys to his Ford Zephyr Six during a Gold Coast holiday in 1959.

Oh, what a feeling... on that solo flight to Surfers.

A mark 2 six-cylinder Zephyr with three-speed column changer, two-tone blue and white paintwork, leather trim and white wall tyres – and a radio. I saw one for sale the other day in a motor classic magazine. Price \$21,000.

This model had a top speed of 128 km/hr with acceleration from 0-97 km in 20.2 secs.

The thrill of that ride, as a teenager, has been matched, more or less, by many brilliant cars over the years. But nothing prepared me for the 2018 Lexus coupe CL500, a rip-snorter with the ability to hit 100 km/hr in less than 4.7 secs – if you need to.

What do you reckon on the road? Try \$202,000. So you can appreciate why I drove below all speed limits. Very steady as she goes.

The LC500's structure is a mix of lightweight aluminium, carbon-fibre and high-strength steel – the most rigid body Lexus has ever produced.

With direct and port injection the coupe is powered by a 5L V8 that generates 471 horsepower and pairs with, wait for it... a 10-speed automatic transmission (in sport or sport-plus mode) sending power to the rear wheels.

There's electronic throttle control (with intelligence); all-alloy engine block and head construction; switchable fuel-efficient Atkinson and Otto cycle engine; 21 in. forged



*The Lexus LC 500 coupe... valid competitor in the luxury sports coupe segment*

alloy wheels and active dual exhaust system with chrome surround outlets.

Plenty of safety and security: 10-airbags; all-speed radar cruise control; auto hill and traffic hold; electronic auto park brake; blind spot monitor and rear cross traffic alert; front and rear parking sonar; pop-up pedestrian protection bonnet; and sway warning.

Sound: voice control phone, navigation and stereo; high-fi with CD (mp3 compatible); GPS with live traffic alert and speed zones; advanced Bluetooth connectivity with audio streaming.

There are many standout features – a low, long and wide hood; graceful lines that soar up and over a perfectly proportioned cabin; and a tapered midsection, aggressively-flared rear end; and flush door handles and infinity-mirror tail lights are



*Exceptional interior... leather and suede everywhere.*

## MOTORING



### With ORSON WHEELS

real eye-poppers.

Then there's the interior where the sums start to add up. Everything is exceptional – from the solid aluminium switchgear, to the featherweight magnesium paddle shifters, and the way the tachometer physically slides across the gauge cluster to reveal more on-screen menus. Leather and suede are everywhere

Impressive is a mechanical sound enhancer that pumps

engine noise into the cabin while the mufflers have a 'loud' mode that grabs attention.

As you park and get dazzled by the inside, on the outside the I-phones are snapping away from all angles. We waited until they wandered off before moving into contortionist mode to exit from the low racing driver front seats.

The LC is really a two-seater; cramped backseats will fit in the kids, but you won't get a set of golf clubs in the small boot.

Lexus, the luxury vehicle division of Japanese automaker Toyota, commissioned research firm AMCI Testing to compare the 2018 Lexus LC 500 to the 2017 Aston Martin DB11. The results – closed-course lap time just as fast; equal overall handling performance; and equal zigzag course and wet cornering performances.

There's a Lexus hybrid also that incorporates two electric motors and adds a conventional four-speed automatic transmission to the mix. Yes, it has two transmissions.

DELIVERED  
WEEKLY TO  
**14,500**  
GLOBAL  
READERS\*

## ADVERTISING RATES

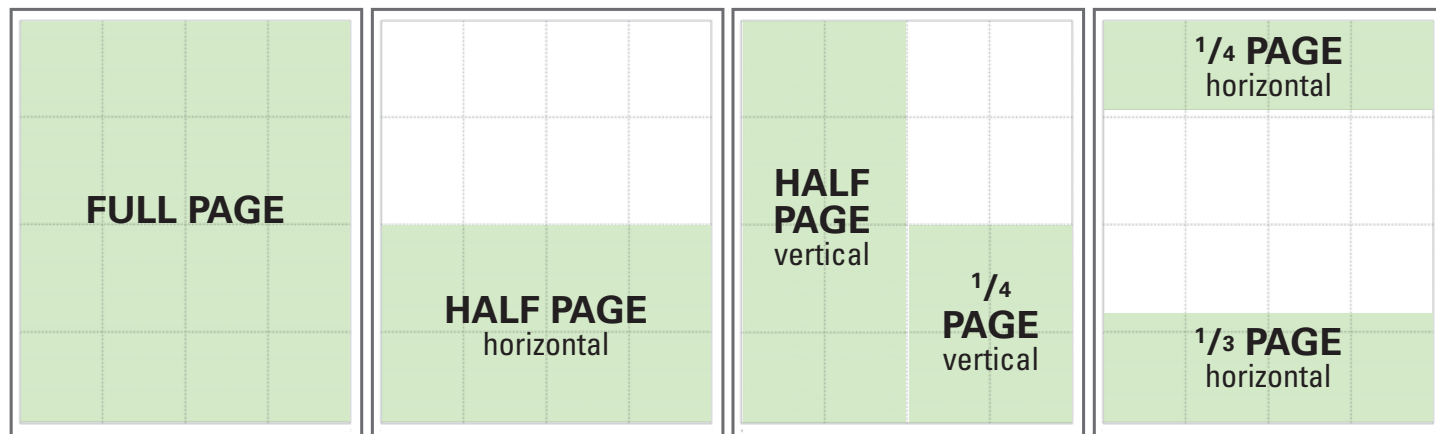
**timber**  
& FORESTRY *e*news

Now in its 11th year, Timber&Forestry enews has grown to be the Number 1 online weekly news journal for the forest and forest products industries – across Australia, New Zealand and internationally.

It is read by timber merchants, wholesalers, sawmillers, wood processors, foresters, contractors, CEOs and members of national and state organisations and associations, builders, specifiers, architects, state and federal government ministers, officials, and regional government.

\* Publishers' claim. The publication draws on a new data-base vault of more than 14,500 emails – a number that grows weekly.

## AD FORMATS



## DISPLAY AD RATES

### FULL PAGE: \$485

297mmH x 210mmW

### HALF PAGE: \$290

Vertical • 254mmH x 93mmW

Horizontal • 125mmH x 190mmW

### QUARTER PAGE: \$180

Vertical • 125mmH x 93mmW

Horizontal • 63mmH x 190mmW

### THIRD PAGE: \$215

Horizontal • 73mmH x 190mmW

### PAGE 1 Front cover strip: Contract booking

Horizontal • 30mmH x 190mmW

### PAGE 1 Front cover module: Contract booking

Horizontal • 45mmH x 49.5mmW

### PAGE 2 below story: Contract booking

Horizontal • 73mmH x 190mmW

### PAGE 3 Column strip: Contract booking

Vertical • 254mmH x 44.5mmW

### COMPANY PROFILE full page: \$485

## JOB SEEK AD RATES

### PER EMPLOYMENT AD: \$210

with FREE company logo

All prices quoted are per issue, exclude GST and are based on artwork being supplied.

## ARTWORK RATES

Contact: [zonya@creativebirddesign.com](mailto:zonya@creativebirddesign.com) for a quote

## TERM DISCOUNTS

12 WEEKS: 7.5% 24 WEEKS: 10%

48 WEEKS: 15%

Timber&Forestry enews is published by Timber & Forestry enews  
PO Box 69, Potts Point, NSW 1335, Australia. Phone: 0417 421 187.

Delivered every Thursday, 48 weeks of the year to industry decision makers in Australia, New Zealand, the Asia-Pacific, North America, UK and Europe.

Ad rates shown are based on a weekly booking. However, we have a minimum 4 week booking policy for display ads. Job seek ads can be placed on a weekly basis.

## DEADLINES

**Display ads:** Book by 10am Tuesday prior to publication

**Supply artwork:** Wednesday 12 noon prior to publication. jpg or pdf to our specifications with no crop marks or bleed.

**Job seek ad content:** Book and supply text copy by 4pm Wednesday prior to publication

## TERMS

New clients invoiced on booking. Existing clients 14 days.

## WHO TO CONTACT

**Media releases:** Jim Bowden e: [cancon@bigpond.net.au](mailto:cancon@bigpond.net.au) | **Ad bookings:** e: [advertising@timberandforestryenews.com](mailto:advertising@timberandforestryenews.com)

**Accounts:** e: [kylie@rbgprivate.com](mailto:kylie@rbgprivate.com) | **Free subscription:** [www.timberandforestryenews.com](http://www.timberandforestryenews.com)